

## Excellent Integrated System Limited

Stocking Distributor

Click to view price, real time Inventory, Delivery & Lifecycle Information:

[Lumex, Inc.](#)

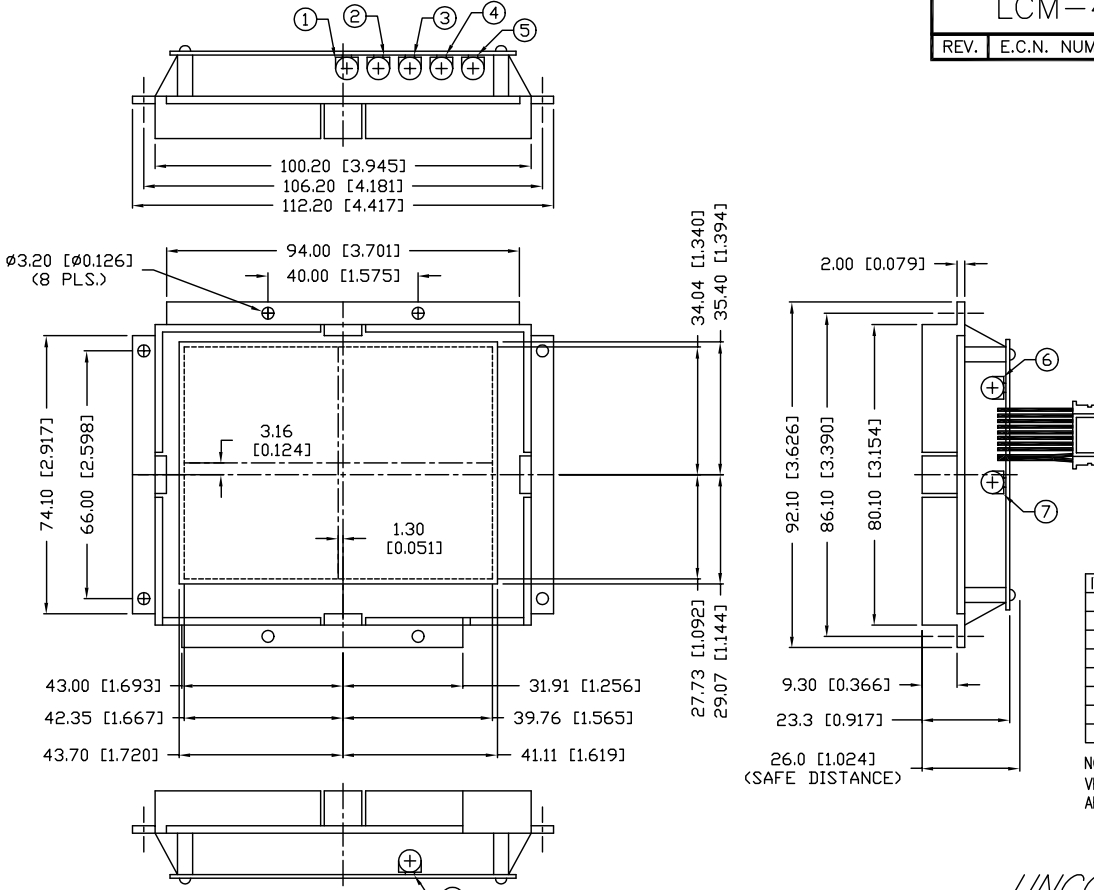
[LCM-480234GF-40CG](#)

For any questions, you can email us directly:

[sales@integrated-circuit.com](mailto:sales@integrated-circuit.com)

UNCONTROLLED DOCUMENT

PART NUMBER		REV.
LCM-480234GF-40CG		
REV.	E.C.N. NUMBER AND REVISION COMMENTS	DATE



ITEM	DESCRIPTION
1*	VR01 APC AUTO PHASE CONTROL FOR NTSC
2*	VR02 APC AUTO PHASE CONTROL FOR PAL
3*	VR03 B-R BIAS RED
4*	VR04 B-B BIAS BLUE
5	VR05 COLOR
6	VR06 BRIGHTNESS
7*	VR07 H-VIBRATION
8*	VR08 H-POSITION

NOTE: DO NOT TUNE  
 VR01/VR02/VR03/VR04/VR07/VR08. THOSE VR'S  
 ARE TUNED BY AUTHORIZED ENGINEER ONLY.

REPLACES PART #: LCM-480234GF-40FC

\*TOLERANCES PER DECIMAL PRECISION ARE: X=±1 (±0.039), X.X=±0.5 (±0.020), X.XX=±0.25 (±0.010). LEAD LENGTH=±0.75 (±0.030). MIN.=<sup>+0.00</sup><sub>-0.00</sub> DECIMAL PRECISION MAX.=<sup>+0.00</sup><sub>-0.00</sub> DECIMAL PRECISION

UNCONTROLLED DOCUMENT

REV.	PART NUMBER	CONFIDENTIAL INFORMATION			290 E. HELLEN ROAD PALATINE, ILLINOIS 60067 PHONE: (847) 359-2790 WEB: http://www.lumex.com
	LCM-480234GF-40CG	THE INFORMATION CONTAINED IN THIS DOCUMENT IS THE PROPERTY OF LUMEX INC. EXCEPT AS SPECIFICALLY AUTHORIZED IN WRITING BY LUMEX INC., THE HOLDER OF THIS DOCUMENT SHALL KEEP ALL INFORMATION CONTAINED HEREIN CONFIDENTIAL AND SHALL PROTECT SAME IN WHOLE OR IN PART FROM DISCLOSURE AND DISSEMINATION TO ALL THIRD PARTIES.			
4" COLOR TFT MODULE, 480 x 234 RESOLUTION, NTSC/PAL AUTO SWITCH.		RELIABILITY NOTE OUR MANY YEARS OF EXPERIENCE DATA ACCUMULATION INDICATE THAT SOLDER HEAT IS A MAJOR CAUSE OF EARLY AND FUTURE FAILURE. PLEASE PAY ATTENTION TO YOUR SOLDERING PROCESS.		DRAWN BY: SA/DU	CHECKED BY:
				APPROVED BY:	DATE: 3-7-00 PAGE: 1 OF 2 SCALE: N/A