

Excellent Integrated System Limited

Stocking Distributor

Click to view price, real time Inventory, Delivery & Lifecycle Information:

[Molex Connector Corporation](#)
[0011241044](#)

For any questions, you can email us directly:
sales@integrated-circuit.com

This document was generated on 04/06/2016

PLEASE CHECK WWW.MOLEX.COM FOR LATEST PART INFORMATION

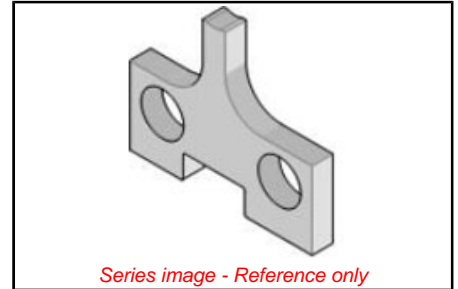
Part Number: [0011241044](#)
Status: **Active**
Description: Insulation Anvil

Documents:
[RoHS Certificate of Compliance \(PDF\)](#)

General	
Product Family	Application Tooling
Series	T9999
Comments	See Tooling Specification (PDF) Above
Function	Cutter
Geographic Area	Global
Level of Automation	Manual
More Detailed Tech Information	applicationtooling@molex.com
Product Name	N/A
Survey	www.molex.com/review/apptool_survey.html
Tool Type	Anvil
UPC	800753620605
Warranty Disclaimer	CAUTION: Molex tooling crimp specifications are valid only when used with Molex terminals and tooling manufactured by Molex and sold by Molex or authorized distributors ("Molex Tooling"). When using tooling other than Molex Tooling with Molex specific connector systems listed in our ATS documents, the Molex tooling qualification does not apply and the responsibility for full qualification of the connector system is that of the customer. Molex accepts no liability for connector performance or tooling support where tooling other than Molex Tooling is used or where Molex Tooling is modified.

Material Info
 Old Part Number 4996 8

Reference - Drawing Numbers
 Application Tooling Documents ATS-STANDARD-PARTS



EU ELV Not Reviewed	
EU RoHS Not Reviewed	China RoHS
REACH SVHC Not Reviewed	
Halogen-Free Status Not Reviewed	
Need more information on product environmental compliance?	
Email productcompliance@molex.com Please visit the Contact Us section for any non-product compliance questions.	
China ROHS	Not Reviewed
ELV	Not Reviewed

Search Parts in this Series T9999 Series
Use With 11-40-2004 , 11-40-2005 , 11-40-3004 , 11-40-3005 , 11-40-3107

This document was generated on 04/06/2016

PLEASE CHECK WWW.MOLEX.COM FOR LATEST PART INFORMATION