

Excellent Integrated System Limited

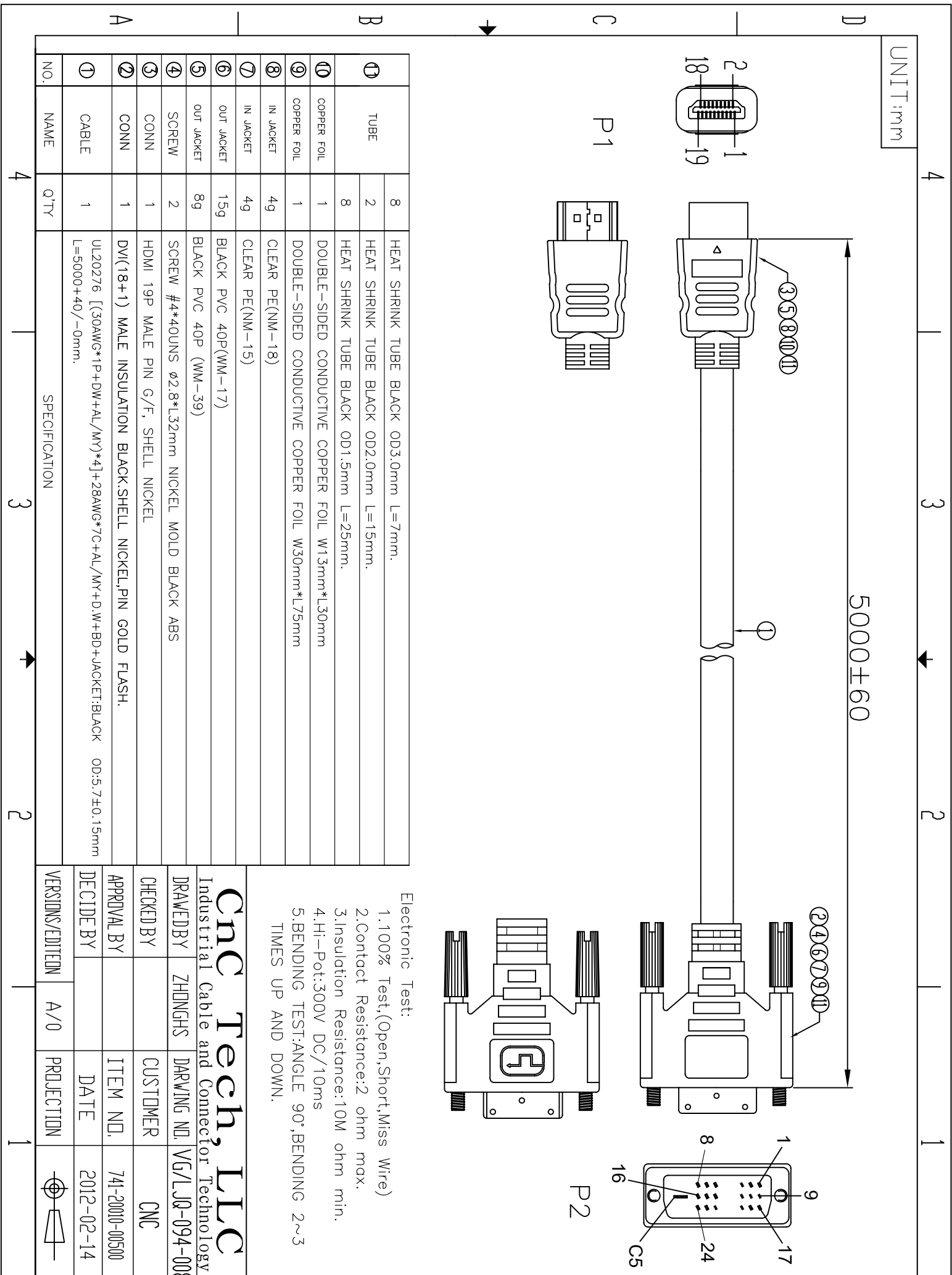
Stocking Distributor

Click to view price, real time Inventory, Delivery & Lifecycle Information:

[CNC Tech](#)
[741-20010-00500](#)

For any questions, you can email us directly:

sales@integrated-circuit.com



NO.	NAME	Q'TY	SPECIFICATION
①	TUBE	8	HEAT SHRINK TUBE BLACK OD3.0mm L=7mm.
		2	HEAT SHRINK TUBE BLACK OD2.0mm L=15mm.
		8	HEAT SHRINK TUBE BLACK OD1.5mm L=25mm.
⑩	COPPER FOIL	1	DOUBLE-SIDED CONDUCTIVE COPPER FOIL W15mm*L30mm
⑨	COPPER FOIL	1	DOUBLE-SIDED CONDUCTIVE COPPER FOIL W30mm*L75mm
⑧	IN JACKET	4g	CLEAR PE(NM-18)
⑦	IN JACKET	4g	CLEAR PE(NM-15)
⑥	OUT JACKET	15g	BLACK PVC 40P(WM-17)
⑤	OUT JACKET	8g	BLACK PVC 40P (WM-39)
④	SCREW	2	SCREW #4*40UNS ϕ 2.8*L32mm NICKEL MOLD BLACK ABS
③	CONN	1	HDMI 19P MALE PIN G/F, SHELL NICKEL
②	CONN	1	DVI(18+1) MALE INSULATION BLACK.SHELL NICKEL,PIN GOLD FLASH.
①	CABLE	1	UL20276 [(30AWG*1P+DW+AL/MY)*4]+28AWG*7G+AL/MY+D.W+BD+JACKET:BLACK OD:5.7±0.15mm L=5000+40/-0mm.

Electronic Test:
 1.100% Test,(Open,Short,Miss Wire)
 2.Contact Resistance:2 ohm max.
 3.Insulation Resistance:10M ohm min.
 4.Hi-Pot:300V DC/10ms
 5.BENDING TEST:ANGLE 90°,BENDING 2~3 TIMES UP AND DOWN.

CNC Tech, LLC

Industrial Cable and Connector Technology

DRAWN BY	ZHONGHS	DRAWING NO.	VG/LJQ-094-008
CHECKED BY		CUSTOMER	CNC
APPROVAL BY		ITEM NO.	741-20010-00500
DECIDE BY		DATE	2012-02-14
VERSIONS/EDITEN	A/0	PROJECTION	