

Excellent Integrated System Limited

Stocking Distributor

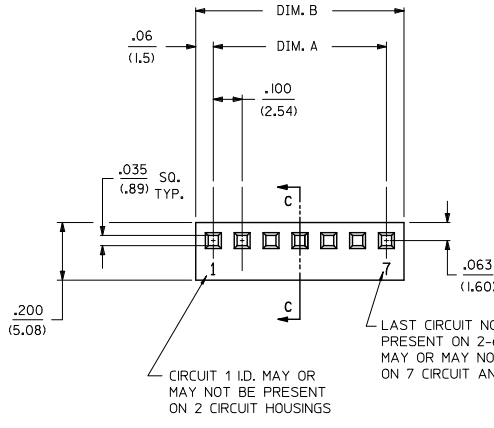
Click to view price, real time Inventory, Delivery & Lifecycle Information:

[Molex Connector Corporation](#)
[0010112124](#)

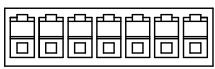
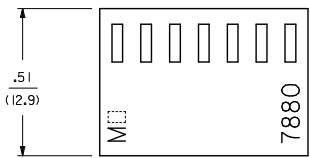
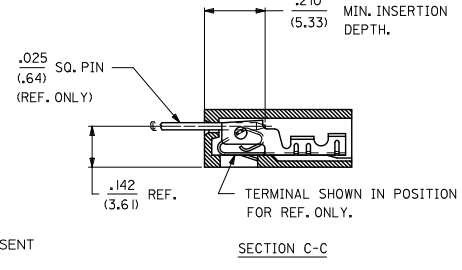
For any questions, you can email us directly:

sales@integrated-circuit.com

| NO. OF CKT'S. | DIM. A | DIM. B |
|---------------|---------------------------|---------------------------|
| 2 | .100±.004 (2.54±.10) | .222±.010 (5.64±.25) |
| 3 | .200±.004 (5.08±.10) | .322±.010 (8.18±.25) |
| 4 | .300±.004 (7.62±.10) | .422±.010 (10.72±.25) |
| 5 | .400±.004 (10.16±.10) | .522±.010 (13.26±.25) |
| 6 | .500±.005 (12.70±.13) | .622±.010 (15.80±.25) |
| 7 | .600±.005 (15.24±.13) | .722±.011 (18.34±.28) |
| 8 | .700±.005 (17.78±.13) | .822±.011 (20.88±.28) |
| 9 | .800±.006 (20.32±.15) | .922±.011 (23.42±.28) |
| 10 | .900±.006 (22.86±.15) | 1.022±.012 (25.96±.30) |
| 11 | 1.000±.006 (25.40±.15) | 1.122±.012 (28.50±.30) |
| 12 | 1.100±.006 (27.94±.15) | 1.222±.012 (31.04±.30) |
| 13 | 1.200±.007 (30.48±.18) | 1.322±.012 (33.58±.30) |
| 14 | 1.300±.007 (33.02±.18) | 1.422±.013 (36.12±.33) |
| 15 | 1.400±.011 (35.56±.28) | 1.522±.013 (38.66±.33) |
| 16 | 1.500±.011 (38.10±.28) | 1.622±.013 (41.20±.33) |
| 17 | 1.600±.011 (40.64±.28) | 1.722±.013 (43.74±.33) |
| 18 | 1.700±.011 (43.18±.28) | 1.822±.014 (46.28±.36) |



- NOTES:
1. MATERIAL: NYLON, UL94V-0, COLOR: WHITE
 2. FINISH: N/A
 3. PRODUCT SPECIFICATION: PS-7879
 4. PACKAGING SPECIFICATION: PK-7880-001
 5. INSERTION AND WITHDRAWAL FORCES RANGE FROM 1.3 - 1.9 LBS/ (5.8 - 8.5N) PER CIRCUIT.
 6. DIMENSIONS GIVEN ACROSS CENTERLINES ARE SYMMETRICAL ABOUT THOSE CENTERLINES WITHIN HALF THE TOTAL TOLERANCE.
 7. THIS HOUSING FOR USE WITH SHROUDED TERMINAL SERIES 7879.
 8. THIS PART CONFORMS TO CLASS B REQUIREMENTS OF COSMETIC SPECIFICATION PS-45499-002.
 9. SPECIAL SUPPORT MAY BE REQUIRED FOR PRINTED CIRCUIT BOARDS USED WITH 10 OR MORE CIRCUIT CONNECTORS.



7880 - N *

NO. OF CKTS.

| OPTION CODE | |
|-------------|-----------|
| OPT. CODE | RAMP |
| A | NONE |
| B | STD. RAMP |
| C | POL. RAMP |

| | | | | | | | | |
|----------------------------------------------------------------------------------------------------------------------|---------------------|-------------------------------------------------------------------------------------------------|-------------------------------------------|-------------------------------------------------------------|---------------------|--------------|----------------------|------------------------|
| ADD NOTE 4 EC NO: UCP2012-2712 DRAWING NO: 2017/02/20 CHKD: KIPER APPR: SMITH DATE: 2017/05/20 | QUALITY SYMBOLS | GENERAL TOLERANCES (UNLESS SPECIFIED) | | DIMENSION STYLE IN/MM | | SCALE 4:1 | DESIGN UNITS INCH | THIRD ANGLE PROJECTION |
| | | 4 PLACES ± --- ± --- 3 PLACES ± --- ± .010 2 PLACES ± 0.25 ± .014 1 PLACE ± 0.35 ± --- | DRAWN BY GUZIK DATE 1988/08/24 | TITLE .100/(2.54) KK HOUSING FOR SHROUDED CRIMP TERMINAL | | | | |
| | | ANGULAR ± 1/2° | CHECKED BY PATEL DATE 1988/08/24 | MOLEX INCORPORATED | | | | |
| | | DRAFT WHERE APPLICABLE MUST REMAIN WITHIN DIMENSIONS | MATERIAL NO. SEE CHART | DOCUMENT NO. SD-7880 | SHEET NO. 1 OF 2 | | | |

13 12 11 10 9 8 7 6 5 4 3 2 1

7880-NA-*

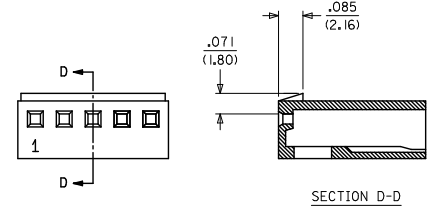
7880-NB-*

7880-NC-*

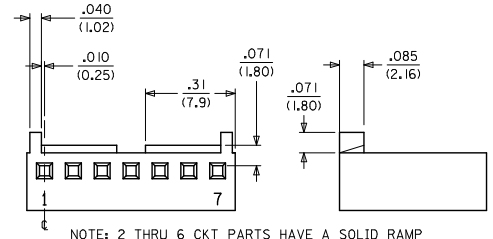
| PART NO. | ENG. NO |
|------------|----------|
| 10-01-2029 | 7880-2A |
| 10-01-2039 | 7880-3A |
| 10-01-2049 | 7880-4A |
| 10-01-2059 | 7880-5A |
| 10-01-2069 | 7880-6A |
| 10-01-2079 | 7880-7A |
| 10-01-2089 | 7880-8A |
| 10-01-2099 | 7880-9A |
| 10-01-2109 | 7880-10A |
| 10-01-2119 | 7880-11A |
| 10-01-2129 | 7880-12A |
| 10-01-2139 | 7880-13A |
| 10-01-2149 | 7880-14A |
| 10-01-2159 | 7880-15A |
| 10-01-2169 | 7880-16A |
| 10-01-2179 | 7880-17A |
| 10-01-2189 | 7880-18A |

| PART NO. | ENG. NO |
|------------|----------|
| 10-11-2023 | 7880-2B |
| 10-11-2033 | 7880-3B |
| 10-11-2043 | 7880-4B |
| 10-11-2053 | 7880-5B |
| 10-11-2063 | 7880-6B |
| 10-11-2073 | 7880-7B |
| 10-11-2083 | 7880-8B |
| 10-11-2093 | 7880-9B |
| 10-11-2103 | 7880-10B |
| 10-11-2113 | 7880-11B |
| 10-11-2123 | 7880-12B |
| 10-11-2133 | 7880-13B |
| 10-11-2143 | 7880-14B |
| 10-11-2153 | 7880-15B |
| 10-11-2163 | 7880-16B |
| 10-11-2173 | 7880-17B |
| 10-11-2183 | 7880-18B |

| PART NO. | ENG. NO |
|------------|----------|
| 10-11-2024 | 7880-2C |
| 10-11-2034 | 7880-3C |
| 10-11-2044 | 7880-4C |
| 10-11-2054 | 7880-5C |
| 10-11-2064 | 7880-6C |
| 10-11-2074 | 7880-7C |
| 10-11-2084 | 7880-8C |
| 10-11-2094 | 7880-9C |
| 10-11-2104 | 7880-10C |
| 10-11-2114 | 7880-11C |
| 10-11-2124 | 7880-12C |
| 10-11-2134 | 7880-13C |
| 10-11-2144 | 7880-14C |
| 10-11-2154 | 7880-15C |
| 10-11-2164 | 7880-16C |
| 10-11-2174 | 7880-17C |
| 10-11-2184 | 7880-18C |



7880-NB-
STD. RAMP OPTION



NOTE: 2 THRU 6 CKT PARTS HAVE A SOLID RAMP

7880-NC-
POLARIZING RAMP OPTION

| | | | | | | | | | |
|---------------------------------------------------------------------------------------------------------------------------------------|---------------------|------------------------------------------------------|------------|-------------------------------------------------------------------------------------------------------------------------------|--------------|--------------------|----------------------------------------------------|--|--|
| CORRECT POL. RIBS EC NO: UCP2012-2712 DRAWN BY: 2017/02/20 CHKD BY: 2017/02/21 APPROVED BY: 2017/05/20 N REV | QUALITY SYMBOLS | GENERAL TOLERANCES (UNLESS SPECIFIED) | | DIMENSION STYLE | SCALE | DESIGN UNITS | THIRD ANGLE PROJECTION | | |
| | | | mm | INCH | IN/MM | 4:1 | INCH | | |
| | | 4 PLACES | ± .010 | ± .004 | DRAWN BY | DATE | TITLE | | |
| | | 3 PLACES | ± .010 | ± .004 | GUZIK | 1988/08/24 | .100/(2.54) KK HOUSING FOR SHROUDED CRIMP TERMINAL | | |
| 2 PLACES | ± 0.25 | ± .014 | CHECKED BY | DATE | MATERIAL NO. | | | | |
| 1 PLACE | ± 0.35 | ± .014 | PATEL | 1988/08/24 | DOCUMENT NO. | | | | |
| ANGULAR ± 1/2° | | DRAFT WHERE APPLICABLE MUST REMAIN WITHIN DIMENSIONS | | APPROVED BY | DATE | MOLEX INCORPORATED | | | |
| | | | | SEE CHART | | SD-7880 | | | |
| | | | | THIS DRAWING CONTAINS INFORMATION THAT IS PROPRIETARY TO MOLEX INCORPORATED AND SHOULD NOT BE USED WITHOUT WRITTEN PERMISSION | | SHEET NO. 2 OF 2 | | | |

1b_frame_C_P_ME_T 12 11 10 9 8 7 6 5 4 3 2 1 Rev. F 2009/06/18