

Excellent Integrated System Limited

Stocking Distributor

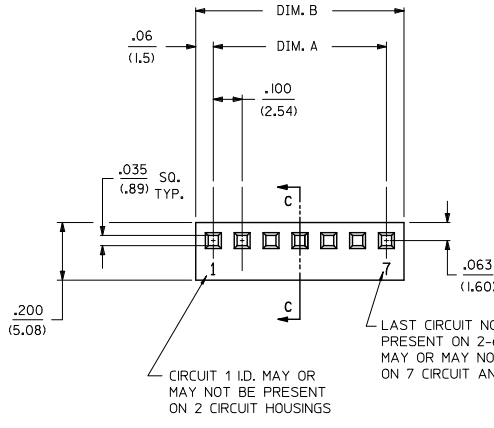
Click to view price, real time Inventory, Delivery & Lifecycle Information:

[Molex Connector Corporation](#)
[0010112183](#)

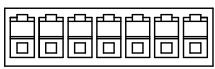
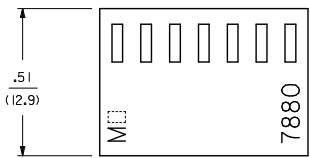
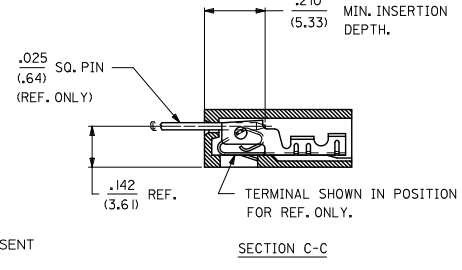
For any questions, you can email us directly:

sales@integrated-circuit.com

NO. OF CKT'S.	DIM. A	DIM. B
2	.100±.004 (2.54±.10)	.222±.010 (5.64±.25)
3	.200±.004 (5.08±.10)	.322±.010 (8.18±.25)
4	.300±.004 (7.62±.10)	.422±.010 (10.72±.25)
5	.400±.004 (10.16±.10)	.522±.010 (13.26±.25)
6	.500±.005 (12.70±.13)	.622±.010 (15.80±.25)
7	.600±.005 (15.24±.13)	.722±.011 (18.34±.28)
8	.700±.005 (17.78±.13)	.822±.011 (20.88±.28)
9	.800±.006 (20.32±.15)	.922±.011 (23.42±.28)
10	.900±.006 (22.86±.15)	1.022±.012 (25.96±.30)
11	1.000±.006 (25.40±.15)	1.122±.012 (28.50±.30)
12	1.100±.006 (27.94±.15)	1.222±.012 (31.04±.30)
13	1.200±.007 (30.48±.18)	1.322±.012 (33.58±.30)
14	1.300±.007 (33.02±.18)	1.422±.013 (36.12±.33)
15	1.400±.011 (35.56±.28)	1.522±.013 (38.66±.33)
16	1.500±.011 (38.10±.28)	1.622±.013 (41.20±.33)
17	1.600±.011 (40.64±.28)	1.722±.013 (43.74±.33)
18	1.700±.011 (43.18±.28)	1.822±.014 (46.28±.36)



- NOTES:
1. MATERIAL: NYLON, UL94V-0, COLOR: WHITE
 2. FINISH: N/A
 3. PRODUCT SPECIFICATION: PS-7879
 4. PACKAGING SPECIFICATION: PK-7880-001.
 5. INSERTION AND WITHDRAWAL FORCES RANGE FROM 1.3 - 1.9 LBS/ (5.8 - 8.5N) PER CIRCUIT.
 6. DIMENSIONS GIVEN ACROSS CENTERLINES ARE SYMMETRICAL ABOUT THOSE CENTERLINES WITHIN HALF THE TOTAL TOLERANCE.
 7. THIS HOUSING FOR USE WITH SHROUDED TERMINAL SERIES 7879.
 8. THIS PART CONFORMS TO CLASS B REQUIREMENTS OF COSMETIC SPECIFICATION PS-45499-002.
 9. SPECIAL SUPPORT MAY BE REQUIRED FOR PRINTED CIRCUIT BOARDS USED WITH 10 OR MORE CIRCUIT CONNECTORS.



7880 - N *

NO. OF CKTS.

OPTION CODE	
OPT. CODE	RAMP
A	NONE
B	STD. RAMP
C	POL. RAMP

ADD NOTE 4 EC NO: UCP2012-2712 DRAWING: ROH 2017/02/20 CHKD: KIPER 2017/02/21 APPR: SMITH 2017/05/20 DESCRIPTION REV	QUALITY SYMBOLS	GENERAL TOLERANCES (UNLESS SPECIFIED)	DIMENSION STYLE IN/MM	SCALE 4:1	DESIGN UNITS INCH	THIRD ANGLE PROJECTION																														
	$\nabla = 0$ $\nabla = 0.05$ $\nabla = 0.1$	<table border="1"> <tr><th colspan="2">mm</th><th colspan="2">INCH</th></tr> <tr><td>4 PLACES</td><td>± .010</td><td>± .004</td><td></td></tr> <tr><td>3 PLACES</td><td>± .015</td><td>± .006</td><td></td></tr> <tr><td>2 PLACES</td><td>± 0.25</td><td>± .014</td><td></td></tr> <tr><td>1 PLACE</td><td>± 0.35</td><td>± .014</td><td></td></tr> </table>	mm		INCH		4 PLACES	± .010	± .004		3 PLACES	± .015	± .006		2 PLACES	± 0.25	± .014		1 PLACE	± 0.35	± .014		<table border="1"> <tr><td>DRAWN BY</td><td>DATE</td></tr> <tr><td>GUZIK</td><td>1988/08/24</td></tr> <tr><td>CHECKED BY</td><td>DATE</td></tr> <tr><td>PATEL</td><td>1988/08/24</td></tr> <tr><td>APPROVED BY</td><td>DATE</td></tr> </table>	DRAWN BY	DATE	GUZIK	1988/08/24	CHECKED BY	DATE	PATEL	1988/08/24	APPROVED BY	DATE	TITLE	.100/(2.54) KK HOUSING FOR SHROUDED CRIMP TERMINAL	
	mm		INCH																																	
	4 PLACES	± .010	± .004																																	
3 PLACES	± .015	± .006																																		
2 PLACES	± 0.25	± .014																																		
1 PLACE	± 0.35	± .014																																		
DRAWN BY	DATE																																			
GUZIK	1988/08/24																																			
CHECKED BY	DATE																																			
PATEL	1988/08/24																																			
APPROVED BY	DATE																																			
DRAFT WHERE APPLICABLE MUST REMAIN WITHIN DIMENSIONS		MATERIAL NO. SEE CHART	DOCUMENT NO. SD-7880	MOLEX INCORPORATED																																

13 12 11 10 9 8 7 6 5 4 3 2 1

7880-NA-*

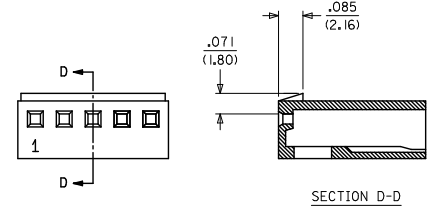
7880-NB-*

7880-NC-*

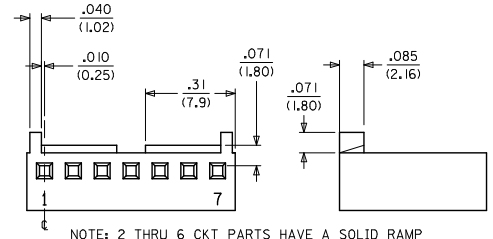
PART NO.	ENG. NO
IO-01-2029	7880-2A
IO-01-2039	7880-3A
IO-01-2049	7880-4A
IO-01-2059	7880-5A
IO-01-2069	7880-6A
IO-01-2079	7880-7A
IO-01-2089	7880-8A
IO-01-2099	7880-9A
IO-01-2109	7880-10A
IO-01-2119	7880-11A
IO-01-2129	7880-12A
IO-01-2139	7880-13A
IO-01-2149	7880-14A
IO-01-2159	7880-15A
IO-01-2169	7880-16A
IO-01-2179	7880-17A
IO-01-2189	7880-18A

PART NO.	ENG. NO
IO-11-2023	7880-2B
IO-11-2033	7880-3B
IO-11-2043	7880-4B
IO-11-2053	7880-5B
IO-11-2063	7880-6B
IO-11-2073	7880-7B
IO-11-2083	7880-8B
IO-11-2093	7880-9B
IO-11-2103	7880-10B
IO-11-2113	7880-11B
IO-11-2123	7880-12B
IO-11-2133	7880-13B
IO-11-2143	7880-14B
IO-11-2153	7880-15B
IO-11-2163	7880-16B
IO-11-2173	7880-17B
IO-11-2183	7880-18B

PART NO.	ENG. NO
IO-11-2024	7880-2C
IO-11-2034	7880-3C
IO-11-2044	7880-4C
IO-11-2054	7880-5C
IO-11-2064	7880-6C
IO-11-2074	7880-7C
IO-11-2084	7880-8C
IO-11-2094	7880-9C
IO-11-2104	7880-10C
IO-11-2114	7880-11C
IO-11-2124	7880-12C
IO-11-2134	7880-13C
IO-11-2144	7880-14C
IO-11-2154	7880-15C
IO-11-2164	7880-16C
IO-11-2174	7880-17C
IO-11-2184	7880-18C



7880-NB-
STD. RAMP OPTION



NOTE: 2 THRU 6 CKT PARTS HAVE A SOLID RAMP

7880-NC-
POLARIZING RAMP OPTION

CORRECT POL. RIBS EC NO: UCP2012-2712 DRAWN BY: 2017/02/20 CHKD BY: 2017/02/21 APPR: SM/TH 2017/05/20	QUALITY SYMBOLS 	GENERAL TOLERANCES (UNLESS SPECIFIED)		DIMENSION STYLE	SCALE	DESIGN UNITS	THIRD ANGLE PROJECTION	
			mm	INCH	IN/MM	4:1	INCH	
		4 PLACES	± .010	± .004	DRAWN BY	DATE	TITLE	
		3 PLACES	± .010	± .004	GUZIK	1988/08/24	.100/(2.54) KK HOUSING FOR SHROUDED CRIMP TERMINAL	
2 PLACES	± 0.25	± .014	CHECKED BY	DATE	MATERIAL NO.			
1 PLACE	± 0.35	± .014	PATEL	1988/08/24	DOCUMENT NO.			
ANGULAR ± 1/2°		DRAFT WHERE APPLICABLE MUST REMAIN WITHIN DIMENSIONS		APPROVED BY	DATE	Molex MOLEX INCORPORATED		
				SEE CHART		SD-7880		
				THIS DRAWING CONTAINS INFORMATION THAT IS PROPRIETARY TO MOLEX INCORPORATED AND SHOULD NOT BE USED WITHOUT WRITTEN PERMISSION		SHEET NO. 2 OF 2		

1b_frame_C.P_ME_T 12 11 10 9 8 7 6 5 4 3 2 1 Rev. F 2009/06/18