

Excellent Integrated System Limited

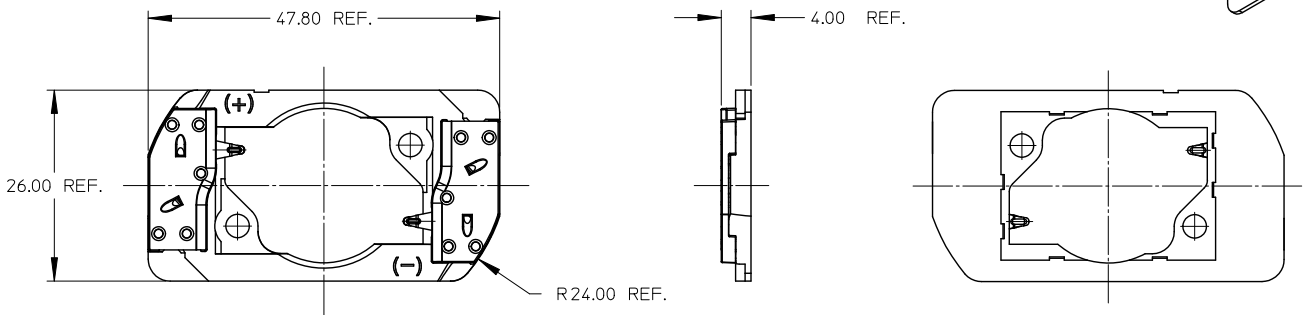
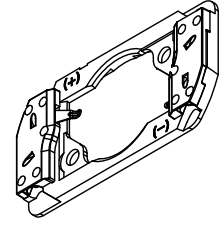
Stocking Distributor

Click to view price, real time Inventory, Delivery & Lifecycle Information:

[Molex Connector Corporation](#)
[1802600000](#)

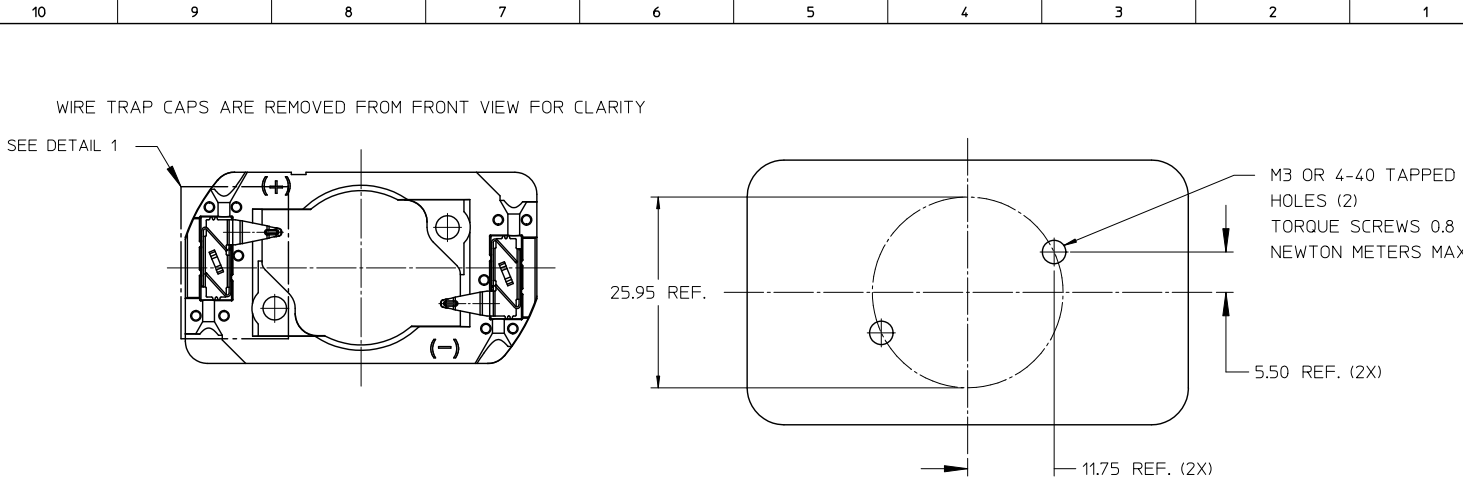
For any questions, you can email us directly:
sales@integrated-circuit.com

10	9	8	7	6	5	4	3	2	1
PART NUMBER		DESCRIPTION							
180260-0000		CITIZEN L-330 LED HOLDER							



- NOTES:
- MATERIALS:
 - CAPS: NATURAL COLOR PA66 NYLON 25% GF UL94V-0
 - HOUSING: NATURAL COLOR PA66 NYLON 25% GF UL94V-0
 - WIRE TRAP TERMINALS: COPPER ALLOY
 - FINISH: GOLD OVER NICKEL
 - THIS PRODUCT IS ELV AND ROHS COMPLIANT
 - APPLICABLE WIRE GAUGE - 18 OR 20 AWG
 - SOLID WIRE IS RECOMMENDED
 - IF STRANDED WIRE IS USED, PRE-TINNED IS RECOMMENDED
 - 1 cm STRIP LENGTH IS RECOMMENDED
 - MOUNT HOLDER USING M3 OR 4-40 SCREWS (2), 0.8 NEWTON METERS MAX TORQUE
 - FOR CITIZEN L-330 LED HOLDER OUTER MOUNT VERSION REFER TO SALES DRAWING SD-180260-002
 - UL RECOGNIZED TO UL496
 - UL RECOGNIZED TO CSA-C22.2 NO. 43 (2008)
 - RATED 600V
 - UL FILE NUMBER: E345583, UL-OLFB2

ENTER DESCRIPTION E.C. NO: SSL2012-0008 DRAWN BY: JAKLIC 2011/08/02 CHKD: APPRECIATION 2011/08/05 REV: B1	QUALITY SYMBOLS	GENERAL TOLERANCES (UNLESS SPECIFIED)	DIMENSION STYLE	SCALE	DESIGN UNITS	THIRD ANGLE PROJECTION																		
	$\nabla=0$ $\nabla=0$ $\nabla=0$	<table border="1"> <tr> <th></th> <th>mm</th> <th>INCH</th> </tr> <tr> <td>4 PLACES</td> <td>±---</td> <td>±---</td> </tr> <tr> <td>3 PLACES</td> <td>±---</td> <td>±---</td> </tr> <tr> <td>2 PLACES</td> <td>±0.13</td> <td>±---</td> </tr> <tr> <td>1 PLACE</td> <td>±0.25</td> <td>±---</td> </tr> <tr> <td colspan="3">ANGULAR ±1/2°</td> </tr> </table>		mm	INCH	4 PLACES	±---	±---	3 PLACES	±---	±---	2 PLACES	±0.13	±---	1 PLACE	±0.25	±---	ANGULAR ±1/2°			MM ONLY	2:1	METRIC	
		mm	INCH																					
	4 PLACES	±---	±---																					
3 PLACES	±---	±---																						
2 PLACES	±0.13	±---																						
1 PLACE	±0.25	±---																						
ANGULAR ±1/2°																								
	DRAWN BY: FJAKLIC 2011/04/12 CHECKED BY: DATE APPROVED BY: DMC GOWAN 2011/05/03 MATERIAL NO. 1802600000	TITLE: CITIZEN L-330 LED HOLDER MOLEX INCORPORATED DOCUMENT NO. SD-180260-001 SHEET NO. 1 OF 2																						
	DRAFT WHERE APPLICABLE MUST REMAIN WITHIN DIMENSIONS THIS DRAWING CONTAINS INFORMATION THAT IS PROPRIETARY TO MOLEX INCORPORATED AND SHOULD NOT BE USED WITHOUT WRITTEN PERMISSION																							



VIEW OF TWO-WAY WIRE TRAP
WIRE TRAPS WILL ACCOMODATE
EITHER 18 OR 20 GAUGE WIRE
DETAIL 1 SCALE 4:1

ENTER DESCRIPTION EC NO: SSL2012-0008 DRAWN BY: JAKLIC 2011/08/02 CHKD: APPREDCOMAN 2011/08/05 REV: B1	QUALITY SYMBOLS $\sqrt{\text{R}}=0$ $\sqrt{\text{R}}=0$ $\sqrt{\text{R}}=0$	GENERAL TOLERANCES (UNLESS SPECIFIED) <table border="1"> <thead> <tr> <th></th> <th>mm</th> <th>INCH</th> </tr> </thead> <tbody> <tr> <td>4 PLACES</td> <td>$\pm .13$</td> <td>$\pm .005$</td> </tr> <tr> <td>3 PLACES</td> <td>$\pm .13$</td> <td>$\pm .005$</td> </tr> <tr> <td>2 PLACES</td> <td>± 0.13</td> <td>$\pm .005$</td> </tr> <tr> <td>1 PLACE</td> <td>± 0.25</td> <td>$\pm .010$</td> </tr> </tbody> </table> ANGULAR $\pm 1/2^\circ$		mm	INCH	4 PLACES	$\pm .13$	$\pm .005$	3 PLACES	$\pm .13$	$\pm .005$	2 PLACES	± 0.13	$\pm .005$	1 PLACE	± 0.25	$\pm .010$	DIMENSION STYLE MM ONLY DRAWN BY: JAKLIC DATE: 2011/04/12 CHECKED BY: DATE:	SCALE: 2:1 DESIGN UNITS: METRIC THIRD ANGLE PROJECTION	TITLE: CITIZEN L-330 LED HOLDER APPROVED BY: DMC GOWAN DATE: 2011/05/03 MATERIAL NO: 1802600000 DOCUMENT NO: SD-180260-001 SHEET NO: 2 OF 2
		mm	INCH																	
	4 PLACES	$\pm .13$	$\pm .005$																	
	3 PLACES	$\pm .13$	$\pm .005$																	
2 PLACES	± 0.13	$\pm .005$																		
1 PLACE	± 0.25	$\pm .010$																		
DRAFT WHERE APPLICABLE MUST REMAIN WITHIN DIMENSIONS																				
THIS DRAWING CONTAINS INFORMATION THAT IS PROPRIETARY TO MOLEX INCORPORATED AND SHOULD NOT BE USED WITHOUT WRITTEN PERMISSION																				
SIZE B																				