

Excellent Integrated System Limited

Stocking Distributor

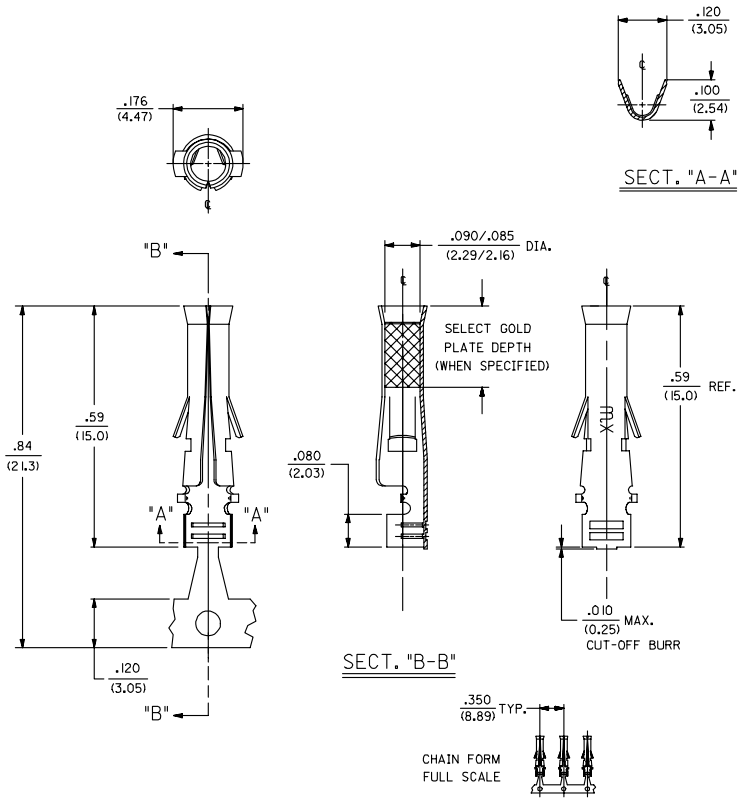
Click to view price, real time Inventory, Delivery & Lifecycle Information:

[Molex Connector Corporation](#)
[0002091651](#)

For any questions, you can email us directly:

sales@integrated-circuit.com

PART NO.	ENG. NO.
NOT TOOLED	42464-(P90)IL
02-09-1651	42464-(P90)I
NOT TOOLED	42464-(P550)IL
NOT TOOLED	42464-(P550)I
NOT TOOLED	42464-(P558)IL
NOT TOOLED	42464-(P558)I



LEGEND
 42464- (****)*
 P=PREPLATE BLANK=POSTPLATE
 FORM BLANK=CHAIN L=LOOSE
 FINISH CODE

- NOTES:**
- MATERIAL: CARTRIDGE BRASS, ALLOY #C26000 .008/(0.20) THICK.
 - FINISH CODES:
 901 HOT TIN DIP .000020/(0.00051) MIN.
 550 SELECT GOLD PLATE .000015/(0.00038) MIN. IN CONTACT AREA, OVER .000030/(0.00076) MIN. NICKEL OVERALL WITH .000010/(0.00025) MAX. GOLD FLASH OVERALL.
 558 SELECT GOLD PLATE .000030/(0.00076) MIN. IN CONTACT AREA, OVER .000050/(0.00127) MIN. NICKEL OVERALL WITH .000010/(0.00025) MAX. GOLD FLASH OVERALL.
 - PRODUCT SPECIFICATION: NONE
 - TERMINAL FOR USE WITH .093/(2.36) SERIES HOUSINGS AND WILL ACCEPT 16 THRU 20 AWG WIRE.
 - PULL OUT FORCE: 20 LBS. MIN. RETENTION IN HOUSING.

UPDATE NOTES ILC NO: UCP2006-2415 DRAWN BY: 7086/05/16 CHK'D BY: CHKDALHAG APPROV'D BY: 2086/05/22	DESCRIPTION A1	QUALITY SYMBOLS 	GENERAL TOLERANCES (UNLESS SPECIFIED)		DIMENSION STYLE	SCALE	DESIGN UNITS	THIRD ANGLE PROJECTION		
					IN/MM	6:1	INCH			
			4 PLACES ± .005 ± .005	3 PLACES ± .010 ± .010	2 PLACES ± 0.25 ± .014	1 PLACE ± 0.35 ± .014	ANGULAR ± 1/2°	DRAWN BY: DEP	DATE: 02/09/89	TITLE: .093/(2.36) DIA. SOCKET W/O INSULATION CRIMP FOR 16 THRU 20 AWG. WIRE
			DRAFT WHERE APPLICABLE MUST REMAIN WITHIN DIMENSIONS		MATERIAL NO.	DOCUMENT NO.	SHEET NO.	APPROVED BY: RAS	DATE: 02/09/89	MOLEX INCORPORATED