

Excellent Integrated System Limited

Stocking Distributor

Click to view price, real time Inventory, Delivery & Lifecycle Information:

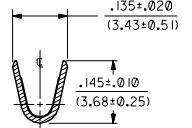
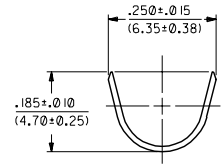
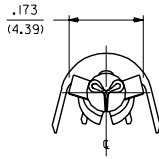
[Molex Connector Corporation](#)

[0002092171](#)

For any questions, you can email us directly:

sales@integrated-circuit.com

PART NO.	ENG. NO.	
02-09-2170	42138-(P90)I	
02-09-2171	42138-(P90)IL	
02-09-2172	42138-(IP90)I	OBsolete
02-09-2173	42138-(IP90)IL	
-	-	
-	-	



LEGEND

42138-*(****)*

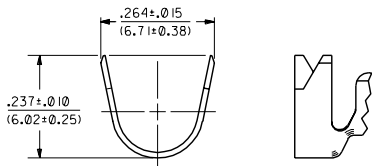
CRIMP STYLE: I="A", I="B"

FORM: BLANK=CHAIN, L=LOOSE

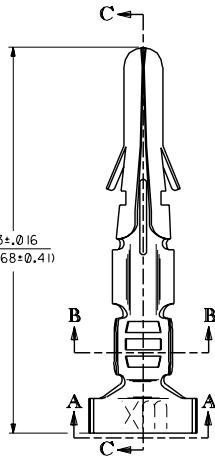
P=PREPLATE, BLANK=POSTPLATE

FINISH CODE

FINISHES, PER ES-88:
901 HOT TIN DIP .000020/(0.0005) MIN.



VIEW "A-A"
CRIMP STYLE "B"



SECTION "C-C"

MATERIAL:
CARTRIDGE BRASS, ALLOY #C26000,
.013/(0.33) THICK, SPRING TEMPER.

- NOTES:**
1. TERMINAL FOR USE WITH .093/(2.36) SERIES HOUSINGS AND WILL ACCEPT 14 THRU 18 AWG WIRE.
 2. INSULATION CRIMP STYLE "A" ACCEPTS A MAX. INSULATION DIA. OF .180/(4.57). INSULATION CRIMP STYLE "B" IS INTENDED FOR DOUBLE CRIMP OF TWO 18 AWG WIRES; ONE WITH A MAX. INSULATION DIA. OF .170/(4.32), THE OTHER A MAX. INSULATION DIA. OF .110/(2.79).



DIMENSIONS SHOWN IN METRIC INCH		MFG. SH. REV. LTR. REVISIONS	
UNLESS OTHERWISE SPECIFIED TOLERANCES ARE: ± 1/2°		REVISE ONLY ON CAD SYSTEM	
3 PLACE ± .010	---	TITLE: CRIMP TERMINAL, MALE	
2 PLACE ± .018	± 0.25	.093/(2.36) DIA.	
1 PLACE ---	± 0.35	14-18 AWG W/LARGE INSUL.	
DRAFT WHEN APPLICABLE MUST REMAIN WITHIN DIMENSIONS		MOLEX INCORPORATED	
DRG. NO. 02		PART NO. SD-42138-#	
APP'D. BY: RS		DATE: 2/21/92	
SCALE: 6:1		DRAWN BY: CP	

H	OBsolete P/N UCR2002-0210 COMERC 01/10/93
G1	REVISED ESW UCR1999-0518 STAMBAUGH 99-2-9
G	REVISE PER ECR U3 0597 CAC 4/1/93 RW
F	REVISE PER ECR U3 0159 CAC 2/9/93 RW
E	REVISE PER ECR U2 0674 CAC 4/28/92 RW
D	REVISE & REDRAW PER ECR U2 0081 CAC 2/21/92 RW

42138

A