

## Excellent Integrated System Limited

Stocking Distributor

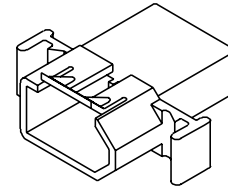
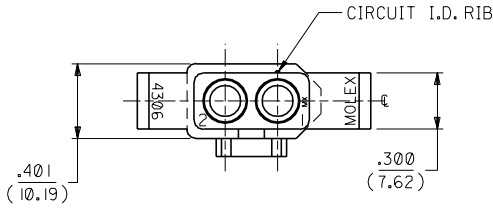
Click to view price, real time Inventory, Delivery & Lifecycle Information:

[Molex Connector Corporation](#)

[0003122022](#)

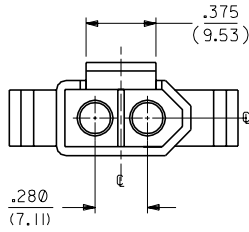
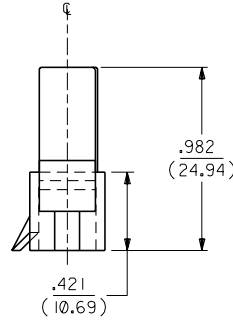
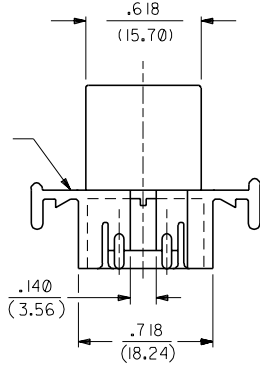
For any questions, you can email us directly:

[sales@integrated-circuit.com](mailto:sales@integrated-circuit.com)



4306-P PLUG HOUSING

MOUNTING EAR (2 PL.)  
SEE DETAIL 1 OR 2  
(WHEN SPECIFIED)

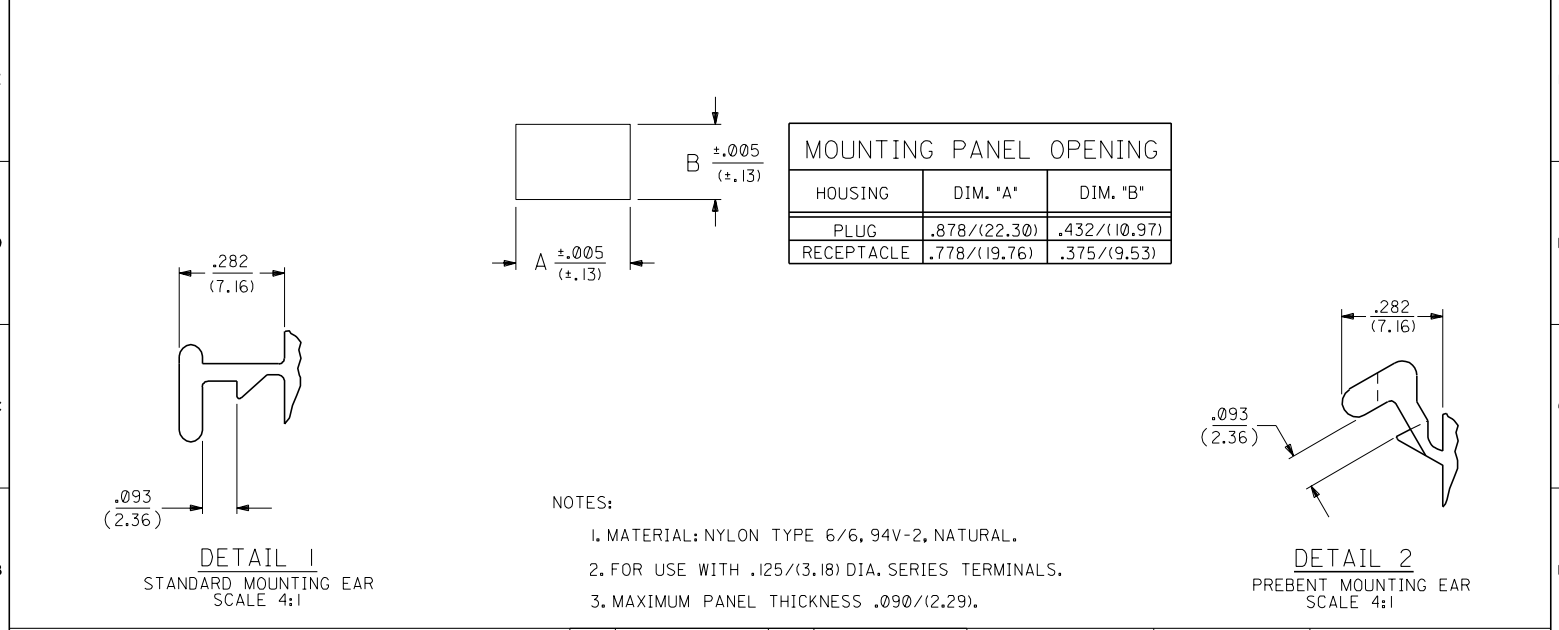


F	3	F	F	ADD CKT. I.D. RIB. PER ECR US 1770 CK 12/9/93	RW
F	2	F	E	REDRAWN PER ECR 10165	
F	1	F	GEP	6/5/87	RW
MFG.	SH.	REV.	LTR.	REVISIONS	

DIMENSIONS SHOWN IN METRIC/INCH		▽ = 0	▼ = 0	REVISE ONLY ON CAD SYSTEM
UNLESS OTHERWISE SPECIFIED TOLERANCES: ANGULAR ± 1/2°		TITLE		
3 PLACE ± .010 ---		HOUSING, 2 CIRCUIT PLUG AND RECEPTACLE .125/(3.18) DIA.		
2 PLACE ± .014 ± 0.25		MOLEX INCORPORATED SHEET NO. DATE LISLE, ILL. 68532 U.S.A. 1 of 3 6/5/87		
1 PLACE --- ± 0.36		PART NO. DRWG. NO. SEE CHART SD-4306-*		
DRAFT WHERE APPLICABLE MUST REMAIN WITHIN DIMENSIONS		THIS DRAWING CONTAINS INFORMATION THAT IS PROPRIETARY TO MOLEX INC. AND SHOULD NOT BE USED WITHOUT WRITTEN PERMISSION.		
DRWG. BY: GEP	CHK'D. BY: RW	FILE NAME: SD4306X1	DTN. CP	SIZE: B
APP'D. BY: RAS	SCALE: 2 : 1	DGN		

PLUG		
PART NO.	ENG. NO.	DESCRIPTION
03-12-2021	4306-P	PLUG WITH STANDARD EARS (DETAIL 1)
03-12-2022	4306-PI	PLUG W/O EARS
03-12-2023	4306-PB	PLUG W/PREBENT EARS (DETAIL 2)

RECEPTACLE		
PART NO.	ENG. NO.	DESCRIPTION
03-12-1021	4306-R	RECEPTACLE WITH STANDARD EARS (DETAIL 1)
03-12-1022	4306-RI	RECEPTACLE W/O EARS
03-12-1023	4306-RB	RECEPTACLE W/PREBENT EARS (DETAIL 2)



DIMENSIONS SHOWN (METRIC) INCH				UNLESS OTHERWISE SPECIFIED TOLERANCES: ANGULAR ± 1/2°		REVISIONS	
INCH		METRIC		REV.	DESCRIPTION	DATE	BY
3 PLACE	± .010	---	---				
2 PLACE	± .014	± 0.25					
1 PLACE	---	± 0.35					
DRAFT WHERE APPLICABLE MUST REMAIN WITHIN DIMENSIONS							
				F	SEE SHEET 1		
				E	SEE SHEET 1		
LTR. REVISIONS				LTR.	REVISIONS		

MOLEX INCORPORATED		SHEET NO. 3	DATE 6/5/87
LISLE, ILL. 60532 U.S.A.		DRWG. NO. SD-4306-*	
SEE CHART		THIS DRAWING CONTAINS INFORMATION THAT IS PROPRIETARY TO MOLEX INC. AND SHOULD NOT BE USED WITHOUT WRITTEN PERMISSION.	
FILE NAME SD4306X3 DGN	DIV. CP	SIZE B	