

Excellent Integrated System Limited

Stocking Distributor

Click to view price, real time Inventory, Delivery & Lifecycle Information:

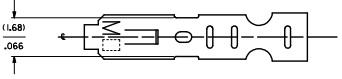
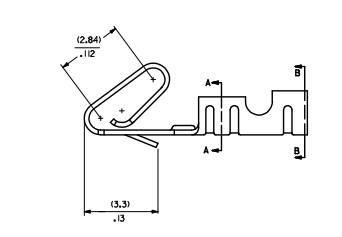
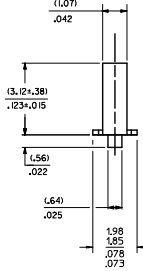
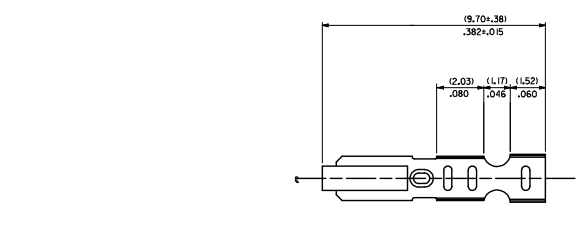
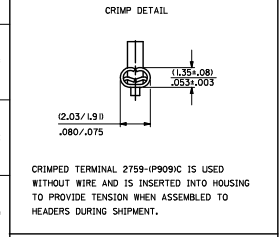
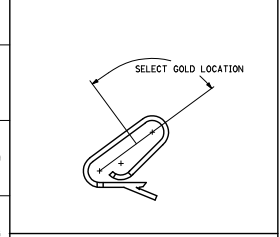
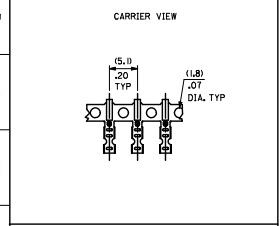
[Molex Connector Corporation](#)

[0008500159](#)

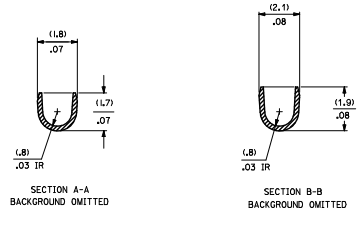
For any questions, you can email us directly:

sales@integrated-circuit.com

20 19 18 17 16 15 14 13 12 11 10 9 8 7 6 5 4 3 2 1



- NOTES:
- MATERIAL: (0.20)/.008 THICK BRASS
 - FINISH:
 - 122 - OVERALL TIN: (0.00381)/.000150 MIN. TIN OVER (0.00076)/.000030 MIN. NICKEL
 - 154 - OVERALL TIN: (0.00254)/.000100 MIN. TIN OVER (0.00127)/.000050 MIN. NICKEL
 - P909 - OVERALL HOT TIN OP: (0.00254)/.000100 MIN.
 - 550 - SELECT GOLD: (0.000381)/.000015 MIN.
 - OVERALL GOLD FLASH: (0.00005)/.000002 MIN.
 - OVERALL NICKEL UNDERPLATE: (0.00076)/.000030 MIN.
 - 555 - SELECT GOLD: (0.000381)/.000015 MIN.
 - OVERALL NICKEL UNDERPLATE: (0.00076)/.000030
 - 558 - SELECT GOLD: (0.00076)/.000030 MIN.
 - OVERALL GOLD FLASH: (0.00005)/.000002 MIN.
 - OVERALL NICKEL UNDERPLATE: (0.00127)/.000050 MIN.
 - PRODUCT SPEED: PS-10-07
 - PACKAGING SPECIFICATION: LOOSE TERMINALS: PER PK-2759-001 CHAIN FORM TERMINALS: PER PK-2759-002
 - CRIMP IS FOR 22-30 GA WIRE WITH (1.57)/.062 DIA INSULATION MAX.
 - INSERTION FORCE OF TERMINAL INTO (2.54)/.100 CENTERLINE CONNECTOR IS 2.5 LBS. MAX
 - TERMINAL RETENTION IN HOUSING IS 28.7N / 6LBS MIN. WHEN PULLED AT THE RATE OF (25.4MM) / 1 INCH PER MINUTE.
 - DIMENSIONS GIVEN ACROSS CENTERLINES ARE SYMMETRICAL ABOUT THOSE CENTERLINES WITHIN HALF THE TOTAL TOLERANCE.
 - THIS PART CONFORMS TO CLASS B REQUIREMENTS OF COSMETIC SPECIFICATION PS-45499-002.



2759-****
FORM
L=LOOSE
C=LOOSE CRIMPED
A=CHAIN, PER WINDING DETAIL 'A'
B=CHAIN, PER WINDING DETAIL 'B'
PLATING
SEE NOTE 2

QUALITY SYMBOLS	GENERAL TOLERANCES (UNLESS SPECIFIED)		DIMENSION STYLE		SCALE	DESIGN UNITS	THIRD ANGLE PROJECTION
	mm	INCH	MM/IN	DATE			
▽=0	4 PLACES	±.005	±.005	DRAWN BY	DATE	TITLE	CRIMP TERMINAL 22-30 GA WIRE
▽=0	3 PLACES	±.010	±.010	CHECKED BY	DATE		
▽=0	2 PLACES	±.025	±.014	APPROVED BY	DATE		
▽=0	1 PLACE	±.036	±.014	DATE	2012/03/20		
ANGULAR ±1/2°		MATERIAL NO.		DOCUMENT NO.		SHEET NO.	
DRAFT WHERE APPLICABLE MUST REMAIN WITHIN DIMENSIONS		SEE CHART		SD-2759		1 OF 2	
<small>THIS DRAWING CONTAINS INFORMATION THAT IS PROPRIETARY TO MOLEX INCORPORATED AND SHOULD NOT BE USED WITHOUT WRITTEN PERMISSION</small>							

19 18 17 16 15 14 13 12 11 10 9 8 7 6 5 4 3 2 1

