

## Excellent Integrated System Limited

Stocking Distributor

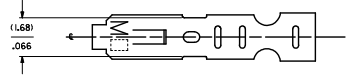
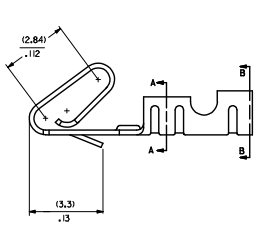
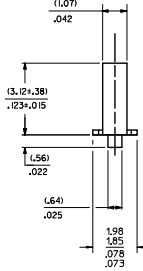
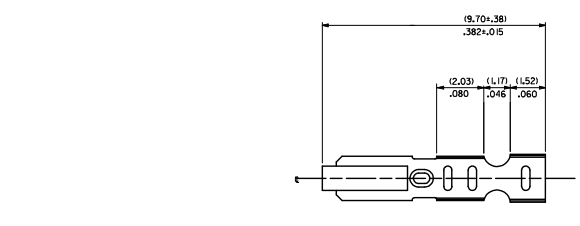
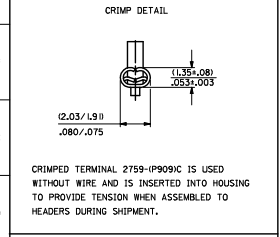
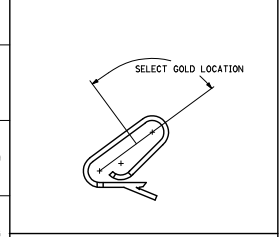
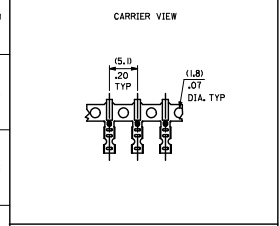
Click to view price, real time Inventory, Delivery & Lifecycle Information:

[Molex Connector Corporation](#)  
[0008500160](#)

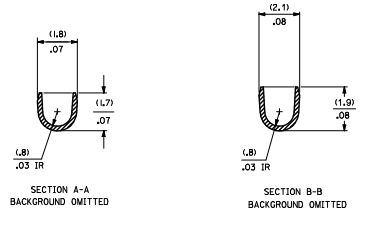
For any questions, you can email us directly:

[sales@integrated-circuit.com](mailto:sales@integrated-circuit.com)

20 19 18 17 16 15 14 13 12 11 10 9 8 7 6 5 4 3 2 1



- NOTES:  
1. MATERIAL: (0.20)/.008 THICK BRASS  
2. FINISH:  
122 - OVERALL TIN: (0.0038)/.000150 MIN. TIN OVER (0.00078)/.000030 MIN. NICKEL  
154 - OVERALL TIN: (0.00254)/.000100 MIN. TIN OVER (0.00127)/.000050 MIN. NICKEL  
P909 - OVERALL HOT TIN DPT: (0.00254)/.000100 MIN.  
550 - SELECT GOLD: (0.00038)/.000015 MIN.  
OVERALL GOLD FLASH: (0.00005)/.000002 MIN.  
OVERALL NICKEL UNDERPLATE: (0.00076)/.000030 MIN.  
555 - SELECT GOLD (0.00038)/.000015 MIN.  
OVERALL NICKEL UNDERPLATE: (0.00076)/.000030  
558 - SELECT GOLD: (0.00076)/.000030 MIN.  
OVERALL GOLD FLASH: (0.00005)/.000002 MIN.  
OVERALL NICKEL UNDERPLATE: (0.00127)/.000050 MIN.  
3. PRODUCT SPEED: PS-10-07  
4. PACKAGING SPECIFICATION: LOOSE TERMINALS: PER PK-2759-001 CHAIN FORM TERMINALS: PER PK-2759-002  
5. CRIMP IS FOR 22-30 GA WIRE WITH (1.57)/.062 DIA INSULATION MAX.  
6. INSERTION FORCE OF TERMINAL INTO (2.54)/.100 CENTERLINE CONNECTOR IS 2.5 LBS. MAX  
7. TERMINAL RETENTION IN HOUSING IS 28.7N / 6LBS MIN. WHEN PULLED AT THE RATE OF (25.4MM) / 1 INCH PER MINUTE.  
8. DIMENSIONS GIVEN ACROSS CENTERLINES ARE SYMMETRICAL ABOUT THOSE CENTERLINES WITHIN HALF THE TOTAL TOLERANCE.  
9. THIS PART CONFORMS TO CLASS B REQUIREMENTS OF COSMETIC SPECIFICATION PS-45499-002.



2759-\*\*\*\*  
FORM  
L=LOOSE  
C=LOOSE CRIMPED  
A=CHAIN, PER WINDING DETAL 'A'  
B=CHAIN, PER WINDING DETAL 'B'  
PLATING  
SEE NOTE 2

QUALITY SYMBOLS	GENERAL TOLERANCES (UNLESS SPECIFIED)		DIMENSION STYLE		SCALE	DESIGN UNITS	THIRD ANGLE PROJECTION
	mm	INCH	MM/IN	DATE			
▽=0	4 PLACES	± .005	± .010	DRAWN BY	DATE	TITLE	
▽=0	3 PLACES	± .010	± .010	SAMIEC	07/28/18	CRIMP TERMINAL	
▽=0	2 PLACES	± 0.25	± 0.14	CHECKED BY	DATE	22-30 GA WIRE	
▽=0	1 PLACE	± 0.36	± .010	PATEL	07/28/18		
▽=0	0 PLACE	± .010	± .010	APPROVED BY	DATE		
				FSMTH	2012/03/20		
				MATERIAL NO.		DOCUMENT NO.	
				ANGULAR ± 1/2°		SD-2759	SHEET NO.
				DRAFT WHERE APPLICABLE MUST REMAIN WITHIN DIMENSIONS			1 OF 2
				SEE CHART			
				SIZE D THIS DRAWING CONTAINS INFORMATION THAT IS PROPRIETARY TO MOLEX INCORPORATED AND SHOULD NOT BE USED WITHOUT WRITTEN PERMISSION			

