

Excellent Integrated System Limited

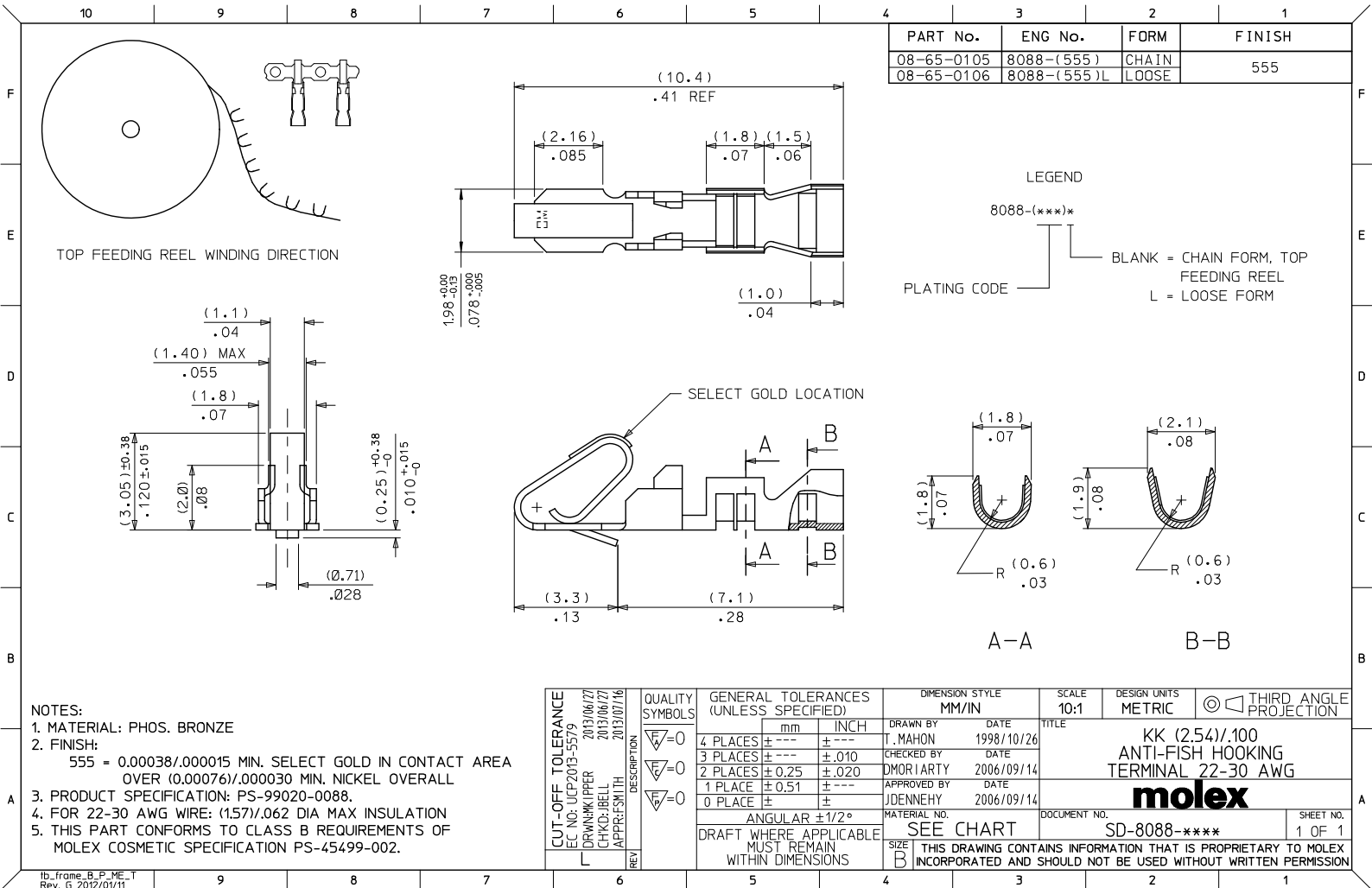
Stocking Distributor

Click to view price, real time Inventory, Delivery & Lifecycle Information:

[Molex Connector Corporation](#)
[0008520106](#)

For any questions, you can email us directly:

sales@integrated-circuit.com



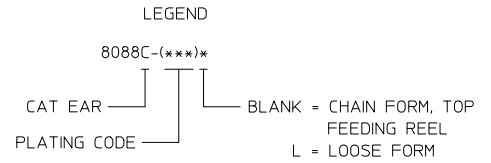
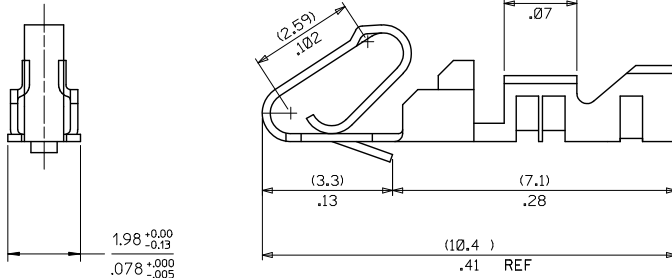
PART No.	ENG No.	FORM	FINISH
08-65-0105	8088-(555)	CHAIN	555
08-65-0106	8088-(555)L	LOOSE	

LEGEND
 8088-(***)*
 PLATING CODE ——— BLANK = CHAIN FORM, TOP FEEDING REEL
 L = LOOSE FORM

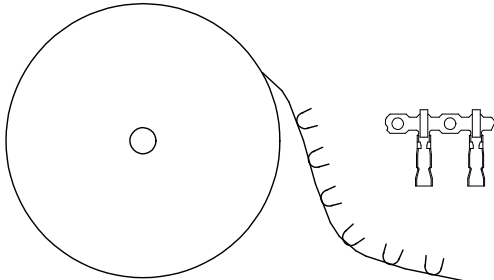
- NOTES:
 1. MATERIAL: PHOS. BRONZE
 2. FINISH:
 555 = 0.00038/0.00015 MIN. SELECT GOLD IN CONTACT AREA OVER (0.00076)/0.00030 MIN. NICKEL OVERALL
 3. PRODUCT SPECIFICATION: PS-99020-0088.
 4. FOR 22-30 AWG WIRE: (1.57)/.062 DIA MAX INSULATION
 5. THIS PART CONFORMS TO CLASS B REQUIREMENTS OF MOLEX COSMETIC SPECIFICATION PS-45499-002.

CUT-OFF TOLERANCE	EC NO: LCP2013-5579	DRAWN BY: PPER	2013/06/27	CHKD BY: BELL	2013/06/27	APPR: SMITH	2013/07/16	QUALITY SYMBOLS	GENERAL TOLERANCES (UNLESS SPECIFIED)		DIMENSION STYLE	SCALE	DESIGN UNITS	THIRD ANGLE PROJECTION
									mm	INCH				
4 PLACES	±	---	±	---				▽=0			MM/IN	10:1	METRIC	
3 PLACES	±	---	±	.010				▽=0			DATE			
2 PLACES	±	0.25	±	.020				▽=0			DATE			
1 PLACE	±	0.51	±	---							DATE			
0 PLACE	±	---	±	---							DATE			
									ANGULAR ±1/2°		MATERIAL NO.		DOCUMENT NO.	
DRAFT WHERE APPLICABLE MUST REMAIN WITHIN DIMENSIONS									SEE CHART		SD-8088-****		SHEET NO. 1 OF 1	

PART No.	ENG No.	FORM	FINISH SEE NOTE 2
08-52-0105	8088C-(P918)	CHAIN	(P918)
08-52-0106	8088C-(P918)L	LOOSE	(P918)



- NOTES:
- MATERIAL: PHOS. BRONZE ALLOY
 - FINISH:
(P918) = HOT TIN DIP (0.00102-0.00305)/.000040-.000120
 - PRODUCT SPECIFICATION: PS-99020-0088
 - SAME AS SD-8088-**** EXCEPT CAT EARS.
SEE SD-8088-**** FOR OTHER DIMENSIONS.
 - FOR 22-30 AWG WIRE, (1.57)/.062 MAX DIA INSULATION
 - THIS PART CONFORMS TO CLASS B REQUIREMENTS OF COSMETIC SPECIFICATION PS-45499-002.



TOP FEEDING REEL WINDING DIRECTION

CUT-OFF TOLERANCE EC NO: LCP2013-5579 DRAWN BY: PPR 2013/06/27 CHKD BY: BELL 2013/06/27 APPR: SMITH 2013/07/16	QUALITY SYMBOLS ▽=0 ▽=0 ▽=0	GENERAL TOLERANCES (UNLESS SPECIFIED)		DIMENSION STYLE MM ONLY		SCALE 10:1	DESIGN UNITS METRIC	THIRD ANGLE PROJECTION
		mm	INCH	DRAWN BY T. MAHON	DATE 1998/10/26	TITLE TERMINAL - ANTI FISH HOOKING KK .100 CTR REF WITH CAT EARS		
		4 PLACES	± .---	± .---	CHECKED BY D. MORIARTY	DATE 2006/09/14		
		3 PLACES	± .---	± .010	APPROVED BY JDENNEHY	DATE 2006/09/14		
		2 PLACES	± 0.25	± .020	MATERIAL NO. SEE CHART		DOCUMENT NO. SD-8088C-****	SHEET NO. 1 OF 1
		1 PLACE	± 0.51	± .---	THIS DRAWING CONTAINS INFORMATION THAT IS PROPRIETARY TO MOLEX, INCORPORATED AND SHOULD NOT BE USED WITHOUT WRITTEN PERMISSION			
		0 PLACE	±	±				