

Excellent Integrated System Limited

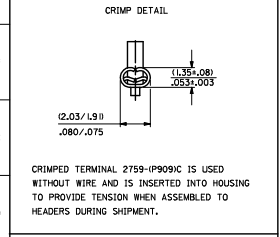
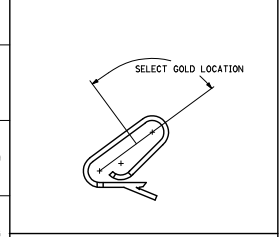
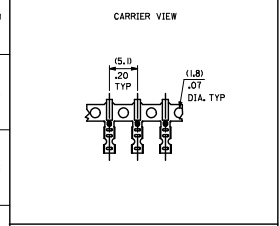
Stocking Distributor

Click to view price, real time Inventory, Delivery & Lifecycle Information:

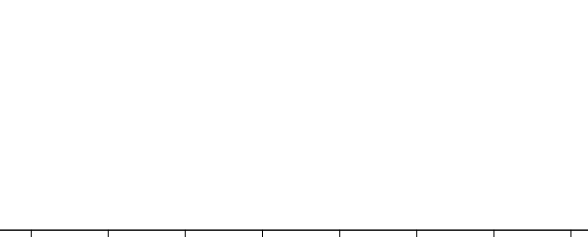
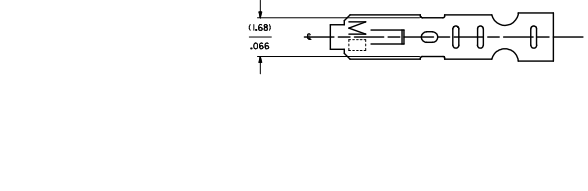
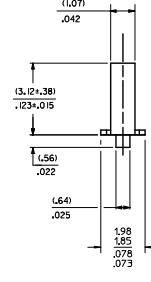
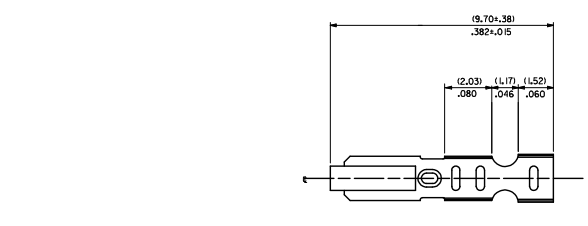
[Molex Connector Corporation](#)
[0008550130](#)

For any questions, you can email us directly:
sales@integrated-circuit.com

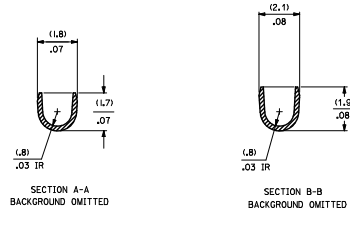
20 19 18 17 16 15 14 13 12 11 10 9 8 7 6 5 4 3 2 1



CRIMPED TERMINAL 2759-IP9091C IS USED WITHOUT WIRE AND IS INSERTED INTO HOUSING TO PROVIDE TENSION WHEN ASSEMBLED TO HEADERS DURING SHIPMENT.



- NOTES:
 1. MATERIAL: (0.20)/.008 THICK BRASS
 2. FINISH:
 T22 - OVERALL TIN: (0.0038)/.000150 MIN. TIN OVER (0.00078)/.000030 MIN. NICKEL
 #54 - OVERALL TIN: (0.00254)/.000100 MIN. TIN OVER (0.00127)/.000050 MIN. NICKEL
 P909 - OVERALL HOT TIN OP: (0.00254)/.000100 MIN. NICKEL
 #50 - SELECT GOLD: (0.00038)/.000015 MIN. OVERALL GOLD FLASH: (0.00005)/.000002 MIN. OVERALL NICKEL UNDERPLATE: (0.00076)/.000030 MIN.
 #55 - SELECT GOLD: (0.00038)/.000015 MIN. OVERALL NICKEL UNDERPLATE: (0.00076)/.000030 MIN.
 #58 - SELECT GOLD: (0.00076)/.000030 MIN. OVERALL GOLD FLASH: (0.00005)/.000002 MIN. OVERALL NICKEL UNDERPLATE: (0.00127)/.000050 MIN.
 3. PRODUCT SPEED: PS-10-07
 4. PACKAGING SPECIFICATION: LOOSE TERMINALS: PER PK-2759-001 CHAIN FORM TERMINALS: PER PK-2759-002
 5. CRIMP IS FOR 22-30 GA WIRE WITH (1.57)/.062 DIA INSULATION MAX.
 6. INSERTION FORCE OF TERMINAL INTO (2.54)/.100 CENTERLINE CONNECTOR IS 2.5 LBS. MAX
 7. TERMINAL RETENTION IN HOUSING IS 28.7N / 6LBS MIN. WHEN PULLED AT THE RATE OF (25.4MM) / 1 INCH PER MINUTE.
 8. DIMENSIONS GIVEN ACROSS CENTERLINES ARE SYMMETRICAL ABOUT THOSE CENTERLINES WITHIN HALF THE TOTAL TOLERANCE.
 9. THIS PART CONFORMS TO CLASS B REQUIREMENTS OF COSMETIC SPECIFICATION PS-45499-002.



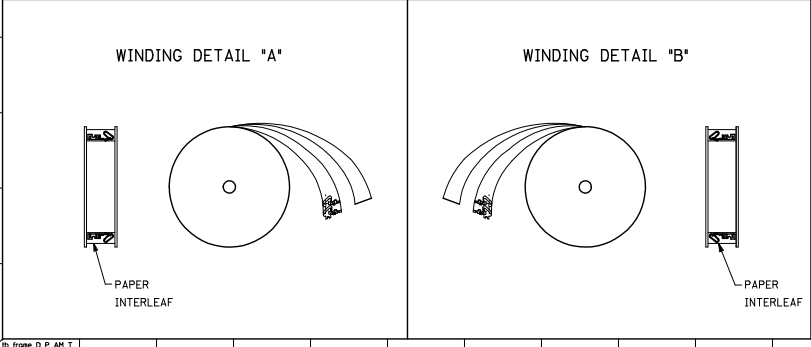
2759-****
 FORM
 L=LOOSE
 C=LOOSE CRIMPED
 A=CHAIN, PER WINDING DETAIL 'A'
 B=CHAIN, PER WINDING DETAIL 'B'
 PLATING
 SEE NOTE 2

QUALITY SYMBOLS	GENERAL TOLERANCES (UNLESS SPECIFIED)		DIMENSION STYLE		SCALE	DESIGN UNITS	THIRD ANGLE PROJECTION
	mm	INCH	MM/IN	DATE			
▽=0	4 PLACES	±.005	±.005	DRAWN BY	DATE	TITLE	CRIMP TERMINAL 22-30 GA WIRE
▽=0	3 PLACES	±.010	±.010	CHECKED BY	DATE		
▽=0	2 PLACES	±.025	±.014	APPROVED BY	DATE		
▽=0	1 PLACE	±.036	±.014	DATE	2012/03/20		
		ANGULAR ±1/2°		MATERIAL NO.		DOCUMENT NO.	SHEET NO.
		DRAFT WHERE APPLICABLE MUST REMAIN WITHIN DIMENSIONS		SEE CHART		SD-2759	1 OF 2
				THIS DRAWING CONTAINS INFORMATION THAT IS PROPRIETARY TO MOLEX INCORPORATED AND SHOULD NOT BE USED WITHOUT WRITTEN PERMISSION			

19 18 17 16 15 14 13 12 11 10 9 8 7 6 5 4 3 2 1

20 19 18 17 16 15 14 13 12 11 10 9 8 7 6 5 4 3 2 1

2759-(***)*		
PART NO.	ENG. NO.	
08-55-0101	2759-(555)B	
08-55-0102	2759-(555)L	
08-55-0126	2759-(555)A	
08-56-0109	2759-(550)B	
08-56-0110	2759-(550)L	
08-50-0113	2759-(P909)B	
08-50-0114	2759-(P909)L	
08-50-0124	2759-(P909)C	
08-51-0108	2759-(122)B	
	2759-(122)L	
08-50-0274	2759-(P909)B	
08-50-0273	2759-(P909)A	
08-55-0130	2759-(558)B	
08-55-0131	2759-(558)L	
08-50-0160	2759-(154)L	
08-50-0159	2759-(154)B	



SEE SHEET 1 REC. NO. WFD704-431 DRAWN BY: ZHANG W CHECKED BY: ZHANG W APPR. BY: ZHANG W AWZ	QUALITY SYMBOLS	GENERAL TOLERANCES (UNLESS SPECIFIED)	DIMENSION STYLE		SCALE	DESIGN UNITS	THIRD ANGLE PROJECTION
	$\nabla=0$	mm INCH	MM/IN	DATE	1:1	INCH	③
	$\nabla=0$	4 PLACES ±--- ±---	DRAWN BY SAMIEC	07/28/87	TITLE	CRIMP TERMINAL 22-30 GA WIRE	
	$\nabla=0$	3 PLACES ±--- ±.010	CHECKED BY PATEL	07/28/87	DOCUMENT NO.	molex	
$\nabla=0$	2 PLACES ±0.25 ±.014	APPROVED BY FSMITH	2012/03/20	SHEET NO.	SD-2759		
	1 PLACE ±0.36 ±---			2 OF 2			
	0 PLACE ±--- ±---			THIS DRAWING CONTAINS INFORMATION THAT IS PROPRIETARY TO MOLEX INCORPORATED AND SHOULD NOT BE USED WITHOUT WRITTEN PERMISSION			

19 18 17 16 15 14 13 12 11 10 9 8 7 6 5 4 3 2 1