



Distributor of Molex Connector Corporation: Excellent Integrated System Limited

Datasheet of 0008580104 - CONN TERM CRIMP 18-24 AWG GOLD

Contact us: [sales@integrated-circuit.com](mailto:sales@integrated-circuit.com) Website: [www.integrated-circuit.com](http://www.integrated-circuit.com)

---

## Excellent Integrated System Limited

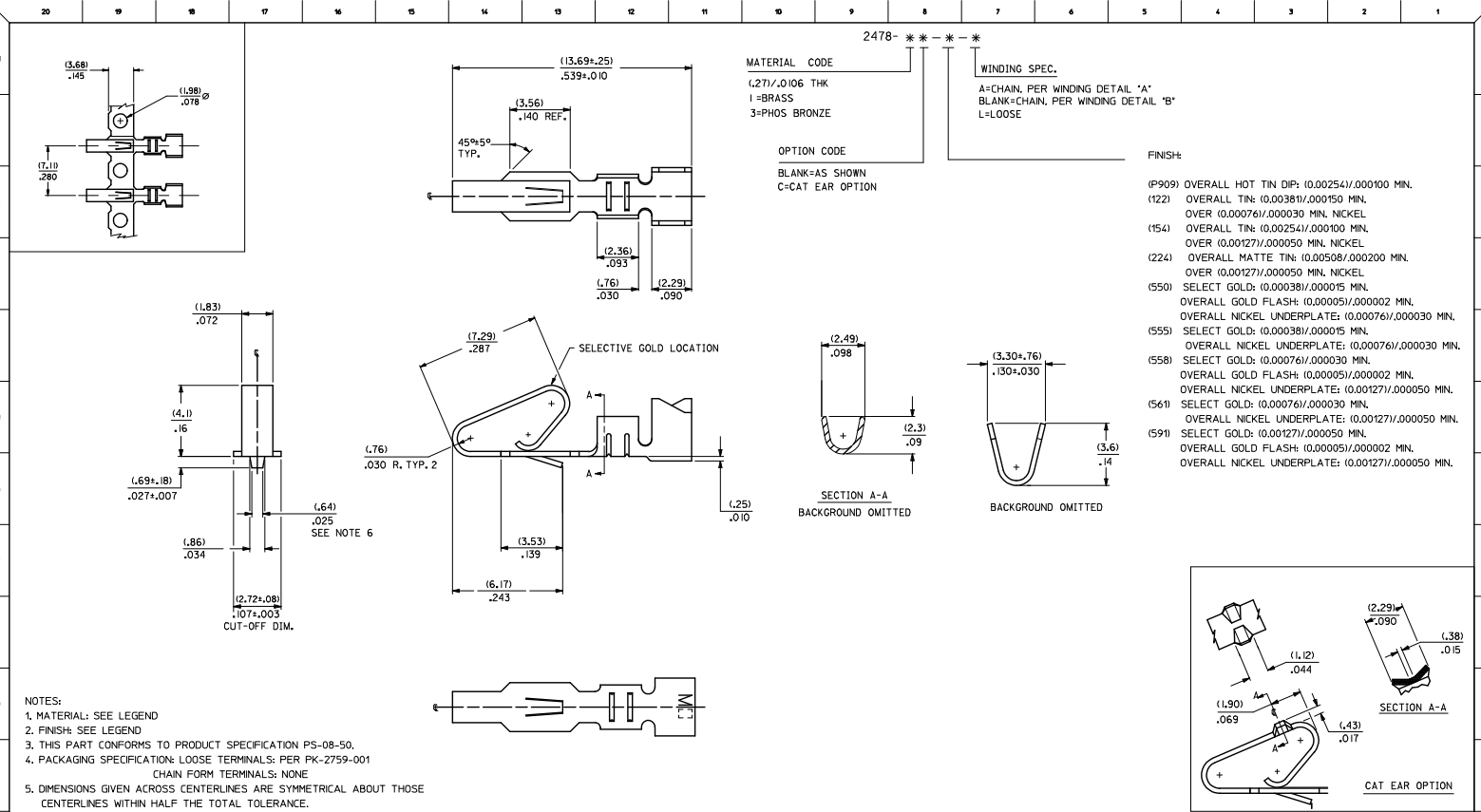
Stocking Distributor

Click to view price, real time Inventory, Delivery & Lifecycle Information:

[Molex Connector Corporation](#)  
[0008580104](#)

For any questions, you can email us directly:

[sales@integrated-circuit.com](mailto:sales@integrated-circuit.com)



MATERIAL CODE 2478-\*\*\*  
(.27)±.0106 THK  
1=BRASS  
3=PHOS BRONZE

WINDING SPEC.  
A=CHAIN, PER WINDING DETAIL 'A'  
BLANK=CHAIN, PER WINDING DETAIL 'B'  
L=LOOSE

OPTION CODE  
BLANK=AS SHOWN  
C=CAT EAR OPTION

FINISH:

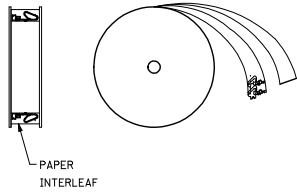
- (P909) OVERALL HOT TIN DIP: (0.00254)/.000100 MIN.
- (122) OVERALL TIN: (0.00381)/.000150 MIN.
- OVER (0.00076)/.000030 MIN. NICKEL
- (154) OVERALL TIN: (0.00254)/.000100 MIN.
- OVER (0.00127)/.000050 MIN. NICKEL
- (224) OVERALL MATTE TIN: (0.00508)/.000200 MIN.
- OVER (0.00127)/.000050 MIN. NICKEL
- (550) SELECT GOLD: (0.000381)/.000015 MIN.
- OVERALL GOLD FLASH: (0.00005)/.000002 MIN.
- OVERALL NICKEL UNDERPLATE: (0.00076)/.000030 MIN.
- (555) SELECT GOLD: (0.000381)/.000015 MIN.
- OVERALL NICKEL UNDERPLATE: (0.00076)/.000030 MIN.
- (558) SELECT GOLD: (0.00076)/.000030 MIN.
- OVERALL GOLD FLASH: (0.00005)/.000002 MIN.
- OVERALL NICKEL UNDERPLATE: (0.00127)/.000050 MIN.
- (561) SELECT GOLD: (0.00076)/.000030 MIN.
- OVERALL NICKEL UNDERPLATE: (0.00127)/.000050 MIN.
- (591) SELECT GOLD: (0.00127)/.000050 MIN.
- OVERALL GOLD FLASH: (0.00005)/.000002 MIN.
- OVERALL NICKEL UNDERPLATE: (0.00127)/.000050 MIN.

- NOTES:
1. MATERIAL: SEE LEGEND
  2. FINISH: SEE LEGEND
  3. THIS PART CONFORMS TO PRODUCT SPECIFICATION PS-08-50.
  4. PACKAGING SPECIFICATION: LOOSE TERMINALS: PER PK-2759-001  
CHAIN FORM TERMINALS: NONE
  5. DIMENSIONS GIVEN ACROSS CENTERLINES ARE SYMMETRICAL ABOUT THOSE CENTERLINES WITHIN HALF THE TOTAL TOLERANCE.
  6. (0.86 ±0.05)/.034 ±0.02 IS AN OPTIONAL DESIGN.
  7. CRIMP ACCEPTS 18 TO 24 AWG WIRE WITH (2.79)/.110 MAX. INSULATION DIAMETER. AND CAN ACCEPT (3.00)/.118 MAX. INSULATION DIAMETER WITH SPECIAL TOOLING.
  8. TERMINAL FOR USE IN 2139, 3001, 3069, AND 91813 SERIES HOUSINGS WITH (2.54)/.100 MAX. INSULATION DIAMETER. 2574, 6422, AND 5239 SERIES HOUSINGS WITH (2.79)/.110 MAX. INSULATION DIAMETER. AND 41695 SERIES HOUSING WITH (3.00)/.118 MAX. INSULATION DIAMETER.
  9. THIS PART CONFORMS TO CLASS B REQUIREMENTS OF COSMETIC SPECIFICATION PS-45499-002.

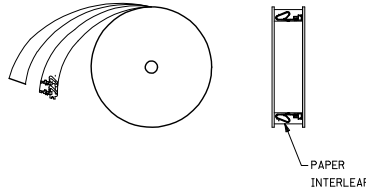
ADD WINDING VIEWS EC NO. LEF204-431 DRAWN/INSPER 2016/01/07 CHECK/QUIPER 2016/01/07 APPROVED/IN 2016/01/07 REV.	QUALITY SYMBOLS	GENERAL TOLERANCES (UNLESS SPECIFIED)	DIMENSION STYLE	SCALE	DESIGN UNITS	THIRD ANGLE PROJECTION	
	4 PLACES +---+---+---+---+ 3 PLACES +---+---+---+---+ 2 PLACES +---+---+---+---+ 1 PLACE +---+---+---+---+ 0 PLACE +---+---+---+---+	mm INCH +---+---+---+---+ +---+---+---+---+ +---+---+---+---+ +---+---+---+---+ +---+---+---+---+	DRAWN BY DATE SAMIEC 06/03/86 CHECKED BY DATE PATEL 06/03/86 APPROVED BY DATE FSMITH 2012/03/20	MM/IN	10:1	INCH	CRIMP TERMINAL 156 CENTERS 18 TO 24 GA WIRE <b>molex</b>
	ANGULAR ±1/2° DRAFT WHERE APPLICABLE MUST REMAIN WITHIN DIMENSIONS	MATERIAL NO. <b>SEE CHART</b>	DOCUMENT NO. <b>SD-2478</b>	SHEET NO. 1 OF 2			
	THIS DRAWING CONTAINS INFORMATION THAT IS PROPRIETARY TO MOLEX INCORPORATED AND SHOULD NOT BE USED WITHOUT WRITTEN PERMISSION						

2478-1-(****)*			2478-3-(****)*			2478-1C-(****)*			2478-3C-(****)*		
PART NO.	ENG. NO.		PART NO.	ENG. NO.		PART NO.	ENG. NO.		PART NO.	ENG. NO.	
08-50-0105	2478-1-(P909)		08-52-0071	2478-3-(P909)		08-50-0091	2478-1C-(154)		08-52-0044	2478-3C-(P909)	
08-50-0106	2478-1-(P909)L		08-52-0072	2478-3-(P909)L		08-50-0093	2478-1C-(154)L		08-52-0045	2478-3C-(P909)L	
08-56-0105	2478-1-(550)		08-65-0114	2478-3-(555)					08-52-0023	2478-3C-(154)	
08-56-0106	2478-1-(550)L		08-65-0115	2478-3-(555)L					08-52-0024	2478-3C-(154)L	
08-55-0103	2478-1-(555)		08-52-0811	2478-3-(154)							
08-55-0104	2478-1-(555)L		08-52-0812	2478-3-(154)L							
08-50-0119	2478-1-(122)		08-50-0281	2478-3-(122)							
08-50-0120	2478-1-(122)L			2478-3-(122)L							
08-50-0271	2478-1-(P909)A		08-58-0121	2478-3-(550)							
08-50-0015	2478-1-(154)		08-58-0122	2478-3-(550)L							
08-50-0016	2478-1-(154)L		08-58-0103	2478-3-(591)							
08-50-0063	2478-1-(224)		08-58-0104	2478-3-(591)L							
08-50-0064	2478-1-(224)L		08-58-0114	2478-3-(558)							
08-55-0133	2478-1-(561)		08-58-0115	2478-3-(558)L							
08-55-0134	2478-1-(561)L										

WINDING DETAIL 'A'



WINDING DETAIL 'B'



SEE SHEET 1 EC NO. 00704-431 DRAWN BY: 2016/07 CHECKED BY: 2016/07 APPROVED BY: 2016/07 DATE:	QUALITY SYMBOLS	GENERAL TOLERANCES (UNLESS SPECIFIED)	DRAGON STYLE	SCALE	DESIGN UNITS	THIRD ANGLE PROJECTION	
	∇=0	4 PLACES ± --- ± ---	MM/IN	---	INCH		
	∇=0	3 PLACES ± --- ± .010	DRAWN BY: SAMIEC	DATE: 06/03/86	TITLE: CRIMP TERMINAL		
	∇=0	2 PLACES ± 0.25 ± .014	CHECKED BY: PATEL	DATE: 06/03/86	156 CENTERS		
	1 PLACE ± 0.36 ± ---	APPROVED BY: FSMITH	DATE: 2012/03/20				
	0 PLACE ± --- ± ---	ANGULAR ± 1/2°	MATERIAL NO.	SEE CHART	DOCUMENT NO.	SHEET NO.	
		DRAFT WHERE APPLICABLE MUST REMAIN WITHIN DIMENSIONS			SD-2478	2 OF 2	
			THIS DRAWING CONTAINS INFORMATION THAT IS PROPRIETARY TO MOLEX INCORPORATED AND SHOULD NOT BE USED WITHOUT WRITTEN PERMISSION				