

## **Excellent Integrated System Limited**

Stocking Distributor

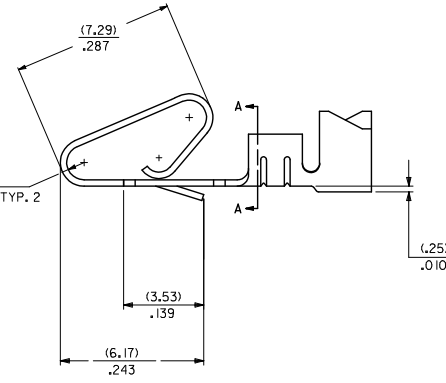
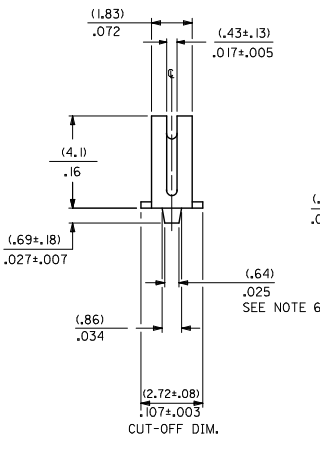
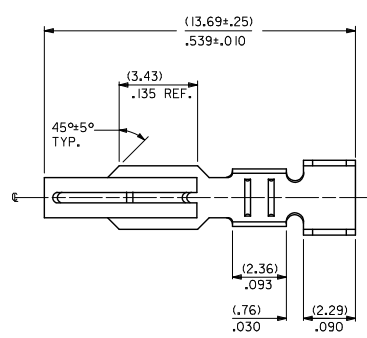
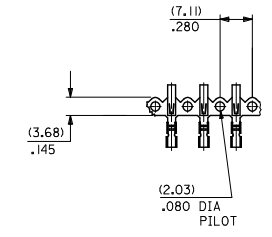
Click to view price, real time Inventory, Delivery & Lifecycle Information:

[Molex Connector Corporation](#)  
[0008580127](#)

For any questions, you can email us directly:  
[sales@integrated-circuit.com](mailto:sales@integrated-circuit.com)

J  
I  
H  
G  
F  
E  
D  
C  
B  
A

J  
I  
H  
G  
F  
E  
D  
C  
B  
A



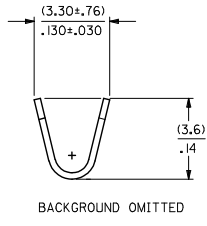
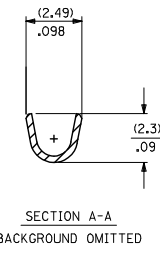
2878- \* - \* - \* - \*

MATERIAL CODE (.27)/.0106 THK

WINDING SPEC.  
A=PER WINDING DETAIL A  
B=PER WINDING DETAIL B  
L=LOOSE

PLATING CODE  
(P909) OVERALL HOT TIN DIP: (0.00254)/.000100 MIN.  
(550) SELECT GOLD: (0.00038)/.000015 MIN.  
OVERALL GOLD FLASH: (0.00005)/.000002 MIN.  
OVERALL NICKEL UNDERPLATE: (0.00076)/.000030 MIN.  
(555) SELECT GOLD: (0.00038)/.000015 MIN.  
OVERALL NICKEL UNDERPLATE: (0.00076)/.000030 MIN.

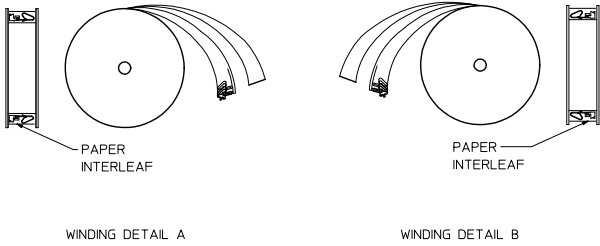
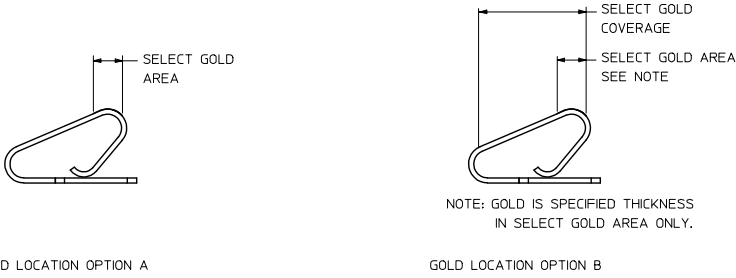
OPTION CODE  
A= OVERALL PLTGS, AND STD GOLD LOC  
B= LARGER SELECT GOLD LOCATION



1. MATERIAL: SEE LEGEND
2. FINISH: SEE LEGEND
3. THIS PART CONFORMS TO PRODUCT SPECIFICATIONS PS-08-50, PS-172160-0001
4. PACKAGING SPECIFICATION: LOOSE FORM: PK-2759-001  
CHAIN FORM: PK-2878-001
5. CRIMP ACCEPTS 18 TO 20 AWG WIRE WITH (2.79)/.110 MAX. INSULATION DIAMETER WHEN USED WITH 172159 SERIES HOUSINGS, (2.54)/.100 MAX INSULATION DIAMETER WHEN USED WITH 2139 OR 3069 SERIES HOUSINGS. CRIMP ACCEPTS (3.00)/.118 MAX. INSULATION DIAMETER WITH SPECIAL TOOLING.
6. (0.86±0.05)/.034±.002 IS AN OPTIONAL DESIGN.
7. PARTS CONFORM TO CLASS B REQUIREMENTS OF COSMETIC SPECIFICATION PS-45499-002.
8. MATING TERMINALS TO ROUND PINS IS NOT RECOMMENDED.

|  |   |  |                      |   |   |              |                      |                        |
|--|---|--|----------------------|---|---|--------------|----------------------|------------------------|
| <b>REVISE NOTES</b><br>REC NO: UCP2015-3216<br>DRAWN/TIPPER: 2015/02/06<br>CHKD/BELL: 2015/02/06<br>APPR/SMITH: 2015/02/18<br>DESCRIPTION: AM1<br>REV: | <b>QUALITY SYMBOLS</b><br>∇=0<br>∇=0<br>∇=0 | <b>GENERAL TOLERANCES (UNLESS SPECIFIED)</b> |                      | <b>DIMENSION STYLE</b><br>MM/IN   |   | SCALE<br>8:1 | DESIGN UNITS<br>INCH | THIRD ANGLE PROJECTION |
|  |   | 4 PLACES ± --- ± ---                         | DRAWN BY<br>COMSTOCK | DATE<br>11/29/88  | TITLE<br>TERMINAL, DBL. CANTILEVER<br>KK CRIMP TYPE<br>BIFURCATED<br><b>molex</b><br>DOCUMENT NO.<br>SD-2878<br>SHEET NO.<br>1 OF 2 |              |                      |                        |
|  |   | 3 PLACES ± --- ± .005                        | CHECKED BY<br>PATEL  | DATE<br>11/29/88  |   |              |                      |                        |
|  |   | 2 PLACES ± 0.13 ± .010                       | APPROVED BY<br>SMITH | DATE<br>2015/02/18  |   |              |                      |                        |
| 1 PLACE ± 0.25 ± ---<br>0 PLACE ± --- ± ---  | MATERIAL NO.<br>SEE CHART                   |  |                      |   |   |              |                      |                        |
| DRAFT WHERE APPLICABLE MUST REMAIN WITHIN DIMENSIONS   |   | ANGULAR ±1/2°                                |                      | THIS DRAWING CONTAINS INFORMATION THAT IS PROPRIETARY TO MOLEX INCORPORATED AND SHOULD NOT BE USED WITHOUT WRITTEN PERMISSION |   |              |                      |                        |

| 2878-A-A(*)* |                 |  | 2878-B-A(*)* |                   |  | 2878-A-B(*)* |                |  |
|--------------|-----------------|--|--------------|-------------------|--|--------------|----------------|--|
| PART NO.     | ENG. NO.        |  | PART NO.     | ENG. NO.          |  | PART NO.     | ENG. NO.       |  |
| 08-50-0115   | 2878-A-A(P909)B |  |              |                   |  | 08-55-0138   | 2878-A-B(555)B |  |
| 08-50-0116   | 2878-A-A(P909)L |  |              |                   |  |              | 2878-A-B(555)L |  |
|              |                 |  | 08-52-0126   | * 2878-B-A(P909)B |  |              |                |  |
|              |                 |  | 08-52-0127   | * 2878-B-A(P909)L |  |              |                |  |
|              |                 |  | 08-65-0118   | * 2878-B-A(555)B  |  |              |                |  |
|              |                 |  | 08-65-0119   | * 2878-B-A(555)L  |  |              |                |  |
|              |                 |  | 08-58-0127   | * 2878-B-A(550)B  |  |              |                |  |
|              |                 |  | 08-58-0128   | * 2878-B-A(550)L  |  |              |                |  |



|  |                                      |                                       |                       |                        |                      |                     |                    |                        |   |
|--|--------------------------------------|---------------------------------------|-----------------------|------------------------|----------------------|---------------------|--------------------|------------------------|---|
| <b>SEE SHEET 1</b><br>EC NO: UCP2015-3216<br>DRAWN BY: DRINKUPPER<br>CHKD: BELL<br>APPR: SMITH<br>2015/02/06<br>2015/02/06<br>2015/02/18 | QUALITY SYMBOLS<br>∇=0<br>∇=0<br>∇=0 | GENERAL TOLERANCES (UNLESS SPECIFIED) |                       | DIMENSION STYLE        |                      | SCALE               | DESIGN UNITS       | THIRD ANGLE PROJECTION |   |
|  |                                      |                                       |                       | MM/IN                  |                      | 8:1                 | INCH               |                        |   |
|  |                                      | 4 PLACES ± --- ± ---                  | 3 PLACES ± --- ± .005 | 2 PLACES ± 0.13 ± .010 | 1 PLACE ± 0.25 ± --- | 0 PLACE ± --- ± --- | DRAWN BY: COMSTOCK | DATE: 11/29/88         | TITLE: TERMINAL, DBL. CANTILEVER KK CRIMP TYPE BIFURCATED |
|  |                                      | ANGULAR ± 1/2°                        |                       | MATERIAL NO.           |                      | DOCUMENT NO.        |                    | SHEET NO.              |   |
| DRAFT WHERE APPLICABLE MUST REMAIN WITHIN DIMENSIONS   |                                      | SEE CHART                             |                       | SD-2878                |                      | 2 OF 2              |                    |                        |   |
| THIS DRAWING CONTAINS INFORMATION THAT IS PROPRIETARY TO MOLEX INCORPORATED AND SHOULD NOT BE USED WITHOUT WRITTEN PERMISSION            |                                      |                                       |                       |                        |                      |                     |                    |                        |   |