

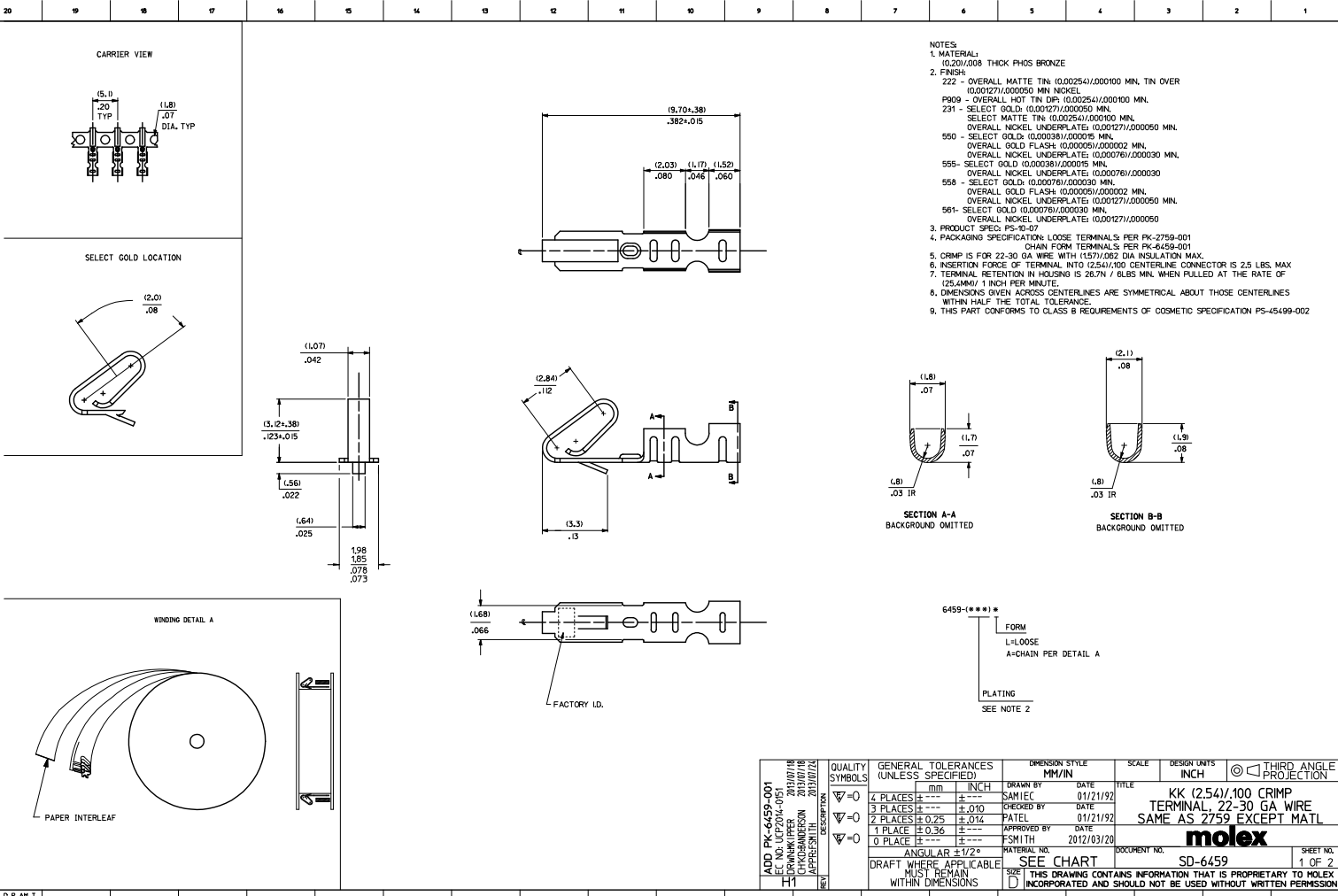
Excellent Integrated System Limited

Stocking Distributor

Click to view price, real time Inventory, Delivery & Lifecycle Information:

[Molex Connector Corporation](#)
[0008650812](#)

For any questions, you can email us directly:
sales@integrated-circuit.com



ADD PK-6459-001 EC NO. L1P2/24-0051 H1 DRN/ANK/LEPER 2013/07/18 CH/CRANK/BERSON 2013/07/18 APP/RES/MLT 2013/07/18 DESIGNED BY:	QUALITY SYMBOLS	GENERAL TOLERANCES (UNLESS SPECIFIED)	DIMENSION STYLE	SCALE	DESIGN UNITS	THIRD ANGLE PROJECTION	
	4 PLACES ±.010 3 PLACES ±.010 2 PLACES ±0.25 ±.014 1 PLACE ±0.36 ±.014 0 PLACE ±.010 ±.014	MM/INCH	MM/INCH	DATE	INCH		
	DRAWN BY: SAMIEC CHECKED BY: DATE APPROVED BY: DATE MATERIAL NO. DATE SEE CHART DRAFT WHERE APPLICABLE MUST REMAIN WITHIN DIMENSIONS THIS DRAWING CONTAINS INFORMATION THAT IS PROPRIETARY TO MOLEX INCORPORATED AND SHOULD NOT BE USED WITHOUT WRITTEN PERMISSION	DATE	DATE	DATE	DATE		
	TITLE: KK (2.54/.100) CRIMP TERMINAL 22-30 GA WIRE SAME AS 2759 EXCEPT MATL DOCUMENT NO.: SD-6459 SHEET NO.: 1 OF 2						

