

Excellent Integrated System Limited

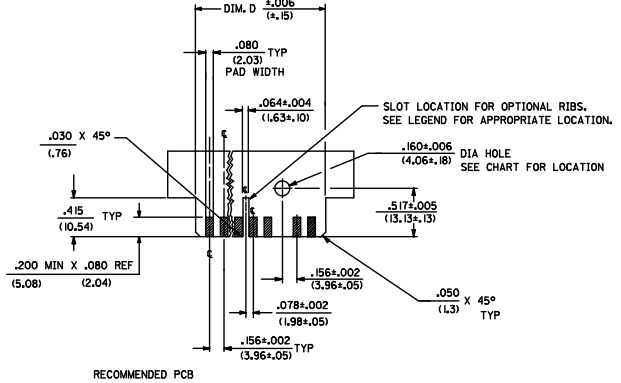
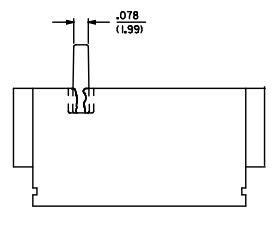
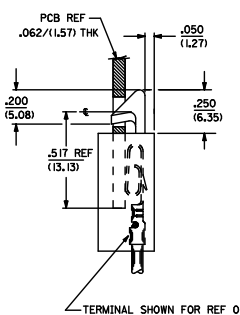
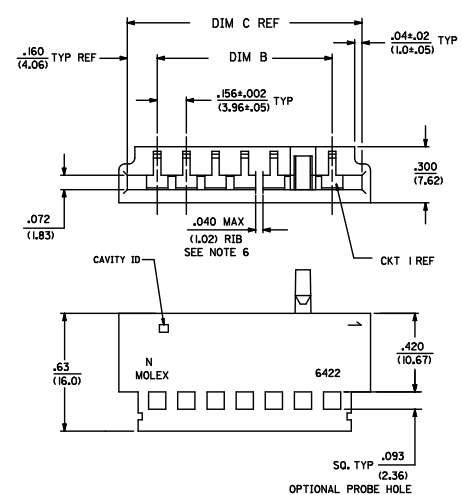
Stocking Distributor

Click to view price, real time Inventory, Delivery & Lifecycle Information:

[Molex Connector Corporation](#)
[0009011056](#)

For any questions, you can email us directly:

sales@integrated-circuit.com



- NOTES:
1. MATERIAL: UNFILLED NYLON, UL94V-2. COLOR: NATURAL
 2. FINISH: N/A
 3. THIS PART CONFORMS TO PS-08-50.
 4. PACKAGING SPECIFICATION: PK-6422-001
 5. CONNECTOR TO BE USED WITH CRIMP TERMINAL SERIES 2878, 2478, 2578
 6. RIB WIDTH .040 / 1.02 REF, EXCEPT WHEN RIB IS ADJACENT TO THE HOOK, THEN RIB WIDTH IS .025 ±.006 / 0.64 ±0.15
 7. DIMENSIONS GIVEN ACROSS CENTERLINES ARE SYMMETRICAL ABOUT THOSE CENTERLINES WITHIN ONE HALF THE TOTAL TOLERANCE.
 8. FOR THIS PART WITHOUT HOOK, SEE 2574 SERIES.
 9. THIS PART CONFORMS TO CLASS B REQUIREMENTS OF COSMETIC SPECIFICATION PS-45499-002.

NO. OF CKT'S	DIM. C	DIM. B	DIM. D
3	.632 (16.05)	.312±.002 (7.92±.05)	.618 (15.70)
4	.788 (20.02)	.468±.002 (11.89±.05)	.774 (19.66)
5	.944 (23.98)	.624±.003 (15.85±.08)	.922 (23.42)
6	1.100 (27.94)	.780±.003 (19.8±.08)	1.078 (27.38)
7	1.256 (31.90)	.936±.003 (23.77±.08)	1.232 (31.29)
8	1.412 (35.86)	1.092±.004 (27.74±.10)	1.388 (35.26)
9	1.568 (39.83)	1.248±.004 (31.70±.10)	1.544 (39.22)
10	1.724 (43.79)	1.404±.006 (35.66±.15)	1.700 (43.18)
11	1.880 (47.75)	1.560±.006 (39.62±.15)	1.854 (47.09)
12	2.036 (51.71)	1.716±.006 (43.59±.15)	2.010 (51.05)
13	2.192 (55.68)	1.872±.006 (47.55±.15)	2.164 (54.97)
14	2.348 (59.64)	2.028±.007 (51.51±.18)	2.318 (58.88)
15	2.504 (63.60)	2.184±.007 (55.47±.18)	2.474 (62.84)
16	2.660 (67.56)	2.340±.007 (59.44±.18)	2.631 (66.83)
17	2.816 (71.53)	2.496±.008 (63.40±.20)	2.784 (70.71)
18	2.972 (75.49)	2.652±.009 (67.36±.23)	2.954 (75.03)
19	3.128 (79.45)	2.808±.009 (71.32±.23)	3.095 (78.61)
20	3.284 (83.41)	2.964±.009 (75.29±.23)	3.251 (82.59)
21	3.440 (87.38)	3.120±.010 (79.25±.25)	3.407 (86.54)
22	3.596 (91.34)	3.276±.011 (83.21±.25)	3.562 (90.47)
23	3.752 (95.30)	3.432±.011 (87.17±.28)	3.716 (94.39)
24	3.908 (99.26)	3.588±.012 (91.14±.30)	3.871 (98.32)

ADD NOTES EC NO. UPT202-3660 2017/05/10 DRAWN/INSPER 2017/05/10 CHK/CHKREVISION 2017/05/10 APPROVED/REV 2017/05/10	QUALITY SYMBOLS ∇=0 ∇=0 ∇=0	GENERAL TOLERANCES (UNLESS SPECIFIED) mm INCH 4 PLACES ±.010 ±.004 3 PLACES ±.010 ±.004 2 PLACES ±.025 ±.014 1 PLACE ±.036 ±.014 ANGULAR ±1/2°	DIMENSION STYLE IN/MM DRAWN BY DATE CHECKED BY DATE APPROVED BY DATE	SCALE 4:1 DESIGN UNITS INCH THIRD ANGLE PROJECTION	TITLE EDGE CARD CONNECTOR .156(3.96) CL CRIMP 2574 WITH HOOK	MATERIAL NO. SEE CHART	DOCUMENT NO. SD-6422	SHEET NO. 1 OF 2
	DRAFT WHERE APPLICABLE MUST REMAIN WITHIN DIMENSIONS							
	THIS DRAWING CONTAINS INFORMATION THAT IS PROPRIETARY TO MOLEX INCORPORATED AND SHOULD NOT BE USED WITHOUT WRITTEN PERMISSION							
	molex							

6422 - N * * *

NO. OF CIRCUITS
HOOK LOCATION CODE
(ON $\frac{1}{2}$ OF CKT)

CODE	ON CKT
A	2
B	3
C	4
D	5
E	6
F	7
G	8
H	9
J	10

PROBE HOLE
BLANK-WITHOUT HOLE
A= WITH HOLE

RIB LOCATION CODE (BETWEEN CKTS)

CODE	BETWN CKTS
1	N/A
2	2&3
3	2&3
4	3&4 5&6
5	4&5 7&8
6	6&7 RIB RECESSED .075 OFF OF TOP OF PART
7	4&5 7&8 11&12

EDP NO.	ENG. NO.	CKTS
009-01-1038	6422-3A1	3
009-01-1036	6422-3A1-A	3
009-01-1058	6422-5A1	5
009-01-1156	6422-15H1-A	15
009-01-1068	6422-6A1	6
009-01-1067	6422-6C2	6
009-01-1098	6422-9C4	9
009-01-1096	6422-9C4-A	9
009-01-1108	6422-10H5	10
009-01-1128	6422-12H6	12
009-01-1056	6422-5A1-A	5
009-01-1158	6422-15H7	15

SEE SHEET 1

REV	DATE	BY	CHKD	DESCRIPTION
1	6/8/95			REVISE ONLY ON CAD SYSTEM

EDGE CARD CONNECTOR
(5.96) / 156& CRIMP TYPE
2574 WITH HOOK
MOLLEX INCORPORATED
SD: 6422