

Excellent Integrated System Limited

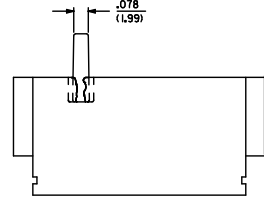
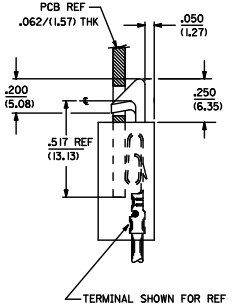
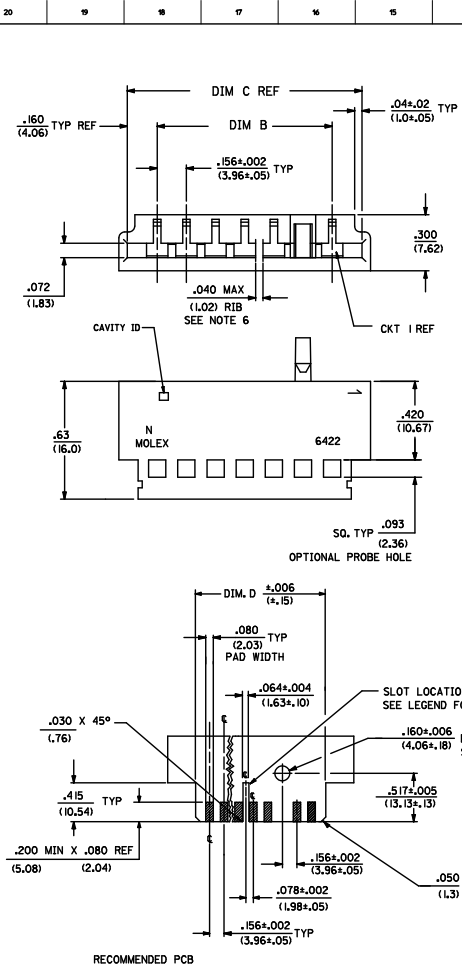
Stocking Distributor

Click to view price, real time Inventory, Delivery & Lifecycle Information:

[Molex Connector Corporation](#)
[0009011067](#)

For any questions, you can email us directly:

sales@integrated-circuit.com



- NOTES:
1. MATERIAL: UNFILLED NYLON, UL94V-2. COLOR: NATURAL
 2. FINISH: N/A
 3. THIS PART CONFORMS TO PS-08-50.
 4. PACKAGING SPECIFICATION: PK-6422-001
 5. CONNECTOR TO BE USED WITH CRIMP TERMINAL SERIES 2878, 2478, 2578
 6. RIB WIDTH .040 / 1.02 REF, EXCEPT WHEN RIB IS ADJACENT TO THE HOOK, THEN RIB WIDTH IS .025 ±.006 / 0.64 ±0.15
 7. DIMENSIONS GIVEN ACROSS CENTERLINES ARE SYMMETRICAL ABOUT THOSE CENTERLINES WITHIN ONE HALF THE TOTAL TOLERANCE.
 8. FOR THIS PART WITHOUT HOOK, SEE 2574 SERIES.
 9. THIS PART CONFORMS TO CLASS B REQUIREMENTS OF COSMETIC SPECIFICATION PS-45499-002.

NO. OF CKT'S	DIM. C	DIM. B	DIM. D
3	.632 (16.05)	.312±.002 (7.92±.05)	.618 (15.70)
4	.788 (20.02)	.468±.002 (11.89±.05)	.774 (19.66)
5	.944 (23.98)	.624±.003 (15.85±.08)	.922 (23.42)
6	1.100 (27.94)	.780±.003 (19.8±.08)	1.078 (27.38)
7	1.256 (31.90)	.936±.003 (23.77±.08)	1.232 (31.29)
8	1.412 (35.86)	1.092±.004 (27.74±.10)	1.388 (35.26)
9	1.568 (39.83)	1.248±.004 (31.70±.10)	1.544 (39.22)
10	1.724 (43.79)	1.404±.006 (35.66±.15)	1.700 (43.18)
11	1.880 (47.75)	1.560±.006 (39.62±.15)	1.854 (47.09)
12	2.036 (51.71)	1.716±.006 (43.59±.15)	2.010 (51.05)
13	2.192 (55.68)	1.872±.006 (47.55±.15)	2.164 (54.97)
14	2.348 (59.64)	2.028±.007 (51.51±.18)	2.318 (58.88)
15	2.504 (63.60)	2.184±.007 (55.47±.18)	2.474 (62.84)
16	2.660 (67.56)	2.340±.007 (59.44±.18)	2.631 (66.83)
17	2.816 (71.53)	2.496±.008 (63.40±.20)	2.784 (70.71)
18	2.972 (75.49)	2.652±.009 (67.36±.23)	2.954 (75.03)
19	3.128 (79.45)	2.808±.009 (71.32±.23)	3.095 (78.61)
20	3.284 (83.41)	2.964±.009 (75.29±.23)	3.251 (82.59)
21	3.440 (87.38)	3.120±.010 (79.25±.25)	3.407 (86.54)
22	3.596 (91.34)	3.276±.011 (83.2±.25)	3.562 (90.47)
23	3.752 (95.30)	3.432±.011 (87.17±.28)	3.716 (94.39)
24	3.908 (99.26)	3.588±.012 (91.14±.30)	3.871 (98.32)

ADD NOTES EC NO. UPT202-3660 2017/05/10 DRAWN: J. PEREZ 2017/05/10 CHECKED: R. ANDERSON 2017/05/10 APPROVED: M. ANDERSON 2017/05/10 REV:	QUALITY SYMBOLS ∇=0 ∇=0 ∇=0	GENERAL TOLERANCES (UNLESS SPECIFIED) mm INCH 4 PLACES ±.010 ±.010 3 PLACES ±.025 ±.014 2 PLACES ±.036 ±.014 1 PLACE ±.036 ±.014 0 PLACE ±.036 ±.014 ANGULAR ±1/2°	DIMENSION STYLE IN/MM DRAWN BY DATE CHECKED BY DATE APPROVED BY DATE	SCALE 4:1 DESIGN UNITS INCH THIRD ANGLE PROJECTION	TITLE EDGE CARD CONNECTOR .156(3.96) CL CRIMP 2574 WITH HOOK molex	MATERIAL NO. SEE CHART DRAFT WHERE APPLICABLE MUST REMAIN WITHIN DIMENSIONS	DOCUMENT NO. SD-6422	SHEET NO. 1 OF 2
	THIS DRAWING CONTAINS INFORMATION THAT IS PROPRIETARY TO MOLEX INCORPORATED AND SHOULD NOT BE USED WITHOUT WRITTEN PERMISSION							
	INCORPORATED AND SHOULD NOT BE USED WITHOUT WRITTEN PERMISSION							
	INCORPORATED AND SHOULD NOT BE USED WITHOUT WRITTEN PERMISSION							

6422 - N * * *

NO. OF CIRCUITS
HOOK LOCATION CODE
(ON ♯ OF CKT)

CODE	ON CKT
A	2
B	3
C	4
D	5
E	6
F	7
G	8
H	9
J	10

PROBE HOLE
BLANK=WITHOUT HOLE
A= WITH HOLE

RIB LOCATION CODE (BETWEEN CKTS)

CODE	BETWN CKTS
1	N/A
2	2&3
3	2&3
4	3&4 5&6
5	4&5 7&8
6	6&7 RIB RECESSED .075 OFF OF TOP OF PART
7	4&5 7&8 11&12

EDP NO.	ENG. NO.	CKTS
009-01-1038	6422-3A1	3
009-01-1036	6422-3A1-A	3
009-01-1058	6422-5A1	5
009-01-1156	6422-15H1-A	15
009-01-1068	6422-6A1	6
009-01-1067	6422-6C2	6
009-01-1098	6422-9C4	9
009-01-1096	6422-9C4-A	9
009-01-1108	6422-10H5	10
009-01-1128	6422-12H6	12
009-01-1056	6422-5A1-A	5
009-01-1158	6422-15H7	15

SEE SHEET 1

VALUATION APPROV DATE: 12/13/95 NAME: J. BLANK TITLE: MGR	REVISE ONLY ON CAD SYSTEM EDGE CARD CONNECTOR (5.96) / 1564 CRIMP TYPE 2574 WITH HOOK MOLEX INCORPORATED DATE: 6/8/95	SD: 6422 SEE CHART
--	--	-----------------------