



Distributor of Molex Connector Corporation: Excellent Integrated System Limited
Datasheet of 0009481095 - Connector Receptacle 9 Position 0.156" (3.96mm) Gold Through Hole

Contact us: sales@integrated-circuit.com Website: www.integrated-circuit.com

Excellent Integrated System Limited

Stocking Distributor

Click to view price, real time Inventory, Delivery & Lifecycle Information:

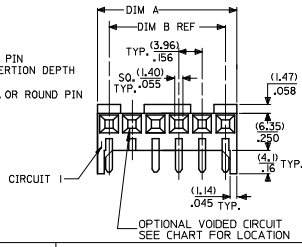
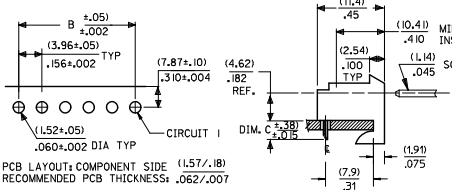
[Molex Connector Corporation](#)
[0009481095](#)

For any questions, you can email us directly:
sales@integrated-circuit.com

Contact us: sales@integrated-circuit.com Website: www.integrated-circuit.com

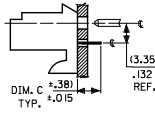
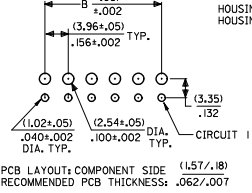
RIGHT ANGLE

HOUSING: 41815-N-AN-** (WITH RAMP)
HOUSING: 41815-N-DN-** (WITHOUT RAMP)



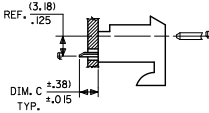
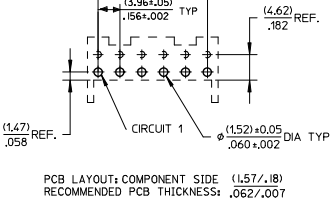
BOTTOM ENTRY

HOUSING: 41815-N-AN-** (WITH RAMP)
HOUSING: 41815-N-DN-** (WITHOUT RAMP)



TOP ENTRY

HOUSING: 41815-N-AN-** (WITH RAMP)
HOUSING: 41815-N-DN-** (WITHOUT RAMP)



DIM. B	DIM. A	NO. OF CKTS
(3.96)	(3.82+/.25)	2
.156	.108+0.00	2
(7.92)	(1.179+/.25)	3
.312	.464+0.00	3
(11.89)	(1.159+/.25)	4
.468	.620+0.00	4
(15.85)	(1.191+/.25)	5
.624	.776+0.00	5
(19.81)	(2.367+/.25)	6
.780	.932+0.00	6
(23.77)	(2.764+/.30)	7
.936	1.088+0.00	7
(27.74)	(3.160+/.30)	8
1.092	1.244+0.00	8
(31.70)	(3.556+/.30)	9
1.248	1.400+0.00	9
(35.66)	(3.952+/.30)	10
1.404	1.556+0.00	10
(39.62)	(4.348+/.30)	11
1.560	1.712+0.00	11
(43.59)	(4.745+/.30)	12
1.716	1.868+0.00	12
(47.55)	(5.141+/.30)	13
1.872	2.024+0.00	13
(51.51)	(5.537+/.36)	14
2.028	2.180+0.00	14
(55.47)	(5.933+/.36)	15
2.184	2.336+0.00	15

- NOTES:
1. MATERIAL: HOUSING: POLYESTER, RATED UL 94V-0. COLOR: NATURAL (WHITE)
2. FINISH:
(197) = OVERALL REFLOWED MATTE TIN: 0.00152/0.000060 MIN OVER 0.00127/0.000050 MIN NICKEL.
(208) = SELECT GOLD: 0.00038/0.000015 MIN. SELECT TIN: 0.00254/0.000100 MIN. OVERALL NICKEL UNDERPLATE: 0.00127/0.000050 MIN. SELECT TIN: 0.00254/0.000100 MIN.
(228) = SELECT GOLD: 0.00076/0.000030 MIN. SELECT TIN: 0.00254/0.000100 MIN. OVERALL NICKEL UNDERPLATE: 0.00127/0.000050 MIN.
(909) = OVERALL TIN: 0.00254/0.000100 MIN.
3. PRODUCT SPECIFICATION: PS-08-50
4. PACKAGING: SEE CHARTS
5. FOR TOP ENTRY AND RIGHT ANGLE ASSEMBLIES WITH LOWER INSERTION FORCE USE SINGLE BEAM CONTACT, (TERMINAL NO. 4244)
6. SOLDERABILITY: WHEN PARTS ARE SOLDERED AT A TEMPERATURE OF 230°C (446°F) FOR 5 SECONDS EACH SOLDERED SURFACE SHALL BE A MINIMUM OF 95% COVERED WITH A SMOOTH CONTINUOUS ADHERENT COATING. FOR ADDITIONAL INFORMATION SEE SMES-152.
7. PARTS ARE STACKABLE END TO END ON (3.96)/.156 CENTERLINE.
8. THIS PART CONFORMS TO CLASS B REQUIREMENTS OF COSMETIC SPEC PS-45499-002.

ADD: 41815-0687
ECC NO: IJCP2015-9357
DRAWN BY: PER
CHKD BY: NGUYEN
APPROV: SMITH

2014/09/30
2014/09/30
2014/10/23

DESCRIPTION

QUALITY SYMBOLS
▽=0
▽=0
▽=0

GENERAL TOLERANCES (UNLESS SPECIFIED)

	mm	INCH
4 PLACES	±.10	±.005
3 PLACES	±.15	±.0075
2 PLACES	±.25	±.010
1 PLACE	±.38	±.015
0 PLACE	±.51	±.020

ANGULAR ±1/2°
DRAFT WHERE APPLICABLE
MUST REMAIN WITHIN DIMENSIONS

DIMENSIONAL STYLE: MM/IN

DRAWN BY	DATE
SAMIEC	01/28/87
CHECKED BY	DATE
SAMIEC	01/28/87
APPROVED BY	DATE
LENZ	01/28/87

MATERIAL NO. SEE CHART
DOCUMENT NO. SDA-41815

SCALE: --

DESIGN UNITS: INCH

THIRD ANGLE PROJECTION

KK 156 HOUSING PCB
41815 SERIES

molex

SHEET NO. 1 OF *

THIS DRAWING CONTAINS INFORMATION THAT IS PROPRIETARY TO MOLEX INCORPORATED AND SHOULD NOT BE USED WITHOUT WRITTEN PERMISSION