



Distributor of Molex Connector Corporation: Excellent Integrated System Limited
Datasheet of 0009482047 - Connector Receptacle 4 Position 0.156" (3.96mm) Tin Through Hole

Contact us: sales@integrated-circuit.com Website: www.integrated-circuit.com

Excellent Integrated System Limited

Stocking Distributor

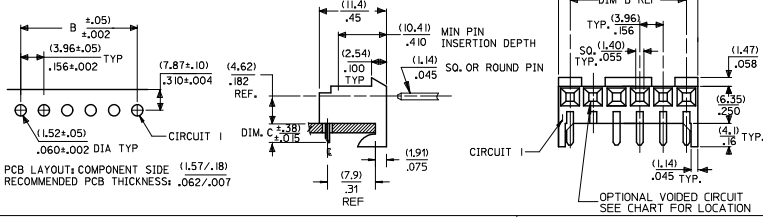
Click to view price, real time Inventory, Delivery & Lifecycle Information:

[Molex Connector Corporation](#)
[0009482047](#)

For any questions, you can email us directly:
sales@integrated-circuit.com

RIGHT ANGLE

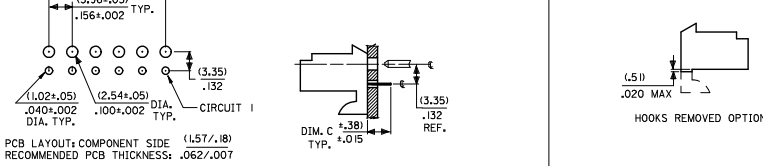
HOUSING: 41815-N-AN-**-*(WITH RAMP)
HOUSING: 41815-N-DN-**-*(WITHOUT RAMP)



| DIM. B | DIM. A | NO. OF CKTS |
|---------|-------------|-------------|
| (3.96) | (1.82±.25) | 2 |
| .156 | .408±0.010 | 2 |
| (7.92) | (1.179±.25) | 3 |
| .312 | .464±0.010 | 3 |
| (11.89) | (1.15±.25) | 4 |
| .468 | .620±0.010 | 4 |
| (15.85) | (1.97±.25) | 5 |
| .624 | .776±0.010 | 5 |
| (19.81) | (2.347±.25) | 6 |
| .780 | .932±0.010 | 6 |
| (23.77) | (2.764±.30) | 7 |
| .936 | 1.088±0.012 | 7 |
| (27.74) | (3.161±.25) | 8 |
| 1.092 | 1.244±0.012 | 8 |
| (31.70) | (3.556±.30) | 9 |
| 1.248 | 1.400±0.012 | 9 |
| (35.66) | (3.952±.30) | 10 |
| 1.404 | 1.556±0.012 | 10 |
| (39.62) | (4.348±.30) | 11 |
| 1.560 | 1.712±0.012 | 11 |
| (43.59) | (4.745±.30) | 12 |
| 1.716 | 1.868±0.012 | 12 |
| (47.55) | (5.141±.30) | 13 |
| 1.872 | 2.024±0.012 | 13 |
| (51.51) | (5.537±.36) | 14 |
| 2.028 | 2.180±0.014 | 14 |
| (55.47) | (5.933±.36) | 15 |
| 2.184 | 2.336±0.014 | 15 |

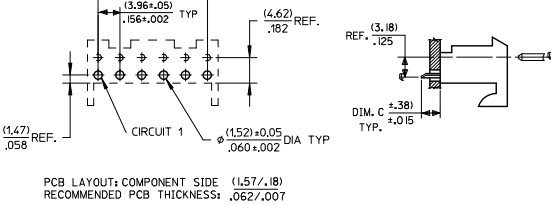
BOTTOM ENTRY

HOUSING: 41815-N-AN-**-*(WITH RAMP)
HOUSING: 41815-N-DN-**-*(WITHOUT RAMP)



TOP ENTRY

HOUSING: 41815-N-AN-**-*(WITH RAMP)
HOUSING: 41815-N-DN-**-*(WITHOUT RAMP)



- NOTES:
- MATERIAL: HOUSING: POLYESTER, RATED UL 94V-0. COLOR: NATURAL (WHITE)
 - FINISH:
 - (197) = OVERALL REFLOWED MATTE TIN: 0.00152/.000060 MIN OVER 0.00127/.000050 MIN NICKEL.
 - (208) = SELECT GOLD: 0.00038/.000015 MIN. SELECT TIN: 0.00254/.000100 MIN. OVERALL NICKEL UNDERPLATE: 0.00127/.000050 MIN.
 - (228) = SELECT GOLD: 0.00076/.000030 MIN. SELECT TIN: 0.00254/.000100 MIN. OVERALL NICKEL UNDERPLATE: 0.00127/.000050 MIN.
 - (909) = OVERALL TIN: 0.00254/.000100 MIN.
 - PRODUCT SPECIFICATION: PS-08-50
 - PACKAGING: SEE CHARTS
 - FOR TOP ENTRY AND RIGHT ANGLE ASSEMBLIES WITH LOWER INSERTION FORCE USE SINGLE BEAM CONTACT, (TERMINAL NO. 4244)
 - SOLDERABILITY: WHEN PARTS ARE SOLDERED AT A TEMPERATURE OF 230°C (446°F) FOR 5 SECONDS EACH SOLDERED SURFACE SHALL BE A MINIMUM OF 95% COVERED WITH A SMOOTH CONTINUOUS ADHERENT COATING. FOR ADDITIONAL INFORMATION SEE SMES-152.
 - PARTS ARE STACKABLE END TO END ON (3.96)/.156 CENTERLINE.
 - THIS PART CONFORMS TO CLASS B REQUIREMENTS OF COSMETIC SPEC PS-45499-002.

| | | | | | | | | |
|---|--------------------------------------|--|--|------------------|--|---|--------------|------------------------|
| ADD: 41815-0687 LEC NO: UCP2015-0357 DRAWN BY: PPER 2014/09/30 CHKD BY: NGUYEN 2014/09/30 APPR: SMITH 2014/10/23 REV AN3 | QUALITY SYMBOLS ∇=0 ∇=0 ∇=0 | GENERAL TOLERANCES (UNLESS SPECIFIED) | | DIMENSION STYLE | | SCALE | DESIGN UNITS | THIRD ANGLE PROJECTION |
| | | | | MM/IN | | -- | INCH | |
| | | | | DRAWN BY DATE | | TITLE | | |
| | | 4 PLACES ± --- ± --- | | SAMIEC 01/28/87 | | KK 156 HOUSING PCB 41815 SERIES | | |
| | | 3 PLACES ± --- ± .010 | | CHECKED BY DATE | | | | |
| | | 2 PLACES ± 0.25 ± .015 | | SAMIEC 01/28/87 | | | | |
| | | 1 PLACE ± 0.38 ± --- | | APPROVED BY DATE | | | | |
| | | 0 PLACE ± ± | | LENZ 01/28/87 | | MATERIAL NO. DOCUMENT NO. SHEET NO. SEE CHART SDA-41815 1 OF * | | |
| | | ANGULAR ±1/2° | | MATERIAL NO. | | | | |
| | | DRAFT WHERE APPLICABLE MUST REMAIN WITHIN DIMENSIONS | | SEE CHART | | | | |
| | | | | SIZE B | | THIS DRAWING CONTAINS INFORMATION THAT IS PROPRIETARY TO MOLEX INCORPORATED AND SHOULD NOT BE USED WITHOUT WRITTEN PERMISSION | | |