



Distributor of Molex Connector Corporation: Excellent Integrated System Limited
Datasheet of 0009482061 - Connector Receptacle 6 Position 0.156" (3.96mm) Tin Through
Hole, Right Angle

Contact us: sales@integrated-circuit.com Website: www.integrated-circuit.com

Excellent Integrated System Limited

Stocking Distributor

Click to view price, real time Inventory, Delivery & Lifecycle Information:

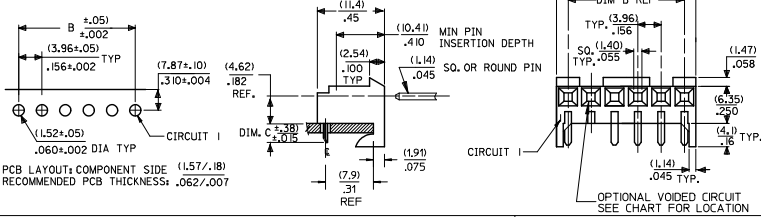
[Molex Connector Corporation](#)
[0009482061](#)

For any questions, you can email us directly:
sales@integrated-circuit.com

Contact us: sales@integrated-circuit.com Website: www.integrated-circuit.com

RIGHT ANGLE

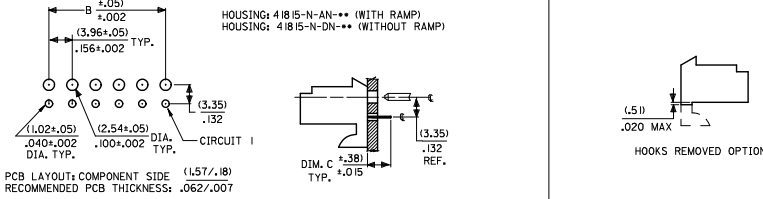
HOUSING: 41815-N-AN-** (WITH RAMP)
 HOUSING: 41815-N-DN-** (WITHOUT RAMP)



DIM. B	DIM. A	NO. OF CKTS
(3.96)	(1.02±.25)	2
.156	.408±0.010	2
(7.92)	(1.179±.25)	3
.312	.464±0.010	3
(11.89)	(1.575±.25)	4
.468	.620±0.010	4
(15.85)	(1.971±.25)	5
.624	.776±0.010	5
(19.81)	(2.367±.25)	6
.780	.932±0.010	6
(23.77)	(2.764±.30)	7
.936	1.088±0.012	7
(27.74)	(3.161±.30)	8
1.092	1.244±0.012	8
(31.70)	(3.558±.30)	9
1.248	1.400±0.012	9
(35.66)	(3.952±.30)	10
1.404	1.556±0.012	10
(39.62)	(4.348±.30)	11
1.560	1.712±0.012	11
(43.59)	(4.745±.30)	12
1.716	1.868±0.012	12
(47.55)	(5.141±.30)	13
1.872	2.024±0.012	13
(51.51)	(5.537±.36)	14
2.028	2.180±0.014	14
(55.47)	(5.933±.36)	15
2.184	2.336±0.014	15

BOTTOM ENTRY

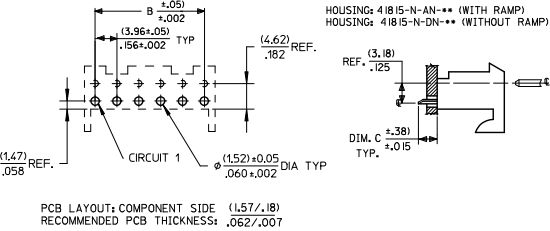
HOUSING: 41815-N-AN-** (WITH RAMP)
 HOUSING: 41815-N-DN-** (WITHOUT RAMP)



- NOTES:
 1. MATERIAL: HOUSING: POLYESTER, RATED UL 94V-0. COLOR: NATURAL (WHITE)
 2. FINISH:
 (197) = OVERALL REFLOWED MATTE TIN: 0.00152/0.00060 MIN OVER 0.00127/0.00050 MIN NICKEL.
 (208) = SELECT GOLD: 0.00038/0.00015 MIN. SELECT TIN: 0.00254/0.00100 MIN. OVERALL NICKEL UNDERPLATE: 0.00127/0.00050 MIN.
 (228) = SELECT GOLD: 0.00076/0.00030 MIN. SELECT TIN: 0.00254/0.00100 MIN. OVERALL NICKEL UNDERPLATE: 0.00127/0.00050 MIN.
 (909) = OVERALL TIN: 0.00254/0.00100 MIN.
 3. PRODUCT SPECIFICATION: PS-08-50
 4. PACKAGING: SEE CHARTS
 5. FOR TOP ENTRY AND RIGHT ANGLE ASSEMBLIES WITH LOWER INSERTION FORCE USE SINGLE BEAM CONTACT, (TERMINAL NO. 4244)
 6. SOLDERABILITY: WHEN PARTS ARE SOLDERED AT A TEMPERATURE OF 230°C (446°F) FOR 5 SECONDS EACH SOLDERED SURFACE SHALL BE A MINIMUM OF 95% COVERED WITH A SMOOTH CONTINUOUS ADHERENT COATING. FOR ADDITIONAL INFORMATION SEE SMES-152.
 7. PARTS ARE STACKABLE END TO END ON (3.96)/.156 CENTERLINE.
 8. THIS PART CONFORMS TO CLASS B REQUIREMENTS OF COSMETIC SPEC PS-45499-002.

TOP ENTRY

HOUSING: 41815-N-AN-** (WITH RAMP)
 HOUSING: 41815-N-DN-** (WITHOUT RAMP)



QUALITY SYMBOLS	GENERAL TOLERANCES (UNLESS SPECIFIED)		DIMENSION STYLE		SCALE	DESIGN UNITS	THIRD ANGLE PROJECTION
	mm	INCH	MM/IN	DATE			
∇=0	4 PLACES ±	±	SAMIEC	01/28/87	TITLE KK 156 HOUSING PCB 41815 SERIES	DOCUMENT NO. molex SDA-41815	SHEET NO. 1 OF *
∇=0	3 PLACES ±	±.010	CHECKED BY	DATE			
∇=0	2 PLACES ±	±.015	SAMIEC	01/28/87			
	1 PLACE ±	±	APPROVED BY	DATE			
	0 PLACE ±	±	LENZ	01/28/87			
ANGULAR ±1/2° DRAFT WHERE APPLICABLE MUST REMAIN WITHIN DIMENSIONS			MATERIAL NO. SEE CHART				
SIZE B THIS DRAWING CONTAINS INFORMATION THAT IS PROPRIETARY TO MOLEX INCORPORATED AND SHOULD NOT BE USED WITHOUT WRITTEN PERMISSION							