



Distributor of Molex Connector Corporation: Excellent Integrated System Limited
Datasheet of 0009482130 - Connector Receptacle 13 Position 0.156" (3.96mm) Tin Through
Hole, Right Angle

Contact us: sales@integrated-circuit.com Website: www.integrated-circuit.com

Excellent Integrated System Limited

Stocking Distributor

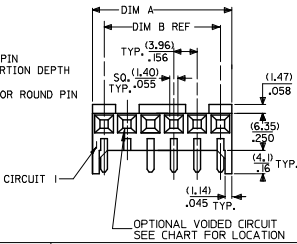
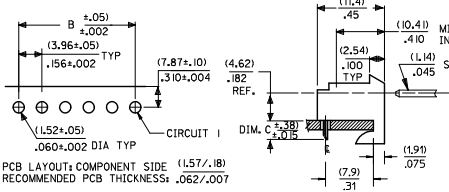
Click to view price, real time Inventory, Delivery & Lifecycle Information:

[Molex Connector Corporation](#)
[0009482130](#)

For any questions, you can email us directly:
sales@integrated-circuit.com

RIGHT ANGLE

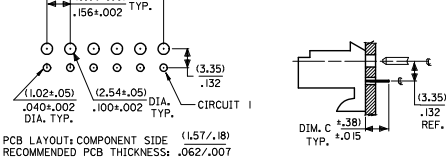
HOUSING: 41815-N-AN-*** (WITH RAMP)
 HOUSING: 41815-N-DN-*** (WITHOUT RAMP)



DIM. B	DIM. A	NO. OF CKTS
(3.96)	(13.02±.25)	2
.156	(.08±.010)	2
(7.92)	(11.79±.25)	3
.312	(.46±.010)	3
(11.89)	(15.15±.25)	4
.468	(.620±.010)	4
(15.85)	(19.71±.25)	5
.624	(.775±.010)	5
(19.81)	(23.67±.25)	6
.780	(.932±.010)	6
(23.77)	(27.64±.30)	7
.936	(1.088±.012)	7
(27.74)	(31.61±.25)	8
1.092	(1.244±.012)	8
(31.70)	(35.56±.30)	9
1.248	(1.400±.012)	9
(35.66)	(39.52±.30)	10
1.404	(1.556±.012)	10
(39.62)	(43.48±.30)	11
1.560	(1.712±.012)	11
(43.59)	(47.45±.30)	12
1.716	(1.868±.012)	12
(47.55)	(51.41±.30)	13
1.872	(2.024±.012)	13
(51.51)	(55.37±.36)	14
2.028	(2.180±.014)	14
(55.47)	(59.33±.36)	15
2.184	(2.336±.014)	15

BOTTOM ENTRY

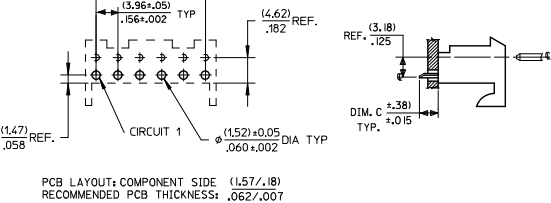
HOUSING: 41815-N-AN-*** (WITH RAMP)
 HOUSING: 41815-N-DN-*** (WITHOUT RAMP)



- NOTES:
 1. MATERIAL: HOUSING: POLYESTER, RATED UL 94V-0. COLOR: NATURAL (WHITE)
 2. FINISH:
 (197) = OVERALL REFLOWED MATTE TIN: 0.00152/.000060 MIN OVER 0.00127/.000050 MIN NICKEL.
 (208) = SELECT GOLD: 0.00038/.000015 MIN. SELECT TIN: 0.00254/.000100 MIN. OVERALL NICKEL UNDERPLATE: 0.00127/.000050 MIN. SELECT TIN: 0.00254/.000100 MIN.
 (228) = SELECT GOLD: 0.00076/.000030 MIN. SELECT TIN: 0.00254/.000100 MIN. OVERALL NICKEL UNDERPLATE: 0.00127/.000050 MIN.
 (909) = OVERALL TIN: 0.00254/.000100 MIN.
 3. PRODUCT SPECIFICATION: PS-08-50
 4. PACKAGING: SEE CHARTS
 5. FOR TOP ENTRY AND RIGHT ANGLE ASSEMBLIES WITH LOWER INSERTION FORCE USE SINGLE BEAM CONTACT, (TERMINAL NO. 4244)
 6. SOLDERABILITY: WHEN PARTS ARE SOLDERED AT A TEMPERATURE OF 230°C (446°F) FOR 5 SECONDS EACH SOLDERED SURFACE SHALL BE A MINIMUM OF 95% COVERED WITH A SMOOTH CONTINUOUS ADHERENT COATING. FOR ADDITIONAL INFORMATION SEE SMES-152.
 7. PARTS ARE STACKABLE END TO END ON (3.96)/.156 CENTERLINE.
 8. THIS PART CONFORMS TO CLASS B REQUIREMENTS OF COSMETIC SPEC PS-45499-002.

TOP ENTRY

HOUSING: 41815-N-AN-*** (WITH RAMP)
 HOUSING: 41815-N-DN-*** (WITHOUT RAMP)



QUALITY SYMBOLS	GENERAL TOLERANCES (UNLESS SPECIFIED)		DIMENSION STYLE		SCALE	DESIGN UNITS	THIRD ANGLE PROJECTION
	mm	INCH	MM/IN	MM/IN			
$\sqrt{\text{A}}=0$	4 PLACES ±	±	DRAWN BY SAMIEC	DATE 01/28/87	TITLE KK 156 HOUSING PCB 41815 SERIES		SHEET NO. 1 OF *
$\sqrt{\text{B}}=0$	3 PLACES ±	±.010	CHECKED BY SAMIEC	DATE 01/28/87			
$\sqrt{\text{C}}=0$	2 PLACES ±	±.015	APPROVED BY LENZ	DATE 01/28/87			
$\sqrt{\text{D}}=0$	1 PLACE ±	±	MATERIAL NO. SEE CHART	DOCUMENT NO. SDA-41815			
DRAFT WHERE APPLICABLE MUST REMAIN WITHIN DIMENSIONS THIS DRAWING CONTAINS INFORMATION THAT IS PROPRIETARY TO MOLEX INCORPORATED AND SHOULD NOT BE USED WITHOUT WRITTEN PERMISSION							