



**Distributor of Molex Connector Corporation: Excellent Integrated System Limited**  
Datasheet of 0009485136 - Connector Receptacle, Bottom Entry 13 Position 0.156" (3.96mm)  
Gold Through Hole

Contact us: [sales@integrated-circuit.com](mailto:sales@integrated-circuit.com) Website: [www.integrated-circuit.com](http://www.integrated-circuit.com)

---

## **Excellent Integrated System Limited**

Stocking Distributor

Click to view price, real time Inventory, Delivery & Lifecycle Information:

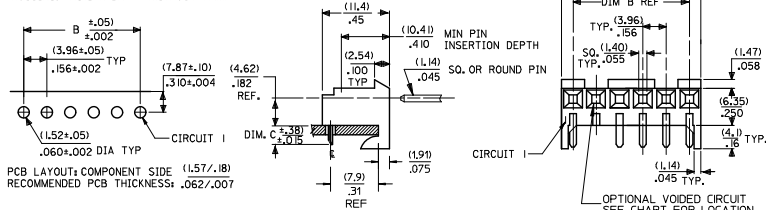
[Molex Connector Corporation](#)  
[0009485136](#)

For any questions, you can email us directly:  
[sales@integrated-circuit.com](mailto:sales@integrated-circuit.com)

Contact us: [sales@integrated-circuit.com](mailto:sales@integrated-circuit.com) Website: [www.integrated-circuit.com](http://www.integrated-circuit.com)

RIGHT ANGLE

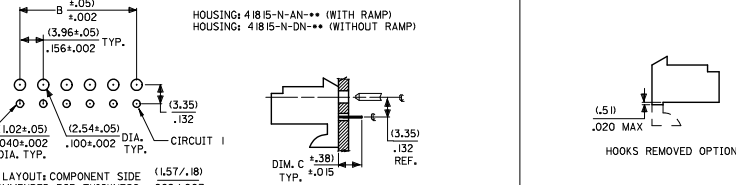
HOUSING: 41815-N-AN-\*\*-\*(WITH RAMP)  
 HOUSING: 41815-N-DN-\*\*-\*(WITHOUT RAMP)



DIM. B	DIM. A	NO. OF CKTS
(3.96)	(3.02±.25)	2
.156	.408±.010	2
(7.92)	(1.179±.25)	3
.312	.464±.010	3
(11.89)	(1.575±.25)	4
.468	.620±.010	4
(15.85)	(1.971±.25)	5
.624	.776±.010	5
(19.81)	(2.367±.25)	6
.780	.832±.010	6
(23.77)	(2.764±.30)	7
.936	1.088±.012	7
(27.74)	(3.161±.30)	8
1.092	1.244±.012	8
(31.70)	(3.558±.30)	9
1.248	1.400±.012	9
(35.66)	(3.952±.30)	10
1.404	1.556±.012	10
(39.62)	(4.348±.30)	11
1.560	1.712±.012	11
(43.59)	(4.745±.30)	12
1.716	1.868±.012	12
(47.55)	(5.141±.30)	13
1.872	2.024±.012	13
(51.51)	(5.537±.36)	14
2.028	2.180±.014	14
(55.47)	(5.933±.36)	15
2.184	2.336±.014	15

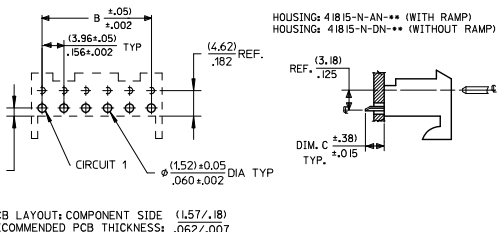
BOTTOM ENTRY

HOUSING: 41815-N-AN-\*\*-\*(WITH RAMP)  
 HOUSING: 41815-N-DN-\*\*-\*(WITHOUT RAMP)



TOP ENTRY

HOUSING: 41815-N-AN-\*\*-\*(WITH RAMP)  
 HOUSING: 41815-N-DN-\*\*-\*(WITHOUT RAMP)



NOTES:

1. MATERIAL: HOUSING: POLYESTER, RATED UL 94V-0. COLOR: NATURAL (WHITE)
2. FINISH:
  - (197) = OVERALL REFLOWED MATTE TIN: 0.00152/.000060 MIN OVER 0.00127/.000050 MIN NICKEL.
  - (208) = SELECT GOLD: 0.00038/.000015 MIN. SELECT TIN: 0.00254/.000100 MIN. OVERALL NICKEL UNDERPLATE: 0.00127/.000050 MIN.
  - (228) = SELECT GOLD: 0.00076/.000030 MIN. SELECT TIN: 0.00254/.000100 MIN. OVERALL NICKEL UNDERPLATE: 0.00127/.000050 MIN.
  - (909) = OVERALL TIN: 0.00254/.000100 MIN.
3. PRODUCT SPECIFICATION: PS-08-50
4. PACKAGING: SEE CHARTS
5. FOR TOP ENTRY AND RIGHT ANGLE ASSEMBLIES WITH LOWER INSERTION FORCE USE SINGLE BEAM CONTACT, (TERMINAL NO. 4244)
6. SOLDERABILITY: WHEN PARTS ARE SOLDERED AT A TEMPERATURE OF 230°C (446°F) FOR 5 SECONDS EACH SOLDERED SURFACE SHALL BE A MINIMUM OF 95% COVERED WITH A SMOOTH CONTINUOUS ADHERENT COATING. FOR ADDITIONAL INFORMATION SEE SMES-152.
7. PARTS ARE STACKABLE END TO END ON (3.96)/.156 CENTERLINE.
8. THIS PART CONFORMS TO CLASS B REQUIREMENTS OF COSMETIC SPEC PS-45499-002.

ADD: 41815-0687 EC NO: UCP2015-1957 DR: NIK/PPER 2014/09/30 CH: KONGNUTEN 2014/09/30 APPR: STH/TH 2014/10/23 AN3 REV	QUALITY SYMBOLS	GENERAL TOLERANCES (UNLESS SPECIFIED) <table border="1"> <thead> <tr> <th></th> <th>mm</th> <th>INCH</th> </tr> </thead> <tbody> <tr> <td>4 PLACES</td> <td>± .010</td> <td>± .0004</td> </tr> <tr> <td>3 PLACES</td> <td>± .025</td> <td>± .0010</td> </tr> <tr> <td>2 PLACES</td> <td>± 0.25</td> <td>± .010</td> </tr> <tr> <td>1 PLACE</td> <td>± 0.38</td> <td>± .015</td> </tr> <tr> <td>0 PLACE</td> <td>±</td> <td>±</td> </tr> </tbody> </table>		mm	INCH	4 PLACES	± .010	± .0004	3 PLACES	± .025	± .0010	2 PLACES	± 0.25	± .010	1 PLACE	± 0.38	± .015	0 PLACE	±	±	DIMENSION STYLE	SCALE	DESIGN UNITS	THIRD ANGLE PROJECTION
			mm	INCH																				
	4 PLACES		± .010	± .0004																				
	3 PLACES		± .025	± .0010																				
2 PLACES	± 0.25	± .010																						
1 PLACE	± 0.38	± .015																						
0 PLACE	±	±																						
	MM/IN	---	INCH																					
		DRAWN BY	DATE	TITLE																				
		CHECKED BY	DATE	KK 156 HOUSING PCB 41815 SERIES																				
		APPROVED BY	DATE																					
		LENZ	01/28/87																					
		MATERIAL NO.	DOCUMENT NO.	SDA-41815	SHEET NO. 1 OF *																			
		SEE CHART		THIS DRAWING CONTAINS INFORMATION THAT IS PROPRIETARY TO MOLEX INCORPORATED AND SHOULD NOT BE USED WITHOUT WRITTEN PERMISSION																				