



Distributor of Molex Connector Corporation: Excellent Integrated System Limited
Datasheet of 0009485155 - Connector Receptacle 15 Position 0.156" (3.96mm) Gold Through Hole

Contact us: sales@integrated-circuit.com Website: www.integrated-circuit.com

Excellent Integrated System Limited

Stocking Distributor

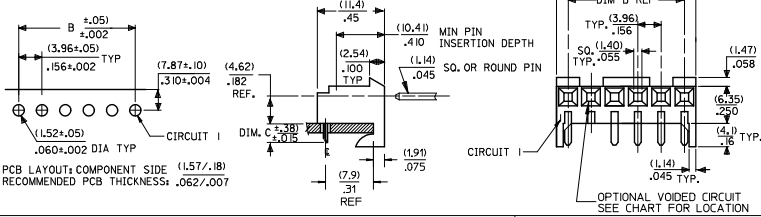
Click to view price, real time Inventory, Delivery & Lifecycle Information:

[Molex Connector Corporation](#)
[0009485155](#)

For any questions, you can email us directly:
sales@integrated-circuit.com

RIGHT ANGLE

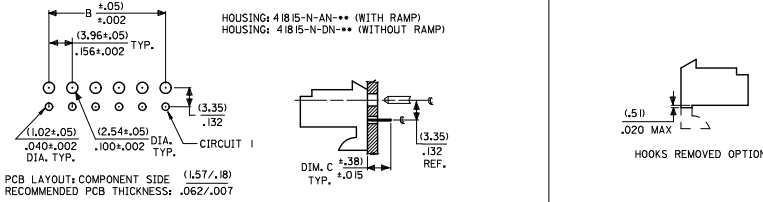
HOUSING: 41815-N-AN-**-*(WITH RAMP)
 HOUSING: 41815-N-DN-**-*(WITHOUT RAMP)



DIM. B	DIM. A	NO. OF CKTS
(3.96)	(1.02±.25)	2
.156	.408±0.010	2
(7.92)	(1.179±.25)	3
.312	.464±0.010	3
(11.89)	(1.15±.25)	4
.468	.620±0.010	4
(15.85)	(1.971±.25)	5
.624	.776±0.010	5
(19.81)	(2.347±.25)	6
.780	.932±0.010	6
(23.77)	(2.764±.30)	7
.936	1.088±0.012	7
(27.74)	(3.169±.25)	8
1.092	1.244±0.012	8
(31.70)	(3.556±.30)	9
1.248	1.400±0.012	9
(35.66)	(3.952±.30)	10
1.404	1.556±0.012	10
(39.62)	(4.348±.30)	11
1.560	1.712±0.012	11
(43.59)	(4.745±.30)	12
1.716	1.868±0.012	12
(47.55)	(5.141±.30)	13
1.872	2.024±0.012	13
(51.51)	(5.537±.36)	14
2.028	2.180±0.014	14
(55.47)	(5.933±.36)	15
2.184	2.336±0.014	15

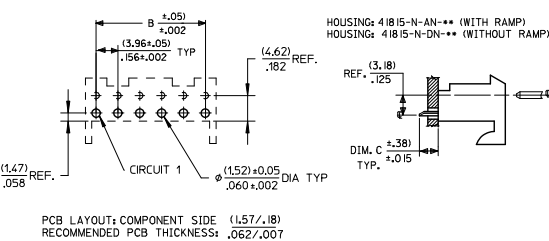
BOTTOM ENTRY

HOUSING: 41815-N-AN-**-*(WITH RAMP)
 HOUSING: 41815-N-DN-**-*(WITHOUT RAMP)



TOP ENTRY

HOUSING: 41815-N-AN-**-*(WITH RAMP)
 HOUSING: 41815-N-DN-**-*(WITHOUT RAMP)



NOTES:

- MATERIAL: HOUSING: POLYESTER, RATED UL 94V-0. COLOR: NATURAL (WHITE)
- FINISH:
 - (197) = OVERALL REFLOWED MATTE TIN: 0.00152/.000060 MIN OVER 0.00127/.000050 MIN NICKEL.
 - (208) = SELECT GOLD: 0.00038/.000015 MIN. SELECT TIN: 0.00254/.000100 MIN. OVERALL NICKEL UNDERPLATE: 0.00127/.000050 MIN.
 - (228) = SELECT GOLD: 0.00076/.000030 MIN. SELECT TIN: 0.00254/.000100 MIN. OVERALL NICKEL UNDERPLATE: 0.00127/.000050 MIN.
- PRODUCT SPECIFICATION: PS-08-50
- PACKAGING: SEE CHARTS
- FOR TOP ENTRY AND RIGHT ANGLE ASSEMBLIES WITH LOWER INSERTION FORCE USE SINGLE BEAM CONTACT, (TERMINAL NO. 4244)
- SOLDERABILITY: WHEN PARTS ARE SOLDERED AT A TEMPERATURE OF 230°C (446°F) FOR 5 SECONDS EACH SOLDERED SURFACE SHALL BE A MINIMUM OF 95% COVERED WITH A SMOOTH CONTINUOUS ADHERENT COATING. FOR ADDITIONAL INFORMATION SEE SMES-152.
- PARTS ARE STACKABLE END TO END ON (3.96)/.156 CENTERLINE.
- THIS PART CONFORMS TO CLASS B REQUIREMENTS OF COSMETIC SPEC PS-45499-002.

ADD 41815-0687 EC NO: UCP2015-9357 DRAWN BY: PPER CHKD BY: NGUYEN APPROV: SHTH	DESCRIPTION	QUALITY SYMBOLS	GENERAL TOLERANCES (UNLESS SPECIFIED)		DIMENSION STYLE		SCALE	DESIGN UNITS	THIRD ANGLE PROJECTION
			mm	INCH	MM/IN	INCH			
REV: AN3		$\sqrt{\text{R}}=0$ $\sqrt{\text{S}}=0$ $\sqrt{\text{P}}=0$	4 PLACES ± .010	± .010	SAMIEC	01/28/87	TITLE: KK 156 HOUSING PCB 41815 SERIES	molex	SHEET NO. 1 OF *
			3 PLACES ± .025	± .015	SAMIEC	01/28/87			
			2 PLACES ± 0.38	± .015	SAMIEC	01/28/87			
			1 PLACE ± .038	± .015	LENZ	01/28/87			
			0 PLACE ± .038	± .015	LENZ	01/28/87			
			ANGULAR ±1/2°		MATERIAL NO. SEE CHART		DOCUMENT NO. SDA-41815		
			DRAFT WHERE APPLICABLE MUST REMAIN WITHIN DIMENSIONS		SIZE B		THIS DRAWING CONTAINS INFORMATION THAT IS PROPRIETARY TO MOLEX INCORPORATED AND SHOULD NOT BE USED WITHOUT WRITTEN PERMISSION		