

## Excellent Integrated System Limited

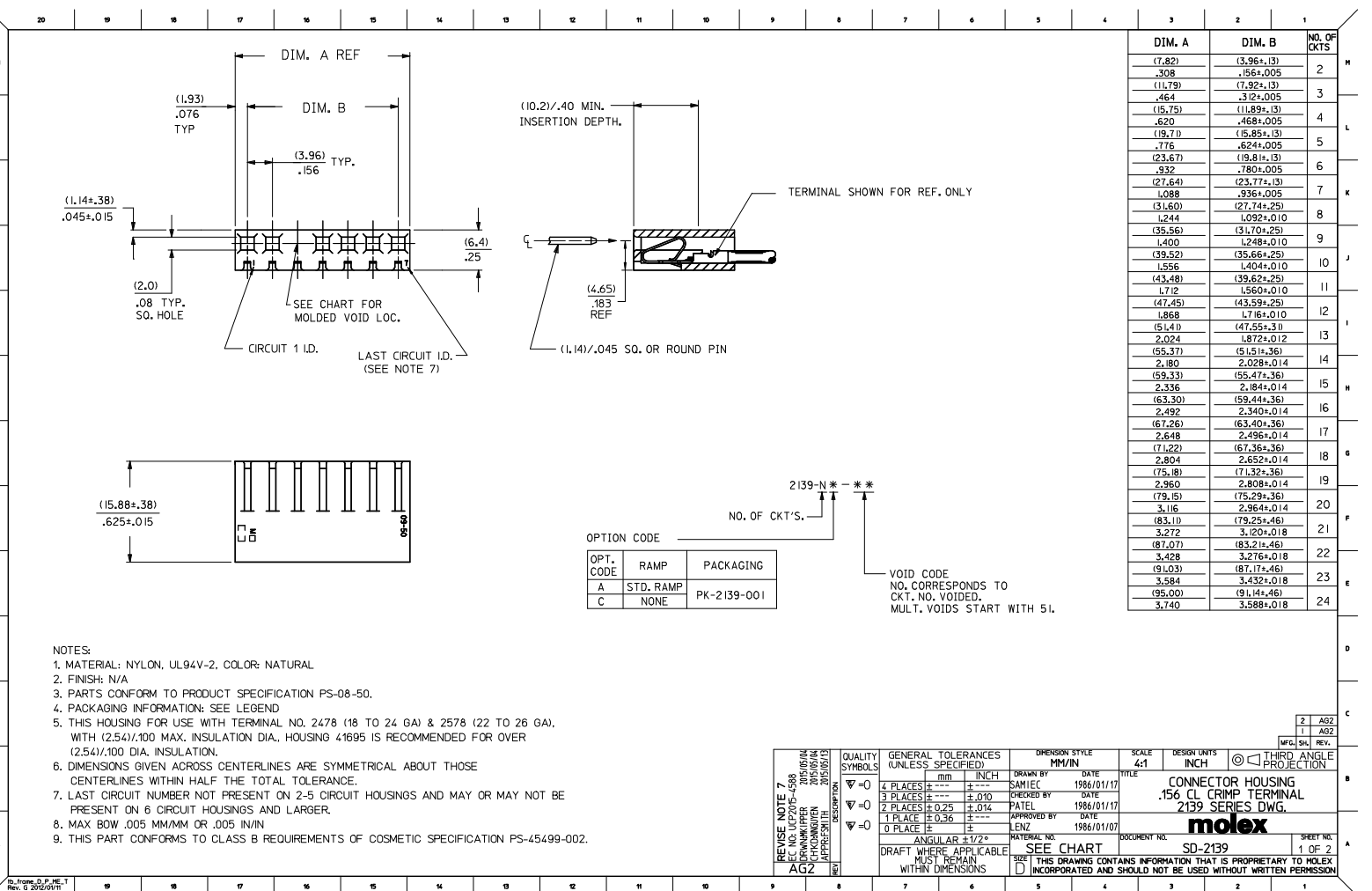
Stocking Distributor

Click to view price, real time Inventory, Delivery & Lifecycle Information:

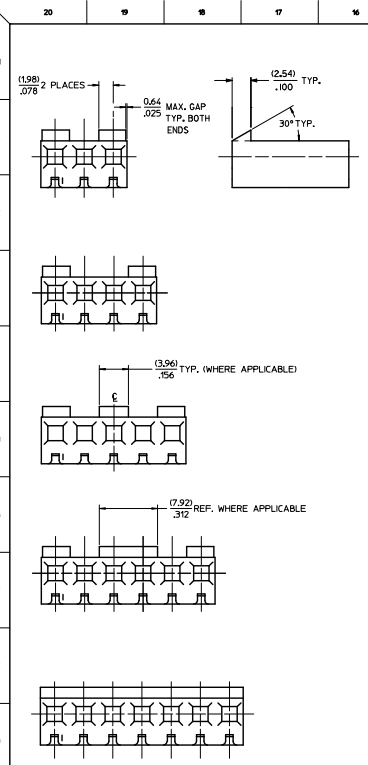
[Molex Connector Corporation](#)  
[0009507107](#)

For any questions, you can email us directly:

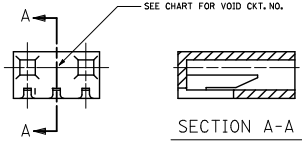
[sales@integrated-circuit.com](mailto:sales@integrated-circuit.com)



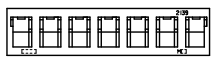
QUALITY SYMBOLS	GENERAL TOLERANCES (UNLESS SPECIFIED)	DRAWN BY	DATE	SCALE	DESIGN UNITS	THIRD ANGLE PROJECTION
▽=0	mm INCH	SAMIEC	1986/01/17	4:1	INCH	THIRD ANGLE PROJECTION
▽=0	4 PLACES ±.010	CHECKED BY	DATE	TITLE		
▽=0	3 PLACES ±.025 ±.034	PATEL	1986/01/17	CONNECTOR HOUSING		
	2 PLACES ±.036	APPROVED BY	DATE	.156 CL CRIMP TERMINAL		
	1 PLACE ±.036	LENZ	1986/01/07	2139 SERIES DWG.		
	0 PLACE ±.036			molex		
	ANGULAR ±1/2°	MATERIAL NO.	DOCUMENT NO.	SHEET NO.		
	DRAFT WHERE APPLICABLE	SEE CHART	SD-2139	1 OF 2		
	MUST REMAIN WITHIN DIMENSIONS	THIS DRAWING CONTAINS INFORMATION THAT IS PROPRIETARY TO MOLEX INCORPORATED AND SHOULD NOT BE USED WITHOUT WRITTEN PERMISSION				



NO. OF CKT.'S.	STANDARD RAMP IS LOCATED ON € OF CKT. NOS.
2	ACROSS ENTIRE PART
3	1,3
4	1,4
5	1,3,5
6	1,3,4,6
7	ACROSS ENTIRE PART
8	1,3,6,8
9	ACROSS ENTIRE PART
10	1,3,5,6,8,10
11	ACROSS ENTIRE PART
12	1,3,5,8,10,12
13	1,3,5,7,9,11,13
14	1,3,5,7,8,10,12,14
15	1,3,5,7,9,11,13,15
16	1,3,5,7,10,12,14,16
17	1,3,5,7,9,11,13,15,17
18	1,3,5,7,9,10,12,14,16,18
19	1,3,5,7,9,11,13,15,17,19
20	1,3,5,7,9,12,14,16,18,20
21	1,3,5,7,9,11,13,15,17,19,21
22	1,3,5,7,9,11,12,14,16,18,20,22
23	1,3,5,7,9,11,13,15,17,19,21,23
24	1,3,5,7,9,11,14,16,18,20,22,24



MOLDED VOID OPTION



ALTERNATE ENGRAVING LOCATION

STD. RAMP OPTION  
SEE CHART FOR RAMP LOCATIONS.

2139-NA**			2139-NC**		
ORDER NO.	ENG. NO.	VOIDS	ORDER NO.	ENG. NO.	VOIDS
09-50-302	2139-2A		09-50-702	2139-2C	
09-50-303	2139-3A		09-50-703	2139-3C	
09-50-304	2139-4A		09-50-704	2139-4C	
09-50-305	2139-5A		09-50-705	2139-5C	
09-50-306	2139-6A		09-50-706	2139-6C	
09-50-307	2139-7A		09-50-707	2139-7C	
09-50-308	2139-8A		09-50-708	2139-8C	
09-50-309	2139-9A		09-50-709	2139-9C	
09-50-310	2139-10A		09-50-710	2139-10C	
09-50-311	2139-11A		09-50-711	2139-11C	
09-50-312	2139-12A		09-50-712	2139-12C	
09-50-313	2139-13A		09-50-713	2139-13C	
09-50-314	2139-14A		09-50-714	2139-14C	
09-50-315	2139-15A		09-50-715	2139-15C	
09-50-316	2139-16A		09-50-716	2139-16C	
09-50-317	2139-17A		09-50-717	2139-17C	
09-50-318	2139-18A		09-50-718	2139-18C	
09-50-319	2139-19A		09-50-719	2139-19C	
09-50-320	2139-20A		09-50-720	2139-20C	
09-50-321	2139-21A		09-50-721	2139-21C	
09-50-322	2139-22A		09-50-722	2139-22C	
09-50-323	2139-23A		09-50-723	2139-23C	
09-50-324	2139-24A		09-50-724	2139-24C	
09-50-3036	2139-3A-2	2	09-50-7117	2139-11C-51	2,7,10
	2139-10A-2	2	09-50-7166	2139-16C-2	2
	2139-10A-51	2,5	09-50-7106	2139-10C-2	2
	2139-7A-2	2	09-50-7107	2139-10C-51	2,5
	2139-11A-51	2,7,10	09-50-7076	2139-7C-2	2
09-50-3163	2139-16A-2	2		2139-16C-3	3
09-50-3073	2139-10A-7	7	09-50-7108	2139-10C-4	4
09-50-3083	2139-10A-8	8	09-50-7109	2139-10C-5	5
09-50-3104	2139-10A-9	9		2139-5C-2	2
09-50-3162	2139-16A-51	2,5	09-50-3077	2139-7C-3	3
09-50-3092	2139-9A-51	2,6	09-50-3078	2139-7C-5	5
09-50-3075	2139-7A-51	1,7	09-50-7142	2139-14C-5	5
	2139-7A-6	6			
09-50-3047	2139-5A-51	2,4			
	2139-4A-3	3			
09-50-3052	2139-11A-2	2			
09-50-3052	2139-5A-4	4			
09-50-3016	2139-7A-52	4,7			
09-50-3125	2139-12A-5	5			
	2139-7A-3	3			
	2139-7A-5	5			
09-50-3053	2139-9A-2	2			
	2139-9A-2	2			
09-50-3127	2139-12A-2	2			
09-50-3143	2139-14A-2	2			
09-50-3202	2139-20A-2	2			
	2139-9A-4	4			
09-50-3126	2139-12A-11	11			
09-50-3142	2139-14A-13	13			
09-50-3084	2139-8A-4	4			
09-50-3037	2139-3A-3	3			
09-50-3182	2139-18A-2	2			
09-50-3157	2139-15A-2	2			

SEE SHEET 1 EC NO. 007205-4588 DRAWN BY: J.P.P. 20/05/04 CHECKED BY: J.P.P. 20/05/04 APPROVED BY: J.P.P. 20/05/04 AGZ	QUALITY SYMBOLS ∇=0 ∇=0 ∇=0	GENERAL TOLERANCES (UNLESS SPECIFIED) mm INCH 4 PLACES ±.010 ±.000 3 PLACES ±.010 ±.000 2 PLACES ±0.25 ±.014 1 PLACE ±0.36 ±.014 0 PLACE ±.014 ±.000 ANGULAR ±1/2°	DIMENSION STYLE MM/IN DRAWN BY: SAMIEC CHECKED BY: PATTEL APPROVED BY: LENZ DATE: 1986/01/17 DATE: 1986/01/17 DATE: 1986/01/17	SCALE 4:1	DESIGN UNITS INCH	THIRD ANGLE PROJECTION	CONNECTOR HOUSING FOR CRIMP TERMINAL 2139 SERIES DWG.	MATERIAL NO. SEE CHART	DOCUMENT NO. SD-2139	SHEET NO. 2 OF 2
	DRAFT WHERE APPLICABLE MUST REMAIN WITHIN DIMENSIONS									
	THIS DRAWING CONTAINS INFORMATION THAT IS PROPRIETARY TO MOLEX INCORPORATED AND SHOULD NOT BE USED WITHOUT WRITTEN PERMISSION									
	MOLEX									