



Distributor of Molex Connector Corporation: Excellent Integrated System Limited
Datasheet of 0009522078 - Connector Receptacle, Bottom Entry 7 Position 0.156" (3.96mm)
Tin Through Hole

Contact us: sales@integrated-circuit.com Website: www.integrated-circuit.com

Excellent Integrated System Limited

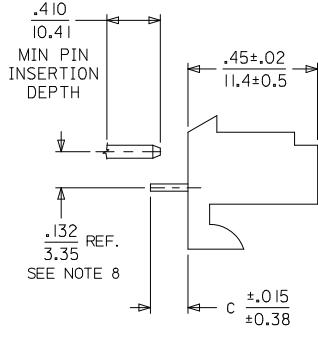
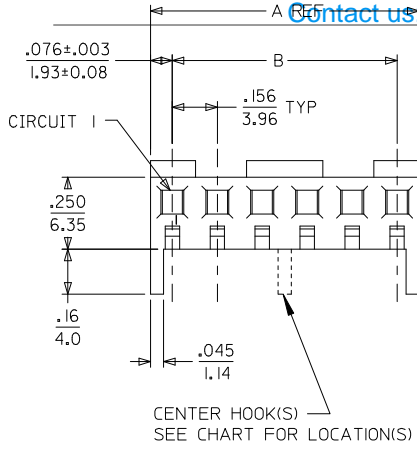
Stocking Distributor

Click to view price, real time Inventory, Delivery & Lifecycle Information:

[Molex Connector Corporation](#)
[0009522078](#)

For any questions, you can email us directly:
sales@integrated-circuit.com

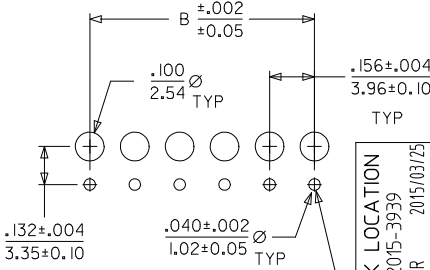
Contact us: sales@integrated-circuit.com Website: www.integrated-circuit.com



NOTES:

- HOUSING MATERIAL: NYLON, UL 94V-2
- FINISH:
 - (909) = OVERALL HOT TIN DIP: .000100/0.00254 MIN.
 - (197) OVERALL REFLOWED MATTE TIN: 0.00152/.000060 MIN. OVER 0.00127/.000050 MIN. NICKEL OVERALL.
 - (154) = OVERALL TIN: .000100/0.00254 MIN. OVERALL NICKEL UNDERPLATE: .000050/0.00127 MIN.
 - (208) = SELECT GOLD: .000015/0.00038 MIN. SELECT TIN: .000100/0.00254 MIN. OVERALL NICKEL UNDERPLATE: .000050/0.00127 MIN.
- PRODUCT SPECIFICATION: PS-08-50
- PACKAGING INFORMATION: SEE CHARTS.
- SOLDERABILITY SPECIFICATION: SMES-152
- RIGHT ANGLE OPTIONS: SEE DRAWING SDA-2145-001.
- TOP ENTRY OPTIONS: SEE DRAWING SDA-2145-002.
- .132/3.35 DIMENSION IS CENTER OF TERMINAL TO CENTER OF MATING PIN AND DOES NOT REFLECT CENTER OF THE CONNECTOR HOUSING WINDOW DIMENSION.
- THIS PART CONFORMS TO CLASS B REQUIREMENTS OF COSMETIC SPECIFICATION PS-45499-002.

| CKT. | A | B | CENTER HOOK(S) LOCATED BETWEEN CIRCUITS |
|------|----------------|--------------------------|---|
| 02 | .308 7.82 | .156±.005 3.96±0.13 | NONE |
| 03 | .464 11.79 | .312±.005 7.92±0.13 | NONE |
| 04 | .620 15.75 | .468±.005 11.89±0.13 | NONE |
| 05 | .776 19.71 | .624±.005 15.85±0.13 | NONE |
| 06 | .932 23.67 | .780±.005 19.81±0.13 | NONE |
| 07 | 1.088 27.64 | .936±.010 23.77±0.25 | NONE |
| 08 | 1.244 31.60 | 1.092±.010 27.74±0.25 | 4 & 5 |
| 09 | 1.400 35.56 | 1.248±.010 31.70±0.25 | 4 & 5 |
| 10 | 1.556 39.52 | 1.404±.010 35.66±0.25 | 5 & 6 |
| 11 | 1.712 43.48 | 1.560±.010 39.62±0.25 | 5 & 6 |
| 12 | 1.868 47.45 | 1.716±.010 43.59±0.25 | 4 & 5, 8 & 9 |
| 13 | 2.024 51.41 | 1.872±.010 47.55±0.25 | 6 & 7, 11 & 12 |
| 14 | 2.180 55.37 | 2.028±.014 51.51±0.36 | 5 & 6, 9 & 10 |
| 15 | 2.336 59.33 | 2.184±.014 55.47±0.36 | 5 & 6, 10 & 11 |



PCB LAYOUT: COMPONENT SIDE
 RECOMMENDED PCB THICKNESS .062/1.57

| ADD HOOK LOCATION | DESCRIPTION |
|---------------------|-------------|
| EC NO: UCP2015-3939 | |
| DRWN:KIPPER | 2015/03/25 |
| CHKD:ANGUYEN | 2015/03/25 |
| APPR:FSMLTH | 2015/03/27 |
| REV | |
| Z1 | |

| QUALITY SYMBOLS |
|-----------------|
| ▽=0 |
| ▽=0 |
| ▽=0 |

| GENERAL TOLERANCES (UNLESS SPECIFIED) | |
|--|-------|
| | INCH |
| 4 PLACES | ±.010 |
| 3 PLACES | ±.010 |
| 2 PLACES | ±.014 |
| 1 PLACE | ±.036 |
| 0 PLACE | ± |
| ANGULAR ±1/2° | |
| DRAFT WHERE APPLICABLE MUST REMAIN WITHIN DIMENSIONS | |

| DIMENSION STYLE IN/MM | |
|-----------------------|-----------|
| DRAWN BY | DATE |
| SAMIEC | 01/16/03 |
| CHECKED BY | DATE |
| SAMIEC | 01/16/03 |
| APPROVED BY | DATE |
| MARGULIS | 01/16/03 |
| MATERIAL NO. | SEE CHART |

| SCALE | DESIGN UNITS | THIRD ANGLE PROJECTION |
|---|--------------|------------------------|
| --- | INCH | ⊙ |
| TITLE | | SHT. REV. |
| KK 156 HOUSING ASSY PC TAIL BOTTOM ENTRY | | Z1 |
| molex | | |
| DOCUMENT NO. | SHEET NO. | |
| SDA-2145-003 | 1 OF 4 | |
| THIS DRAWING CONTAINS INFORMATION THAT IS PROPRIETARY TO MOLEX INCORPORATED AND SHOULD NOT BE USED WITHOUT WRITTEN PERMISSION | | |