

Excellent Integrated System Limited

Stocking Distributor

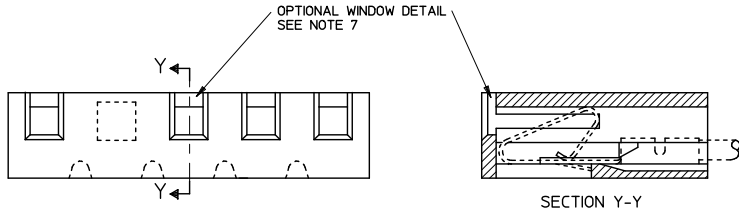
Click to view price, real time Inventory, Delivery & Lifecycle Information:

[Molex Connector Corporation](#)

[0010011114](#)

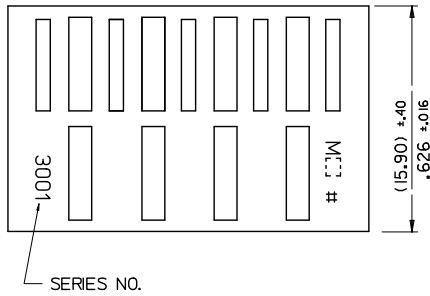
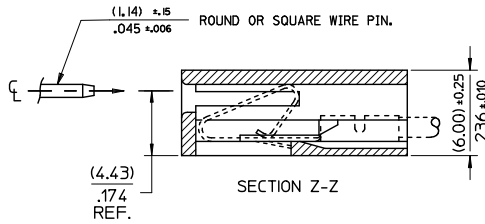
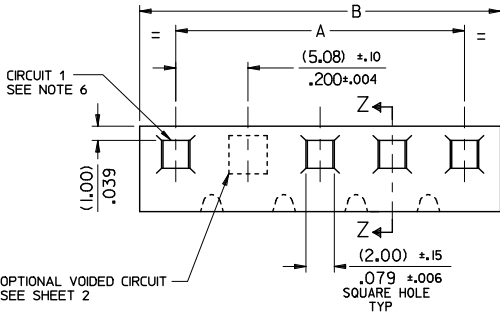
For any questions, you can email us directly:

sales@integrated-circuit.com



NOTES:

1. MATERIAL: NYLON, UL94V-2, COLOR: NATURAL
2. FINISH: N/A
3. PRODUCT SPECIFICATION: PS-99020-0087
4. THIS HOUSING USES KK TERMINAL SERIES 2478, 2578, AND 2878.
5. THIS PART CONFORMS TO CLASS B REQUIREMENTS OF COSMETIC SPECIFICATION PS-45499-002.
6. CIRCUIT 1 USED TO DEFINE VOID LOCATION.
7. WINDOW GEOMETRY IS DEPENDENT ON MOLD. PARTS MAY HAVE EITHER GEOMETRY.



10-01-1124	E-3001-12	2,200 ±.010	2,400 ±.012	55.88 ±.25	60.96 ±.25
-1114	-11	2,000 ±.008	2,200 ±.012	50.80 ±.20	55.88 ±.25
-1104	-10	1,800 ±.008	2,000 ±.012	45.72 ±.20	50.80 ±.25
-1094	-9	1,600 ±.008	1,800 ±.012	40.64 ±.20	45.72 ±.25
-1084	-8	1,400 ±.008	1,600 ±.012	35.56 ±.20	40.64 ±.25
-1074	-7	1,200 ±.008	1,400 ±.012	30.48 ±.20	35.56 ±.25
-1064	-6	1,000 ±.004	1,200 ±.012	25.40 ±.10	30.48 ±.25
-1054	-5	.800 ±.004	1,000 ±.012	20.32 ±.10	25.40 ±.25
-1044	-4	.600 ±.004	.800 ±.012	15.24 ±.10	20.32 ±.25
-1034	-3	.400 ±.004	.600 ±.012	10.16 ±.10	15.24 ±.25
10-01-1024	E-3001-2	.200 ±.004	.400 ±.012	5.08 ±.10	10.16 ±.25
PART No.		ENG. No.		A B	
				ENGLISH METRIC	

REMOVE 114 DIM. EC. NO. UCP2015-4130 DRAWN/KUPPER 2015/04/07 CHKD:JBELL 2015/04/08 APPR:FSMITH 2015/04/09	DESCRIPTION	QUALITY SYMBOLS	GENERAL TOLERANCES (UNLESS SPECIFIED)		DIMENSION STYLE		SCALE	DESIGN UNITS	THIRD ANGLE PROJECTION													
		$\nabla=0$ $\nabla=0$ $\nabla=0$	<table border="1"> <tr> <th></th> <th>mm</th> <th>INCH</th> </tr> <tr> <td>4 PLACES</td> <td>±.005</td> <td>±.002</td> </tr> <tr> <td>3 PLACES</td> <td>±.010</td> <td>±.004</td> </tr> <tr> <td>2 PLACES</td> <td>±.025</td> <td>±.010</td> </tr> <tr> <td>1 PLACE</td> <td>±.035</td> <td>±.014</td> </tr> <tr> <td>0 PLACE</td> <td>±.050</td> <td>±.020</td> </tr> </table>		mm	INCH	4 PLACES	±.005		±.002	3 PLACES	±.010	±.004	2 PLACES	±.025	±.010	1 PLACE	±.035	±.014	0 PLACE	±.050	±.020
	mm	INCH																				
4 PLACES	±.005	±.002																				
3 PLACES	±.010	±.004																				
2 PLACES	±.025	±.010																				
1 PLACE	±.035	±.014																				
0 PLACE	±.050	±.020																				
R2	REV	ANGULAR ±1/2°	DRAFT WHERE APPLICABLE MUST REMAIN WITHIN DIMENSIONS		DRAWN BY P. MOORE DATE 1998/09/15		TITLE	KK (5.08)/200 CRIMP TERMINAL HOUSING														
			SEE CHART		APPROVED BY MGOONEY DATE 1999/03/12		DOCUMENT NO. SDE-3001-N-*		SHEET NO. 1 OF 1													
			THIS DRAWING CONTAINS INFORMATION THAT IS PROPRIETARY TO MOLEX INCORPORATED AND SHOULD NOT BE USED WITHOUT WRITTEN PERMISSION		APPROVED BY FSMITH DATE 2010/12/06																	