

Excellent Integrated System Limited

Stocking Distributor

Click to view price, real time Inventory, Delivery & Lifecycle Information:

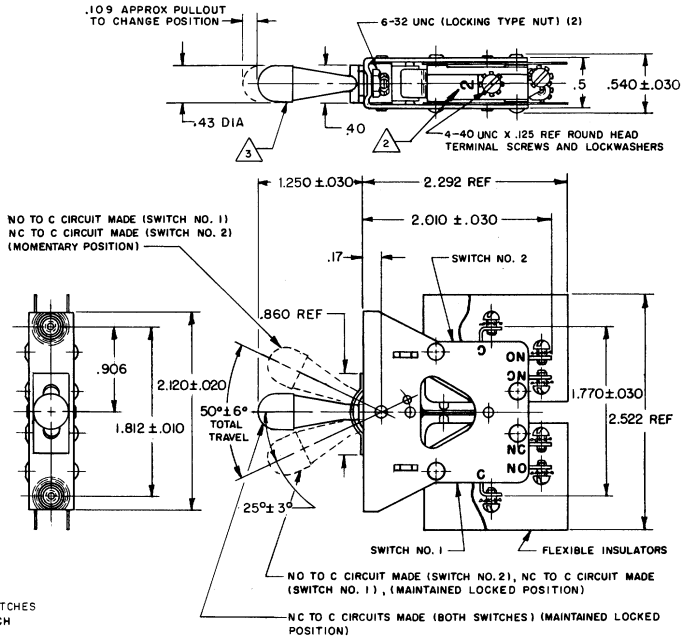
[Honeywell Sensing and Productivity Solutions
111AT25](#)

For any questions, you can email us directly:

sales@integrated-circuit.com

FO-55111-A
 HONEYWELL
 PART NUMBER
 111AT25
 FAA-PMA

| REV | DOCUMENT | CHANGED BY | CHECK |
|-----|----------|------------|-------|
| 13 | 0007018 | KR 12AUG04 | AK |



- NOTES
 1 - UNIT INCLUDES CATALOG LISTING V3-201 BASIC SWITCHES
 2 - BASIC SWITCH NO. MARKED ON EACH BASIC SWITCH
 3 - FLAT WHITE RESILIENT SILICONE RUBBER (50 DUROMETER APPROX)
 4 - FOR MANUFACTURING DETAIL SEE ASSEMBLY DRAWING 111AT25 FOR FAA-PMA

| ELECTRICAL DATA | |
|---|--|
| CONTACT ARRANGEMENT S P D T (2) | |
| 15A - 1/3 HP - 125 OR 250 VAC 1/2 A - 125 VDC; 1/4 A - 250 VDC | |

| DESIGN UNITS: INCH | |
|--------------------------|---------|
| TOLERANCES UNLESS NOTED: | |
| NO PLACE | X ± |
| ONE PLACE | .X ± |
| TWO PLACE | .XX ± |
| THREE PLACE | .XXX ± |
| FOUR PLACE | .XXXX ± |
| ANGLES | ± |
| THIRD ANGLE PROJECTION | |

| | | |
|--|-----|---------|
| DRAWN | MBF | 10MAR66 |
| CHECK | LSD | 11MAR66 |
| THIS DRAWING COVERS A PROPRIETARY ITEM AND IS THE PROPERTY OF HONEYWELL. THIS DRAWING IS NOT TO BE COPIED OR USED WITHOUT THE PERMISSION OF HONEYWELL. | | |
| INTERPRET PER ASME Y14.5M-1994 OTHER HONEYWELL ENGINEERING STANDARDS MAY APPLY | | |
| RASTER | | |

| Honeywell | | | |
|-----------------------------------|------|--------------|-----|
| TITLE ASSEMBLY - TOGGLE SWITCH | | | |
| SIZE | TYPE | DRAWING NAME | REV |
| B | I | 111AT25 | 13 |
| SCALE 1:1 | | SHEET 1 OF 1 | |