

## Excellent Integrated System Limited

Stocking Distributor

Click to view price, real time Inventory, Delivery & Lifecycle Information:

[Honeywell Sensing and Productivity Solutions  
151ML10](#)

For any questions, you can email us directly:

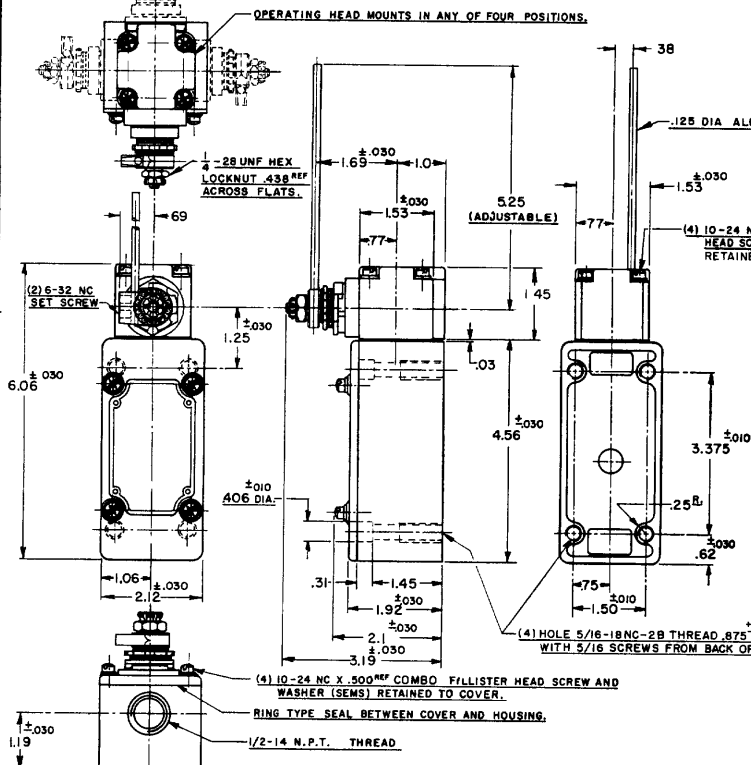
[sales@integrated-circuit.com](mailto:sales@integrated-circuit.com)

**MICRO SWITCH**  
A DIVISION OF HONEYWELL ELECTRIC COMPANY  
 MILWAUKEE, WISCONSIN  
**FED. MFR CODE 91929**

SWITCH-ENCLOSED

CATALOG LISTING  
**151ML10**

THIS DRAWING COVERS A PROPRIETARY ITEM AND IS THE PROPERTY OF MICRO SWITCH, A DIVISION OF HONEYWELL. THIS DRAWING IS NOT TO BE COPIED OR USED WITHOUT THE APPROVAL OF MICRO SWITCH.



**NOTES**

- 1 - IT IS ESSENTIAL TO PREVENT ENTRANCE OF HARMFUL AGENTS THRU THE CONDUIT OPENING TO OBTAIN THE FULL BENEFIT OF THE SEALED CONSTRUCTION PROVIDED IN THIS UNIT
- 2 - SWITCH IS ASSEMBLED FOR ACTUATION IN CLOCKWISE DIRECTION ONLY TO CONVERT SWITCH FOR ACTUATION IN THE COUNTER-CLOCKWISE DIRECTION ONLY, REMOVE THE HEAD AND SLIDE THE CAM TOWARD THE REAR OF THE HEAD SUFFICIENTLY TO DISENGAGE FROM THE FLATS ON THE SHAFT. ROTATE THE CAM 180° AND RE-ENGAGE THE CAM WITH THE FLATS ON THE SHAFT
- 3 - LEVER MAY BE POSITIVELY LOCKED AT INTERVALS OF APPROX 0.4° (870 POSITIONS) BY POSITIONING LEVER AND ROTATING SPACER TO MATCH TEETH
- 4 - LEVER MAY BE ADJUSTED TO ACTUATE THE SWITCH IN THE CLOCKWISE DIRECTION ONLY OR THE COUNTER-CLOCKWISE DIRECTION ONLY

(4) HOLE 5/16-18NC-28 THREAD .875<sup>+188</sup> DEEP. SWITCH MAY BE MOUNTED WITH 5/16 SCREWS FROM BACK OR 1/4 CAP SCREWS FROM THE FRONT.

151ML10  
 DRAWING NUMBER  
 ISSUE 10  
 12  
 REVISIONS  
 A 10/22/64  
 B 12/15/64  
 C 03/05/65  
 D 06/15/65  
 E 08/15/65  
 F 10/15/65  
 G 12/15/65  
 H 03/15/66  
 I 06/15/66  
 J 08/15/66  
 K 10/15/66  
 L 12/15/66  
 M 03/15/67  
 N 06/15/67  
 O 08/15/67  
 P 10/15/67  
 Q 12/15/67  
 R 03/15/68  
 S 06/15/68  
 T 08/15/68  
 U 10/15/68  
 V 12/15/68  
 W 03/15/69  
 X 06/15/69  
 Y 08/15/69  
 Z 10/15/69  
 AA 12/15/69  
 AB 03/15/70  
 AC 06/15/70  
 AD 08/15/70  
 AE 10/15/70  
 AF 12/15/70  
 AG 03/15/71  
 AH 06/15/71  
 AI 08/15/71  
 AJ 10/15/71  
 AK 12/15/71  
 AL 03/15/72  
 AM 06/15/72  
 AN 08/15/72  
 AO 10/15/72  
 AP 12/15/72  
 AQ 03/15/73  
 AR 06/15/73  
 AS 08/15/73  
 AT 10/15/73  
 AU 12/15/73  
 AV 03/15/74  
 AW 06/15/74  
 AX 08/15/74  
 AY 10/15/74  
 AZ 12/15/74  
 BA 03/15/75  
 BB 06/15/75  
 BC 08/15/75  
 BD 10/15/75  
 BE 12/15/75  
 BF 03/15/76  
 BG 06/15/76  
 BH 08/15/76  
 BI 10/15/76  
 BJ 12/15/76  
 BK 03/15/77  
 BL 06/15/77  
 BM 08/15/77  
 BN 10/15/77  
 BO 12/15/77  
 BP 03/15/78  
 BQ 06/15/78  
 BR 08/15/78  
 BS 10/15/78  
 BT 12/15/78  
 BU 03/15/79  
 BV 06/15/79  
 BV 08/15/79  
 BV 10/15/79  
 BV 12/15/79  
 BV 03/15/80  
 BV 06/15/80  
 BV 08/15/80  
 BV 10/15/80  
 BV 12/15/80  
 BV 03/15/81  
 BV 06/15/81  
 BV 08/15/81  
 BV 10/15/81  
 BV 12/15/81  
 BV 03/15/82  
 BV 06/15/82  
 BV 08/15/82  
 BV 10/15/82  
 BV 12/15/82  
 BV 03/15/83  
 BV 06/15/83  
 BV 08/15/83  
 BV 10/15/83  
 BV 12/15/83  
 BV 03/15/84  
 BV 06/15/84  
 BV 08/15/84  
 BV 10/15/84  
 BV 12/15/84  
 BV 03/15/85  
 BV 06/15/85  
 BV 08/15/85  
 BV 10/15/85  
 BV 12/15/85  
 BV 03/15/86  
 BV 06/15/86  
 BV 08/15/86  
 BV 10/15/86  
 BV 12/15/86  
 BV 03/15/87  
 BV 06/15/87  
 BV 08/15/87  
 BV 10/15/87  
 BV 12/15/87  
 BV 03/15/88  
 BV 06/15/88  
 BV 08/15/88  
 BV 10/15/88  
 BV 12/15/88  
 BV 03/15/89  
 BV 06/15/89  
 BV 08/15/89  
 BV 10/15/89  
 BV 12/15/89  
 BV 03/15/90  
 BV 06/15/90  
 BV 08/15/90  
 BV 10/15/90  
 BV 12/15/90  
 BV 03/15/91  
 BV 06/15/91  
 BV 08/15/91  
 BV 10/15/91  
 BV 12/15/91  
 BV 03/15/92  
 BV 06/15/92  
 BV 08/15/92  
 BV 10/15/92  
 BV 12/15/92  
 BV 03/15/93  
 BV 06/15/93  
 BV 08/15/93  
 BV 10/15/93  
 BV 12/15/93  
 BV 03/15/94  
 BV 06/15/94  
 BV 08/15/94  
 BV 10/15/94  
 BV 12/15/94  
 BV 03/15/95  
 BV 06/15/95  
 BV 08/15/95  
 BV 10/15/95  
 BV 12/15/95  
 BV 03/15/96  
 BV 06/15/96  
 BV 08/15/96  
 BV 10/15/96  
 BV 12/15/96  
 BV 03/15/97  
 BV 06/15/97  
 BV 08/15/97  
 BV 10/15/97  
 BV 12/15/97  
 BV 03/15/98  
 BV 06/15/98  
 BV 08/15/98  
 BV 10/15/98  
 BV 12/15/98  
 BV 03/15/99  
 BV 06/15/99  
 BV 08/15/99  
 BV 10/15/99  
 BV 12/15/99  
 BV 03/15/00  
 BV 06/15/00  
 BV 08/15/00  
 BV 10/15/00  
 BV 12/15/00

CHARACTERISTICS		ELECTRICAL DATA		SCALE 1/2 TO 1	
OPERATING FORCE	5 OZ. MAX.	CONTACT ARRANGEMENT	BREAK DISTANCE	DO NOT SCALE PRINT	
FULL OVERTRAVEL FORCE	7 OZ. MAX.	TWO CIRCUIT DOUBLE THROW DOUBLE BREAK		UNLESS OTHERWISE SPECIFIED	
RELEASE FORCE	3/4 OZ. MIN.			DIMENSIONS ARE IN INCHES	
PRETRAVEL	15° MAX.	10A-120, 240, 480, OR 600 VAC		<b>TOLERANCES ARE:</b>	
DIFFERENTIAL TRAVEL	7° MAX.	1/2 HP-120 VAC, 1 HP-240 VAC		ONE PLACE (.01)	±.005
OVERTRAVEL	60° MIN.	0.4 A-115 VDC, 0.4 A-230 VDC		TWO PLACE (.001)	±.002
SWITCH-BASIC REPLACEMENT	1MNS	PILOT DUTY 600 VAC MAX		THREE PLACE (.000)	±.005
				APPROX	±
				WEIGHT	