

Excellent Integrated System Limited

Stocking Distributor

Click to view price, real time Inventory, Delivery & Lifecycle Information:

[Honeywell Sensing and Productivity Solutions](#)
[51ML10-E1](#)

For any questions, you can email us directly:

sales@integrated-circuit.com

MICRO SWITCH
 A DIVISION OF HONEYWELL INTERNATIONAL INCORPORATED
 MILWAUKEE, WISCONSIN
 FED. MFR. CODE 91929

SWITCH - ENCLOSED

CATALOG LISTING
51ML10-E1

THIS DRAWING COVERS A PROPRIETARY ITEM AND IS THE PROPERTY OF MICRO SWITCH, A DIVISION OF HONEYWELL. THIS DRAWING IS NOT TO BE COPIED OR USED WITHOUT THE APPROVAL OF MICRO SWITCH.

M

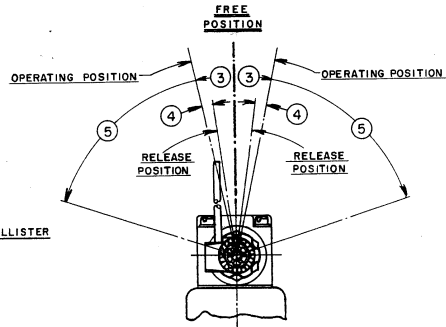
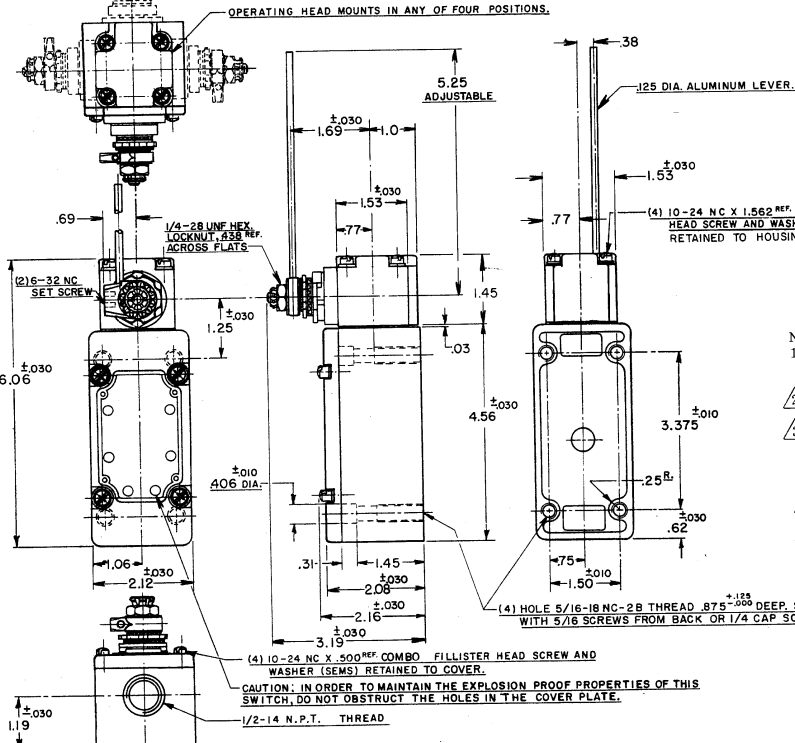
51ML10-E1
 DRAWING NUMBER
 RELEASE NO. SR-5069
 REPLACES

M
 DRAWING NUMBER
 ISSUE
 10/12

REVISONS

A	C052194
J	A P
26	SEPT 53
B	C0508367
J	A S
11	NOV 53
C	E050051-C
6	JAN 55
D	E0 63739
15	JUN 58
E	D074287
17	APR 63

74-983
 J A P 18 SEPT 83



- NOTES
- 1 - LISTED BY UNDERWRITERS LABORATORY, INC. FOR USE IN CLASS 1, GROUPS C AND D VAPOR-AIR ATMOSPHERE, AND CLASS 2, GROUPS E, F AND G DUST-AIR ATMOSPHERE SWITCH IS ASSEMBLED FOR ACTUATION IN CLOCKWISE DIRECTION ONLY
 - 2 - TO CONVERT SWITCH FOR ACTUATION IN THE COUNTER-CLOCKWISE DIRECTION ONLY, REMOVE THE HEAD AND SLIDE THE CAM TOWARD THE REAR OF THE HEAD SUFFICIENTLY TO DISENGAGE FROM THE FLATS ON THE SHAFT. ROTATE THE CAM 180° AND RE-ENGAGE THE CAM WITH THE FLATS ON THE SHAFT
 - 4 - LEVER MAY BE POSITIVELY LOCKED AT INTERVALS OF APPROX 0.4° (870 POSITIONS)
 - 5 - LEVER MAY BE ADJUSTED TO ACTUATE IN THE CLOCKWISE DIRECTION ONLY OR THE COUNTER-CLOCKWISE DIRECTION ONLY
 - 7 - IT IS ESSENTIAL THAT THE CONDUIT OPENING BE PROPERLY SEALED IN ORDER TO MAINTAIN THE EXPLOSION PROOF PROPERTIES

CHARACTERISTICS	ELECTRICAL DATA	SCALE 1/2 TO 1
OPERATING FORCE ----- 5 OZ. MAX.	CONTACT ARRANGEMENT	DO NOT SCALE PRINT
FULL OVERTRAVEL FORCE ----- 7 OZ. MAX.	S. P. D. T.	UNLESS OTHERWISE SPECIFIED
RELEASE FORCE ----- 3/4 OZ. MIN.		DIMENSIONS ARE IN INCHES
PRETRAVEL ----- ③ 1/2" MAX.	20A-120, 240 OR 480 VAC; 3/4 H.R.-120 VAC	TOLERANCES ARE:
DIFFERENTIAL TRAVEL ----- ④ 4° MAX.	1/2 H.R.-240 VAC; 1/2 A-115 VDC; 1/4 A-250 VDC	ONE PLACE (.05) ±.030
OVERTRAVEL ----- ⑤ 60° MIN.	PILOT DUTY 1720VA-HEAVY DUTY	TWO PLACE (.001) ±.015
SWITCH-BASIC REPLACEMENT -- IMK5	600 VAC MAX	THREE PLACE (.000) ±.008
	UL	ANGLES
		WEIGHT