

## **Excellent Integrated System Limited**

Stocking Distributor

Click to view price, real time Inventory, Delivery & Lifecycle Information:

[Texas Instruments](#)  
[CGS74LCT2524M](#)

For any questions, you can email us directly:

[sales@integrated-circuit.com](mailto:sales@integrated-circuit.com)

## CGS74LCT2524 1 to 4 Minimum Skew (300 ps) 3V Clock Driver

Check for Samples: [CGS74LCT2524](#)

### FEATURES

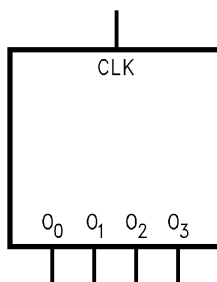
- Ideal for Low Power/Low Noise High Speed Applications
- Ensured:
  - 300 ps Pin-to-Pin Skew ( $t_{OSHL}$  and  $t_{OSLH}$ )
- Implemented on Texas Instruments' FACT<sup>®</sup> Family Process
- 1 Input to 4 Outputs Low Skew Clock Distribution
- Symmetric Output Current Drive: 12 mA  $I_{OH}/I_{OL}$
- Industrial Temperature of  $-40^{\circ}\text{C}$  to  $+85^{\circ}\text{C}$
- 8-Pin SOIC Package
- Low Dynamic Power Consumption Above 20 MHz
- Ensured 2 kV ESD Protection

### DESCRIPTION

This minimum skew clock driver is a 3V option of the current CGS74CT2524 Minimum Skew Clock Driver and is designed for Clock Generation and Support (CGS) applications operating at low voltage, high frequencies. This device ensures minimum output skew across the outputs of a given device.

Skew parameters are also provided as a means to measure duty cycle requirements as those found in high speed clocking systems. This minimum skew clock driver with one input driving four outputs, is specifically designed for signal generation and clock distribution applications.

### LOGIC SYMBOL



The output pins act as a single entity and will follow the state of the CLK when the clock distribution chip is selected.

### PIN DESCRIPTION

Pin Names	Description
CLK	Clock Input
O <sub>0</sub> –O <sub>3</sub>	Outputs

### TRUTH TABLE<sup>(1)</sup>

Inputs	Outputs
CLK	O <sub>0</sub> –O <sub>3</sub>
L	L
H	H

(1) L = Low Logic Level  
H = High Logic Level



Please be aware that an important notice concerning availability, standard warranty, and use in critical applications of Texas Instruments semiconductor products and disclaimers thereto appears at the end of this data sheet.

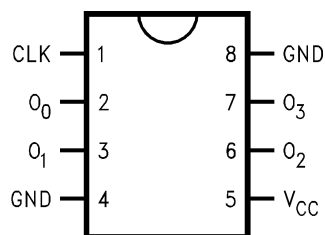
FACT is a registered trademark of Fairchild Semiconductor. All other trademarks are the property of their respective owners.

**CGS74LCT2524**

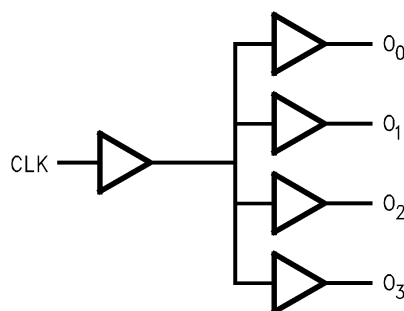
SNOS710D – JANUARY 2000 – REVISED APRIL 2013

www.ti.com

**CONNECTION DIAGRAMS**



**Figure 1. 8-Pin SOIC  
See D Package**



**Figure 2.**



These devices have limited built-in ESD protection. The leads should be shorted together or the device placed in conductive foam during storage or handling to prevent electrostatic damage to the MOS gates.

**ABSOLUTE MAXIMUM RATINGS<sup>(1)(2)</sup>**

Supply Voltage ( $V_{CC}$ )		-0.5V to 7.0V
DC Input Voltage Diode Current ( $I_{IK}$ )	$V = -0.5V$	-20 mA
	$V = V_{CC} + 0.5V$	+20 mA
DC Input Voltage ( $V_I$ )		-0.5V to $V_{CC} + 0.5V$
DC Output Diode Current ( $I_O$ )	$V = -0.5V$	-20 mA
	$V = V_{CC} + 0.5V$	+20 mA
DC Output Voltage ( $V_O$ )		-0.5V to $V_{CC} + 0.5V$
DC Output Source or Sink Current ( $I_O$ )		$\pm 50$ mA
DC $V_{CC}$ or Ground Current per Output Pin ( $I_{CC}$ or $I_{GND}$ )		$\pm 50$ mA
Storage Temperature ( $T_{STG}$ )		-65°C to +150°C
Junction Temperature ( $\theta_{JA}$ )		<b>Min</b> <b>Typ</b> <b>Max</b>
	Airflow	0              225              500 LFM
	M	167             132              117 °C/W

- (1) The Absolute Maximum Ratings are those values beyond which the safety of the device cannot be ensured. The device should not be operated at these limits. The parametric values defined in the [DC ELECTRICAL CHARACTERISTICS](#) and [AC ELECTRICAL CHARACTERISTICS](#) tables are not ensured at the absolute maximum ratings. The Recommended Operating Conditions will define the conditions for actual device operation.
- (2) If Military/Aerospace specified devices are required, please contact the Texas Instruments Sales Office/ Distributors for availability and specifications.

**RECOMMENDED OPERATING CONDITIONS**

Supply Voltage ( $V_{CC}$ )		3.0V to 3.6V
Input Voltage ( $V_{IN}$ )		0V to $V_{CC}$
Output Voltage ( $V_O$ )		0V to $V_{CC}$
Operating Temperature ( $T_A$ )	Industrial	-40°C to +85°C
	Commercial	0°C to +70°C
Input Rise and Fall Times		(0.8V to 2.0V) 9.6 ns max

## DC ELECTRICAL CHARACTERISTICS

Over recommended operating conditions unless specified otherwise.

Symbol	Parameter	Conditions	V <sub>CC</sub> (V)	CGS74LCT2524			Units
				T <sub>A</sub> = +25°C		T <sub>A</sub> = -40°C to +85°C	
				Typ	Ensured Limits		
V <sub>IH</sub>	Minimum High Level Input Voltage	V <sub>OUT</sub> = 0.1V or V <sub>CC</sub> -0.1V	3.6	1.5	2.0	2.0	V
V <sub>IL</sub>	Maximum Low Level Input Voltage	V <sub>OUT</sub> = 0.1V or V <sub>CC</sub> -0.1V	3.6	1.5	0.8	0.8	V
V <sub>OH</sub>	Minimum High Level Output Voltage	V <sub>IN</sub> = V <sub>IL</sub> or V <sub>IH</sub> , I <sub>OUT</sub> = -50 μA	3.0		2.9	2.9	V
		V <sub>IN</sub> = V <sub>IL</sub> or V <sub>IH</sub> , I <sub>OH</sub> = -12 mA	3.0		2.5	2.4	V
V <sub>OL</sub>	Minimum Low Level Output Voltage	V <sub>IN</sub> = V <sub>IL</sub> or V <sub>IH</sub> , I <sub>OUT</sub> = 50 μA	3.0		0.1	0.1	V
		V <sub>IN</sub> = V <sub>IL</sub> or V <sub>IH</sub> , I <sub>OL</sub> = -12 mA	3.0		0.3	0.4	V
I <sub>IN</sub>	Maximum Input Leakage Current	V <sub>IN</sub> = V <sub>CC</sub> , GND	3.6		±0.1	±1.0	μA
I <sub>CCT</sub>	Maximum I <sub>CC</sub> /Input	V <sub>IN</sub> = 3.0V	3.6			100	μA
I <sub>OLD</sub>	Minimum Dynamic Output Current	V <sub>OLD</sub> = 0.8V (max)	3.6			36	mA
I <sub>OHD</sub>	Output Current	V <sub>OHD</sub> = 2.0V (min)	3.6			-25	mA
I <sub>CC</sub>	Maximum Quiescent Supply Current	V <sub>IN</sub> = V <sub>CC</sub> or GND	3.6		2.5	10	μA

## AC ELECTRICAL CHARACTERISTICS

 Over recommended operating conditions unless specified otherwise. All typical values are measured at V<sub>CC</sub> = 3.3V, T<sub>A</sub> = 25°C

Symbol	Parameter	LCT2524			Units
		V <sub>CC</sub> = 3.0V to 3.6V T <sub>A</sub> = -40°C to +85°C C <sub>L</sub> = 50 pF, R <sub>L</sub> = 500Ω			
		Min	Typ	Max	
t <sub>PLH</sub>	Low-to-High Propagation Delay CLK to O <sub>n</sub>	6		15.0	ns
t <sub>PHL</sub>	High-to-Low Propagation Delay CLK to O <sub>n</sub>	6		15.0	ns

**CGS74LCT2524**

SNOS710D – JANUARY 2000 – REVISED APRIL 2013

www.ti.com

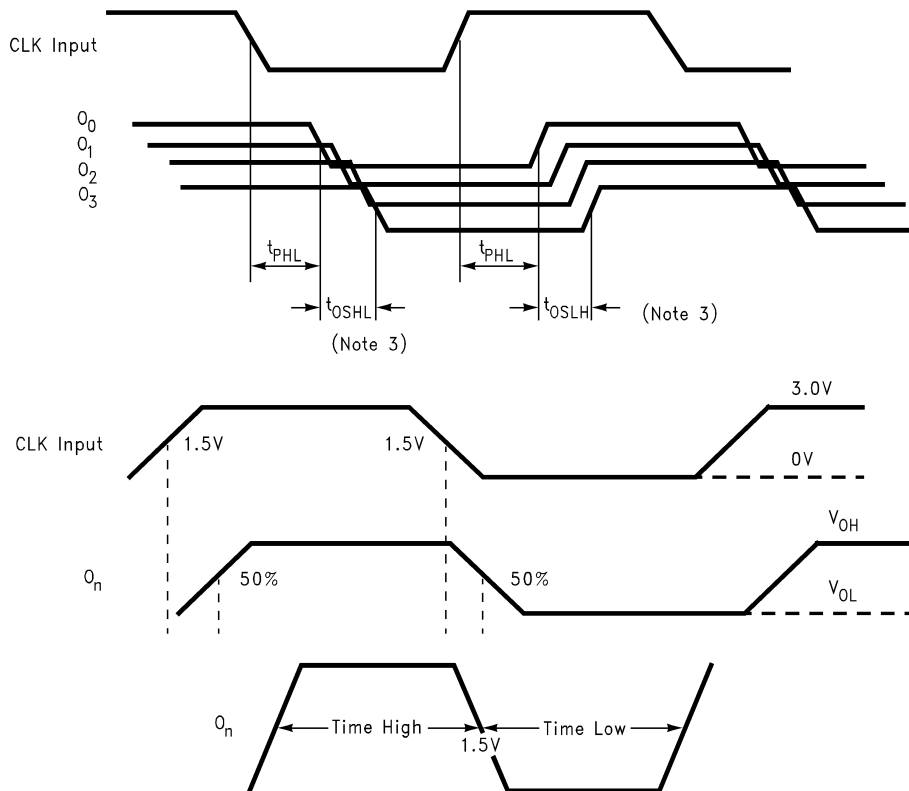
**AC ELECTRICAL CHARACTERISTICS - EXTENDED**

Over recommended operating conditions unless specified otherwise. All typical values are measured at  $V_{CC} = 3.3V$ ,  $T_A = 25^\circ C$

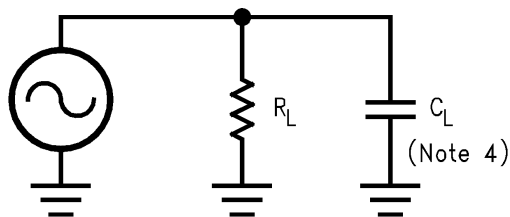
Symbol	Parameter	LCT2524			Units
		$V_{CC} = 3.0V \text{ to } 3.6V$ $T_A = -40^\circ C \text{ to } +85^\circ C$ $C_L = 50 \text{ pF}, R_L = 500\Omega$			
		Min	Typ	Max	
$f_{max}$	Maximum Operating Frequency		75		MHz
$t_{OSHL}$	Maximum Skew Common Edge Output-to-Output Variation <sup>(1)</sup>			300	ps
$t_{OSLH}$	Maximum Skew Common Edge Output-to-Output Variation <sup>(1)</sup>			300	ps
$t_{PS}$	Maximum Skew Pin (Signal) Transition Variation <sup>(2)</sup>			2.5	ns
$t_{RISE}/t_{FALL}$	Rise Time/Fall Time (from 0.8V to 2.0V/2.0V to 0.8V)			2.5	ns
$T_{HIGH}$	Time High	4			ns
$T_{LOW}$	Time Low	4			ns

- (1) Output-to-Output Skew is defined as the absolute value of the difference between the actual propagation delay for any outputs within the same packaged device. The specifications apply to any outputs switching in the same direction either HIGH-to-LOW ( $t_{OSHL}$ ) or LOW-to-HIGH ( $t_{OSLH}$ ) or in opposite directions both HL and LH ( $t_{OST}$ ). Limits are characterized and ensured by design @ 66 MHz.
- (2) Pin transition skew is the absolute difference between HIGH-to-LOW and LOW-to-HIGH propagation delay, measured at a given output pin.

**TIMING DIAGRAMS**



**TEST CIRCUIT**



$R_L$  is 500 $\Omega$

$C_L$  is 50 pF for all propagation delays and skew measurements.

**REVISION HISTORY**

**Changes from Revision C (April 2013) to Revision D** **Page**

- Changed layout of National Data Sheet to TI format ..... **5**

### IMPORTANT NOTICE

Texas Instruments Incorporated and its subsidiaries (TI) reserve the right to make corrections, enhancements, improvements and other changes to its semiconductor products and services per JESD46, latest issue, and to discontinue any product or service per JESD48, latest issue. Buyers should obtain the latest relevant information before placing orders and should verify that such information is current and complete. All semiconductor products (also referred to herein as "components") are sold subject to TI's terms and conditions of sale supplied at the time of order acknowledgment.

TI warrants performance of its components to the specifications applicable at the time of sale, in accordance with the warranty in TI's terms and conditions of sale of semiconductor products. Testing and other quality control techniques are used to the extent TI deems necessary to support this warranty. Except where mandated by applicable law, testing of all parameters of each component is not necessarily performed.

TI assumes no liability for applications assistance or the design of Buyers' products. Buyers are responsible for their products and applications using TI components. To minimize the risks associated with Buyers' products and applications, Buyers should provide adequate design and operating safeguards.

TI does not warrant or represent that any license, either express or implied, is granted under any patent right, copyright, mask work right, or other intellectual property right relating to any combination, machine, or process in which TI components or services are used. Information published by TI regarding third-party products or services does not constitute a license to use such products or services or a warranty or endorsement thereof. Use of such information may require a license from a third party under the patents or other intellectual property of the third party, or a license from TI under the patents or other intellectual property of TI.

Reproduction of significant portions of TI information in TI data books or data sheets is permissible only if reproduction is without alteration and is accompanied by all associated warranties, conditions, limitations, and notices. TI is not responsible or liable for such altered documentation. Information of third parties may be subject to additional restrictions.

Resale of TI components or services with statements different from or beyond the parameters stated by TI for that component or service voids all express and any implied warranties for the associated TI component or service and is an unfair and deceptive business practice. TI is not responsible or liable for any such statements.

Buyer acknowledges and agrees that it is solely responsible for compliance with all legal, regulatory and safety-related requirements concerning its products, and any use of TI components in its applications, notwithstanding any applications-related information or support that may be provided by TI. Buyer represents and agrees that it has all the necessary expertise to create and implement safeguards which anticipate dangerous consequences of failures, monitor failures and their consequences, lessen the likelihood of failures that might cause harm and take appropriate remedial actions. Buyer will fully indemnify TI and its representatives against any damages arising out of the use of any TI components in safety-critical applications.

In some cases, TI components may be promoted specifically to facilitate safety-related applications. With such components, TI's goal is to help enable customers to design and create their own end-product solutions that meet applicable functional safety standards and requirements. Nonetheless, such components are subject to these terms.

No TI components are authorized for use in FDA Class III (or similar life-critical medical equipment) unless authorized officers of the parties have executed a special agreement specifically governing such use.

Only those TI components which TI has specifically designated as military grade or "enhanced plastic" are designed and intended for use in military/aerospace applications or environments. Buyer acknowledges and agrees that any military or aerospace use of TI components which have **not** been so designated is solely at the Buyer's risk, and that Buyer is solely responsible for compliance with all legal and regulatory requirements in connection with such use.

TI has specifically designated certain components as meeting ISO/TS16949 requirements, mainly for automotive use. In any case of use of non-designated products, TI will not be responsible for any failure to meet ISO/TS16949.

#### Products

Audio	<a href="http://www.ti.com/audio">www.ti.com/audio</a>
Amplifiers	<a href="http://amplifier.ti.com">amplifier.ti.com</a>
Data Converters	<a href="http://dataconverter.ti.com">dataconverter.ti.com</a>
DLP® Products	<a href="http://www.dlp.com">www.dlp.com</a>
DSP	<a href="http://dsp.ti.com">dsp.ti.com</a>
Clocks and Timers	<a href="http://www.ti.com/clocks">www.ti.com/clocks</a>
Interface	<a href="http://interface.ti.com">interface.ti.com</a>
Logic	<a href="http://logic.ti.com">logic.ti.com</a>
Power Mgmt	<a href="http://power.ti.com">power.ti.com</a>
Microcontrollers	<a href="http://microcontroller.ti.com">microcontroller.ti.com</a>
RFID	<a href="http://www.ti-rfid.com">www.ti-rfid.com</a>
OMAP Applications Processors	<a href="http://www.ti.com/omap">www.ti.com/omap</a>
Wireless Connectivity	<a href="http://www.ti.com/wirelessconnectivity">www.ti.com/wirelessconnectivity</a>

#### Applications

Automotive and Transportation	<a href="http://www.ti.com/automotive">www.ti.com/automotive</a>
Communications and Telecom	<a href="http://www.ti.com/communications">www.ti.com/communications</a>
Computers and Peripherals	<a href="http://www.ti.com/computers">www.ti.com/computers</a>
Consumer Electronics	<a href="http://www.ti.com/consumer-apps">www.ti.com/consumer-apps</a>
Energy and Lighting	<a href="http://www.ti.com/energy">www.ti.com/energy</a>
Industrial	<a href="http://www.ti.com/industrial">www.ti.com/industrial</a>
Medical	<a href="http://www.ti.com/medical">www.ti.com/medical</a>
Security	<a href="http://www.ti.com/security">www.ti.com/security</a>
Space, Avionics and Defense	<a href="http://www.ti.com/space-avionics-defense">www.ti.com/space-avionics-defense</a>
Video and Imaging	<a href="http://www.ti.com/video">www.ti.com/video</a>

#### TI E2E Community

[e2e.ti.com](http://e2e.ti.com)