



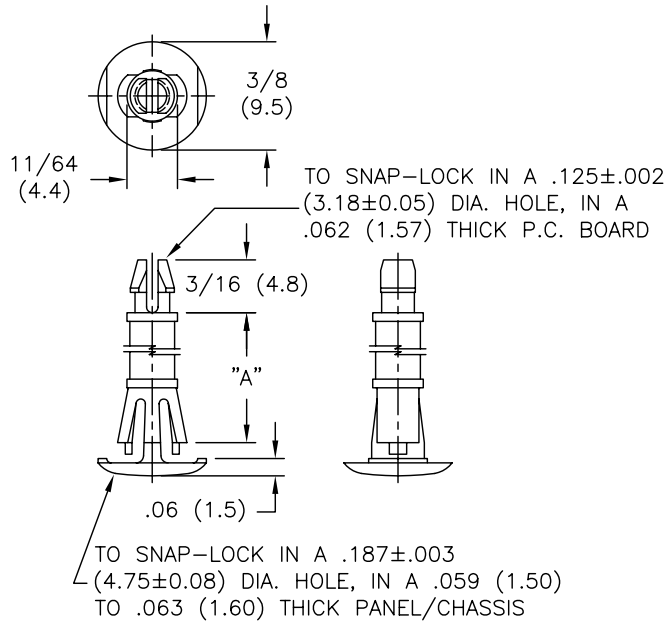
## Excellent Integrated System Limited

Stocking Distributor

Click to view price, real time Inventory, Delivery & Lifecycle Information:

[Essentra Components \(formerly Richco, Inc.\)](#)  
[RLCBSPR-6-01](#)

For any questions, you can email us directly:  
[sales@integrated-circuit.com](mailto:sales@integrated-circuit.com)



PART NO.	"A" ±.015(0.4)
RLCBSPR-4-01	1/4 (6.4)
RLCBSPR-5-01	5/16 (7.9)
RLCBSPR-6-01	3/8 (9.5)
RLCBSPR-7-01	7/16 (11.1)
RLCBSPR-8-01	1/2 (12.7)
RLCBSPR-9-01	9/16 (14.3)
RLCBSPR-10-01	5/8 (15.9)

NOTES:

- MATERIAL: NYLON 6/6 (RMS-01).  
FLAME RETARDANT: NYLON (RMS-19),  
AVAILABLE BY SPECIAL ORDER.
- COLOR: NATURAL.

TITLE: REVERSE LOCKING C.B.S., PRONGED, ROUND HOLE			DWG IN IN (MM)		FINAL	
TOLERANCES UNLESS NOTED	FILE # RLCBSPR	DWN: P.B.	APP:	PART #		
.XX=±.010	MAT'L: SEE NOTES	DT: 05-23-95	DT:	SEE TABLE		
.XXX=±.005	RE: RICHCO INC.	RICHCO INC. PO BOX 804238, CHICAGO, 60680 (773) 539-4060		PRINT TYPE CA		
FRAC=1/64						
ANG=1°						
C	CHANGED FILE NUMBER	SM 05.03.01				
B	MAT'L RMS-19 ADDED	J.L. 12.29.97				
A	CONVERTED TO ACAD	PB 05.23.95				
REV	DESCRIPTION	ENGR DATE				