

Excellent Integrated System Limited

Stocking Distributor

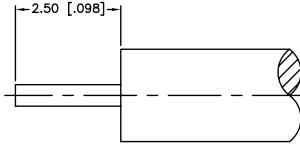
Click to view price, real time Inventory, Delivery & Lifecycle Information:

[Amphenol RF](#)
[252107-75](#)

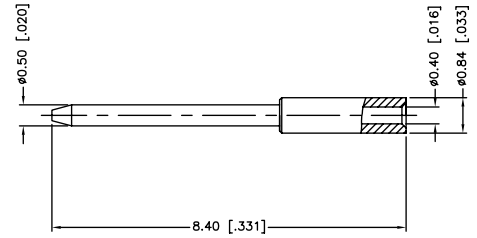
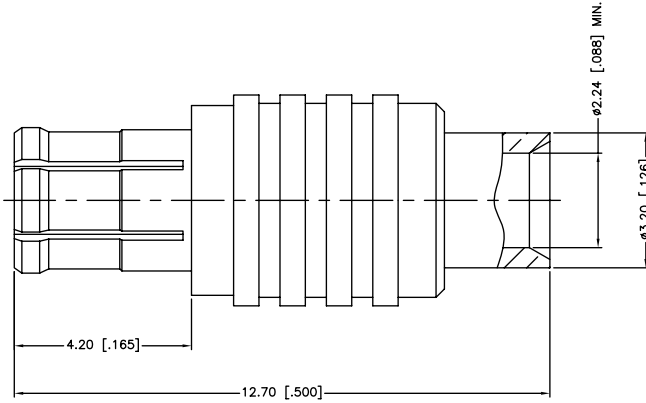
For any questions, you can email us directly:

sales@integrated-circuit.com

REV.	DATE	ECR NO.	DESCRIPTION
A	01/30/04	XXXXXX	UPDATE DRAWING FORMAT
B	05/03/11	2171	CHANGE THE PART NO. TO 252107-75



RECOMMENDED
CABLE STRIPPING DIM'S



1. CONTACT PIN TO SOLDER

UNLESS OTHERWISE SPECIFIED DIMENSIONS ARE IN MILLIMETERS. DIMENSIONS IN [] ARE IN INCHES AND FOR CUSTOMER REFERENCE ONLY.				APPROVALS	DATE	<h2 style="color: blue; margin: 0;">Amphenol Connex</h2>			
3	CONTACT PIN	BRASS	GOLD	1	DRAWN		M.ZHANG	05/03/11	PART DESCRIPTION MCX DIRECT SOLDER PLUG (FOR .085", .086" CABLE)
2	INSULATOR	PTFE	NATURAL	1	CHECKED				
1	BODY	BER. COPPER	GOLD	1	ISSUED				
	DESCRIPTION	MATERIAL	FINISH	QTY	SHEET	1 OF 1			
<small>UNLESS OTHERWISE SPECIFIED TOLERANCES FOR MILLIMETERS ARE: 0.5 - 8mm ± 0.20mm 8 - 30mm ± 0.40mm 30 - 120mm ± 0.50mm</small>				<small>UNLESS OTHERWISE SPECIFIED TOLERANCES FOR INCHES ARE: .020 - .315 = ± 0.007" .315 - 1.180 = ± 0.015" 1.180 - 4.724 = ± 0.020"</small>		PART NO. 252107-75			
DO NOT SCALE DRAWING				CAD FILE: C:/CONNEX/252107-75.DWG		DWG. NO. 252107-75.DWG			
				REV.	B	SIZE	A	SCALE	NA