

Excellent Integrated System Limited

Stocking Distributor

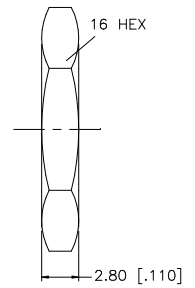
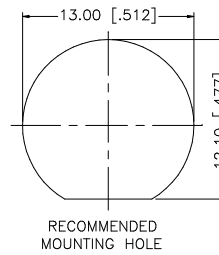
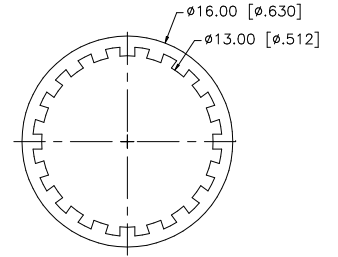
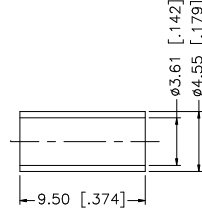
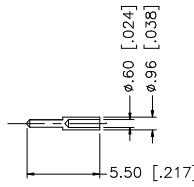
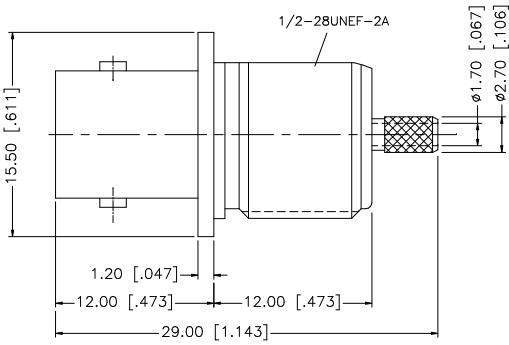
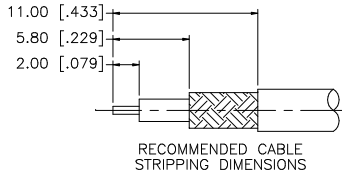
Click to view price, real time Inventory, Delivery & Lifecycle Information:

[Amphenol RF](#)
[112635](#)

For any questions, you can email us directly:

sales@integrated-circuit.com

REV.	DATE	DESCRIPTION
A	05/01/04	UPDATE DRAWING FORMAT
B	10/19/05	MODIFY FERRULE DIMENSION



- NOTE:
1. CRIMPED FERRULE
HEX CRIMP SIZE .151"
 2. CRIMPED CONTACT PIN
SQ. CRIMP SIZE 0.7mm
 3. MAX. PANEL THICKNESS = 7mm

REV.	DATE	DESCRIPTION	APPROVALS	DATE	Amphenol Connex											
8			DRAWN	G.R.S.	05/01/04	BNC BULKHEAD CRIMP JACK – FRONT MOUNT (FOR RG-316U/D CABLE)										
7			CHECKED		PART NO.					112635						
6			ISSUED		DWG. NO.					112635.DWG	REV.	B	SIZE	A	SCALE	NA
5			SHEET	1 OF 1												
4			CAD FILE	C:/112/112635.DWG												
3			<small>UNLESS OTHERWISE SPECIFIED DIMENSIONS ARE IN MILLIMETERS. DIMENSIONS IN [] ARE IN INCHES AND FOR CUSTOMER REFERENCE ONLY.</small> <small>UNLESS OTHERWISE SPECIFIED TOLERANCES FOR MILLIMETERS ARE:</small> 0.5 – 8mm ± 0.20mm 8 – 30mm ± 0.40mm 30 – 120mm ± 0.50mm <small>UNLESS OTHERWISE SPECIFIED TOLERANCES FOR INCHES ARE:</small> .020 – .315 = ± 0.007" .315 – 1.180 = ± 0.015" 1.180 – 4.724 = ± 0.020"													
4	FERRULE	COPPER	NICKEL	1												
3	CONTACT PIN	PHOS. BRONZE	GOLD	1												
2	INSULATOR	TEFLON	NATURAL	1												
1	BODY	BRASS	NICKEL	1												
	DESCRIPTION	MATERIAL	FINISH	QTY												