

Excellent Integrated System Limited

Stocking Distributor

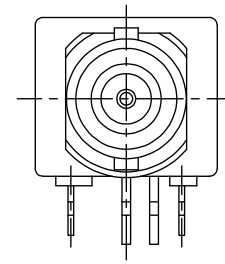
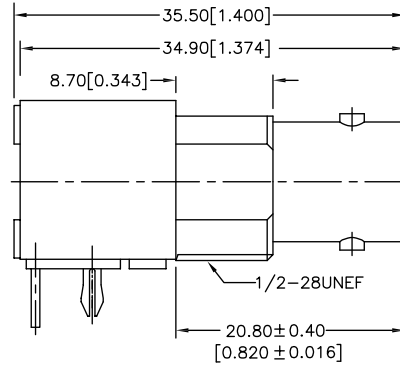
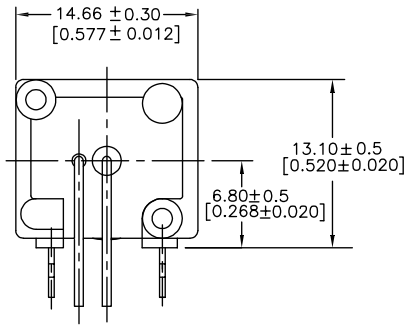
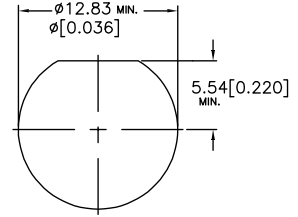
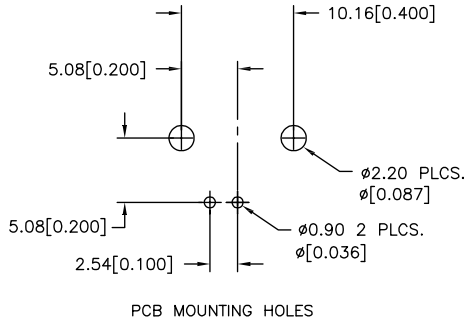
Click to view price, real time Inventory, Delivery & Lifecycle Information:

[Amphenol RF](#)
[112487](#)

For any questions, you can email us directly:

sales@integrated-circuit.com

REV.	DATE	ECR NO	DESCRIPTION
A	10/12/95	--	UPDATE DRAWING FORMAT/ MODIFY BODY
B	02/17/10	2012	HARDWARES REMOVED



DESCRIPTION	MATERIAL	FINISH	QTY	DIMENSIONS ARE IN MILLIMETERS UNLESS OTHERWISE SPECIFIED TOLERANCES ARE:	APPROVALS	DATE	Amphenol Connex							
1	BODY	DIECAST	NICKEL	1	0.5-6 = ± 0.2	DRAWN CLEMENT	2/17/10	TITLE BNC R/A PC MOUNT RECEPTACLE JACK LOW PROFILE 50 OHMS						
2	INSULATOR	PP	NATURAL	1	6-30 = ± 0.4	CHECKED					SIZE A	FSCM NO. 99001	DWG. NO. 112487.DWG	REV. B
3	CONTACT PIN	PHOSPHOR BRONZE	GOLD	1	30-120 = ± 0.6	ISSUED					SCALE 2.5:1	PART NO. 112487	SHEET 1 OF 1	
					120-315 = ± 1									
					315-1000 = ± 1.6									
					1000-2000 = ± 2.4									
					DO NOT SCALE DRAWING									