

Excellent Integrated System Limited

Stocking Distributor

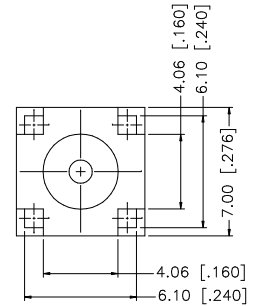
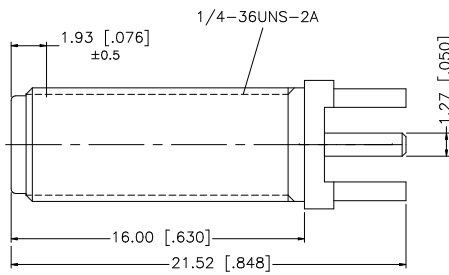
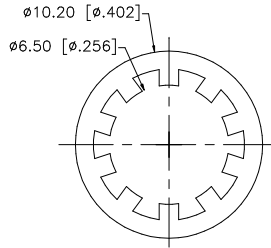
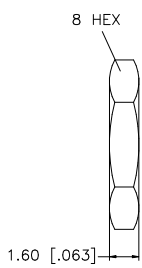
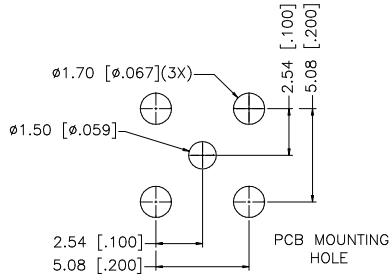
Click to view price, real time Inventory, Delivery & Lifecycle Information:

[Amphenol RF](#)
[132291](#)

For any questions, you can email us directly:

sales@integrated-circuit.com

REV.	DATE	DESCRIPTION
A	01/30/04	UPDATE DRAWING FORMAT



NOTE:
1. MAX. PANEL THICKNESS = 7.5mm

DESCRIPTION	MATERIAL	FINISH	QTY	DO NOT SCALE DRAWING	APPROVALS	DATE	Amphenol Connex PART DESCRIPTION SMA BULKHEAD P.C. MOUNT JACK PART NO. 132291	DWG. NO. 132291.DWG REV. A SIZE A SCALE NA
8					DRAWN G.R.S.	01/30/04		
7					CHECKED			
6					ISSUED			
5	HEX NUT	BRASS	GOLD	1	SHEET 1 OF 1			
4	LOCK WASHER	BRASS	GOLD	1				
3	CONTACT PIN	BER. COPPER	GOLD	1				
2	INSULATOR	TEFLON	NATURAL	1				
1	BODY	BRASS	GOLD	1				

UNLESS OTHERWISE SPECIFIED DIMENSIONS ARE IN MILLIMETERS. DIMENSIONS IN [] ARE IN INCHES AND FOR CUSTOMER REFERENCE ONLY.
 UNLESS OTHERWISE SPECIFIED TOLERANCES FOR MILLIMETERS ARE:
 0.5 - 8mm ± 0.20mm
 8 - 30mm ± 0.40mm
 30 - 120mm ± 0.50mm
 UNLESS OTHERWISE SPECIFIED TOLERANCES FOR INCHES ARE:
 .020 - .315 = ± 0.007"
 .315 - 1.180 = ± 0.015"
 1.180 - 4.724 = ± 0.020"

CAD FILE C:/132/132291.DWG