

Excellent Integrated System Limited

Stocking Distributor

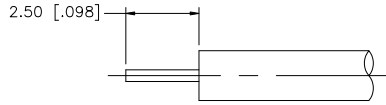
Click to view price, real time Inventory, Delivery & Lifecycle Information:

[Amphenol RF](#)
[262127](#)

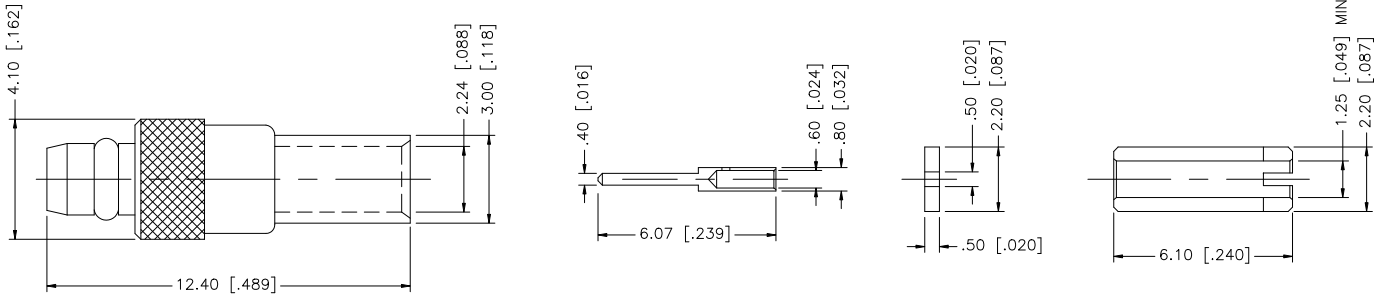
For any questions, you can email us directly:

sales@integrated-circuit.com

REV.	DATE	DESCRIPTION
NC	05/25/00	INITIAL RELEASE
A	12/11/07	UPDATE DRAWING FORMAT



RECOMMENDED CABLE STRIPPING DIM'S.



8	UNLESS OTHERWISE SPECIFIED DIMENSIONS ARE IN MILLIMETERS. DIMENSIONS IN [] ARE IN INCHES AND FOR CUSTOMER REFERENCE ONLY.			APPROVALS	DATE	Amphenol Connex	
7	UNLESS OTHERWISE SPECIFIED TOLERANCES FOR MILLIMETERS ARE: 0.5 - 8mm ± 0.20mm 8 - 30mm ± 0.40mm 30 - 120mm ± 0.50mm			DRAWN G.R.S.	12/11/07		PART DESCRIPTION MMCX STRAIGHT DIRECT SOLDER PLUG (FOR .047" SEMI-RIGID CABLE)
6	FERRULE	COPPER	GOLD	1	CHECKED	PART NO. 262127	
5	RETAINER RING	BER. COPPER	GOLD	1	ISSUED		DWG. NO. 262127.DWG
4	BARREL	BRASS	GOLD	1	SHEET 1 OF 1	REV. A	
3	CONTACT PIN	BRASS	GOLD	1	CAD FILE C:/262/262127.DWG	SIZE A	
2	INSULATOR	TEFLON	NATURAL	1		SCALE NA	
1	BODY	BRASS	GOLD	1			
DESCRIPTION MATERIAL FINISH QTY				DO NOT SCALE DRAWING			