

Excellent Integrated System Limited

Stocking Distributor

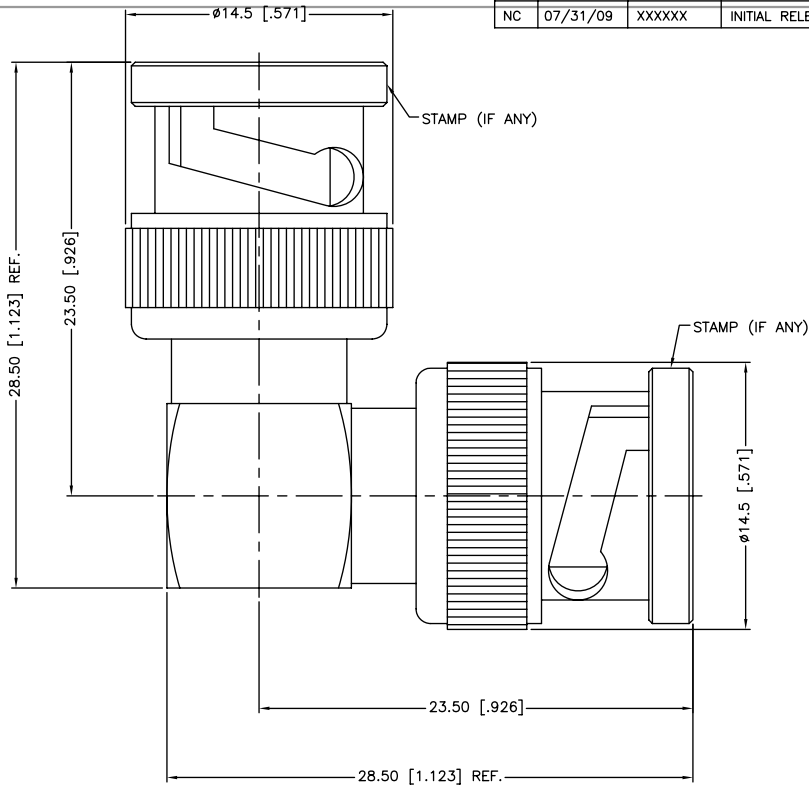
Click to view price, real time Inventory, Delivery & Lifecycle Information:

[Amphenol RF](#)
[112655](#)

For any questions, you can email us directly:

sales@integrated-circuit.com

REV.	DATE	ECR NO.	DESCRIPTION
NC	07/31/09	XXXXXX	INITIAL RELEASE



NO.	DESCRIPTION	MATERIAL	FINISH	QTY
11	COVER	BRASS	NICKEL	1
10	CONTACT PIN	BRASS	GOLD	2
9	WASHER	BRASS	NICKEL	2
8	SPRING	SK5	NICKEL	4
7	RETAINER RING	BRASS	NICKEL	2
6	GASKET	RUBBER	RED	2
5	CONTACT PIN	BRASS	GOLD	1
4	INSULATOR	PTFE	NATURAL	2
3	BODY	BRASS	NICKEL	1
2	HOUSING	BRASS	NICKEL	1
1	SHELL	BRASS	NICKEL	2
	DESCRIPTION	MATERIAL	FINISH	QTY

UNLESS OTHERWISE SPECIFIED DIMENSIONS ARE IN MILLIMETERS. DIMENSIONS IN [] ARE IN INCHES AND FOR CUSTOMER REFERENCE ONLY.
 UNLESS OTHERWISE SPECIFIED TOLERANCES FOR MILLIMETERS ARE:
 0.5 - 8mm ± 0.20mm
 8 - 30mm ± 0.40mm
 30 - 120mm ± 0.50mm
 UNLESS OTHERWISE SPECIFIED TOLERANCES FOR INCHES ARE:
 .020 - .315 = ± 0.007"
 .315 - 1.180 = ± 0.015"
 1.180 - 4.724 = ± 0.020"

APPROVALS	DATE
DRAWN M.ZHANG	07/31/09
CHECKED	
ISSUED	
SHEET 1 OF 1	
CAD FILE C:/CONNEX/112655.DWG	

Amphenol Connex			
PART DESCRIPTION BNC MALE TO MALE R/A ADAPTOR			
PART NO.		112655	
DWG. NO.	112655.DWG	REV.	NC
SIZE	A	SCALE	NA

DO NOT SCALE DRAWING