



Distributor of CTS Electronic Components: Excellent Integrated System Limited

Datasheet of 4204-050LF - FILTER EMI 5000 PF PI TYPE

Contact us: sales@integrated-circuit.com Website: www.integrated-circuit.com

Excellent Integrated System Limited

Stocking Distributor

Click to view price, real time Inventory, Delivery & Lifecycle Information:

[CTS Electronic Components](#)

[4204-050LF](#)

For any questions, you can email us directly:

sales@integrated-circuit.com

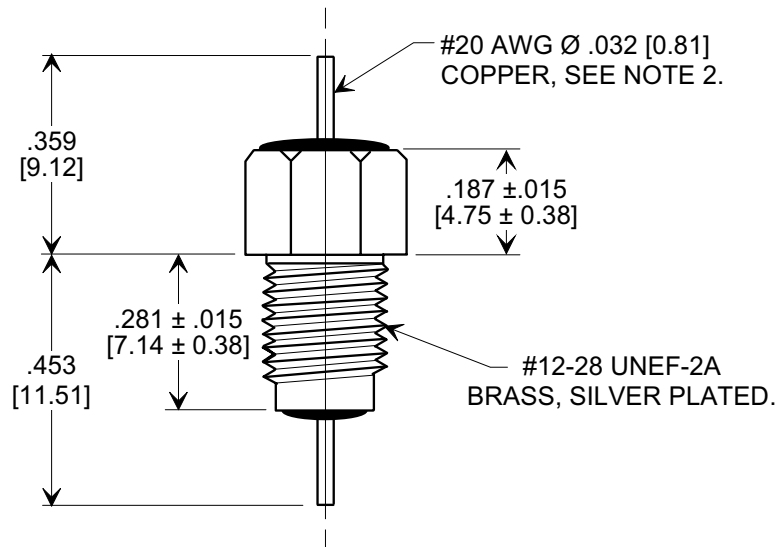
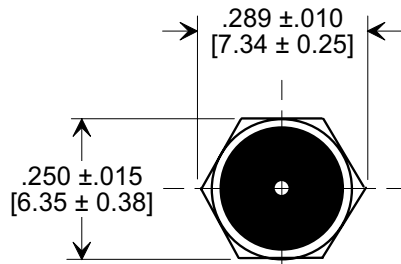
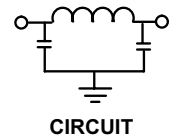
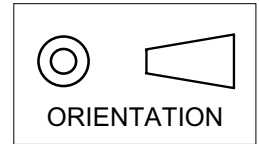
MARKETING SALES DRAWING

DIMENSIONS IN INCHES - DO NOT SCALE THIS DRAWING

DIMENSIONS IN METRIC - []

This drawing is the property of Tusonix, Inc., and may not be used, reproduced, published or disclosed to others without expressed authorization by Tusonix Inc.

Electrical Testing per Tusonix standard test plans and Mil-Std-202 Test Methods.



NOTES:

- TUSONIX STANDARD PART NUMBER: 4204-050.
TUSONIX RoHS COMPLIANT PART NUMBER: 4204-050 LF.
CUSTOMER MUST SPECIFY STANDARD OR RoHS PART NUMBER WHEN ORDERING.
- LEAD FINISH: STANDARD PART #: 60/40 SOLDER PLATED. RoHS PART #: SILVER PLATED.
- PART MARKING: TRADEMARK AND VARIATION NUMBER ON HEX FLATS.
STANDARD PART: BLACK INK. RoHS PART: GREEN INK.
- SUPPLIED WITH SILVER PLATED COPPER ALLOY HEX NUT AND INTERNAL TOOTH LOCK WASHER.

MIN. CAP. (pF)	WORKING VOLTAGE (VDC)		CURRENT (Idc)	I.R. MIN. @ 100 (VDC)	DWV (VDC)	MINIMUM NO LOAD INSERTION LOSS (dB) AT 25°C PER MIL-STD -220			
	85°C	125°C				10 MHz	100 MHz	1 GHz	10 GHz
5000	200	100	10 A	10 G Ω	400	20	65	70	70

X-2015 Rev-0	REVISION RECORD		ADDED NOTES: IR & DWV. S.M. 02-20-06	--TOLERANCES-- Unless Otherwise Specified		Title		
	Original Release	0		DECIMAL ± .031 [0.79]	BUSHING STYLE EMI FILTER		Drawn S.M. 05-22-02 Scale 3 X	
	C.O.	2898		ANGLES ±				
	RDN TO COMP FMT & ADDED METRIC. 02-12-02	1			Approved J.Mc. 05-22-02			
20020522-6-07	2		TUSONIX TUCSON, ARIZONA		A 4204-050			
20060109-2-10								