

## Excellent Integrated System Limited

Stocking Distributor

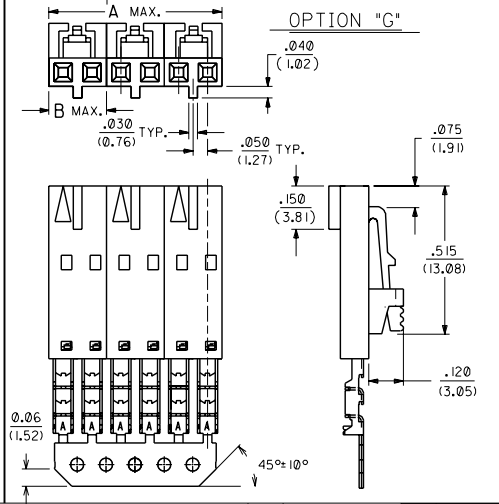
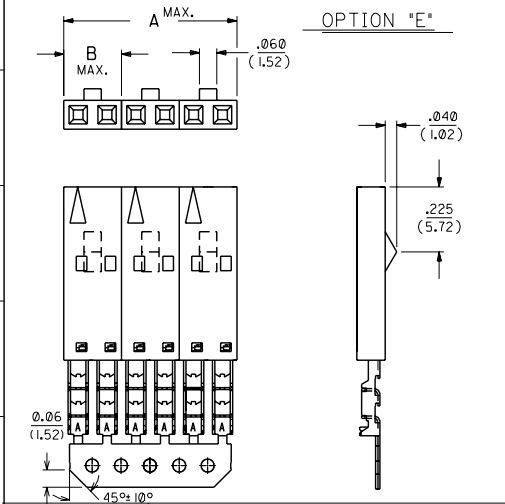
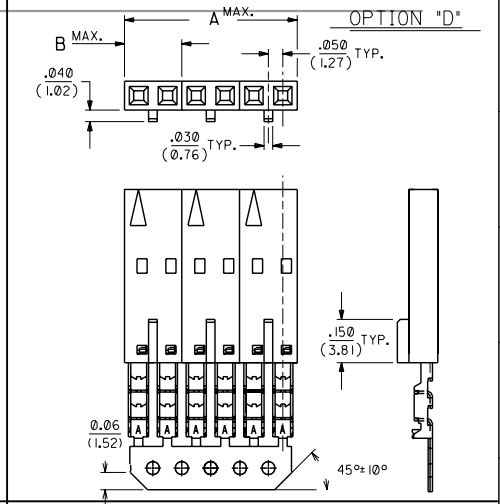
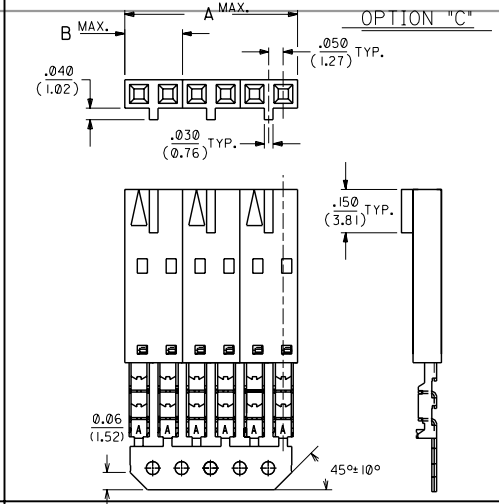
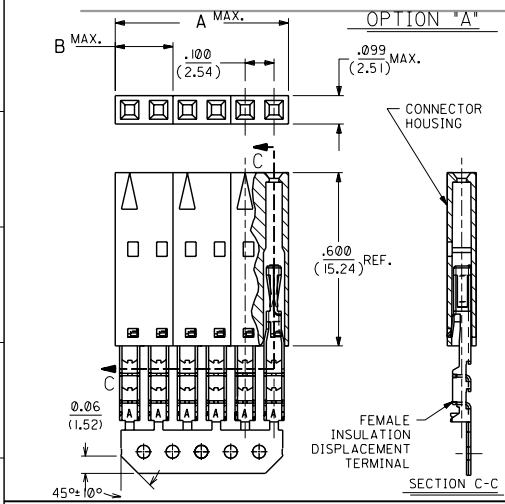
Click to view price, real time Inventory, Delivery & Lifecycle Information:

[Molex Connector Corporation](#)

[0014607023](#)

For any questions, you can email us directly:

[sales@integrated-circuit.com](mailto:sales@integrated-circuit.com)



- NOTES:**
- TO BE USED WITH #22-#28 AWG STRANDED WIRE WITH (1.35)/.053 DIA. MAX. INSULATION.
  - STANDARD PACKAGING FOR GROUPED HOUSING ASSEMBLIES PER PK-70873-0215.
  - TERMINALS ARE SHOWN PRE-LOADED INTO HOUSING AND LOCKED INTO THE FIRST ROW OF WINDOWS.
  - ALL DIMENSIONS ARE REFERENCE ONLY.
  - SEE DWG. SD-70066-\*\*\*\* FOR OPTIONAL HOUSING DETAILS.
  - REFER TO PRODUCT SPECIFICATION PS-70400.
  - FOR ACCOUNTING PURPOSES ONLY, ONE EDP ORDER NUMBER REPRESENTS ONLY ONE HOUSING OF ANY GIVEN CHAINED COMBINATION OF CKT. SIZES.
- PLATING CODES:**
- 164 - .000150 MIN. TIN/LEAD PLATE OVER NICKEL PLATE.
  - 571 - .000015 MIN. GOLD PLATE IN SELECTED AREA, .000075 MIN. TIN/LEAD PLATE IN SELECTED AREA, OVER NICKEL PLATE OVERALL.
  - 574 - .000030 MIN. GOLD PLATE IN SELECTED AREA, .000075 MIN. TIN/LEAD PLATE IN SELECTED AREA, OVER NICKEL PLATE OVERALL.
  - P164 - .000150 MIN. TIN/LEAD PLATE OVER MIN. NICKEL PLATE. (PRE-PLATE)

PLATING CODE	CARRIER STRIPE ON
164	NONE
571	YELLOW
574	RED
P164	NONE

I.D. SLOT/WIRE GAUGE CHART		
SLOT I.D.	SLOT SIZE	WIRE GAUGE
A	.015 ± .002 / (.038 ± 0.05)	24 AWG - STRANDED
B	.011 ± .002 / (.028 ± 0.05)	26 AWG - STRANDED
C	.0075 ± .002 / (.019 ± 0.05)	28 AWG - STRANDED
D	.019 ± .002 / (.048 ± 0.05)	22 AWG - STRANDED

REV. NO.	DESCRIPTION	REV. NO.	DESCRIPTION
E9	ADD -7713,7723 ECR UDT2000-1190 KMS 05/30/2000	E6	ADD CARRIER CHAMF ECN *UDT 1998-0280 05/20/98 LMCGRATH
E8	SHT 4, ADD P/N-0074 UDT 2000-0605 GIZOWSKI 12-29-99	E5	ADDED PARTS ECR #U7-8423 MCFARLAN 95-10-16
E7	REL-0071, 72, 73 UDT 1999-0371 SCHAFFER 11-13-9	E4	ADDED ENG# -0053 ECR# U7-0283 MCFARLAN 96-9-17
LTR.	REVISIONS	LTR.	REVISIONS

DIMENSIONS SHOWN IN METRIC INCH UNLESS OTHERWISE SPECIFIED TOLERANCES UNLESS OTHERWISE SPECIFIED

REVISIONS: 4 E9, 3 E, 2 E, 1 E9, MFG, SH, REV.

REVISIONS: 4 E9, 3 E, 2 E, 1 E9, MFG, SH, REV.

FILE NAME: SDA-70977-\*\*\*\*

DATE: 11/20/89

DESIGNED BY: MJB

CHECKED BY: MJB

SCALE: 4 : 1

THIS DRAWING CONTAINS INFORMATION THAT IS PROPRIETARY TO MOLEX INC. AND SHALL NOT BE USED WITHOUT WRITTEN PERMISSION.

ONE EDP NUMBER REPRESENTS ONE INDIVIDUAL HOUSING (SEE NOTE 7)

EDP. NUMBER	ENG. NUMBER	DIM. "A" (MAX.)	DIM. "B" (MAX.)	OPTION	CIRCUIT SIZE	NUMBER OF HOUSINGS IN TOTAL ASSEMBLY	HOUSING NO.	TERMINAL NO.	PLATING	WIRE SIZE
014-60-7022	A-70977-0001	1.999 (50.77)	.199 (5.05)	G	2	10	70066-0176	70028-0005	164	24 AWG
014-60-7023	A-70977-0002	1.999 (50.77)	.199 (5.05)	G	2	10	70066-0176	70028-0007	164	26 AWG
014-60-7034	A-70977-0003	2.399 (60.93)	.299 (7.59)	A	3	8	70066-0037	70028-0030	164	22 AWG
014-60-7032	A-70977-0004	1.199 (30.45)	.299 (7.59)	G	3	4	70066-0177	70028-0005	164	24 AWG
014-60-3027	A-70977-0005	.599 (15.21)	.199 (5.05)	A	2	3	70066-0036	70028-0005	164	24 AWG
014-60-4021	A-70977-0006	.599 (15.21)	.199 (5.05)	A	2	3	70066-0036	70028-0007	164	26 AWG
014-60-4025	A-70977-0007	.599 (15.21)	.199 (5.05)	A	2	3	70066-0036	70028-0009	164	28 AWG
014-62-4029	A-70977-0008	.599 (15.21)	.199 (5.05)	A	2	3	70066-0036	70028-0011	571	24 AWG
014-62-5023	A-70977-0009	.599 (15.21)	.199 (5.05)	A	2	3	70066-0036	70028-0013	571	26 AWG
014-62-5027	A-70977-0010	.599 (15.21)	.199 (5.05)	A	2	3	70066-0036	70028-0015	571	28 AWG
014-62-6021	A-70977-0011	.599 (15.21)	.199 (5.05)	A	2	3	70066-0036	70028-0017	574	24 AWG
014-62-6025	A-70977-0012	.599 (15.21)	.199 (5.05)	A	2	3	70066-0036	70028-0019	574	26 AWG
014-62-6029	A-70977-0013	.599 (15.21)	.199 (5.05)	A	2	3	70066-0036	70028-0021	574	28 AWG
014-60-3028	A-70977-0014	.599 (15.21)	.199 (5.05)	C	2	3	70066-0071	70028-0005	164	24 AWG
014-60-4022	A-70977-0015	.599 (15.21)	.199 (5.05)	C	2	3	70066-0071	70028-0007	164	26 AWG
014-60-4026	A-70977-0016	.599 (15.21)	.199 (5.05)	C	2	3	70066-0071	70028-0009	164	28 AWG
014-62-5020	A-70977-0017	.599 (15.21)	.199 (5.05)	C	2	3	70066-0071	70028-0011	571	24 AWG
014-62-5024	A-70977-0018	.599 (15.21)	.199 (5.05)	C	2	3	70066-0071	70028-0013	571	26 AWG
014-62-5028	A-70977-0019	.599 (15.21)	.199 (5.05)	C	2	3	70066-0071	70028-0015	571	28 AWG
014-62-6022	A-70977-0020	.599 (15.21)	.199 (5.05)	C	2	3	70066-0071	70028-0017	574	24 AWG
014-62-6026	A-70977-0021	.599 (15.21)	.199 (5.05)	C	2	3	70066-0071	70028-0019	574	26 AWG
014-62-7020	A-70977-0022	.599 (15.21)	.199 (5.05)	C	2	3	70066-0071	70028-0021	574	28 AWG
014-60-3029	A-70977-0023	.599 (15.21)	.199 (5.05)	D	2	3	70066-0106	70028-0005	164	24 AWG
014-60-4023	A-70977-0024	.599 (15.21)	.199 (5.05)	D	2	3	70066-0106	70028-0007	164	26 AWG
014-60-4027	A-70977-0025	.599 (15.21)	.199 (5.05)	D	2	3	70066-0106	70028-0009	164	28 AWG

70977

A

C

MFG. SH. REV.		V = 0		REVISIONS		REVISE ONLY ON CAD SYSTEM	
B		SEE SHEET I		A I		SEE SHEET I	
E		SEE SHEET I		A		SEE SHEET I	
LTR.	REVISIONS	LTR.	REVISIONS	DIMENSIONS SHOWN IN METRIC INCH UNLESS OTHERWISE SPECIFIED TOLERANCES UNLESS NOTED			
				INCH		METRIC	
				3 PLACE ± ---		---	
				2 PLACE ± ---		---	
				1 PLACE ---		---	
				DRAFT ANGLES, IF APPLICABLE, MUST REMAIN WITHIN DIMENSIONS			
				DRWG. BY: AAB		CHKD. BY:	
				APP'D. BY: MJM		SCALE: 1	
				FILE NAME: S70977.X2		DATE: 01/18/91	
				DRAWING NO.: SDA-70977-0002		SHEET NO.: 2	
				TITLE: ASSEMBLY CONNECTOR BOX 1.D SINGLE ROW - .100 GRID GROUPED HOUSINGS			
				MOLEX INCORPORATED SEE CHART			
				THEY SHOWN CONTAIN INFORMATION THAT IS PROPRIETARY TO MOLEX INC. AND SHALL NOT BE USED WITHOUT WRITTEN PERMISSION.			