

## Excellent Integrated System Limited

Stocking Distributor

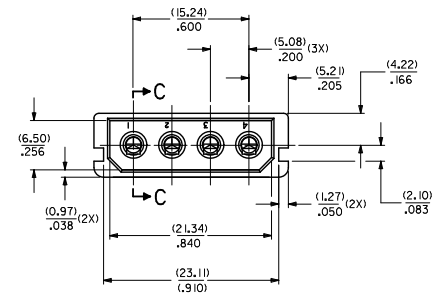
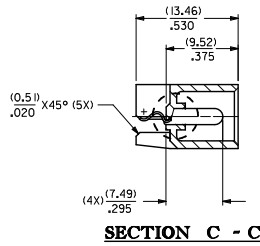
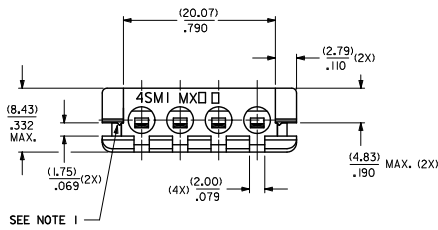
Click to view price, real time Inventory, Delivery & Lifecycle Information:

[Molex Connector Corporation](#)  
[0015244784](#)

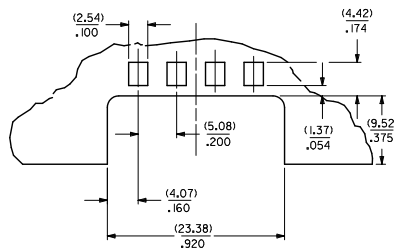
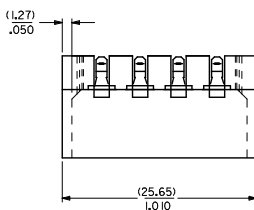
For any questions, you can email us directly:

[sales@integrated-circuit.com](mailto:sales@integrated-circuit.com)

MAT'L NO.	ENG NO.
15-24-4784	A-8981-4SM8-LF



**RECOMMENDED P.C. BOARD LAYOUT**



**NOTES:**

- MOLDED RIBS TO PROVIDE AN INTERFERENCE FIT TO A (1.62± 0.10)/ P.C. BOARD
- PLATING  
POSTPLATE (0.00254)/.000100 MIN. TIN OVER 0.00127/(.000050) MIN. NICKEL OVERALL.
- PART INTENDED TO MATE WITH HOUSING 8981-4P2 AND TERMINAL 8980-3\*
- PRODUCT SPEC. PS-8981-4SM\* APPLIES.
- MATERIAL:  
HOUSING - NYLON 46, GLASS FILLED,  
UL 94V-0, COLOR: NATURAL (OFF-WHITE)  
TERMINAL - PHOSPHOR BRONZE
- PARTS TO BE PACKED IN MOISTURE BARRIER BAG.

<b>ADD NOTE 6.</b> EC NO.: S2012-0445 DRAWN BY: DRWNSKANG CHECKED BY: CHKDATSEE APPROVED BY: APRRHLONG 2011/12/07 2012/01/05 2012/07/10	QUALITY SYMBOLS	GENERAL TOLERANCES (UNLESS SPECIFIED)	DIMENSION STYLE	SCALE	DESIGN UNITS	THIRD ANGLE PROJECTION
	▽=0	mm INCH	MM/IN	NTS	METRIC	
	▽=0	4 PLACES ± --- ± ---	DRAWN BY DATE			TITLE
		3 PLACES ± --- ± .008	JWAN 1995/06/29			POWER CONNECTOR, 4 CKTS DUAL SLOTS, SMT
	2 PLACES ± 0.20 ± ---	CHECKED BY DATE				
	1 PLACE ± --- ± ---	SKTOH 1995/06/29				
	ANGULAR ± 3 °	APPROVED BY DATE				
		MSIMMEL 1995/06/30				
	DRAFT WHERE APPLICABLE MUST REMAIN WITHIN DIMENSIONS	MATERIAL NO.				
		15-24-4784				
		DOCUMENT NO.				
		SD-8981-4SM8				
		SHEET NO.				
		1 OF 1				
		THIS DRAWING CONTAINS INFORMATION THAT IS PROPRIETARY TO MOLEX INCORPORATED AND SHOULD NOT BE USED WITHOUT WRITTEN PERMISSION				