

Excellent Integrated System Limited

Stocking Distributor

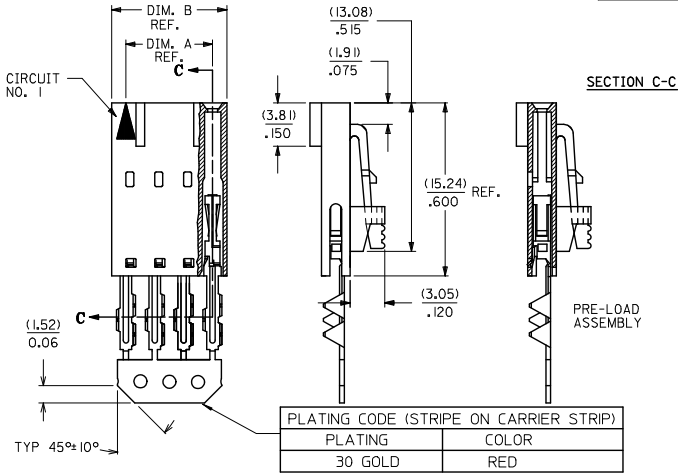
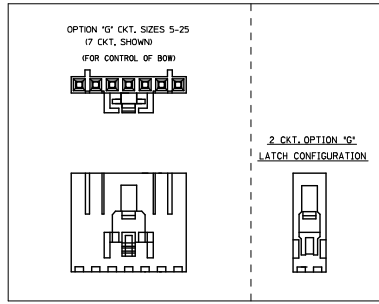
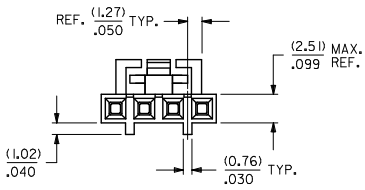
Click to view price, real time Inventory, Delivery & Lifecycle Information:

[Molex Connector Corporation](#)
[0015474087](#)

For any questions, you can email us directly:

sales@integrated-circuit.com

"G" - OPTION



| PLATING CODE (STRIPE ON CARRIER STRIP) | |
|--|-------|
| PLATING | COLOR |
| 30 GOLD | RED |

| CKT. SIZE | EDP. NO. | ENG. NO. | A | B |
|-----------|-------------|------------|------------------|------------------|
| 2 | 015-47-4027 | 70430-0491 | (2.54) .100 | (5.05) .199 |
| 3 | 015-47-4037 | 70430-0492 | (5.08) .200 | (7.53) .299 |
| 4 | 015-47-4047 | 70430-0493 | (7.62) .300 | (10.13) .399 |
| 5 | 015-47-4057 | 70430-0494 | (10.16) .400 | (12.67) .499 |
| 6 | 015-47-4067 | 70430-0495 | (12.70) .500 | (15.21) .599 |
| 7 | 015-47-4077 | 70430-0496 | (15.24) .600 | (17.75) .699 |
| 8 | 015-47-4087 | 70430-0497 | (17.78) .700 | (20.29) .799 |
| 9 | 015-47-4097 | 70430-0498 | (20.32) .800 | (22.83) .899 |
| 10 | 015-47-4107 | 70430-0499 | (22.86) .900 | (25.37) .999 |
| 11 | 015-47-4117 | 70430-0500 | (25.40) 1.000 | (27.91) 1.099 |
| 12 | 015-47-4127 | 70430-0501 | (27.94) 1.100 | (30.45) 1.199 |
| 13 | 015-47-4137 | 70430-0502 | (30.48) 1.200 | (32.99) 1.299 |
| 14 | 015-47-4147 | 70430-0503 | (33.02) 1.300 | (35.53) 1.399 |
| 15 | 015-47-4157 | 70430-0504 | (35.56) 1.400 | (38.07) 1.499 |
| 16 | 015-47-4167 | 70430-0505 | (38.10) 1.500 | (40.61) 1.599 |
| 17 | 015-47-4177 | 70430-0506 | (40.64) 1.600 | (43.15) 1.699 |
| 18 | 015-47-4187 | 70430-0507 | (43.18) 1.700 | (45.69) 1.799 |
| 19 | 015-47-4197 | 70430-0508 | (45.72) 1.800 | (48.23) 1.899 |
| 20 | 015-47-4207 | 70430-0509 | (48.26) 1.900 | (50.77) 1.999 |
| 21 | 015-47-4217 | 70430-0510 | (50.80) 2.000 | (53.31) 2.099 |
| 22 | 015-47-4227 | 70430-0511 | (53.34) 2.100 | (55.85) 2.199 |
| 23 | 015-47-4237 | 70430-0512 | (55.88) 2.200 | (58.39) 2.299 |
| 24 | 015-47-4247 | 70430-0513 | (58.42) 2.300 | (60.93) 2.399 |
| 25 | 015-47-4257 | 70430-0514 | (60.96) 2.400 | (63.47) 2.499 |

- HOUSING MATERIAL: GLASS FILLED POLYESTER, UL94V-0. COLOR: BLACK. TERMINAL MATERIAL: PHOSPHOR BRONZE. PLATING 30 GOLD -0.76 MICROMETERS/30 MICROINCHES MINIMUM GOLD PLATE IN SELECT AREA 1.90 MICROMETERS/75 MICROINCHES MINIMUM TIN PLATE IN SELECT AREA 1.27 MICROMETERS/50 MICROINCHES MINIMUM NICKEL PLATE OVERALL.
- PRE LOADED ASSEMBLY TO BE USED WITH (0.30)/.012 MAX. THICK FLAT CABLE WITH (1.57)/.062 WIDE COPPER CONDUCTORS ON (2.54)/.100 CENTERS OR, (0.13)/.005-(0.28)/.011 THICK MYLAR WITH (1.02)/.040 - (1.65)/.065 WIDE SILVER INK CONDUCTORS ON (2.54)/.100 CENTERS.
- PRODUCT SPECIFICATION: PS-70430.
- STANDARD PACKING PER PK70873-0001 SHALL BE USED.
- SEE CHART FOR CIRCUIT SIZES, "A" AND "B" DIMENSIONS.
- TWO (2) CIRCUIT ASSEMBLIES SUPPLIED AS GROUPED PAIRS.
- PART MATES WITH (0.64)/.025 SQ. PINS, (8.13)/.320 TO (5.08)/.200 LONG ON (2.54)/.100 CENTERS.
- PARTS CONFORM TO CLASS B COSMETIC SPECIFICATION PS-45499-002.

THE PRIMARY CARTON WITH A LABEL STATING "ELV AND RoHS COMPLIANT" IS LEAD FREE. CARTONS WITHOUT THIS LABEL MAY CONTAIN LEAD.

| | | | | | | | | | |
|--|--------------------------------------|---------------------------------------|--|---|--|---------------------|--------------|--|--|
| STANDARDIZE EC NO: UC22015-2452 2012/12/18 DRAWN BY: CHIKOJORDAN 2012/12/18 CHECKED BY: APPASMILLER 2013/01/31 | QUALITY SYMBOLS ▽=0 ▽=0 ▽=0 | GENERAL TOLERANCES (UNLESS SPECIFIED) | | DIMENSION STYLE | | SCALE | DESIGN UNITS | THIRD ANGLE PROJECTION | |
| | | | | MM/IN | | | | | |
| | | 4 PLACES ± --- ± --- | | DRAWN BY: RAS | | DATE: 1986/07/21 | | ASSEMBLY, CONNECTOR FFC FEMALE SINGLE ROW (2.54)/.100 GRID | |
| | | 3 PLACES ± --- ± .010 | | CHECKED BY: MJM | | DATE: 1986/07/21 | | | |
| 2 PLACES ± 0.25 ± .015 | | APPROVED BY: MILLER | | DATE: 2013/01/31 | | molex | | | |
| 1 PLACE ± 0.38 ± --- | | MATERIAL NO. | | DOCUMENT NO. | | | | SHEET NO. | |
| 0 PLACE ± --- ± --- | | ANGULAR ± 1/2° | | SEE TABLE | | SDA-70430-0491-0514 | | 1 OF 1 | |
| DRAFT WHERE APPLICABLE MUST REMAIN WITHIN DIMENSIONS | | SIZE C | | THIS DRAWING CONTAINS INFORMATION THAT IS PROPRIETARY TO MOLEX INCORPORATED AND SHOULD NOT BE USED WITHOUT WRITTEN PERMISSION | | | | | |