

## **Excellent Integrated System Limited**

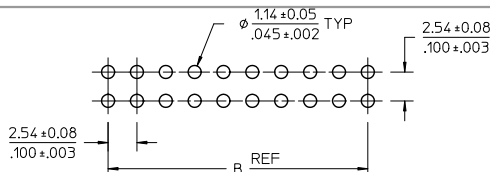
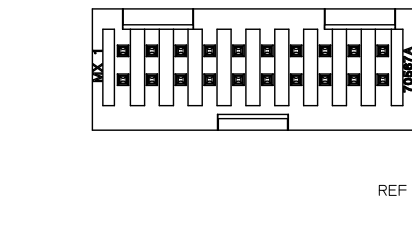
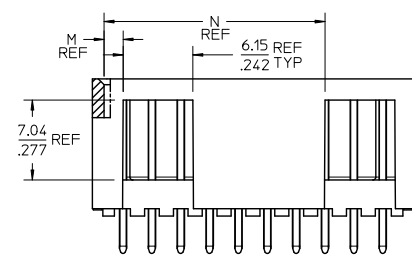
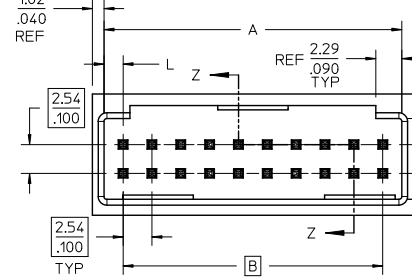
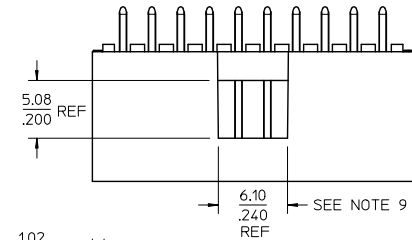
Stocking Distributor

Click to view price, real time Inventory, Delivery & Lifecycle Information:

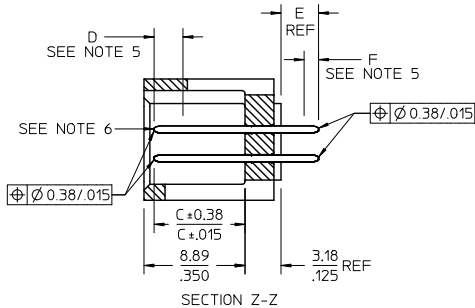
[Molex Connector Corporation](#)  
[0015800241](#)

For any questions, you can email us directly:  
[sales@integrated-circuit.com](mailto:sales@integrated-circuit.com)

OPTION A



PCB LAYOUT: COMPONENT SIDE  
TYPICAL PCB THICKNESS: 2.361/.093



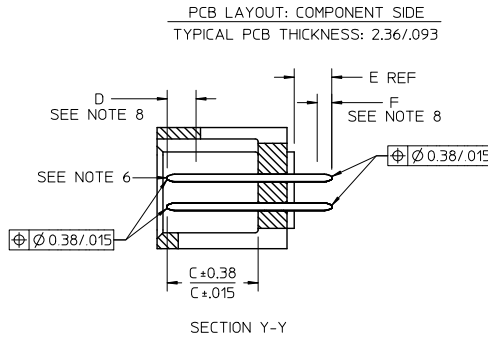
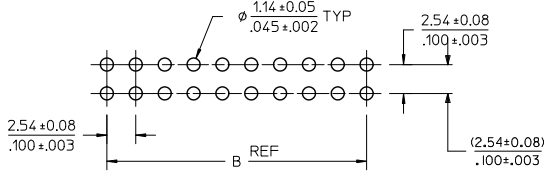
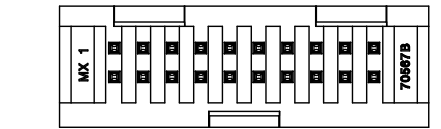
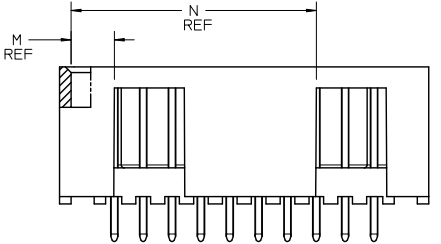
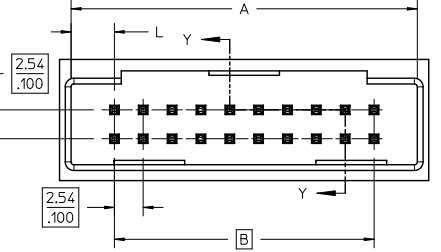
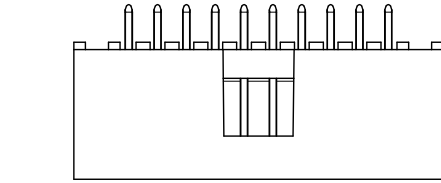
NOTES:

- MATERIAL: SHROUDED WAFER: GLASS FILLED, LIQUID CRYSTAL POLYMER, COLOR: BLACK, 94V-0. PINS: COPPER ALLOY.
- PLATING:
  - TIN 0.00381/.000150 MINIMUM TIN, OVER NICKEL UNDERPLATE OVERALL
  - 15 GOLD 0.00038/.000015 MINIMUM GOLD PLATE IN SELECTED AREA
  - 0.00191/.000075 MINIMUM TIN IN SELECTED AREA
  - OVER NICKEL UNDERPLATE OVERALL
  - 30 GOLD 0.00076/.000030 MINIMUM GOLD PLATE IN SELECTED AREA
  - 0.00191/.000075 MINIMUM TIN IN SELECTED AREA
  - OVER NICKEL UNDERPLATE OVERALL
- PRODUCT SPECIFICATION: PS-70567.
- PACKAGING: SEE CHARTS.
- MEASURE POINT FOR PLATING THICKNESS.
- PIN PUSHOUT FORCE: 4 LBS, MINIMUM IN DIRECTION INDICATED.
- FOR ILLUSTRATION PURPOSES, 20 (DUAL 10) CIRCUIT SIZE HEADER SHOWN.
- PIN SOLDERABILITY PER MOLEX SPEC, SMES-152.
- PIN WINDOW NOT AVAILABLE ON 6 OR 8 CIRCUIT SIZE.
- THIS PART CONFORMS TO CLASS B REQUIREMENTS OF COSMETIC SPECIFICATION PS-45499-002.

CKT	DIM A	DIM B	DIM L	DIM M	DIM N
06	8.43	5.08	1.68	1.68	
	3.32	.200	.066	.066	
08	10.97	7.62	1.68	1.68	
	4.32	.300	.066	.066	
10	13.51	10.16	1.68	4.22	
	5.32	.400	.066	.166	
12	16.05	12.70	1.68	4.22	
	6.32	.500	.066	.166	
14	18.59	15.24	1.68	6.76	
	7.32	.600	.066	.266	
16	21.13	17.78	1.68	6.76	
	8.32	.700	.066	.266	
18	23.67	20.32	1.68	9.30	
	9.32	.800	.066	.366	
20	26.21	22.86	1.68	19.46	
	10.32	.900	.066	.466	
22	28.75	25.40	1.68	1.68	22.00
	11.32	1.000	.066	.066	.866
24	31.29	27.94	1.68	1.68	24.54
	12.32	1.100	.066	.066	.966
26	33.83	30.48	1.68	1.68	27.08
	13.32	1.200	.066	.066	1.066
28	36.37	33.02	1.68	1.68	29.62
	14.32	1.300	.066	.066	1.166
30	38.91	35.56	1.68	1.68	32.16
	15.32	1.400	.066	.066	1.266
32	41.45	38.10	1.68	1.68	34.70
	16.32	1.500	.066	.066	1.366
34	43.99	40.64	1.68	1.68	37.24
	17.32	1.600	.066	.066	1.466
36	46.53	43.18	1.68	1.68	39.78
	18.32	1.700	.066	.066	1.566
38	49.07	45.72	1.68	1.68	42.32
	19.32	1.800	.066	.066	1.666
40	51.61	48.26	1.68	1.68	44.86
	20.32	1.900	.066	.066	1.766
42	54.15	50.80	1.68	1.68	47.40
	21.32	2.000	.066	.066	1.866
44	56.69	53.34	1.68	1.68	49.94
	22.32	2.100	.066	.066	1.966
46	59.23	55.88	1.68	1.68	52.48
	23.32	2.200	.066	.066	2.066
48	61.77	58.42	1.68	1.68	55.02
	24.32	2.300	.066	.066	2.166
50	64.31	60.96	1.68	1.68	57.56
	25.32	2.400	.066	.066	2.266
52	66.85	63.50	1.68	1.68	60.10
	26.32	2.500	.066	.066	2.366
54	69.39	66.04	1.68	1.68	62.64
	27.32	2.600	.066	.066	2.466
56	71.93	68.58	1.68	1.68	65.18
	28.32	2.700	.066	.066	2.566
58	74.47	71.12	1.68	1.68	67.72
	29.32	2.800	.066	.066	2.666
60	77.01	73.66	1.68	1.68	70.26
	30.32	2.900	.066	.066	2.766
62	79.55	76.20	1.68	1.68	72.80
	31.32	3.000	.066	.066	2.866
64	82.09	78.74	1.68	1.68	75.34
	32.32	3.100	.066	.066	2.966
66	84.63	81.28	1.68	1.68	77.88
	33.32	3.200	.066	.066	3.066
68	87.17	83.82	1.68	1.68	80.42
	34.32	3.300	.066	.066	3.166
70	89.71	86.36	1.68	1.68	82.96
	35.32	3.400	.066	.066	3.266
72	92.25	88.90	1.68	1.68	85.50
	36.32	3.500	.066	.066	3.366

CORRECT PCB HOLE SIZE EC NO: UCP2010-0294 DRAWN BY: DR. W. S. BARBA CHKD BY: J. MORGAN APPROVED BY: J. BARNETT DATE: 2010/08/02 DATE: 1988/03/10 DATE: 2010/08/02	QUALITY SYMBOLS ▽=0 ▽=0 ▽=0	GENERAL TOLERANCES (UNLESS SPECIFIED)	DIMENSION STYLE	SCALE	DESIGN UNITS	THIRD ANGLE PROJECTION
		4 PLACES ± .005 ± .005 3 PLACES ± .013 ± .010 1 PLACE ± 0.25 ± .005 ANGULAR ± 1/2°	MM/IN	4:1	INCH	☉
DRAFT WHERE APPLICABLE MUST REMAIN WITHIN DIMENSIONS		SEE TABLE	TITLE		4 SIDES SHROUDED HEADER HIGH TEMP, (2.54)/.100 GRID W/ (.064)/.025 PINS	
MATERIAL NO.		MOLEX INCORPORATED		DOCUMENT NO.		SHEET NO.
				SDA-70567-****		1 OF 5

OPTION B



NOTES:

1. MATERIAL: SHROUDED WAFER: 30% G.F. LCP, COLOR: BLACK, 94V-0. PINS: COPPER ALLOY.
2. PLATING:  
TIN - (0.00381)/0.000150 MINIMUM TIN OVER NICKEL UNDERPLATE OVERALL  
15 GOLD - (0.000381)/0.000075 MINIMUM GOLD PLATE IN SELECTED AREA  
(0.00191)/0.000075 MINIMUM TIN IN SELECTED AREA,  
OVER NICKEL UNDERPLATE OVERALL  
30 GOLD - (0.00076)/0.000030 MINIMUM GOLD PLATE IN SELECTED AREA  
(0.00191)/0.000075 MINIMUM TIN IN SELECTED AREA,  
OVER NICKEL UNDERPLATE OVERALL
3. PRODUCT SPECIFICATION: PS-70567.
4. PACKAGING: SEE CHARTS
5. PIN PUSHOUT FORCE: 4 LBS. MIN IN DIRECTION INDICATED.
6. FOR ILLUSTRATION PURPOSES, 20 (DUAL 10) CIRCUIT SIZE HEADER SHOWN.
7. PIN SOLDERABILITY PER MOLEX SPEC. SMES-152.
8. MEASURE POINT FOR PLATING THICKNESS.
9. WINDOW IS NOT AVAILABLE ON 6 CIRCUIT.
10. THIS PART CONFORMS TO CLASS B REQUIREMENTS OF COSMETIC SPECIFICATION PS-45499-002.
11. SEE SHEET 1 FOR ALL OTHER DIMENSIONS

CKT	DIM. A	DIM. B	DIM. L	DIM. M	DIM. N
06	12.70	5.08	3.81	3.81	—
08	15.24	4.62	3.81	3.81	—
10	17.78	4.06	3.81	3.81	—
12	20.32	3.50	3.81	3.81	—
14	22.86	2.94	3.81	3.81	—
16	25.40	2.38	3.81	3.81	—
18	27.94	1.82	3.81	3.81	—
20	30.48	1.26	3.81	3.81	21.59
22	33.02	0.70	3.81	3.81	8.50
24	35.56	0.14	3.81	3.81	24.13
26	38.10	0.58	3.81	3.81	26.67
28	40.64	1.02	3.81	3.81	29.21
30	43.18	1.46	3.81	3.81	31.75
32	45.72	1.90	3.81	3.81	34.29
34	48.26	2.34	3.81	3.81	36.83
36	50.80	2.78	3.81	3.81	39.37
38	53.34	3.22	3.81	3.81	41.91
40	55.88	3.66	3.81	3.81	44.45
42	58.42	4.10	3.81	3.81	47.00
44	60.96	4.54	3.81	3.81	49.53
46	63.50	4.98	3.81	3.81	52.07
48	66.04	5.42	3.81	3.81	54.61
50	68.58	5.86	3.81	3.81	57.15
52	71.12	6.30	3.81	3.81	59.69
54	73.66	6.74	3.81	3.81	62.23
56	76.20	7.18	3.81	3.81	64.77
58	78.74	7.62	3.81	3.81	67.31
60	81.28	8.06	3.81	3.81	69.85
62	83.82	8.50	3.81	3.81	72.39
64	86.36	8.94	3.81	3.81	74.93
66	88.90	9.38	3.81	3.81	77.47
68	91.44	9.82	3.81	3.81	80.01
70	93.98	10.26	3.81	3.81	82.55
72	96.52	10.70	3.81	3.81	85.09
	99.06	11.14	3.81	3.81	87.63
	101.60	11.58	3.81	3.81	90.17
	104.14	12.02	3.81	3.81	92.71
	106.68	12.46	3.81	3.81	95.25
	109.22	12.90	3.81	3.81	97.79
	111.76	13.34	3.81	3.81	100.33
	114.30	13.78	3.81	3.81	102.87
	116.84	14.22	3.81	3.81	105.41
	119.38	14.66	3.81	3.81	107.95
	121.92	15.10	3.81	3.81	110.49
	124.46	15.54	3.81	3.81	113.03
	127.00	15.98	3.81	3.81	115.57
	129.54	16.42	3.81	3.81	118.11
	132.08	16.86	3.81	3.81	120.65
	134.62	17.30	3.81	3.81	123.19
	137.16	17.74	3.81	3.81	125.73
	139.70	18.18	3.81	3.81	128.27
	142.24	18.62	3.81	3.81	130.81
	144.78	19.06	3.81	3.81	133.35
	147.32	19.50	3.81	3.81	135.89
	149.86	19.94	3.81	3.81	138.43
	152.40	20.38	3.81	3.81	140.97
	154.94	20.82	3.81	3.81	143.51
	157.48	21.26	3.81	3.81	146.05
	160.02	21.70	3.81	3.81	148.59
	162.56	22.14	3.81	3.81	151.13
	165.10	22.58	3.81	3.81	153.67
	167.64	23.02	3.81	3.81	156.21
	170.18	23.46	3.81	3.81	158.75
	172.72	23.90	3.81	3.81	161.29
	175.26	24.34	3.81	3.81	163.83
	177.80	24.78	3.81	3.81	166.37
	180.34	25.22	3.81	3.81	168.91
	182.88	25.66	3.81	3.81	171.45
	185.42	26.10	3.81	3.81	173.99
	187.96	26.54	3.81	3.81	176.53
	190.50	26.98	3.81	3.81	179.07
	193.04	27.42	3.81	3.81	181.61
	195.58	27.86	3.81	3.81	184.15
	198.12	28.30	3.81	3.81	186.69
	200.66	28.74	3.81	3.81	189.23
	203.20	29.18	3.81	3.81	191.77
	205.74	29.62	3.81	3.81	194.31
	208.28	30.06	3.81	3.81	196.85
	210.82	30.50	3.81	3.81	199.39
	213.36	30.94	3.81	3.81	201.93
	215.90	31.38	3.81	3.81	204.47
	218.44	31.82	3.81	3.81	207.01
	220.98	32.26	3.81	3.81	209.55
	223.52	32.70	3.81	3.81	212.09
	226.06	33.14	3.81	3.81	214.63
	228.60	33.58	3.81	3.81	217.17
	231.14	34.02	3.81	3.81	219.71
	233.68	34.46	3.81	3.81	222.25
	236.22	34.90	3.81	3.81	224.79
	238.76	35.34	3.81	3.81	227.33
	241.30	35.78	3.81	3.81	229.87
	243.84	36.22	3.81	3.81	232.41
	246.38	36.66	3.81	3.81	234.95
	248.92	37.10	3.81	3.81	237.49
	251.46	37.54	3.81	3.81	240.03
	254.00	37.98	3.81	3.81	242.57
	256.54	38.42	3.81	3.81	245.11
	259.08	38.86	3.81	3.81	247.65
	261.62	39.30	3.81	3.81	250.19
	264.16	39.74	3.81	3.81	252.73
	266.70	40.18	3.81	3.81	255.27
	269.24	40.62	3.81	3.81	257.81
	271.78	41.06	3.81	3.81	260.35
	274.32	41.50	3.81	3.81	262.89
	276.86	41.94	3.81	3.81	265.43
	279.40	42.38	3.81	3.81	267.97
	281.94	42.82	3.81	3.81	270.51
	284.48	43.26	3.81	3.81	273.05
	287.02	43.70	3.81	3.81	275.59
	289.56	44.14	3.81	3.81	278.13
	292.10	44.58	3.81	3.81	280.67
	294.64	45.02	3.81	3.81	283.21
	297.18	45.46	3.81	3.81	285.75
	299.72	45.90	3.81	3.81	288.29
	302.26	46.34	3.81	3.81	290.83
	304.80	46.78	3.81	3.81	293.37
	307.34	47.22	3.81	3.81	295.91
	309.88	47.66	3.81	3.81	298.45
	312.42	48.10	3.81	3.81	300.99
	314.96	48.54	3.81	3.81	303.53
	317.50	48.98	3.81	3.81	306.07
	320.04	49.42	3.81	3.81	308.61
	322.58	49.86	3.81	3.81	311.15
	325.12	50.30	3.81	3.81	313.69
	327.66	50.74	3.81	3.81	316.23
	330.20	51.18	3.81	3.81	318.77
	332.74	51.62	3.81	3.81	321.31
	335.28	52.06	3.81	3.81	323.85
	337.82	52.50	3.81	3.81	326.39
	340.36	52.94	3.81	3.81	328.93
	342.90	53.38	3.81	3.81	331.47
	345.44	53.82	3.81	3.81	334.01
	347.98	54.26	3.81	3.81	336.55
	350.52	54.70	3.81	3.81	339.09
	353.06	55.14	3.81	3.81	341.63
	355.60	55.58	3.81	3.81	344.17
	358.14	56.02	3.81	3.81	346.71
	360.68	56.46	3.81	3.81	349.25
	363.22	56.90	3.81	3.81	351.79
	365.76	57.34	3.81	3.81	354.33
	368.30	57.78	3.81	3.81	356.87
	370.84	58.22	3.81	3.81	359.41
	373.38	58.66	3.81	3.81	361.95
	375.92	59.10	3.81	3.81	364.49
	378.46	59.54	3.81	3.81	367.03
	381.00	59.98	3.81	3.81	369.57
	383.54	60.42	3.81	3.81	372.11
	386.08	60.86	3.81	3.81	374.65
	388.62	61.30	3.81	3.81	377.19
	391.16	61.74	3.81	3.81	379.73
	393.70	62.18	3.81	3.81	382.27
	396.24	62.62	3.81	3.81	384.81
	398.78	63.06	3.81	3.81	387.35
	401.32	63.50	3.81	3.81	389.89
	403.86	63.94	3.81	3.81	392.43
	406.40	64.38	3.81	3.81	394.97
	408.94	64.82	3.81	3.81	397.51
	411.48	65.26	3.81	3.81	400.05
	414.02	65.70	3.81	3.81	402.59
	416.56	66.14	3.81	3.81	405.13
	419.10	66.58	3.81	3.81	407.67
	421.64	67.02	3.81	3.81	410.21
	424.18	67.46	3.81	3.81	412.75
	426.72	67.90	3.81	3.81	415.29
	429.26	68.34	3.81	3.81	417.83
	431.80	68.78	3.81	3.81	420.37
	434.34	69.22	3.81	3.81	422.91
	436.88	69.66	3.81	3.81	425.45
	439.42	70.10	3.81	3.81	427.99
	441.96	70.54	3.81	3.81	430.53
	444.50	70.98	3.81	3.81	433.07
	447.04	71.42	3.81	3.81	435.61
	449.58	71.86	3.81	3.81	438.15
	452.12	72.30	3.81	3.81	440.69
	454.66	72.74	3.81	3.81	443.23
	457.20	73.18	3.81	3.81	445.77
	459.74	73.62	3.81	3.81	448.31
	462.28	74.06	3.81	3.81	450.85
	464.82	74.50	3.81	3.81	453.39
	467.36	74.94	3.81	3.81	455.93
	469.90	75.38	3.81	3.81	458.47
	472.44	75.82	3.81	3.81	461.01
	474.98	76.26	3.81	3.81	463.55
	477.52	76.70	3.81	3.81	466.09
	480.06	77.14	3.81	3.81	468.63
	482.60	77.58	3.81	3.81	471.17
	485.14	78.02	3.81	3.81	473.71
	487.68	78.46	3.81	3.81	476.25
	490.22	78.90	3.81	3.81	478.79
</					



Distributor of Molex Connector Corporation: Excellent Integrated System Limited

Datasheet of 0015800241 - CONN HEADER 24POS VERT TIN T/H

Contact us: sales@integrated-circuit.com Website: www.integrated-circuit.com

ENGINEERING NUMBER A-70567	MANUFACTURE RELEASE STATUS	E REF.	C .015 (0.38)	CONNECTOR END PLATING		P.C. BOARD END PLATING		PACKAGING INFORMATION PK-70873-
				TYPE	D MEAS.	TYPE	F MEAS.	
-0001/-0034	R.F.M.	.130 (3.30)	.315 (8.00)	TIN	.100 (2.54)	TIN	.050 (1.27)	0018
-0035/-0068	R.F.M.	.200 (5.08)	.315 (8.00)	TIN	.100 (2.54)	TIN	.050 (1.27)	0018
-0069/-0102	R.F.M.	.130 (3.30)	.315 (8.00)	15 GOLD	.100 (2.54)	TIN	.050 (1.27)	0018
-0103/-0136	R.F.M.	.200 (5.08)	.315 (8.00)	15 GOLD	.100 (2.54)	TIN	.050 (1.27)	0018
-0137/-0170	R.F.M.	.130 (3.30)	.315 (8.00)	30 GOLD	.100 (2.54)	TIN	.050 (1.27)	0018
-0171/-0204	R.F.M.	.200 (5.08)	.315 (8.00)	30 GOLD	.100 (2.54)	TIN	.050 (1.27)	0018

NO. OF CKTS	OPTION "A"		OPTION "A"		OPTION "A"		OPTION "A"		OPTION "A"		OPTION "A"								NO. OF CKTS
	EDP NUMBER	ENG NUMBER	EDP NUMBER	ENG NUMBER	EDP NUMBER	ENG NUMBER	EDP NUMBER	ENG NUMBER	EDP NUMBER	ENG NUMBER	EDP NUMBER	ENG NUMBER	EDP NUMBER	ENG NUMBER	EDP NUMBER	ENG NUMBER	EDP NUMBER	ENG NUMBER	
06	IS-80-0061	A-70567-0001	70567-0035	A-70567-0035	IS-80-0063	A-70567-0069	70567-0103	A-70567-0103	IS-80-0065	A-70567-0137	70567-0171	A-70567-0171							06
08	IS-80-0081	A-70567-0002	70567-0036	A-70567-0036	IS-80-0083	A-70567-0070	70567-0104	A-70567-0104	IS-80-0085	A-70567-0139	70567-0172	A-70567-0172							08
10	IS-80-0101	A-70567-0003	70567-0037	A-70567-0037	IS-80-0103	A-70567-0071	70567-0105	A-70567-0105	IS-80-0105	A-70567-0139	70567-0173	A-70567-0173							10
12	IS-80-0121	A-70567-0004	70567-0038	A-70567-0038	IS-80-0123	A-70567-0072	70567-0106	A-70567-0106	IS-80-0125	A-70567-0140	70567-0174	A-70567-0174							12
14	IS-80-0141	A-70567-0005	70567-0039	A-70567-0039	IS-80-0143	A-70567-0073	70567-0107	A-70567-0107	IS-80-0145	A-70567-0141	70567-0175	A-70567-0175							14
16	IS-80-0161	A-70567-0006	70567-0040	A-70567-0040	IS-80-0163	A-70567-0074	70567-0108	A-70567-0108	IS-80-0165	A-70567-0142	70567-0176	A-70567-0176							16
18	IS-80-0181	A-70567-0007	70567-0041	A-70567-0041	IS-80-0183	A-70567-0075	70567-0109	A-70567-0109	IS-80-0185	A-70567-0143	70567-0177	A-70567-0177							18
20	IS-80-0201	A-70567-0008	70567-0042	A-70567-0042	IS-80-0203	A-70567-0076	70567-0110	A-70567-0110	IS-80-0205	A-70567-0144	70567-0178	A-70567-0178							20
22	IS-80-0221	A-70567-0009	70567-0043	A-70567-0043	IS-80-0223	A-70567-0077	70567-0111	A-70567-0111	IS-80-0225	A-70567-0145	70567-0179	A-70567-0179							22
24	IS-80-0241	A-70567-0010	70567-0044	A-70567-0044	IS-80-0243	A-70567-0078	70567-0112	A-70567-0112	IS-80-0245	A-70567-0146	70567-0180	A-70567-0180							24
26	IS-80-0261	A-70567-0011	70567-0045	A-70567-0045	IS-80-0263	A-70567-0079	70567-0113	A-70567-0113	IS-80-0265	A-70567-0147	70567-0181	A-70567-0181							26
28	IS-80-0281	A-70567-0012	70567-0046	A-70567-0046	IS-80-0283	A-70567-0080	70567-0114	A-70567-0114	IS-80-0285	A-70567-0148	70567-0182	A-70567-0182							28
30	IS-80-0301	A-70567-0013	70567-0047	A-70567-0047	IS-80-0303	A-70567-0081	70567-0115	A-70567-0115	IS-80-0305	A-70567-0149	70567-0183	A-70567-0183							30
32	IS-80-0321	A-70567-0014	70567-0048	A-70567-0048	IS-80-0323	A-70567-0082	70567-0116	A-70567-0116	IS-80-0325	A-70567-0150	70567-0184	A-70567-0184							32
34	IS-80-0341	A-70567-0015	70567-0049	A-70567-0049	IS-80-0343	A-70567-0083	70567-0117	A-70567-0117	IS-80-0345	A-70567-0151	70567-0185	A-70567-0185							34
36	IS-80-0361	A-70567-0016	70567-0050	A-70567-0050	IS-80-0363	A-70567-0084	70567-0118	A-70567-0118	IS-80-0365	A-70567-0152	70567-0186	A-70567-0186							36
38	IS-80-0381	A-70567-0017	70567-0051	A-70567-0051	IS-80-0383	A-70567-0085	70567-0119	A-70567-0119	IS-80-0385	A-70567-0153	70567-0187	A-70567-0187							38
40	IS-80-0401	A-70567-0018	70567-0052	A-70567-0052	IS-80-0403	A-70567-0086	70567-0120	A-70567-0120	IS-80-0405	A-70567-0154	70567-0188	A-70567-0188							40
42	IS-80-0421	A-70567-0019	70567-0053	A-70567-0053	IS-80-0423	A-70567-0087	70567-0121	A-70567-0121	IS-80-0425	A-70567-0155	70567-0189	A-70567-0189							42
44	IS-80-0441	A-70567-0020	70567-0054	A-70567-0054	IS-80-0443	A-70567-0088	70567-0122	A-70567-0122	IS-80-0445	A-70567-0156	70567-0190	A-70567-0190							44
46	IS-80-0461	A-70567-0021	70567-0055	A-70567-0055	IS-80-0463	A-70567-0089	70567-0123	A-70567-0123	IS-80-0465	A-70567-0157	70567-0191	A-70567-0191							46
48	IS-80-0481	A-70567-0022	70567-0056	A-70567-0056	IS-80-0483	A-70567-0090	70567-0124	A-70567-0124	IS-80-0485	A-70567-0158	70567-0192	A-70567-0192							48
50	IS-80-0501	A-70567-0023	70567-0057	A-70567-0057	IS-80-0503	A-70567-0091	70567-0125	A-70567-0125	IS-80-0505	A-70567-0159	70567-0193	A-70567-0193							50
52	IS-80-0521	A-70567-0024	70567-0058	A-70567-0058	IS-80-0523	A-70567-0092	70567-0126	A-70567-0126	IS-80-0525	A-70567-0160	70567-0194	A-70567-0194							52
54	IS-80-0541	A-70567-0025	70567-0059	A-70567-0059	IS-80-0543	A-70567-0093	70567-0127	A-70567-0127	IS-80-0545	A-70567-0161	70567-0195	A-70567-0195							54
56	IS-80-0561	A-70567-0026	70567-0060	A-70567-0060	IS-80-0563	A-70567-0094	70567-0128	A-70567-0128	IS-80-0565	A-70567-0162	70567-0196	A-70567-0196							56
58	IS-80-0581	A-70567-0027	70567-0061	A-70567-0061	IS-80-0583	A-70567-0095	70567-0129	A-70567-0129	IS-80-0585	A-70567-0163	70567-0197	A-70567-0197							58
60	IS-80-0601	A-70567-0028	70567-0062	A-70567-0062	IS-80-0603	A-70567-0096	70567-0130	A-70567-0130	IS-80-0605	A-70567-0164	70567-0198	A-70567-0198							60
62	IS-80-0621	A-70567-0029	70567-0063	A-70567-0063	IS-80-0623	A-70567-0097	70567-0131	A-70567-0131	IS-80-0625	A-70567-0165	70567-0199	A-70567-0199							62
64	IS-80-0641	A-70567-0030	70567-0064	A-70567-0064	IS-80-0643	A-70567-0098	70567-0132	A-70567-0132	IS-80-0645	A-70567-0166	70567-0200	A-70567-0200							64
66	IS-80-0661	A-70567-0031	70567-0065	A-70567-0065	IS-80-0663	A-70567-0099	70567-0133	A-70567-0133	IS-80-0665	A-70567-0167	70567-0201	A-70567-0201							66
68	IS-80-0681	A-70567-0032	70567-0066	A-70567-0066	IS-80-0683	A-70567-0100	70567-0134	A-70567-0134	IS-80-0685	A-70567-0168	70567-0202	A-70567-0202							68
70	IS-80-0701	A-70567-0033	70567-0067	A-70567-0067	IS-80-0703	A-70567-0101	70567-0135	A-70567-0135	IS-80-0705	A-70567-0169	70567-0203	A-70567-0203							70
72	IS-80-0721	A-70567-0034	70567-0068	A-70567-0068	IS-80-0723	A-70567-0102	70567-0136	A-70567-0136	IS-80-0725	A-70567-0170	70567-0204	A-70567-0204							72

<b>QUALITY SYMBOLS</b> ▽=0 ▽=0 ▽=0 ▽=0	<b>GENERAL TOLERANCES (UNLESS SPECIFIED)</b> mm INCH 4 PLACES ±.005 ±.010 3 PLACES ±.013 ±.010 2 PLACES ±.013 ±.010 1 PLACE ±.025 ±.010 ANGULAR ±1/2°	<b>DIMENSION STYLE</b> MM/IN DRAWN BY DATE EIK 1988/03/10 CHECKED BY DATE EIK 1988/03/10 APPROVED BY DATE MILLER 2010/03/31	<b>SCALE</b> 1:1 <b>DESIGN UNITS</b> INCH <b>THIRD ANGLE PROJECTION</b>
	<b>4 SIDES SHROUDED HEADER HIGH TEMP. (2.54) .100 GRID W/ (.064) .025 PINS</b>		
	<b>SEE TABLE</b>		
	<b>DRAFT WHERE APPLICABLE MUST REMAIN WITHIN DIMENSIONS</b>		



# Distributor of Molex Connector Corporation: Excellent Integrated System Limited

Datasheet of 0015800241 - CONN HEADER 24POS VERT TIN T/H

Contact us: sales@integrated-circuit.com Website: www.integrated-circuit.com

ENGINEERING NUMBER A-70567	MANUFACTURE RELEASE STATUS	E REF.	C .015 ± (0.38)	CONNECTOR END PLATING		P.C. BOARD END PLATING		PACKAGING INFORMATION PK-70873-
				TYPE	D MEAS.	TYPE	F MEAS.	
-0205/-0238	R.F.M.	.130 (3.30)	.315 (8.00)	TIN	.100 (2.54)	TIN	.050 (1.27)	0018
-0239/-0272	R.F.M.	.200 (5.08)	.315 (8.00)	TIN	.100 (2.54)	TIN	.050 (1.27)	0018
-0273/-0306	R.F.M.	.130 (3.30)	.315 (8.00)	15 GOLD	.100 (2.54)	TIN	.050 (1.27)	0018
-0307/-0340	R.F.M.	.200 (5.08)	.315 (8.00)	15 GOLD	.100 (2.54)	TIN	.050 (1.27)	0018
-0341/-0374	R.F.M.	.130 (3.30)	.315 (8.00)	30 GOLD	.100 (2.54)	TIN	.050 (1.27)	0018
-0375/-0408	R.F.M.	.200 (5.08)	.315 (8.00)	30 GOLD	.100 (2.54)	TIN	.050 (1.27)	0018

NO. OF CKTS	OPTION "B"	OPTION "B"	OPTION "B"	OPTION "B"	OPTION "B"	OPTION "B"	EDP NUMBER	ENG NUMBER	EDP NUMBER	ENG NUMBER	EDP NUMBER	ENG NUMBER	EDP NUMBER	ENG NUMBER	EDP NUMBER	ENG NUMBER	EDP NUMBER	ENG NUMBER	NO. OF CKTS
06	IS-80-0067	A-70567-0205	70567-0239	A-70567-0239	IS-80-0069	A-70567-0273	70567-0307	A-70567-0307	IS-80-1061	A-70567-0341	70567-0375	A-70567-0375							06
08	IS-80-0087	A-70567-0206	70567-0240	A-70567-0240	IS-80-0089	A-70567-0274	70567-0308	A-70567-0308	IS-80-1081	A-70567-0342	70567-0376	A-70567-0376							08
10	IS-80-0107	A-70567-0207	70567-0241	A-70567-0241	IS-80-0109	A-70567-0275	70567-0309	A-70567-0309	IS-80-1101	A-70567-0343	70567-0377	A-70567-0377							10
12	IS-80-0127	A-70567-0208	70567-0242	A-70567-0242	IS-80-0129	A-70567-0276	70567-0310	A-70567-0310	IS-80-1121	A-70567-0344	70567-0378	A-70567-0378							12
14	IS-80-0147	A-70567-0209	70567-0243	A-70567-0243	IS-80-0149	A-70567-0277	70567-0311	A-70567-0311	IS-80-1141	A-70567-0345	70567-0379	A-70567-0379							14
16	IS-80-0167	A-70567-0210	70567-0244	A-70567-0244	IS-80-0169	A-70567-0278	70567-0312	A-70567-0312	IS-80-1161	A-70567-0346	70567-0380	A-70567-0380							16
18	IS-80-0187	A-70567-0211	70567-0245	A-70567-0245	IS-80-0189	A-70567-0279	70567-0313	A-70567-0313	IS-80-1181	A-70567-0347	70567-0381	A-70567-0381							18
20	IS-80-0207	A-70567-0212	70567-0246	A-70567-0246	IS-80-0209	A-70567-0280	70567-0314	A-70567-0314	IS-80-1201	A-70567-0348	70567-0382	A-70567-0382							20
22	IS-80-0227	A-70567-0213	70567-0247	A-70567-0247	IS-80-0229	A-70567-0281	70567-0315	A-70567-0315	IS-80-1221	A-70567-0349	70567-0383	A-70567-0383							22
24	IS-80-0247	A-70567-0214	70567-0248	A-70567-0248	IS-80-0249	A-70567-0282	70567-0316	A-70567-0316	IS-80-1241	A-70567-0350	70567-0384	A-70567-0384							24
26	IS-80-0267	A-70567-0215	70567-0249	A-70567-0249	IS-80-0269	A-70567-0283	70567-0317	A-70567-0317	IS-80-1261	A-70567-0351	70567-0385	A-70567-0385							26
28	IS-80-0287	A-70567-0216	70567-0250	A-70567-0250	IS-80-0289	A-70567-0284	70567-0318	A-70567-0318	IS-80-1281	A-70567-0352	70567-0386	A-70567-0386							28
30	IS-80-0307	A-70567-0217	70567-0251	A-70567-0251	IS-80-0309	A-70567-0285	70567-0319	A-70567-0319	IS-80-1301	A-70567-0353	70567-0387	A-70567-0387							30
32	IS-80-0327	A-70567-0218	70567-0252	A-70567-0252	IS-80-0329	A-70567-0286	70567-0320	A-70567-0320	IS-80-1321	A-70567-0354	70567-0388	A-70567-0388							32
34	IS-80-0347	A-70567-0219	70567-0253	A-70567-0253	IS-80-0349	A-70567-0287	70567-0321	A-70567-0321	IS-80-1341	A-70567-0355	70567-0389	A-70567-0389							34
36	IS-80-0367	A-70567-0220	70567-0254	A-70567-0254	IS-80-0369	A-70567-0288	70567-0322	A-70567-0322	IS-80-1361	A-70567-0356	70567-0390	A-70567-0390							36
38	IS-80-0387	A-70567-0221	70567-0255	A-70567-0255	IS-80-0389	A-70567-0289	70567-0323	A-70567-0323	IS-80-1381	A-70567-0357	70567-0391	A-70567-0391							38
40	IS-80-0407	A-70567-0222	70567-0256	A-70567-0256	IS-80-0409	A-70567-0290	70567-0324	A-70567-0324	IS-80-1401	A-70567-0358	70567-0392	A-70567-0392							40
42	IS-80-0427	A-70567-0223	70567-0257	A-70567-0257	IS-80-0429	A-70567-0291	70567-0325	A-70567-0325	IS-80-1421	A-70567-0359	70567-0393	A-70567-0393							42
44	IS-80-0447	A-70567-0224	70567-0258	A-70567-0258	IS-80-0449	A-70567-0292	70567-0326	A-70567-0326	IS-80-1441	A-70567-0360	70567-0394	A-70567-0394							44
46	IS-80-0467	A-70567-0225	70567-0259	A-70567-0259	IS-80-0469	A-70567-0293	70567-0327	A-70567-0327	IS-80-1461	A-70567-0361	70567-0395	A-70567-0395							46
48	IS-80-0487	A-70567-0226	70567-0260	A-70567-0260	IS-80-0489	A-70567-0294	70567-0328	A-70567-0328	IS-80-1481	A-70567-0362	70567-0396	A-70567-0396							48
50	IS-80-0507	A-70567-0227	70567-0261	A-70567-0261	IS-80-0509	A-70567-0295	70567-0329	A-70567-0329	IS-80-1501	A-70567-0363	70567-0397	A-70567-0397							50
52	IS-80-0527	A-70567-0228	70567-0262	A-70567-0262	IS-80-0529	A-70567-0296	70567-0330	A-70567-0330	IS-80-1521	A-70567-0364	70567-0398	A-70567-0398							52
54	IS-80-0547	A-70567-0229	70567-0263	A-70567-0263	IS-80-0549	A-70567-0297	70567-0331	A-70567-0331	IS-80-1541	A-70567-0365	70567-0399	A-70567-0399							54
56	IS-80-0567	A-70567-0230	70567-0264	A-70567-0264	IS-80-0569	A-70567-0298	70567-0332	A-70567-0332	IS-80-1561	A-70567-0366	70567-0400	A-70567-0400							56
58	IS-80-0587	A-70567-0231	70567-0265	A-70567-0265	IS-80-0589	A-70567-0299	70567-0333	A-70567-0333	IS-80-1581	A-70567-0367	70567-0401	A-70567-0401							58
60	IS-80-0607	A-70567-0232	70567-0266	A-70567-0266	IS-80-0609	A-70567-0300	70567-0334	A-70567-0334	IS-80-1601	A-70567-0368	70567-0402	A-70567-0402							60
62	IS-80-0627	A-70567-0233	70567-0267	A-70567-0267	IS-80-0629	A-70567-0301	70567-0335	A-70567-0335	IS-80-1621	A-70567-0369	70567-0403	A-70567-0403							62
64	IS-80-0647	A-70567-0234	70567-0268	A-70567-0268	IS-80-0649	A-70567-0302	70567-0336	A-70567-0336	IS-80-1641	A-70567-0370	70567-0404	A-70567-0404							64
66	IS-80-0667	A-70567-0235	70567-0269	A-70567-0269	IS-80-0669	A-70567-0303	70567-0337	A-70567-0337	IS-80-1661	A-70567-0371	70567-0405	A-70567-0405							66
68	IS-80-0687	A-70567-0236	70567-0270	A-70567-0270	IS-80-0689	A-70567-0304	70567-0338	A-70567-0338	IS-80-1681	A-70567-0372	70567-0406	A-70567-0406							68
70	IS-80-0707	A-70567-0237	70567-0271	A-70567-0271	IS-80-0709	A-70567-0305	70567-0339	A-70567-0339	IS-80-1701	A-70567-0373	70567-0407	A-70567-0407							70
72	IS-80-0727	A-70567-0238	70567-0272	A-70567-0272	IS-80-0729	A-70567-0306	70567-0340	A-70567-0340	IS-80-1721	A-70567-0374	70567-0408	A-70567-0408							72

<b>SEE SHEETS 1 &amp; 2</b> REC. NO. 157201-024 DRAWN BY BARBARA ZOU/08/02 CHECKED BY CHEN/DIMAS/18/08/02 APPROVED BY J DATE 18/08/02	<b>QUALITY SYMBOLS</b> ∇=0 ∇=0 ∇=0	<b>GENERAL TOLERANCES (UNLESS SPECIFIED)</b> DIMENSIONS IN MM AND INCH 4 PLACES ±.005 3 PLACES ±.005 2 PLACES ±.010 1 PLACE ±.025 ANGULAR ±1/2°	<b>DIMENSION STYLE</b> MM/IN DRAWN BY DATE TITLE EIK 1988/03/10 CHECKED BY DATE EIK 1988/03/10 APPROVED BY DATE MILLER 2010/03/31	<b>SCALE</b> 1:1 <b>DESIGN UNITS</b> INCH <b>THIRD ANGLE PROJECTION</b>	<b>4 SIDES SHROUDED HEADER</b> <b>HIGH TEMP (2.54)/100</b> <b>GRID W/ (0.64)/.025 PINS</b> <b>MOLEX INCORPORATED</b>	
	<b>DRAFT WHERE APPLICABLE MUST REMAIN WITHIN DIMENSIONS</b>		<b>MATERIAL NO.</b> SEE TABLE	<b>DOCUMENT NO.</b> SDA-70567-****	<b>SHEET NO.</b> 4 OF 5	
	<b>THIS DRAWING CONTAINS INFORMATION THAT IS PROPRIETARY TO MOLEX INCORPORATED AND SHOULD NOT BE USED WITHOUT WRITTEN PERMISSION</b>					
	<b>INCORPORATED AND SHOULD NOT BE USED WITHOUT WRITTEN PERMISSION</b>					

