

## Excellent Integrated System Limited

Stocking Distributor

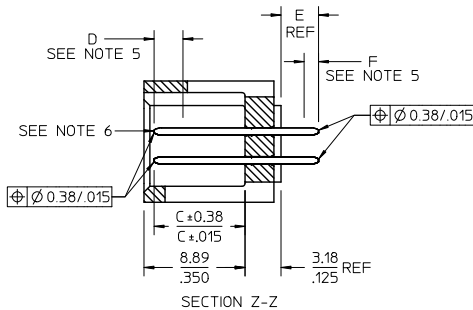
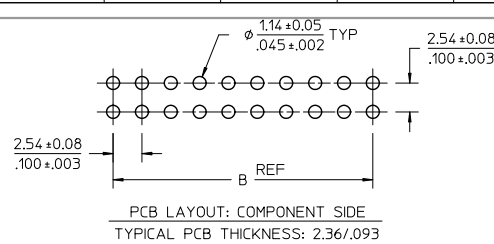
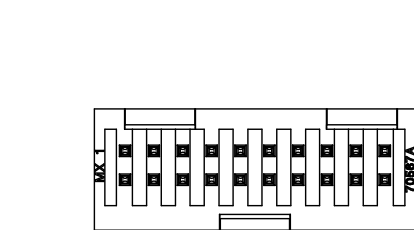
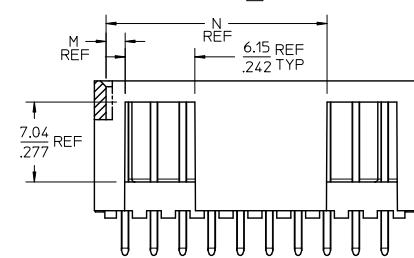
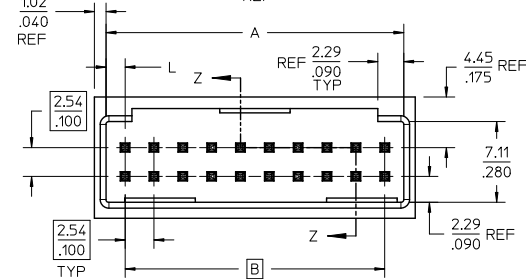
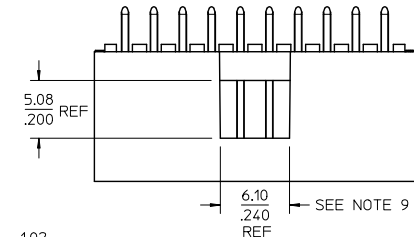
Click to view price, real time Inventory, Delivery & Lifecycle Information:

[Molex Connector Corporation](#)  
[0015800465](#)

For any questions, you can email us directly:

[sales@integrated-circuit.com](mailto:sales@integrated-circuit.com)

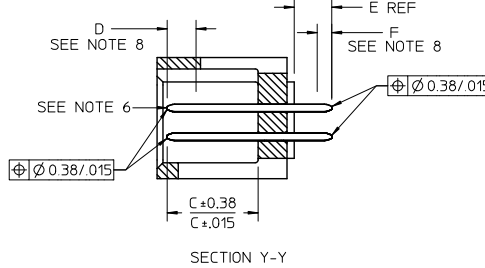
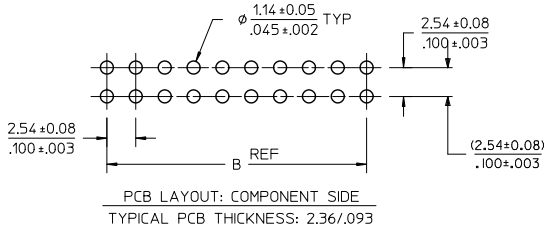
**OPTION A**



- NOTES:**
1. MATERIAL: SHROUDED WAFER: GLASS FILLED, LIQUID CRYSTAL POLYMER, COLOR: BLACK, 94V-0. PINS: COPPER ALLOY.
  2. PLATING:  
TIN 0.000381/0.000150 MINIMUM TIN, OVER NICKEL UNDERPLATE OVERALL  
15 GOLD 0.00038/0.00015 MINIMUM GOLD PLATE IN SELECTED AREA  
0.00191/0.000075 MINIMUM TIN IN SELECTED AREA  
OVER NICKEL UNDERPLATE OVERALL  
30 GOLD 0.00076/0.00030 MINIMUM GOLD PLATE IN SELECTED AREA  
0.00191/0.000075 MINIMUM TIN IN SELECTED AREA  
OVER NICKEL UNDERPLATE OVERALL
  3. PRODUCT SPECIFICATION: PS-70567.
  4. PACKAGING: SEE CHARTS.
  5. MEASURE POINT FOR PLATING THICKNESS.
  6. PIN PUSHOUT FORCE: 4 LBS. MINIMUM IN DIRECTION INDICATED.
  7. FOR ILLUSTRATION PURPOSES, 20 (DUAL 10) CIRCUIT SIZE HEADER SHOWN.
  8. PIN SOLDERABILITY PER MOLEX SPEC, SMES-152.
  9. WINDOW NOT AVAILABLE ON 6 OR 8 CIRCUIT SIZE.
  10. THIS PART CONFORMS TO CLASS B REQUIREMENTS OF COSMETIC SPECIFICATION PS-45499-002.

CKT	DIM A	DIM B	DIM L	DIM M	DIM N
06	8.43 3.32	5.08 2.00	1.68 0.66	1.68 0.66	
08	10.97 4.92	7.62 3.00	1.68 0.66	1.68 0.66	
10	13.51 5.32	10.16 4.00	1.68 0.66	1.68 0.66	
12	16.05 6.32	12.70 5.00	1.68 0.66	4.22 1.66	
14	18.59 7.32	15.24 6.00	1.68 0.66	6.76 2.66	
16	21.13 8.32	17.78 7.00	1.68 0.66	6.76 3.66	
18	23.67 9.32	20.32 8.00	1.68 0.66	9.30 3.66	
20	26.21 10.32	22.86 9.00	1.68 0.66	1.68 0.66	19.46 7.66
22	28.75 11.32	25.40 10.00	1.68 0.66	1.68 0.66	22.00 8.66
24	31.29 12.32	27.94 1.00	1.68 0.66	1.68 0.66	24.54 9.66
26	33.83 1.332	30.48 1.200	1.68 0.66	1.68 0.66	27.08 10.66
28	36.37 1.434	33.02 1.300	1.68 0.66	1.68 0.66	29.62 11.66
30	38.91 1.532	35.56 1.400	1.68 0.66	1.68 0.66	32.16 12.66
32	41.45 1.632	38.10 1.500	1.68 0.66	1.68 0.66	34.70 13.66
34	43.99 1.732	40.64 1.600	1.68 0.66	1.68 0.66	37.24 14.66
36	46.53 1.832	43.18 1.700	1.68 0.66	1.68 0.66	39.78 15.66
38	49.07 1.932	45.72 1.800	1.68 0.66	1.68 0.66	42.32 16.66
40	51.61 2.032	48.26 1.900	1.68 0.66	1.68 0.66	44.86 17.66
42	54.15 2.132	50.80 2.000	1.68 0.66	1.68 0.66	47.40 18.66
44	56.69 2.232	53.34 2.100	1.68 0.66	1.68 0.66	49.94 19.66
46	59.23 2.332	55.88 2.200	1.68 0.66	1.68 0.66	52.48 20.66
48	61.77 2.432	58.42 2.300	1.68 0.66	1.68 0.66	55.02 21.66
50	64.31 2.532	60.96 2.400	1.68 0.66	1.68 0.66	57.56 22.66
52	66.85 2.632	63.50 2.500	1.68 0.66	1.68 0.66	60.10 23.66
54	69.39 2.732	66.04 2.600	1.68 0.66	1.68 0.66	62.64 24.66
56	71.93 2.832	68.58 2.700	1.68 0.66	1.68 0.66	65.18 25.66
58	74.47 2.932	71.12 2.800	1.68 0.66	1.68 0.66	67.72 26.66
60	77.01 3.032	73.66 2.900	1.68 0.66	1.68 0.66	70.26 27.66
62	79.55 3.132	76.20 3.000	1.68 0.66	1.68 0.66	72.80 28.66
64	82.09 2.232	78.74 3.100	1.68 0.66	1.68 0.66	75.34 29.66
66	84.63 3.332	81.28 3.200	1.68 0.66	1.68 0.66	77.88 30.66
68	87.17 3.432	83.82 3.300	1.68 0.66	1.68 0.66	80.42 31.66
70	89.71 3.532	86.36 3.400	1.68 0.66	1.68 0.66	82.96 32.66
72	92.25 3.632	88.90 3.500	1.68 0.66	1.68 0.66	85.50 33.66

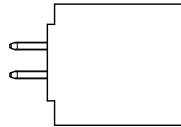
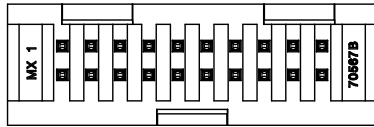
OPTION B



NOTES:

1. MATERIAL: SHROUDED WAFER: 30% G.F. LCP. COLOR: BLACK, 94V-0. PINS: COPPER ALLOY.
2. PLATING:  
TIN - (0.00381)/.000150 MINIMUM TIN OVER NICKEL UNDERPLATE OVERALL  
15 GOLD - (0.000381)/.000075 MINIMUM GOLD PLATE IN SELECTED AREA  
(0.00191)/.000075 MINIMUM TIN IN SELECTED AREA,  
OVER NICKEL UNDERPLATE OVERALL  
30 GOLD - (0.00076)/.000030 MINIMUM GOLD PLATE IN SELECTED AREA  
(0.00191)/.000075 MINIMUM TIN IN SELECTED AREA,  
OVER NICKEL UNDERPLATE OVERALL
3. PRODUCT SPECIFICATION: PS-70567.
4. PACKAGING: SEE CHARTS
5. PIN PUSHOUT FORCE: 4 LBS. MIN IN DIRECTION INDICATED.
6. FOR ILLUSTRATION PURPOSES, 20 (DUAL 10) CIRCUIT SIZE HEADER SHOWN.
7. PIN SOLDERABILITY PER MOLEX SPEC. SMES-152.
8. MEASURE POINT FOR PLATING THICKNESS.
9. WINDOW IS NOT AVAILABLE ON 6 CIRCUIT.
10. THIS PART CONFORMS TO CLASS B REQUIREMENTS OF COSMETIC SPECIFICATION PS-45499-002.
11. SEE SHEET 1 FOR ALL OTHER DIMENSIONS

CKT	DIM. A	DIM. B	DIM. L	DIM. M	DIM. N
06	12.70	5.08	3.81	3.81	—
08	15.24	7.62	3.81	3.81	—
10	17.78	10.16	3.81	6.35	—
12	20.32	12.70	3.81	6.35	—
14	22.86	15.24	3.81	8.89	—
16	25.40	17.78	3.81	8.89	—
18	27.94	20.32	3.81	11.43	—
20	30.48	22.86	3.81	11.43	21.59
22	33.02	25.40	3.81	3.81	24.13
24	35.56	27.94	3.81	3.81	26.67
26	38.10	30.48	3.81	3.81	29.21
28	40.64	33.02	3.81	3.81	31.75
30	43.18	35.56	3.81	3.81	34.29
32	45.72	38.10	3.81	3.81	36.83
34	48.26	40.64	3.81	3.81	39.37
36	50.80	43.18	3.81	3.81	41.91
38	53.34	45.72	3.81	3.81	44.45
40	55.88	48.26	3.81	3.81	46.99
42	58.42	50.80	3.81	3.81	49.53
44	60.96	53.34	3.81	3.81	52.07
46	63.50	55.88	3.81	3.81	54.61
48	66.04	58.42	3.81	3.81	57.15
50	68.58	60.96	3.81	3.81	59.69
52	71.12	63.50	3.81	3.81	62.23
54	73.66	66.04	3.81	3.81	64.77
56	76.20	68.58	3.81	3.81	67.31
58	78.74	71.12	3.81	3.81	69.85
60	81.28	73.66	3.81	3.81	72.39
62	83.82	76.20	3.81	3.81	74.93
64	86.36	78.74	3.81	3.81	77.47
66	88.90	81.28	3.81	3.81	80.01
68	91.44	83.82	3.81	3.81	82.55
70	93.98	86.36	3.81	3.81	85.09
72	96.52	88.90	3.81	3.81	87.63
	3.800	3.500	.150	.150	3.450



CORRECT PCB HOLE SIZE		QUALITY SYMBOLS		GENERAL TOLERANCES (UNLESS SPECIFIED)		DIMENSION STYLE		SCALE		DESIGN UNITS		THIRD ANGLE PROJECTION	
2010/08/02		2010/08/02				MM/IN		4:1		INCH			
2010/08/02		2010/08/02				DRAWN BY DATE		TITLE					
2010/08/02		2010/08/02				EIK 1988/03/10		4 SIDES SHROUDED HEADER					
2010/08/02		2010/08/02				CHECKED BY DATE		HIGH TEMP. (2.54)/.100					
2010/08/02		2010/08/02				EIK 1988/03/10		GRID W/ (0.64)/.025 PINS					
2010/08/02		2010/08/02				APPROVED BY DATE		MOLEX					
2010/08/02		2010/08/02				SMILLER 2010/03/31		MOLEX INCORPORATED					
2010/08/02		2010/08/02				MATERIAL NO.		DOCUMENT NO.					
2010/08/02		2010/08/02				SEE TABLE		SDA-70567-****					
2010/08/02		2010/08/02				SIZE		SHEET NO.					
2010/08/02		2010/08/02				C		THIS DRAWING CONTAINS INFORMATION THAT IS PROPRIETARY TO MOLEX INCORPORATED AND SHOULD NOT BE USED WITHOUT WRITTEN PERMISSION					

	NO. OF CKTS	OPTION "A"		OPTION "A"		OPTION "A"		OPTION "A"		OPTION "A"		OPTION "A"			NO. OF CKTS
		EDP NUMBER	ENG NUMBER	EDP NUMBER	ENG NUMBER	EDP NUMBER	ENG NUMBER	EDP NUMBER	ENG NUMBER	EDP NUMBER	ENG NUMBER	EDP NUMBER	ENG NUMBER		
H	06	IS-80-0061	A-T0567-0001	T0567-0035	A-T0567-0035	IS-80-0063	A-T0567-0069	T0567-0103	A-T0567-0103	IS-80-0065	A-T0567-0137	T0567-0171	A-T0567-0171	06	
	08	IS-80-0081	A-T0567-0002	T0567-0036	A-T0567-0036	IS-80-0083	A-T0567-0070	T0567-0104	A-T0567-0104	IS-80-0085	A-T0567-0138	T0567-0172	A-T0567-0172	08	
	10	IS-80-0101	A-T0567-0003	T0567-0037	A-T0567-0037	IS-80-0103	A-T0567-0071	T0567-0105	A-T0567-0105	IS-80-0105	A-T0567-0139	T0567-0173	A-T0567-0173	10	
	12	IS-80-0121	A-T0567-0004	T0567-0038	A-T0567-0038	IS-80-0123	A-T0567-0072	T0567-0106	A-T0567-0106	IS-80-0125	A-T0567-0140	T0567-0174	A-T0567-0174	12	
	14	IS-80-0141	A-T0567-0005	T0567-0039	A-T0567-0039	IS-80-0143	A-T0567-0073	T0567-0107	A-T0567-0107	IS-80-0145	A-T0567-0141	T0567-0175	A-T0567-0175	14	
	16	IS-80-0161	A-T0567-0006	T0567-0040	A-T0567-0040	IS-80-0163	A-T0567-0074	T0567-0108	A-T0567-0108	IS-80-0165	A-T0567-0142	T0567-0176	A-T0567-0176	16	
	18	IS-80-0181	A-T0567-0007	T0567-0041	A-T0567-0041	IS-80-0183	A-T0567-0075	T0567-0109	A-T0567-0109	IS-80-0185	A-T0567-0143	T0567-0177	A-T0567-0177	18	
	20	IS-80-0201	A-T0567-0008	T0567-0042	A-T0567-0042	IS-80-0203	A-T0567-0076	T0567-0110	A-T0567-0110	IS-80-0205	A-T0567-0144	T0567-0178	A-T0567-0178	20	
	22	IS-80-0221	A-T0567-0009	T0567-0043	A-T0567-0043	IS-80-0223	A-T0567-0077	T0567-0111	A-T0567-0111	IS-80-0225	A-T0567-0145	T0567-0179	A-T0567-0179	22	
	24	IS-80-0241	A-T0567-0010	T0567-0044	A-T0567-0044	IS-80-0243	A-T0567-0078	T0567-0112	A-T0567-0112	IS-80-0245	A-T0567-0146	T0567-0180	A-T0567-0180	24	
D	26	IS-80-0261	A-T0567-0011	T0567-0045	A-T0567-0045	IS-80-0263	A-T0567-0079	T0567-0113	A-T0567-0113	IS-80-0265	A-T0567-0147	T0567-0181	A-T0567-0181	26	
	28	IS-80-0281	A-T0567-0012	T0567-0046	A-T0567-0046	IS-80-0283	A-T0567-0080	T0567-0114	A-T0567-0114	IS-80-0285	A-T0567-0148	T0567-0182	A-T0567-0182	28	
	30	IS-80-0301	A-T0567-0013	T0567-0047	A-T0567-0047	IS-80-0303	A-T0567-0081	T0567-0115	A-T0567-0115	IS-80-0305	A-T0567-0149	T0567-0183	A-T0567-0183	30	
	32	IS-80-0321	A-T0567-0014	T0567-0048	A-T0567-0048	IS-80-0323	A-T0567-0082	T0567-0116	A-T0567-0116	IS-80-0325	A-T0567-0150	T0567-0184	A-T0567-0184	32	
	34	IS-80-0341	A-T0567-0015	T0567-0049	A-T0567-0049	IS-80-0343	A-T0567-0083	T0567-0117	A-T0567-0117	IS-80-0345	A-T0567-0151	T0567-0185	A-T0567-0185	34	
	36	IS-80-0361	A-T0567-0016	T0567-0050	A-T0567-0050	IS-80-0363	A-T0567-0084	T0567-0118	A-T0567-0118	IS-80-0365	A-T0567-0152	T0567-0186	A-T0567-0186	36	
	38	IS-80-0381	A-T0567-0017	T0567-0051	A-T0567-0051	IS-80-0383	A-T0567-0085	T0567-0119	A-T0567-0119	IS-80-0385	A-T0567-0153	T0567-0187	A-T0567-0187	38	
	40	IS-80-0401	A-T0567-0018	T0567-0052	A-T0567-0052	IS-80-0403	A-T0567-0086	T0567-0120	A-T0567-0120	IS-80-0405	A-T0567-0154	T0567-0188	A-T0567-0188	40	
	42	IS-80-0421	A-T0567-0019	T0567-0053	A-T0567-0053	IS-80-0423	A-T0567-0087	T0567-0121	A-T0567-0121	IS-80-0425	A-T0567-0155	T0567-0189	A-T0567-0189	42	
	44	IS-80-0441	A-T0567-0020	T0567-0054	A-T0567-0054	IS-80-0443	A-T0567-0088	T0567-0122	A-T0567-0122	IS-80-0445	A-T0567-0156	T0567-0190	A-T0567-0190	44	
E	46	IS-80-0461	A-T0567-0021	T0567-0055	A-T0567-0055	IS-80-0463	A-T0567-0089	T0567-0123	A-T0567-0123	IS-80-0465	A-T0567-0157	T0567-0191	A-T0567-0191	46	
	48	IS-80-0481	A-T0567-0022	T0567-0056	A-T0567-0056	IS-80-0483	A-T0567-0090	T0567-0124	A-T0567-0124	IS-80-0485	A-T0567-0158	T0567-0192	A-T0567-0192	48	
	50	IS-80-0501	A-T0567-0023	T0567-0057	A-T0567-0057	IS-80-0503	A-T0567-0091	T0567-0125	A-T0567-0125	IS-80-0505	A-T0567-0159	T0567-0193	A-T0567-0193	50	
	52	IS-80-0521	A-T0567-0024	T0567-0058	A-T0567-0058	IS-80-0523	A-T0567-0092	T0567-0126	A-T0567-0126	IS-80-0525	A-T0567-0160	T0567-0194	A-T0567-0194	52	
	54	IS-80-0541	A-T0567-0025	T0567-0059	A-T0567-0059	IS-80-0543	A-T0567-0093	T0567-0127	A-T0567-0127	IS-80-0545	A-T0567-0161	T0567-0195	A-T0567-0195	54	
	56	IS-80-0561	A-T0567-0026	T0567-0060	A-T0567-0060	IS-80-0563	A-T0567-0094	T0567-0128	A-T0567-0128	IS-80-0565	A-T0567-0162	T0567-0196	A-T0567-0196	56	
	58	IS-80-0581	A-T0567-0027	T0567-0061	A-T0567-0061	IS-80-0583	A-T0567-0095	T0567-0129	A-T0567-0129	IS-80-0585	A-T0567-0163	T0567-0197	A-T0567-0197	58	
	60	IS-80-0601	A-T0567-0028	T0567-0062	A-T0567-0062	IS-80-0603	A-T0567-0096	T0567-0130	A-T0567-0130	IS-80-0605	A-T0567-0164	T0567-0198	A-T0567-0198	60	
	62	IS-80-0621	A-T0567-0029	T0567-0063	A-T0567-0063	IS-80-0623	A-T0567-0097	T0567-0131	A-T0567-0131	IS-80-0625	A-T0567-0165	T0567-0199	A-T0567-0199	62	
	64	IS-80-0641	A-T0567-0030	T0567-0064	A-T0567-0064	IS-80-0643	A-T0567-0098	T0567-0132	A-T0567-0132	IS-80-0645	A-T0567-0166	T0567-0200	A-T0567-0200	64	
C	66	IS-80-0661	A-T0567-0031	T0567-0065	A-T0567-0065	IS-80-0663	A-T0567-0099	T0567-0133	A-T0567-0133	IS-80-0665	A-T0567-0167	T0567-0201	A-T0567-0201	66	
	68	IS-80-0681	A-T0567-0032	T0567-0066	A-T0567-0066	IS-80-0683	A-T0567-0100	T0567-0134	A-T0567-0134	IS-80-0685	A-T0567-0168	T0567-0202	A-T0567-0202	68	
	70	IS-80-0701	A-T0567-0033	T0567-0067	A-T0567-0067	IS-80-0703	A-T0567-0101	T0567-0135	A-T0567-0135	IS-80-0705	A-T0567-0169	T0567-0203	A-T0567-0203	70	
	72	IS-80-0721	A-T0567-0034	T0567-0068	A-T0567-0068	IS-80-0723	A-T0567-0102	T0567-0136	A-T0567-0136	IS-80-0725	A-T0567-0170	T0567-0204	A-T0567-0204	72	

B	<div><div>SEE SHEETS 1 &amp; 2</div><div>EC NO. JEF0101-0294 210/08/02</div><div>CHOKKIBABAN 1988/03/10</div><div>APPAHARANAKS 2010/03/05</div></div>															B														
	<div><div><div>QUALITY SYMBOLS</div><div>GENERAL TOLERANCES (UNLESS SPECIFIED)</div><table><thead><tr><th></th><th>mm</th><th>INCH</th></tr></thead><tbody><tr><td>▽=0</td><td>4 PLACES ± 0.15</td><td>± 0.005</td></tr><tr><td>▽=0</td><td>3 PLACES ± 0.15</td><td>± 0.010</td></tr><tr><td>▽=0</td><td>2 PLACES ± 0.25</td><td>± 0.010</td></tr><tr><td>▽=0</td><td>1 PLACE ± 0.25</td><td>± 0.010</td></tr></tbody></table><div>ANGULAR ± 1/2°</div></div><div><div>DRAFT WHERE APPLICABLE</div><div>JUST REPAIR</div><div>WITHIN DIMENSIONS</div></div></div> <div><div>DIMENSION STYLE</div><div>MM/IN</div><div>DRAWN BY DATE</div><div>1988/03/10</div><div>CHECKED BY DATE</div><div>1988/03/10</div><div>APPROVED BY DATE</div><div>2010/03/31</div><div>SHILLER</div></div> <div><div>SCALE</div><div>1:1</div><div>DESIGN UNITS</div><div>INCH</div><div>PROJECTION</div><div>THIRD ANGLE</div></div> <div><div>TITLE</div><div>SIDES SHROUDED HEADER</div><div>HIGH TEMP. (2.54)/100</div><div>GRID W/ (0.64)/0.025 PINS</div><div>MOLEX INCORPORATED</div></div>																	mm	INCH	▽=0	4 PLACES ± 0.15	± 0.005	▽=0	3 PLACES ± 0.15	± 0.010	▽=0	2 PLACES ± 0.25	± 0.010	▽=0	1 PLACE ± 0.25
	mm	INCH																												
▽=0	4 PLACES ± 0.15	± 0.005																												
▽=0	3 PLACES ± 0.15	± 0.010																												
▽=0	2 PLACES ± 0.25	± 0.010																												
▽=0	1 PLACE ± 0.25	± 0.010																												
A	<div><div>MATERIAL NO.</div><div>SDA-70567-*****</div></div> <div><div>DOCUMENT NO.</div><div>SDA-70567-*****</div></div> <div><div>SHEET NO.</div><div>3 OF 5</div></div> <div>THIS DRAWING CONTAINS INFORMATION THAT IS PROPRIETARY TO MOLEX INCORPORATED AND SHOULD NOT BE USED WITHOUT WRITTEN PERMISSION</div>																													
It_frame_0_p_Ash_T																														

NO. OF CATS	OPTION "B"		OPTION "B"		OPTION "B"		OPTION "B"		OPTION "B"		OPTION "B"		NO. OF CATS		
	EDP NUMBER	ENG NUMBER	EDP NUMBER	ENG NUMBER	EDP NUMBER	ENG NUMBER	EDP NUMBER	ENG NUMBER	EDP NUMBER	ENG NUMBER	EDP NUMBER	ENG NUMBER			
H	06	A-10567-0067	A-10567-0205	A-10567-0239	A-10567-0239	A-10567-0069	A-10567-0273	A-10567-0307	A-10567-0307	A-10567-0061	A-10567-0341	A-10567-0375	A-10567-0375	06	
	08	A-10567-0087	A-10567-0206	A-10567-0240	A-10567-0240	A-10567-0089	A-10567-0274	A-10567-0308	A-10567-0308	A-10567-0081	A-10567-0342	A-10567-0376	A-10567-0376	08	
	10	A-10567-0107	A-10567-0207	A-10567-0241	A-10567-0241	A-10567-0109	A-10567-0275	A-10567-0309	A-10567-0309	A-10567-0101	A-10567-0343	A-10567-0377	A-10567-0377	10	
	12	A-10567-0127	A-10567-0208	A-10567-0242	A-10567-0242	A-10567-0129	A-10567-0276	A-10567-0310	A-10567-0310	A-10567-0121	A-10567-0344	A-10567-0378	A-10567-0378	12	
	14	A-10567-0147	A-10567-0209	A-10567-0243	A-10567-0243	A-10567-0149	A-10567-0277	A-10567-0311	A-10567-0311	A-10567-0141	A-10567-0345	A-10567-0379	A-10567-0379	14	
	16	A-10567-0167	A-10567-0210	A-10567-0244	A-10567-0244	A-10567-0169	A-10567-0278	A-10567-0312	A-10567-0312	A-10567-0161	A-10567-0346	A-10567-0380	A-10567-0380	16	
	18	A-10567-0187	A-10567-0211	A-10567-0245	A-10567-0245	A-10567-0189	A-10567-0279	A-10567-0313	A-10567-0313	A-10567-0181	A-10567-0347	A-10567-0381	A-10567-0381	18	
	20	A-10567-0207	A-10567-0212	A-10567-0246	A-10567-0246	A-10567-0209	A-10567-0280	A-10567-0314	A-10567-0314	A-10567-0201	A-10567-0348	A-10567-0382	A-10567-0382	20	
	22	A-10567-0227	A-10567-0213	A-10567-0247	A-10567-0247	A-10567-0229	A-10567-0281	A-10567-0315	A-10567-0315	A-10567-0221	A-10567-0349	A-10567-0383	A-10567-0383	22	
	24	A-10567-0247	A-10567-0214	A-10567-0248	A-10567-0248	A-10567-0249	A-10567-0282	A-10567-0316	A-10567-0316	A-10567-0241	A-10567-0350	A-10567-0384	A-10567-0384	24	
G	26	A-10567-0267	A-10567-0215	A-10567-0249	A-10567-0249	A-10567-0269	A-10567-0283	A-10567-0317	A-10567-0317	A-10567-0261	A-10567-0351	A-10567-0385	A-10567-0385	26	
	28	A-10567-0287	A-10567-0216	A-10567-0250	A-10567-0250	A-10567-0289	A-10567-0284	A-10567-0318	A-10567-0318	A-10567-0281	A-10567-0352	A-10567-0386	A-10567-0386	28	
	30	A-10567-0307	A-10567-0217	A-10567-0251	A-10567-0251	A-10567-0309	A-10567-0285	A-10567-0319	A-10567-0319	A-10567-0301	A-10567-0353	A-10567-0387	A-10567-0387	30	
	32	A-10567-0327	A-10567-0218	A-10567-0252	A-10567-0252	A-10567-0329	A-10567-0286	A-10567-0320	A-10567-0320	A-10567-0321	A-10567-0354	A-10567-0388	A-10567-0388	32	
	34	A-10567-0347	A-10567-0219	A-10567-0253	A-10567-0253	A-10567-0349	A-10567-0287	A-10567-0321	A-10567-0321	A-10567-0341	A-10567-0355	A-10567-0389	A-10567-0389	34	
	36	A-10567-0367	A-10567-0220	A-10567-0254	A-10567-0254	A-10567-0369	A-10567-0288	A-10567-0322	A-10567-0322	A-10567-0361	A-10567-0356	A-10567-0390	A-10567-0390	36	
	38	A-10567-0387	A-10567-0221	A-10567-0255	A-10567-0255	A-10567-0389	A-10567-0289	A-10567-0323	A-10567-0323	A-10567-0381	A-10567-0357	A-10567-0391	A-10567-0391	38	
	40	A-10567-0407	A-10567-0222	A-10567-0256	A-10567-0256	A-10567-0409	A-10567-0290	A-10567-0324	A-10567-0324	A-10567-0401	A-10567-0358	A-10567-0392	A-10567-0392	40	
	42	A-10567-0427	A-10567-0223	A-10567-0257	A-10567-0257	A-10567-0429	A-10567-0291	A-10567-0325	A-10567-0325	A-10567-0421	A-10567-0359	A-10567-0393	A-10567-0393	42	
	44	A-10567-0447	A-10567-0224	A-10567-0258	A-10567-0258	A-10567-0449	A-10567-0292	A-10567-0326	A-10567-0326	A-10567-0441	A-10567-0360	A-10567-0394	A-10567-0394	44	
F	46	A-10567-0467	A-10567-0225	A-10567-0259	A-10567-0259	A-10567-0469	A-10567-0293	A-10567-0327	A-10567-0327	A-10567-0461	A-10567-0361	A-10567-0395	A-10567-0395	46	
	48	A-10567-0487	A-10567-0226	A-10567-0260	A-10567-0260	A-10567-0489	A-10567-0294	A-10567-0328	A-10567-0328	A-10567-0481	A-10567-0362	A-10567-0396	A-10567-0396	48	
	50	A-10567-0507	A-10567-0227	A-10567-0261	A-10567-0261	A-10567-0509	A-10567-0295	A-10567-0329	A-10567-0329	A-10567-0501	A-10567-0363	A-10567-0397	A-10567-0397	50	
	52	A-10567-0527	A-10567-0228	A-10567-0262	A-10567-0262	A-10567-0529	A-10567-0296	A-10567-0330	A-10567-0330	A-10567-0521	A-10567-0364	A-10567-0398	A-10567-0398	52	
	54	A-10567-0547	A-10567-0229	A-10567-0263	A-10567-0263	A-10567-0549	A-10567-0297	A-10567-0331	A-10567-0331	A-10567-0541	A-10567-0365	A-10567-0399	A-10567-0399	54	
	56	A-10567-0567	A-10567-0230	A-10567-0264	A-10567-0264	A-10567-0569	A-10567-0298	A-10567-0332	A-10567-0332	A-10567-0561	A-10567-0366	A-10567-0400	A-10567-0400	56	
	58	A-10567-0587	A-10567-0231	A-10567-0265	A-10567-0265	A-10567-0589	A-10567-0299	A-10567-0333	A-10567-0333	A-10567-0581	A-10567-0367	A-10567-0401	A-10567-0401	58	
	60	A-10567-0607	A-10567-0232	A-10567-0266	A-10567-0266	A-10567-0609	A-10567-0300	A-10567-0334	A-10567-0334	A-10567-0601	A-10567-0368	A-10567-0402	A-10567-0402	60	
	62	A-10567-0627	A-10567-0233	A-10567-0267	A-10567-0267	A-10567-0629	A-10567-0301	A-10567-0335	A-10567-0335	A-10567-0621	A-10567-0369	A-10567-0403	A-10567-0403	62	
	64	A-10567-0647	A-10567-0234	A-10567-0268	A-10567-0268	A-10567-0649	A-10567-0302	A-10567-0336	A-10567-0336	A-10567-0641	A-10567-0370	A-10567-0404	A-10567-0404	64	
D	66	A-10567-0667	A-10567-0235	A-10567-0269	A-10567-0269	A-10567-0669	A-10567-0303	A-10567-0337	A-10567-0337	A-10567-0661	A-10567-0371	A-10567-0405	A-10567-0405	66	
	68	A-10567-0687	A-10567-0236	A-10567-0270	A-10567-0270	A-10567-0689	A-10567-0304	A-10567-0338	A-10567-0338	A-10567-0681	A-10567-0372	A-10567-0406	A-10567-0406	68	
	70	A-10567-0707	A-10567-0237	A-10567-0271	A-10567-0271	A-10567-0709	A-10567-0305	A-10567-0339	A-10567-0339	A-10567-0701	A-10567-0373	A-10567-0407	A-10567-0407	70	
	72	A-10567-0727	A-10567-0238	A-10567-0272	A-10567-0272	A-10567-0729	A-10567-0306	A-10567-0340	A-10567-0340	A-10567-0721	A-10567-0374	A-10567-0408	A-10567-0408	72	
	C														

1b. Inmate D.P. AM, T Rev. F. 2009/06/17	19	18	17	16	15	14	13	12	11	10	9	8	7	6	5	4	3	2	1
---	----	----	----	----	----	----	----	----	----	----	---	---	---	---	---	---	---	---	---

