

Excellent Integrated System Limited

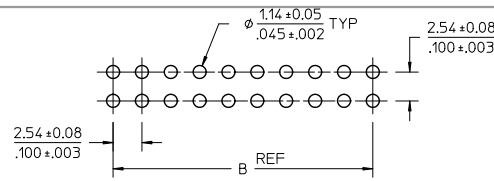
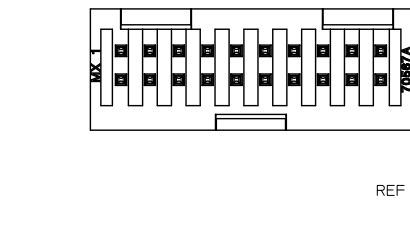
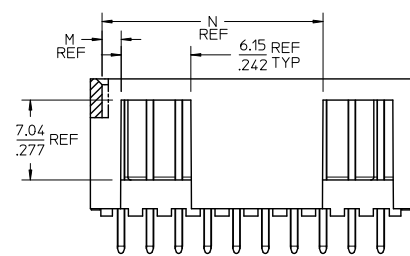
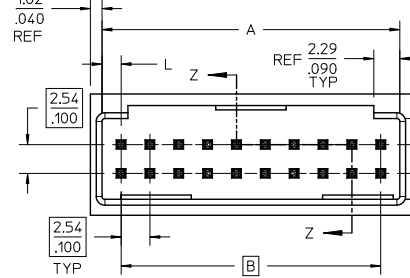
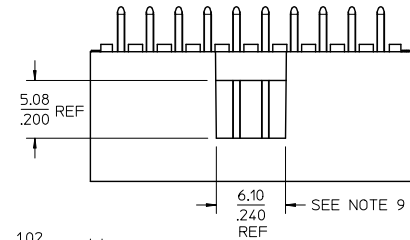
Stocking Distributor

Click to view price, real time Inventory, Delivery & Lifecycle Information:

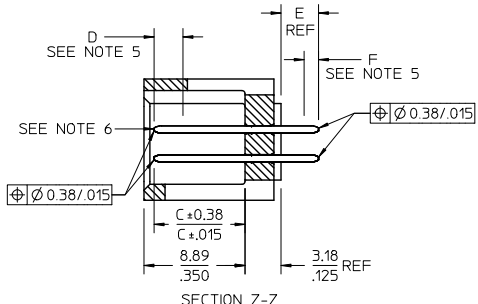
[Molex Connector Corporation](#)
[0015801121](#)

For any questions, you can email us directly:
sales@integrated-circuit.com

OPTION A



PCB LAYOUT: COMPONENT SIDE
TYPICAL PCB THICKNESS: 2.367/.093

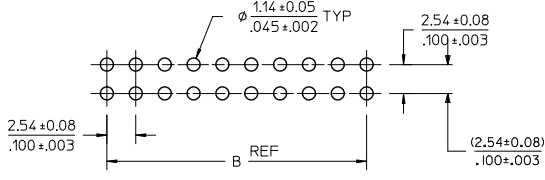
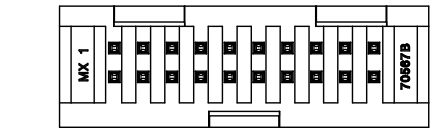
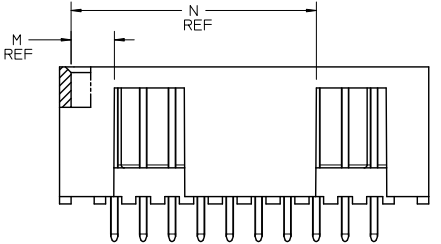
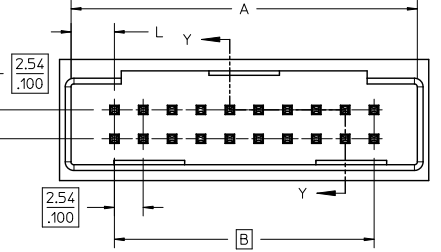
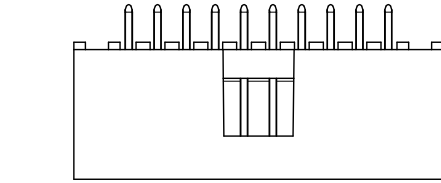


- NOTES:
1. MATERIAL: SHROUDED WAFER: GLASS FILLED, LIQUID CRYSTAL POLYMER, COLOR: BLACK, 94V-0. PINS: COPPER ALLOY.
 2. PLATING:
 - TIN 0.00381/.000150 MINIMUM TIN, OVER NICKEL UNDERPLATE OVERALL
 - 15 GOLD 0.00038/.000015 MINIMUM GOLD PLATE IN SELECTED AREA
 - 0.00191/.000075 MINIMUM TIN IN SELECTED AREA
 - OVER NICKEL UNDERPLATE OVERALL
 - 30 GOLD 0.00076/.000030 MINIMUM GOLD PLATE IN SELECTED AREA
 - 0.00191/.000075 MINIMUM TIN IN SELECTED AREA
 - OVER NICKEL UNDERPLATE OVERALL
 3. PRODUCT SPECIFICATION: PS-70567.
 4. PACKAGING: SEE CHARTS.
 5. MEASURE POINT FOR PLATING THICKNESS.
 6. PIN PUSHOUT FORCE: 4 LBS, MINIMUM IN DIRECTION INDICATED.
 7. FOR ILLUSTRATION PURPOSES, 20 (DUAL 10) CIRCUIT SIZE HEADER SHOWN.
 8. PIN SOLDERABILITY PER MOLEX SPEC, SMES-152.
 9. WINDOW NOT AVAILABLE ON 6 OR 8 CIRCUIT SIZE.
 10. THIS PART CONFORMS TO CLASS B REQUIREMENTS OF COSMETIC SPECIFICATION PS-45499-002.

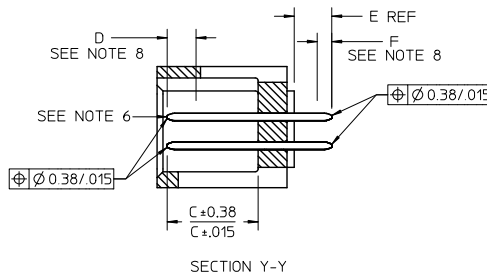
| CKT | DIM A | DIM B | DIM L | DIM M | DIM N |
|-----|-------|-------|-------|-------|-------|
| 06 | 8.43 | 5.08 | 1.68 | 1.68 | |
| | 3.32 | .200 | .066 | .066 | |
| 08 | 10.97 | 7.62 | 1.68 | 1.68 | |
| | 4.32 | .300 | .066 | .066 | |
| 10 | 13.51 | 10.16 | 1.68 | 4.22 | |
| | 5.32 | .400 | .066 | .166 | |
| 12 | 16.05 | 12.70 | 1.68 | 4.22 | |
| | 6.32 | .500 | .066 | .166 | |
| 14 | 18.59 | 15.24 | 1.68 | 6.76 | |
| | 7.32 | .600 | .066 | .266 | |
| 16 | 21.13 | 17.78 | 1.68 | 6.76 | |
| | 8.32 | .700 | .066 | .266 | |
| 18 | 23.67 | 20.32 | 1.68 | 9.30 | |
| | 9.32 | .800 | .066 | .366 | |
| 20 | 26.21 | 22.86 | 1.68 | 19.46 | |
| | 10.32 | .900 | .066 | .466 | |
| 22 | 28.75 | 25.40 | 1.68 | 1.68 | 22.00 |
| | 11.32 | 1.000 | .066 | .066 | .866 |
| 24 | 31.29 | 27.94 | 1.68 | 1.68 | 24.54 |
| | 12.32 | 1.100 | .066 | .066 | .966 |
| 26 | 33.83 | 30.48 | 1.68 | 1.68 | 27.08 |
| | 13.32 | 1.200 | .066 | .066 | 1.066 |
| 28 | 36.37 | 33.02 | 1.68 | 1.68 | 29.62 |
| | 14.32 | 1.300 | .066 | .066 | 1.166 |
| 30 | 38.91 | 35.56 | 1.68 | 1.68 | 32.16 |
| | 15.32 | 1.400 | .066 | .066 | 1.266 |
| 32 | 41.45 | 38.10 | 1.68 | 1.68 | 34.70 |
| | 16.32 | 1.500 | .066 | .066 | 1.366 |
| 34 | 43.99 | 40.64 | 1.68 | 1.68 | 37.24 |
| | 17.32 | 1.600 | .066 | .066 | 1.466 |
| 36 | 46.53 | 43.18 | 1.68 | 1.68 | 39.78 |
| | 18.32 | 1.700 | .066 | .066 | 1.566 |
| 38 | 49.07 | 45.72 | 1.68 | 1.68 | 42.32 |
| | 19.32 | 1.800 | .066 | .066 | 1.666 |
| 40 | 51.61 | 48.26 | 1.68 | 1.68 | 44.86 |
| | 20.32 | 1.900 | .066 | .066 | 1.766 |
| 42 | 54.15 | 50.80 | 1.68 | 1.68 | 47.40 |
| | 21.32 | 2.000 | .066 | .066 | 1.866 |
| 44 | 56.69 | 53.34 | 1.68 | 1.68 | 49.94 |
| | 22.32 | 2.100 | .066 | .066 | 1.966 |
| 46 | 59.23 | 55.88 | 1.68 | 1.68 | 52.48 |
| | 23.32 | 2.200 | .066 | .066 | 2.066 |
| 48 | 61.77 | 58.42 | 1.68 | 1.68 | 55.02 |
| | 24.32 | 2.300 | .066 | .066 | 2.166 |
| 50 | 64.31 | 60.96 | 1.68 | 1.68 | 57.56 |
| | 25.32 | 2.400 | .066 | .066 | 2.266 |
| 52 | 66.85 | 63.50 | 1.68 | 1.68 | 60.10 |
| | 26.32 | 2.500 | .066 | .066 | 2.366 |
| 54 | 69.39 | 66.04 | 1.68 | 1.68 | 62.64 |
| | 27.32 | 2.600 | .066 | .066 | 2.466 |
| 56 | 71.93 | 68.58 | 1.68 | 1.68 | 65.18 |
| | 28.32 | 2.700 | .066 | .066 | 2.566 |
| 58 | 74.47 | 71.12 | 1.68 | 1.68 | 67.72 |
| | 29.32 | 2.800 | .066 | .066 | 2.666 |
| 60 | 77.01 | 73.66 | 1.68 | 1.68 | 70.26 |
| | 30.32 | 2.900 | .066 | .066 | 2.766 |
| 62 | 79.55 | 76.20 | 1.68 | 1.68 | 72.80 |
| | 31.32 | 3.000 | .066 | .066 | 2.866 |
| 64 | 82.09 | 78.74 | 1.68 | 1.68 | 75.34 |
| | 32.32 | 3.100 | .066 | .066 | 2.966 |
| 66 | 84.63 | 81.28 | 1.68 | 1.68 | 77.88 |
| | 33.32 | 3.200 | .066 | .066 | 3.066 |
| 68 | 87.17 | 83.82 | 1.68 | 1.68 | 80.42 |
| | 34.32 | 3.300 | .066 | .066 | 3.166 |
| 70 | 89.71 | 86.36 | 1.68 | 1.68 | 82.96 |
| | 35.32 | 3.400 | .066 | .066 | 3.266 |
| 72 | 92.25 | 88.90 | 1.68 | 1.68 | 85.50 |
| | 36.32 | 3.500 | .066 | .066 | 3.366 |

| | | | | | | |
|---|--------------------------------------|---|---|--|--|------------------------|
| CORRECT PCB HOLE SIZE EC NO: UCP2010-0294 DRAWN BY: DR. W. S. BARBA CHKD BY: J. MORGAN APPROVED BY: J. BAKKUS | QUALITY SYMBOLS ▽=0 ▽=0 ▽=0 | GENERAL TOLERANCES (UNLESS SPECIFIED) | DIMENSION STYLE | SCALE | DESIGN UNITS | THIRD ANGLE PROJECTION |
| | | 4 PLACES ± .005 ± .005 3 PLACES ± .013 ± .010 1 PLACE ± 0.25 ± .005 ANGULAR ± 1/2° | MM/IN | 4:1 | INCH | ☉ |
| REV | DESCRIPTION | DRAFT WHERE APPLICABLE MUST REMAIN WITHIN DIMENSIONS | DRAWN BY: EIK CHECKED BY: EIK APPROVED BY: SMILLER | DATE: 1988/03/10 DATE: 1988/03/10 DATE: 2010/03/31 | TITLE: 4 SIDES SHROUDED HEADER HIGH TEMP, (2.54)/.100 GRID W/ (.064)/.025 PINS | |
| | | | MATERIAL NO. SEE TABLE | MOLEX SDA-70567-**** | | SHEET NO. 1 OF 5 |
| | | | THIS DRAWING CONTAINS INFORMATION THAT IS PROPRIETARY TO MOLEX INCORPORATED AND SHOULD NOT BE USED WITHOUT WRITTEN PERMISSION | | | |

OPTION B



PCB LAYOUT: COMPONENT SIDE
TYPICAL PCB THICKNESS: 2.36/.093



NOTES:

- MATERIAL: SHROUDED WAFER: 30% G.F. LCP, COLOR: BLACK, 94V-0. PINS: COPPER ALLOY.
- PLATING:
 - TIN - (0.00381)/.000150 MINIMUM TIN OVER NICKEL UNDERPLATE OVERALL
 - 15 GOLD - (0.000381)/.000075 MINIMUM GOLD PLATE IN SELECTED AREA (0.00191)/.000075 MINIMUM TIN IN SELECTED AREA, OVER NICKEL UNDERPLATE OVERALL
 - 30 GOLD - (0.00076)/.000030 MINIMUM GOLD PLATE IN SELECTED AREA (0.00191)/.000075 MINIMUM TIN IN SELECTED AREA, OVER NICKEL UNDERPLATE OVERALL
- PRODUCT SPECIFICATION: PS-70567.
- PACKAGING: SEE CHARTS
- PIN PUSHOUT FORCE: 4 LBS. MIN IN DIRECTION INDICATED.
- FOR ILLUSTRATION PURPOSES, 20 (DUAL 10) CIRCUIT SIZE HEADER SHOWN.
- PIN SOLDERABILITY PER MOLEX SPEC. SMES-152.
- MEASURE POINT FOR PLATING THICKNESS.
- WINDOW IS NOT AVAILABLE ON 6 CIRCUIT.
- THIS PART CONFORMS TO CLASS B REQUIREMENTS OF COSMETIC SPECIFICATION PS-45499-002.
- SEE SHEET 1 FOR ALL OTHER DIMENSIONS

| CKT | DIM. A | DIM. B | DIM. L | DIM. M | DIM. N |
|-----|--------|--------|--------|--------|--------|
| 06 | 12.70 | 5.08 | 3.81 | 3.81 | --- |
| 08 | 15.24 | 5.08 | 3.81 | 3.81 | --- |
| 10 | 17.78 | 5.08 | 3.81 | 3.81 | --- |
| 12 | 20.32 | 5.08 | 3.81 | 3.81 | --- |
| 14 | 22.86 | 5.08 | 3.81 | 3.81 | --- |
| 16 | 25.40 | 5.08 | 3.81 | 3.81 | --- |
| 18 | 27.94 | 5.08 | 3.81 | 3.81 | --- |
| 20 | 30.48 | 5.08 | 3.81 | 3.81 | --- |
| 22 | 33.02 | 5.08 | 3.81 | 3.81 | --- |
| 24 | 35.56 | 5.08 | 3.81 | 3.81 | --- |
| 26 | 38.10 | 5.08 | 3.81 | 3.81 | --- |
| 28 | 40.64 | 5.08 | 3.81 | 3.81 | --- |
| 30 | 43.18 | 5.08 | 3.81 | 3.81 | --- |
| 32 | 45.72 | 5.08 | 3.81 | 3.81 | --- |
| 34 | 48.26 | 5.08 | 3.81 | 3.81 | --- |
| 36 | 50.80 | 5.08 | 3.81 | 3.81 | --- |
| 38 | 53.34 | 5.08 | 3.81 | 3.81 | --- |
| 40 | 55.88 | 5.08 | 3.81 | 3.81 | --- |
| 42 | 58.42 | 5.08 | 3.81 | 3.81 | --- |
| 44 | 60.96 | 5.08 | 3.81 | 3.81 | --- |
| 46 | 63.50 | 5.08 | 3.81 | 3.81 | --- |
| 48 | 66.04 | 5.08 | 3.81 | 3.81 | --- |
| 50 | 68.58 | 5.08 | 3.81 | 3.81 | --- |
| 52 | 71.12 | 5.08 | 3.81 | 3.81 | --- |
| 54 | 73.66 | 5.08 | 3.81 | 3.81 | --- |
| 56 | 76.20 | 5.08 | 3.81 | 3.81 | --- |
| 58 | 78.74 | 5.08 | 3.81 | 3.81 | --- |
| 60 | 81.28 | 5.08 | 3.81 | 3.81 | --- |
| 62 | 83.82 | 5.08 | 3.81 | 3.81 | --- |
| 64 | 86.36 | 5.08 | 3.81 | 3.81 | --- |
| 66 | 88.90 | 5.08 | 3.81 | 3.81 | --- |
| 68 | 91.44 | 5.08 | 3.81 | 3.81 | --- |
| 70 | 93.98 | 5.08 | 3.81 | 3.81 | --- |
| 72 | 96.52 | 5.08 | 3.81 | 3.81 | --- |

| | | | | |
|--|--------------------------------------|---|--|--|
| CORRECT PCB HOLE SIZE EC NO: UCP2011-0294 DRAWN BY: BARBARA 2010/08/02 CHKD BY: MORGAN 1988/03/10 APPROVED BY: BENJAMIN 2010/08/03 | QUALITY SYMBOLS ∇=0 ∇=0 ∇=0 | GENERAL TOLERANCES (UNLESS SPECIFIED) mm INCH 4 PLACES ± --- ± --- 3 PLACES ± --- ± .005 2 PLACES ± 0.13 ± .010 1 PLACE ± 0.25 ± --- ANGULAR ± 1/2° | DIMENSION STYLE MM/IN DRAWN BY: EIK DATE: 1988/03/10 CHECKED BY: EIK DATE: 1988/03/10 APPROVED BY: MILLER DATE: 2010/03/31 | SCALE: 4:1 DESIGN UNITS: INCH THIRD ANGLE PROJECTION |
| | | DRAFT WHERE APPLICABLE MUST REMAIN WITHIN DIMENSIONS | SEE TABLE | MOLEX INCORPORATED |
| | | MATERIAL NO. | DOCUMENT NO. SDA-70567-**** | SHEET NO. 2 OF 5 |
| | | THIS DRAWING CONTAINS INFORMATION THAT IS PROPRIETARY TO MOLEX INCORPORATED AND SHOULD NOT BE USED WITHOUT WRITTEN PERMISSION | | |



| ENGINEERING NUMBER A-70567 | MANUFACTURE RELEASE STATUS | E REF. | C .015 (0.38) | CONNECTOR END PLATING | | P.C. BOARD END PLATING | | PACKAGING INFORMATION PK-70873- |
|-------------------------------|----------------------------|----------------|----------------|-----------------------|----------------|------------------------|----------------|---------------------------------|
| | | | | TYPE | D MEAS. | TYPE | F MEAS. | |
| -0001/-0034 | R.F.M. | .130 (3.30) | .315 (8.00) | TIN | .100 (2.54) | TIN | .050 (1.27) | 0018 |
| -0035/-0068 | R.F.M. | .200 (5.08) | .315 (8.00) | TIN | .100 (2.54) | TIN | .050 (1.27) | 0018 |
| -0069/-0102 | R.F.M. | .130 (3.30) | .315 (8.00) | 15 GOLD | .100 (2.54) | TIN | .050 (1.27) | 0018 |
| -0103/-0136 | R.F.M. | .200 (5.08) | .315 (8.00) | 15 GOLD | .100 (2.54) | TIN | .050 (1.27) | 0018 |
| -0137/-0170 | R.F.M. | .130 (3.30) | .315 (8.00) | 30 GOLD | .100 (2.54) | TIN | .050 (1.27) | 0018 |
| -0171/-0204 | R.F.M. | .200 (5.08) | .315 (8.00) | 30 GOLD | .100 (2.54) | TIN | .050 (1.27) | 0018 |

| NO. OF CKTS | OPTION "A" | OPTION "A" | OPTION "A" | OPTION "A" | OPTION "A" | OPTION "A" | OPTION "A" | OPTION "A" | OPTION "A" | OPTION "A" | OPTION "A" | OPTION "A" | OPTION "A" | OPTION "A" | OPTION "A" | OPTION "A" | OPTION "A" | OPTION "A" | OPTION "A" | NO. OF CKTS |
|-------------|------------|--------------|------------|--------------|------------|--------------|------------|--------------|------------|--------------|------------|--------------|------------|------------|------------|------------|------------|------------|------------|-------------|
| 06 | IS-80-0061 | A-70567-0001 | 70567-0035 | A-70567-0035 | IS-80-0063 | A-70567-0069 | 70567-0103 | A-70567-0103 | IS-80-0065 | A-70567-0137 | 70567-0171 | A-70567-0171 | 06 | | | | | | | |
| 08 | IS-80-0081 | A-70567-0002 | 70567-0036 | A-70567-0036 | IS-80-0083 | A-70567-0070 | 70567-0104 | A-70567-0104 | IS-80-0085 | A-70567-0138 | 70567-0172 | A-70567-0172 | 08 | | | | | | | |
| 10 | IS-80-0101 | A-70567-0003 | 70567-0037 | A-70567-0037 | IS-80-0103 | A-70567-0071 | 70567-0105 | A-70567-0105 | IS-80-0105 | A-70567-0139 | 70567-0173 | A-70567-0173 | 10 | | | | | | | |
| 12 | IS-80-0121 | A-70567-0004 | 70567-0038 | A-70567-0038 | IS-80-0123 | A-70567-0072 | 70567-0106 | A-70567-0106 | IS-80-0125 | A-70567-0140 | 70567-0174 | A-70567-0174 | 12 | | | | | | | |
| 14 | IS-80-0141 | A-70567-0005 | 70567-0039 | A-70567-0039 | IS-80-0143 | A-70567-0073 | 70567-0107 | A-70567-0107 | IS-80-0145 | A-70567-0141 | 70567-0175 | A-70567-0175 | 14 | | | | | | | |
| 16 | IS-80-0161 | A-70567-0006 | 70567-0040 | A-70567-0040 | IS-80-0163 | A-70567-0074 | 70567-0108 | A-70567-0108 | IS-80-0165 | A-70567-0142 | 70567-0176 | A-70567-0176 | 16 | | | | | | | |
| 18 | IS-80-0181 | A-70567-0007 | 70567-0041 | A-70567-0041 | IS-80-0183 | A-70567-0075 | 70567-0109 | A-70567-0109 | IS-80-0185 | A-70567-0143 | 70567-0177 | A-70567-0177 | 18 | | | | | | | |
| 20 | IS-80-0201 | A-70567-0008 | 70567-0042 | A-70567-0042 | IS-80-0203 | A-70567-0076 | 70567-0110 | A-70567-0110 | IS-80-0205 | A-70567-0144 | 70567-0178 | A-70567-0178 | 20 | | | | | | | |
| 22 | IS-80-0221 | A-70567-0009 | 70567-0043 | A-70567-0043 | IS-80-0223 | A-70567-0077 | 70567-0111 | A-70567-0111 | IS-80-0225 | A-70567-0145 | 70567-0179 | A-70567-0179 | 22 | | | | | | | |
| 24 | IS-80-0241 | A-70567-0010 | 70567-0044 | A-70567-0044 | IS-80-0243 | A-70567-0078 | 70567-0112 | A-70567-0112 | IS-80-0245 | A-70567-0146 | 70567-0180 | A-70567-0180 | 24 | | | | | | | |
| 26 | IS-80-0261 | A-70567-0011 | 70567-0045 | A-70567-0045 | IS-80-0263 | A-70567-0079 | 70567-0113 | A-70567-0113 | IS-80-0265 | A-70567-0147 | 70567-0181 | A-70567-0181 | 26 | | | | | | | |
| 28 | IS-80-0281 | A-70567-0012 | 70567-0046 | A-70567-0046 | IS-80-0283 | A-70567-0080 | 70567-0114 | A-70567-0114 | IS-80-0285 | A-70567-0148 | 70567-0182 | A-70567-0182 | 28 | | | | | | | |
| 30 | IS-80-0301 | A-70567-0013 | 70567-0047 | A-70567-0047 | IS-80-0303 | A-70567-0081 | 70567-0115 | A-70567-0115 | IS-80-0305 | A-70567-0149 | 70567-0183 | A-70567-0183 | 30 | | | | | | | |
| 32 | IS-80-0321 | A-70567-0014 | 70567-0048 | A-70567-0048 | IS-80-0323 | A-70567-0082 | 70567-0116 | A-70567-0116 | IS-80-0325 | A-70567-0150 | 70567-0184 | A-70567-0184 | 32 | | | | | | | |
| 34 | IS-80-0341 | A-70567-0015 | 70567-0049 | A-70567-0049 | IS-80-0343 | A-70567-0083 | 70567-0117 | A-70567-0117 | IS-80-0345 | A-70567-0151 | 70567-0185 | A-70567-0185 | 34 | | | | | | | |
| 36 | IS-80-0361 | A-70567-0016 | 70567-0050 | A-70567-0050 | IS-80-0363 | A-70567-0084 | 70567-0118 | A-70567-0118 | IS-80-0365 | A-70567-0152 | 70567-0186 | A-70567-0186 | 36 | | | | | | | |
| 38 | IS-80-0381 | A-70567-0017 | 70567-0051 | A-70567-0051 | IS-80-0383 | A-70567-0085 | 70567-0119 | A-70567-0119 | IS-80-0385 | A-70567-0153 | 70567-0187 | A-70567-0187 | 38 | | | | | | | |
| 40 | IS-80-0401 | A-70567-0018 | 70567-0052 | A-70567-0052 | IS-80-0403 | A-70567-0086 | 70567-0120 | A-70567-0120 | IS-80-0405 | A-70567-0154 | 70567-0188 | A-70567-0188 | 40 | | | | | | | |
| 42 | IS-80-0421 | A-70567-0019 | 70567-0053 | A-70567-0053 | IS-80-0423 | A-70567-0087 | 70567-0121 | A-70567-0121 | IS-80-0425 | A-70567-0155 | 70567-0189 | A-70567-0189 | 42 | | | | | | | |
| 44 | IS-80-0441 | A-70567-0020 | 70567-0054 | A-70567-0054 | IS-80-0443 | A-70567-0088 | 70567-0122 | A-70567-0122 | IS-80-0445 | A-70567-0156 | 70567-0190 | A-70567-0190 | 44 | | | | | | | |
| 46 | IS-80-0461 | A-70567-0021 | 70567-0055 | A-70567-0055 | IS-80-0463 | A-70567-0089 | 70567-0123 | A-70567-0123 | IS-80-0465 | A-70567-0157 | 70567-0191 | A-70567-0191 | 46 | | | | | | | |
| 48 | IS-80-0481 | A-70567-0022 | 70567-0056 | A-70567-0056 | IS-80-0483 | A-70567-0090 | 70567-0124 | A-70567-0124 | IS-80-0485 | A-70567-0158 | 70567-0192 | A-70567-0192 | 48 | | | | | | | |
| 50 | IS-80-0501 | A-70567-0023 | 70567-0057 | A-70567-0057 | IS-80-0503 | A-70567-0091 | 70567-0125 | A-70567-0125 | IS-80-0505 | A-70567-0159 | 70567-0193 | A-70567-0193 | 50 | | | | | | | |
| 52 | IS-80-0521 | A-70567-0024 | 70567-0058 | A-70567-0058 | IS-80-0523 | A-70567-0092 | 70567-0126 | A-70567-0126 | IS-80-0525 | A-70567-0160 | 70567-0194 | A-70567-0194 | 52 | | | | | | | |
| 54 | IS-80-0541 | A-70567-0025 | 70567-0059 | A-70567-0059 | IS-80-0543 | A-70567-0093 | 70567-0127 | A-70567-0127 | IS-80-0545 | A-70567-0161 | 70567-0195 | A-70567-0195 | 54 | | | | | | | |
| 56 | IS-80-0561 | A-70567-0026 | 70567-0060 | A-70567-0060 | IS-80-0563 | A-70567-0094 | 70567-0128 | A-70567-0128 | IS-80-0565 | A-70567-0162 | 70567-0196 | A-70567-0196 | 56 | | | | | | | |
| 58 | IS-80-0581 | A-70567-0027 | 70567-0061 | A-70567-0061 | IS-80-0583 | A-70567-0095 | 70567-0129 | A-70567-0129 | IS-80-0585 | A-70567-0163 | 70567-0197 | A-70567-0197 | 58 | | | | | | | |
| 60 | IS-80-0601 | A-70567-0028 | 70567-0062 | A-70567-0062 | IS-80-0603 | A-70567-0096 | 70567-0130 | A-70567-0130 | IS-80-0605 | A-70567-0164 | 70567-0198 | A-70567-0198 | 60 | | | | | | | |
| 62 | IS-80-0621 | A-70567-0029 | 70567-0063 | A-70567-0063 | IS-80-0623 | A-70567-0097 | 70567-0131 | A-70567-0131 | IS-80-0625 | A-70567-0165 | 70567-0199 | A-70567-0199 | 62 | | | | | | | |
| 64 | IS-80-0641 | A-70567-0030 | 70567-0064 | A-70567-0064 | IS-80-0643 | A-70567-0098 | 70567-0132 | A-70567-0132 | IS-80-0645 | A-70567-0166 | 70567-0200 | A-70567-0200 | 64 | | | | | | | |
| 66 | IS-80-0661 | A-70567-0031 | 70567-0065 | A-70567-0065 | IS-80-0663 | A-70567-0099 | 70567-0133 | A-70567-0133 | IS-80-0665 | A-70567-0167 | 70567-0201 | A-70567-0201 | 66 | | | | | | | |
| 68 | IS-80-0681 | A-70567-0032 | 70567-0066 | A-70567-0066 | IS-80-0683 | A-70567-0100 | 70567-0134 | A-70567-0134 | IS-80-0685 | A-70567-0168 | 70567-0202 | A-70567-0202 | 68 | | | | | | | |
| 70 | IS-80-0701 | A-70567-0033 | 70567-0067 | A-70567-0067 | IS-80-0703 | A-70567-0101 | 70567-0135 | A-70567-0135 | IS-80-0705 | A-70567-0169 | 70567-0203 | A-70567-0203 | 70 | | | | | | | |
| 72 | IS-80-0721 | A-70567-0034 | 70567-0068 | A-70567-0068 | IS-80-0723 | A-70567-0102 | 70567-0136 | A-70567-0136 | IS-80-0725 | A-70567-0170 | 70567-0204 | A-70567-0204 | 72 | | | | | | | |

QUALITY SYMBOLS: 4 PLACES ±.005, 3 PLACES ±.010, 2 PLACES ±.015, 1 PLACE ±.025, ANGULAR ±1/2°

GENERAL TOLERANCES (UNLESS SPECIFIED): DIMENSION STYLE MM/IN, SCALE 1:1, DESIGN UNITS INCH, THIRD ANGLE PROJECTION

DRAWN BY: EIK, DATE: 1988/03/10, TITLE: 4 SIDES SHROUDED HEADER HIGH TEMP. (2.54) 100 GRID W/ (0.64) 0.025 PINS

CHECKED BY: EIK, DATE: 1988/03/10

APPROVED BY: MILLER, DATE: 2010/03/31

MATERIAL NO: SEE TABLE, DOCUMENT NO: SDA-70567-****, SHEET NO: 3 OF 5

DRAFT WHERE APPLICABLE MUST REMAIN WITHIN DIMENSIONS

THIS DRAWING CONTAINS INFORMATION THAT IS PROPRIETARY TO MOLEX INCORPORATED AND SHOULD NOT BE USED WITHOUT WRITTEN PERMISSION

| ENGINEERING NUMBER A-70567 | MANUFACTURE RELEASE STATUS | E REF. | C .015 (0.38) | CONNECTOR END PLATING | | P.C. BOARD END PLATING | | PACKAGING INFORMATION PK-70873- |
|-------------------------------|----------------------------|-------------|---------------|-----------------------|-------------|------------------------|-------------|---------------------------------|
| | | | | TYPE | D MEAS. | TYPE | F MEAS. | |
| -0205/-0238 | R.F.M. | .130 (3.30) | .315 (8.00) | TIN | .100 (2.54) | TIN | .050 (1.27) | 0018 |
| -0239/-0272 | R.F.M. | .200 (5.08) | .315 (8.00) | TIN | .100 (2.54) | TIN | .050 (1.27) | 0018 |
| -0273/-0306 | R.F.M. | .130 (3.30) | .315 (8.00) | 15 GOLD | .100 (2.54) | TIN | .050 (1.27) | 0018 |
| -0307/-0340 | R.F.M. | .200 (5.08) | .315 (8.00) | 15 GOLD | .100 (2.54) | TIN | .050 (1.27) | 0018 |
| -0341/-0374 | R.F.M. | .130 (3.30) | .315 (8.00) | 30 GOLD | .100 (2.54) | TIN | .050 (1.27) | 0018 |
| -0375/-0408 | R.F.M. | .200 (5.08) | .315 (8.00) | 30 GOLD | .100 (2.54) | TIN | .050 (1.27) | 0018 |

| NO. OF CKTS | OPTION "B" | OPTION "B" | OPTION "B" | OPTION "B" | OPTION "B" | OPTION "B" | NO. OF CKTS |
|-------------|-------------------------|-------------------------|-------------------------|-------------------------|-------------------------|-------------------------|-------------|
| 06 | IS-80-0067 A-70567-0205 | 70567-0239 A-70567-0239 | IS-80-0069 A-70567-0273 | 70567-0307 A-70567-0307 | IS-80-1061 A-70567-0341 | 70567-0375 A-70567-0375 | 06 |
| 08 | IS-80-0087 A-70567-0206 | 70567-0240 A-70567-0240 | IS-80-0089 A-70567-0274 | 70567-0308 A-70567-0308 | IS-80-1081 A-70567-0342 | 70567-0376 A-70567-0376 | 08 |
| 10 | IS-80-0107 A-70567-0207 | 70567-0241 A-70567-0241 | IS-80-0109 A-70567-0275 | 70567-0309 A-70567-0309 | IS-80-1101 A-70567-0343 | 70567-0377 A-70567-0377 | 10 |
| 12 | IS-80-0127 A-70567-0208 | 70567-0242 A-70567-0242 | IS-80-0129 A-70567-0276 | 70567-0310 A-70567-0310 | IS-80-1121 A-70567-0344 | 70567-0378 A-70567-0378 | 12 |
| 14 | IS-80-0147 A-70567-0209 | 70567-0243 A-70567-0243 | IS-80-0149 A-70567-0277 | 70567-0311 A-70567-0311 | IS-80-1141 A-70567-0345 | 70567-0379 A-70567-0379 | 14 |
| 16 | IS-80-0167 A-70567-0210 | 70567-0244 A-70567-0244 | IS-80-0169 A-70567-0278 | 70567-0312 A-70567-0312 | IS-80-1161 A-70567-0346 | 70567-0380 A-70567-0380 | 16 |
| 18 | IS-80-0187 A-70567-0211 | 70567-0245 A-70567-0245 | IS-80-0189 A-70567-0279 | 70567-0313 A-70567-0313 | IS-80-1181 A-70567-0347 | 70567-0381 A-70567-0381 | 18 |
| 20 | IS-80-0207 A-70567-0212 | 70567-0246 A-70567-0246 | IS-80-0209 A-70567-0280 | 70567-0314 A-70567-0314 | IS-80-1201 A-70567-0348 | 70567-0382 A-70567-0382 | 20 |
| 22 | IS-80-0227 A-70567-0213 | 70567-0247 A-70567-0247 | IS-80-0229 A-70567-0281 | 70567-0315 A-70567-0315 | IS-80-1221 A-70567-0349 | 70567-0383 A-70567-0383 | 22 |
| 24 | IS-80-0247 A-70567-0214 | 70567-0248 A-70567-0248 | IS-80-0249 A-70567-0282 | 70567-0316 A-70567-0316 | IS-80-1241 A-70567-0350 | 70567-0384 A-70567-0384 | 24 |
| 26 | IS-80-0267 A-70567-0215 | 70567-0249 A-70567-0249 | IS-80-0269 A-70567-0283 | 70567-0317 A-70567-0317 | IS-80-1261 A-70567-0351 | 70567-0385 A-70567-0385 | 26 |
| 28 | IS-80-0287 A-70567-0216 | 70567-0250 A-70567-0250 | IS-80-0289 A-70567-0284 | 70567-0318 A-70567-0318 | IS-80-1281 A-70567-0352 | 70567-0386 A-70567-0386 | 28 |
| 30 | IS-80-0307 A-70567-0217 | 70567-0251 A-70567-0251 | IS-80-0309 A-70567-0285 | 70567-0319 A-70567-0319 | IS-80-1301 A-70567-0353 | 70567-0387 A-70567-0387 | 30 |
| 32 | IS-80-0327 A-70567-0218 | 70567-0252 A-70567-0252 | IS-80-0329 A-70567-0286 | 70567-0320 A-70567-0320 | IS-80-1321 A-70567-0354 | 70567-0388 A-70567-0388 | 32 |
| 34 | IS-80-0347 A-70567-0219 | 70567-0253 A-70567-0253 | IS-80-0349 A-70567-0287 | 70567-0321 A-70567-0321 | IS-80-1341 A-70567-0355 | 70567-0389 A-70567-0389 | 34 |
| 36 | IS-80-0367 A-70567-0220 | 70567-0254 A-70567-0254 | IS-80-0369 A-70567-0288 | 70567-0322 A-70567-0322 | IS-80-1361 A-70567-0356 | 70567-0390 A-70567-0390 | 36 |
| 38 | IS-80-0387 A-70567-0221 | 70567-0255 A-70567-0255 | IS-80-0389 A-70567-0289 | 70567-0323 A-70567-0323 | IS-80-1381 A-70567-0357 | 70567-0391 A-70567-0391 | 38 |
| 40 | IS-80-0407 A-70567-0222 | 70567-0256 A-70567-0256 | IS-80-0409 A-70567-0290 | 70567-0324 A-70567-0324 | IS-80-1401 A-70567-0358 | 70567-0392 A-70567-0392 | 40 |
| 42 | IS-80-0427 A-70567-0223 | 70567-0257 A-70567-0257 | IS-80-0429 A-70567-0291 | 70567-0325 A-70567-0325 | IS-80-1421 A-70567-0359 | 70567-0393 A-70567-0393 | 42 |
| 44 | IS-80-0447 A-70567-0224 | 70567-0258 A-70567-0258 | IS-80-0449 A-70567-0292 | 70567-0326 A-70567-0326 | IS-80-1441 A-70567-0360 | 70567-0394 A-70567-0394 | 44 |
| 46 | IS-80-0467 A-70567-0225 | 70567-0259 A-70567-0259 | IS-80-0469 A-70567-0293 | 70567-0327 A-70567-0327 | IS-80-1461 A-70567-0361 | 70567-0395 A-70567-0395 | 46 |
| 48 | IS-80-0487 A-70567-0226 | 70567-0260 A-70567-0260 | IS-80-0489 A-70567-0294 | 70567-0328 A-70567-0328 | IS-80-1481 A-70567-0362 | 70567-0396 A-70567-0396 | 48 |
| 50 | IS-80-0507 A-70567-0227 | 70567-0261 A-70567-0261 | IS-80-0509 A-70567-0295 | 70567-0329 A-70567-0329 | IS-80-1501 A-70567-0363 | 70567-0397 A-70567-0397 | 50 |
| 52 | IS-80-0527 A-70567-0228 | 70567-0262 A-70567-0262 | IS-80-0529 A-70567-0296 | 70567-0330 A-70567-0330 | IS-80-1521 A-70567-0364 | 70567-0398 A-70567-0398 | 52 |
| 54 | IS-80-0547 A-70567-0229 | 70567-0263 A-70567-0263 | IS-80-0549 A-70567-0297 | 70567-0331 A-70567-0331 | IS-80-1541 A-70567-0365 | 70567-0399 A-70567-0399 | 54 |
| 56 | IS-80-0567 A-70567-0230 | 70567-0264 A-70567-0264 | IS-80-0569 A-70567-0298 | 70567-0332 A-70567-0332 | IS-80-1561 A-70567-0366 | 70567-0400 A-70567-0400 | 56 |
| 58 | IS-80-0587 A-70567-0231 | 70567-0265 A-70567-0265 | IS-80-0589 A-70567-0299 | 70567-0333 A-70567-0333 | IS-80-1581 A-70567-0367 | 70567-0401 A-70567-0401 | 58 |
| 60 | IS-80-0607 A-70567-0232 | 70567-0266 A-70567-0266 | IS-80-0609 A-70567-0300 | 70567-0334 A-70567-0334 | IS-80-1601 A-70567-0368 | 70567-0402 A-70567-0402 | 60 |
| 62 | IS-80-0627 A-70567-0233 | 70567-0267 A-70567-0267 | IS-80-0629 A-70567-0301 | 70567-0335 A-70567-0335 | IS-80-1621 A-70567-0369 | 70567-0403 A-70567-0403 | 62 |
| 64 | IS-80-0647 A-70567-0234 | 70567-0268 A-70567-0268 | IS-80-0649 A-70567-0302 | 70567-0336 A-70567-0336 | IS-80-1641 A-70567-0370 | 70567-0404 A-70567-0404 | 64 |
| 66 | IS-80-0667 A-70567-0235 | 70567-0269 A-70567-0269 | IS-80-0669 A-70567-0303 | 70567-0337 A-70567-0337 | IS-80-1661 A-70567-0371 | 70567-0405 A-70567-0405 | 66 |
| 68 | IS-80-0687 A-70567-0236 | 70567-0270 A-70567-0270 | IS-80-0689 A-70567-0304 | 70567-0338 A-70567-0338 | IS-80-1681 A-70567-0372 | 70567-0406 A-70567-0406 | 68 |
| 70 | IS-80-0707 A-70567-0237 | 70567-0271 A-70567-0271 | IS-80-0709 A-70567-0305 | 70567-0339 A-70567-0339 | IS-80-1701 A-70567-0373 | 70567-0407 A-70567-0407 | 70 |
| 72 | IS-80-0727 A-70567-0238 | 70567-0272 A-70567-0272 | IS-80-0729 A-70567-0306 | 70567-0340 A-70567-0340 | IS-80-1721 A-70567-0374 | 70567-0408 A-70567-0408 | 72 |

| | | | | | |
|--|--------------------------------------|--|--|--|------------------|
| SEE SHEETS 1 & 2 REC. NO. 147201-024 DRAWN BY BARBARA 2010/03/10 CHECKED BY JIM 1888/03/10 APPROVED BY JIM 1888/03/10 DATE 2010/03/31 | QUALITY SYMBOLS ∇=0 ∇=0 ∇=0 | GENERAL TOLERANCES (UNLESS SPECIFIED) DIMENSIONS IN MM AND INCH 4 PLACES ±.005 3 PLACES ±.005 2 PLACES ±.010 1 PLACE ±.025 ANGULAR ±1/2° | DIMENSION STYLE MM/IN SCALE 1:1 DESIGN UNITS INCH THIRD ANGLE PROJECTION | DRAWN BY DATE TITLE EIK 1988/03/10 4 SIDES SHROUDED HEADER CHECKED BY DATE EIK 1988/03/10 HIGH TEMP (2.54)/100 APPROVED BY DATE MILLER 2010/03/31 GRID W/ (0.64)/0.25 PINS MATERIAL NO. MOLEX INCORPORATED SEE TABLE DOCUMENT NO. SDA-70567-**** THIS DRAWING CONTAINS INFORMATION THAT IS PROPRIETARY TO MOLEX INCORPORATED AND SHOULD NOT BE USED WITHOUT WRITTEN PERMISSION | SHEET NO. 4 OF 5 |
|--|--------------------------------------|--|--|--|------------------|

