

Excellent Integrated System Limited

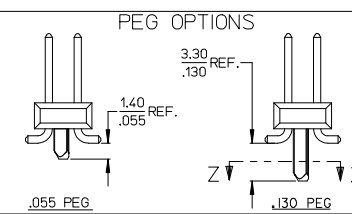
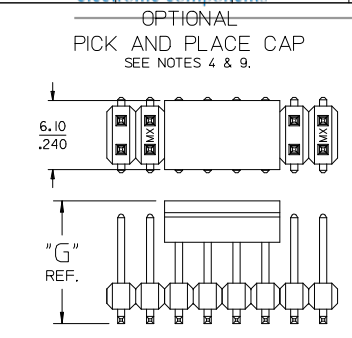
Stocking Distributor

Click to view price, real time Inventory, Delivery & Lifecycle Information:

[Molex Connector Corporation](#)
[0015910487](#)

For any questions, you can email us directly:

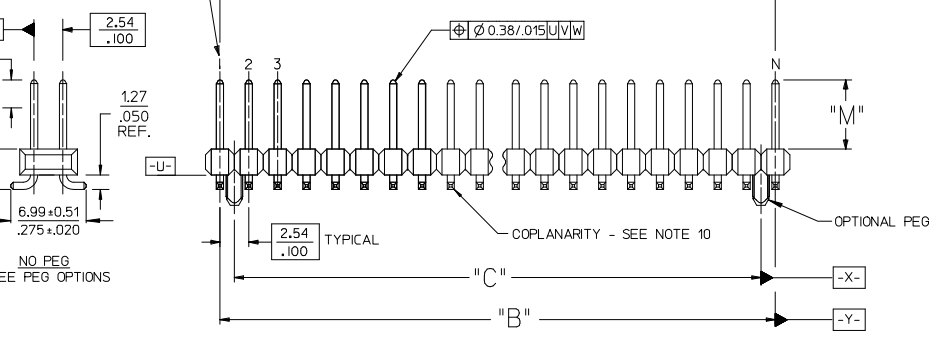
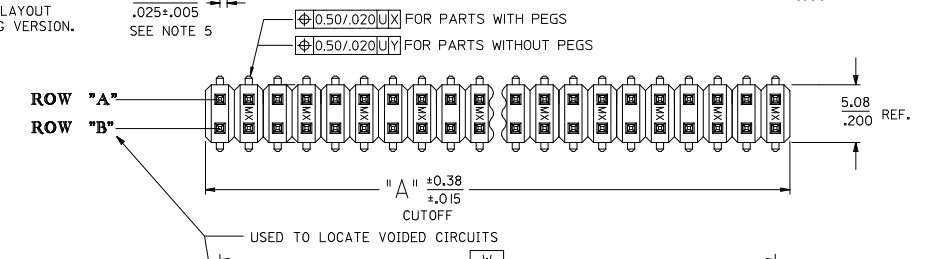
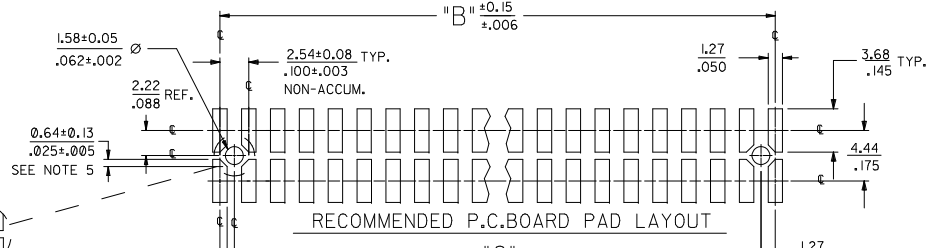
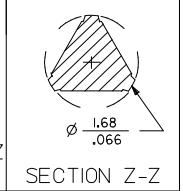
sales@integrated-circuit.com



- NOTES:**
1. MATERIALS: INSULATOR: GLASS FILLED LIQUID CRYSTAL POLYMER (LCP), UL94 V-0, COLOR: BLACK
TERMINAL: COPPER ALLOY
 2. FINISH:
59 TIN - 0.00150/0.00059 MIN. BRIGHT TIN OVER NICKEL OVERALL.
150 TIN - 0.00381/0.00150 MIN. BRIGHT TIN OVER NICKEL OVERALL.
REFLOWED MATTE TIN - 0.00152/0.00060 MIN. REFLOWED MATTE TIN OVER NICKEL OVERALL.
15 GOLD - 0.00038/0.00015 MIN. GOLD IN SELECT AREA OVER 0.00191/0.00075 MIN. TIN IN SELECT AREA OVER NICKEL OVERALL.
30 GOLD - 0.00076/0.00030 MIN. GOLD IN SELECT AREA OVER 0.00191/0.00075 MIN. TIN IN SELECT AREA OVER NICKEL OVERALL.
50 GOLD - 0.00127/0.00050 MIN. GOLD IN SELECT AREA OVER 0.00254/0.00100 MIN. TIN IN SELECT AREA OVER NICKEL OVERALL.
 3. PART TO CONFORM TO PS-71308.
 4. PACKAGING (SEE CHARTS): BULK: PER PK-70873-0353
TUBES: PER PK-70873-0041.
71308-82** IN TUBES: PER PK-70873-042.
TUBES W/ VAC CAPS: PER PK-70873-0691
TAPE AND REEL W/ VAC CAPS: PER PK-70873-0805.
SEE SHEET 3 FOR TAPE & REEL PRODUCT WITH SHALLOW POCKET REQUIREMENTS.
 5. TYP. DIMENSIONS FOR LANDS SURROUNDING HOLES FOR RETENTION PEGS.
 6. PIN SOLERABILITY PER MOLEX SPEC. SMES-152.
 7. SEE SHEETS 2-6 FOR CHARTED DIMS., PART/EDP NO'S, AND VOIDED CIRCUITS.
 8. PIN PUSHOUT FORCE: 3 LBS. MINIMUM.
 9. PICK-N-PLACE CAPS WILL BE PLACED SO THAT VACUUM PICK UP AREA WILL BE IN CENTER OF PART.
 10. COPLANARITY FOR CIRCUIT SIZES UP TO 40 IS 0.15 MM/0.06 INCH. FOR CIRCUIT SIZES 42 AND LARGER, CONTACT MOLEX SALES DEPARTMENT.
 11. THIS PART CONFORMS TO CLASS B REQUIREMENTS OF COSMETIC SPECIFICATION PS-45499-002.
 12. MEASURE POINT FOR PLATING THICKNESS.

DIM. "M"	DIM. "G"
6.10 .240	10.67 .420
8.13 .320	12.70 .500

P.C. BOARD PAD LAYOUT AT ENDS FOR NO PEG VERSION.



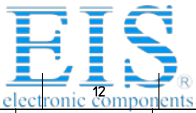
DESCRIPTION	REVISION
71308-8426 PLATING	K8
EC NO: UCP2014-4901	
DRW/KJPPER	
CHK/KONGUTEN	
APPROV/STH	

QUALITY SYMBOLS
4 PLACES ± ---
3 PLACES ± ---
2 PLACES ± 0.13
1 PLACE ± 0.25
0 PLACE ± ---

GENERAL TOLERANCES (UNLESS SPECIFIED)	
mm	INCH
± .05	± .005
± .13	± .010
± .25	± .020
ANGULAR ± 1/2°	

DIMENSION STYLE	SCALE	DESIGN UNITS	THIRD ANGLE PROJECTION
MM/IN	INCH	INCH	THIRD ANGLE PROJECTION

TITLE	DOCUMENT NO.	SHEET NO.
SALES ASSY INSULATOR DUAL ROW SMT W/BREAK-OFF .025SQ PIN GULLWING .100	SD-71308-001	1 OF 6



Distributor of Molex Connector Corporation: Excellent Integrated System Limited

Datasheet of 0015910487 - CONN HEADER 48POS GOLD SMD

Contact us: sales@integrated-circuit.com Website: www.integrated-circuit.com

Main product specification table with columns for packaging, dimensions, and part numbers.

Technical drawing area containing a large 'NO PEG VERSION' watermark, a table of general tolerances, dimension styles, and design units.



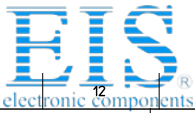
13 12 11 10 9 8 7 6 5 4 3 2 1

		IN TAPE AND REEL WITH SHALLOW POCKET TAPE						BULK / IN TUBES	
PACKAGING SEE NOTE 4. SHT 1		4-8 CKT	TAPE-N-REEL W/ VAC CAPS		TAPE-N-REEL W/ VAC CAPS		BULK	BULK	
		10-100 CKT	TAPE-N-REEL W/ VAC CAPS		TAPE-N-REEL W/ VAC CAPS		TUBES	TUBES	
DIM. M±0.25 MM			6.10 (.240)		6.10 (.240)		8.13 (.320)	13.59 (.535)	
PLATING			30 GOLD		15 GOLD		150 TIN	150 TIN	
DIM. H			2.54 (.100)		2.54 (.100)		4.57 (.180)	4.57 (.180)	
CKTS	DIM. A		DIM. B		EDP NUMBER	EDP NUMBER	EDP NUMBER	EDP NUMBER	CKTS
	MM	IN	MM	IN					
04	5.08	.200	2.54	.100					04
06	7.62	.300	5.08	.200		015-91-6068			06
08	10.16	.400	7.62	.300		015-91-6088			08
10	12.70	.500	10.16	.400		015-91-6108			10
12	15.24	.600	12.70	.500			713088010	71308-8210	12
14	17.78	.700	15.24	.600	015-91-6148				14
16	20.32	.800	17.78	.700			713088016		16
18	22.86	.900	20.32	.800					18
20	25.40	1.000	22.86	.900					20
22	27.94	1.100	25.40	1.000					22
24	30.48	1.200	27.94	1.100					24
26	33.02	1.300	30.48	1.200					26
28	35.56	1.400	33.02	1.300					28
30	38.10	1.500	35.56	1.400					30
32	40.64	1.600	38.10	1.500					32
34	43.18	1.700	40.64	1.600					34
36	45.72	1.800	43.18	1.700					36
38	48.26	1.900	45.72	1.800					38
40	50.80	2.000	48.26	1.900					40
42	53.34	2.100	50.80	2.000					42
44	55.88	2.200	53.34	2.100					44
46	58.42	2.300	55.88	2.200					46
48	60.96	2.400	58.42	2.300					48
50	63.50	2.500	60.96	2.400					50
52	66.04	2.600	63.50	2.500					52
54	68.58	2.700	66.04	2.600					54
56	71.12	2.800	68.58	2.700					56
58	73.66	2.900	71.12	2.800					58
60	76.20	3.000	73.66	2.900					60
62	78.74	3.100	76.20	3.000					62
64	81.28	3.200	78.74	3.100					64
66	83.82	3.300	81.28	3.200					66
68	86.36	3.400	83.82	3.300					68
70	88.90	3.500	86.36	3.400					70
72	91.44	3.600	88.90	3.500					72
74	93.98	3.700	91.44	3.600					74
76	96.52	3.800	93.98	3.700					76
78	99.06	3.900	96.52	3.800					78
80	101.60	4.000	99.06	3.900					80
82	104.14	4.100	101.60	4.000					82
84	106.68	4.200	104.14	4.100					84
86	109.22	4.300	106.68	4.200					86
88	111.76	4.400	109.22	4.300					88
90	114.30	4.500	111.76	4.400					90
92	116.84	4.600	114.30	4.500					92
94	119.38	4.700	116.84	4.600					94
96	121.92	4.800	119.38	4.700					96
98	124.46	4.900	121.92	4.800					98
100	127.00	5.000	124.46	4.900					100

NO PEG VERSION
(ALSO SEE SHEET 2)

SEE SHEET 1 EC NO: UCP2014-4901 DRAWN BY: 2015/08/12 CHKD: 2015/08/12 APPROV: 2015/09/10	QUALITY SYMBOLS ▽=0 ▽=0 ▽=0	GENERAL TOLERANCES (UNLESS SPECIFIED)		DIMENSION STYLE		SCALE	DESIGN UNITS	THIRD ANGLE PROJECTION
		mm	INCH	MM/IN	DATE	SALES ASSY INSULATOR DUAL ROW SMT W/BREAK-OFF .025SQ PIN GULLWING .100 molex	INCH	
		4 PLACES ±---	±---	DRAWN BY	DATE			
		3 PLACES ±---	±.005	CHECKED BY	DATE			
2 PLACES ±0.13	±.010	APPROVED BY	DATE					
1 PLACE ±0.25	±---	KMS	1999/10/15	MATERIAL NO.	DOCUMENT NO.	SHEET NO.		
0 PLACE ±---	±---	ANGULAR ±1/2°		SEE TABLE	SD-71308-001	3 OF 6		
DRAFT WHERE APPLICABLE MUST REMAIN WITHIN DIMENSIONS				THIS DRAWING CONTAINS INFORMATION THAT IS PROPRIETARY TO MOLEX INCORPORATED AND SHOULD NOT BE USED WITHOUT WRITTEN PERMISSION				

12 11 10 9 8 7 6 5 4 3 2 1

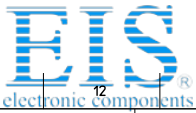


Distributor of Molex Connector Corporation: Excellent Integrated System Limited

Datasheet of 0015910487 - CONN HEADER 48POS GOLD SMD

Contact us: sales@integrated-circuit.com Website: www.integrated-circuit.com

PKT	DIM. A		DIM. B		DIM. C		EDP NUMBER	EDP NUMBER	EDP NUMBER	EDP NUMBER	EDP NUMBER	EDP NUMBER	EDP NUMBER	EDP NUMBER	EDP NUMBER	EDP NUMBER	EDP NUMBER	EDP NUMBER
	MM	IN	MM	IN	MM	IN												
04	5.08	.200	2.54	.100	---	---	015-91-1041	015-91-6044	015-91-1042	015-91-6045	015-91-1043	015-91-6046	015-91-1044	015-91-0047	015-91-1040	015-91-1040	015-91-1040	04
06	7.62	.300	5.08	.200	2.54	.100	015-91-1061	015-91-6064	015-91-1062	015-91-6065	015-91-1063	015-91-6066	015-91-1064	015-91-0067	015-91-1060	015-91-1060	015-91-1060	06
08	10.16	.400	7.62	.300	5.08	.200	015-91-1081	015-91-6084	015-91-1082	015-91-6085	015-91-1083	015-91-6086	015-91-1084	015-91-0087	015-91-1080	015-91-1080	015-91-1080	08
10	12.70	.500	10.16	.400	7.62	.300	015-91-1101	015-91-6104	015-91-1102	015-91-6105	015-91-1103	015-91-6106	015-91-1104	015-91-0107	015-91-1100	015-91-1100	015-91-1100	10
12	15.24	.600	12.70	.500	10.16	.400	015-91-1121	015-91-6124	015-91-1122	015-91-6125	015-91-1123	015-91-6126	015-91-1124	015-91-0127	015-91-1120	015-91-1120	015-91-1120	12
14	17.78	.700	15.24	.600	12.70	.500	015-91-1141	015-91-6144	015-91-1142	015-91-6145	015-91-1143	015-91-6146	015-91-1144	015-91-0147	015-91-1140	015-91-1140	015-91-1140	14
16	20.32	.800	17.78	.700	15.24	.600	015-91-1161	015-91-6164	015-91-1162	015-91-6165	015-91-1163	015-91-6166	015-91-1164	015-91-0167	015-91-1160	015-91-1160	015-91-1160	16
18	22.86	.900	20.32	.800	17.78	.700	015-91-1181	015-91-6184	015-91-1182	015-91-6185	015-91-1183	015-91-6186	015-91-1184	015-91-0187	015-91-1180	015-91-1180	015-91-1180	18
20	25.40	1.000	22.86	.900	20.32	.800	015-91-1201	015-91-6204	015-91-1202	015-91-6205	015-91-1203	015-91-6206	015-91-1204	015-91-0207	015-91-1200	015-91-1200	015-91-1200	20
22	27.94	1.100	25.40	1.000	22.86	.900	015-91-1221	015-91-6224	015-91-1222	015-91-6225	015-91-1223	015-91-6226	015-91-1224	015-91-0227	015-91-1220	015-91-1220	015-91-1220	22
24	30.48	1.200	27.94	1.100	25.40	1.000	015-91-1241	71308-6901	015-91-1242	015-91-6245	015-91-1243	015-91-6246	015-91-1244	015-91-0247	015-91-1240	015-91-1240	015-91-1240	24
26	33.02	1.300	30.48	1.200	27.94	1.100	015-91-1261	015-91-6264	015-91-1262	015-91-6265	015-91-1263	015-91-6266	015-91-1264	015-91-0267	015-91-1260	015-91-1260	015-91-1260	26
28	35.56	1.400	33.02	1.300	30.48	1.200	015-91-1281	015-91-6284	015-91-1282	015-91-6285	015-91-1283	015-91-6286	015-91-1284	015-91-0287	015-91-1280	015-91-1280	015-91-1280	28
30	38.10	1.500	35.56	1.400	33.02	1.300	015-91-1301	015-91-6304	015-91-1302	015-91-6305	015-91-1303	015-91-6306	015-91-1304	015-91-0307	015-91-1300	015-91-1300	015-91-1300	30
32	40.64	1.600	38.10	1.500	35.56	1.400	015-91-1321	015-91-6324	015-91-1322	015-91-6325	015-91-1323	015-91-6326	015-91-1324	015-91-0327	015-91-1320	015-91-1320	015-91-1320	32
34	43.18	1.700	40.64	1.600	38.10	1.500	015-91-1341	015-91-6344	015-91-1342	015-91-6345	015-91-1343	015-91-6346	015-91-1344	015-91-0347	015-91-1340	015-91-1340	015-91-1340	34
36	45.72	1.800	43.18	1.700	40.64	1.600	015-91-1361	015-91-6364	015-91-1362	015-91-6365	015-91-1363	015-91-6366	015-91-1364	015-91-0367	015-91-1360	015-91-1360	015-91-1360	36
38	48.26	1.900	45.72	1.800	43.18	1.700	015-91-1381	015-91-6384	015-91-1382	015-91-6385	015-91-1383	015-91-6386	015-91-1384	015-91-0387	015-91-1380	015-91-1380	015-91-1380	38
40	50.80	2.000	48.26	1.900	45.72	1.800	015-91-1401	015-91-6404	015-91-1402	015-91-6405	015-91-1403	015-91-6406	015-91-1404	015-91-0407	015-91-1400	015-91-1400	015-91-1400	40
42	53.34	2.100	50.80	2.000	48.26	1.900	015-91-1421	015-91-6424	015-91-1422	015-91-6425	015-91-1423	015-91-6426	015-91-1424	015-91-0427	015-91-1420	015-91-1420	015-91-1420	42
44	55.88	2.200	53.34	2.100	50.80	2.000	015-91-1441	015-91-6444	015-91-1442	015-91-6445	015-91-1443	015-91-6446	015-91-1444	015-91-0447	015-91-1440	015-91-1440	015-91-1440	44
46	58.42	2.300	55.88	2.200	53.34	2.100	015-91-1461	015-91-6464	015-91-1462	015-91-6465	015-91-1463	015-91-6466	015-91-1464	015-91-0467	015-91-1460	015-91-1460	015-91-1460	46
48	60.96	2.400	58.42	2.300	55.88	2.200	015-91-1481	015-91-6484	015-91-1482	015-91-6485	015-91-1483	015-91-6486	015-91-1484	015-91-0487	015-91-1480	015-91-1480	015-91-1480	48
50	63.50	2.500	60.96	2.400	58.42	2.300	015-91-1501	015-91-6504	015-91-1502	015-91-6505	015-91-1503	015-91-6506	015-91-1504	015-91-0507	015-91-1500	015-91-1500	015-91-1500	50
52	66.04	2.600	63.50	2.500	60.96	2.400	015-91-1521	015-91-6524	015-91-1522	015-91-6525	015-91-1523	015-91-6526	015-91-1524	015-91-0527	015-91-1520	015-91-1520	015-91-1520	52
54	68.58	2.700	66.04	2.600	63.50	2.500	015-91-1541	015-91-6544	015-91-1542	015-91-6545	015-91-1543	015-91-6546	015-91-1544	015-91-0547	015-91-1540	015-91-1540	015-91-1540	54
56	71.12	2.800	68.58	2.700	66.04	2.600	015-91-1561	015-91-6564	015-91-1562	015-91-6565	015-91-1563	015-91-6566	015-91-1564	015-91-0567	015-91-1560	015-91-1560	015-91-1560	56
58	73.66	2.900	71.12	2.800	68.58	2.700	015-91-1581	015-91-6584	015-91-1582	015-91-6585	015-91-1583	015-91-6586	015-91-1584	015-91-0587	015-91-1580	015-91-1580	015-91-1580	58
60	76.20	3.000	73.66	2.900	71.12	2.800	015-91-1601	015-91-6604	015-91-1602	015-91-6605	015-91-1603	015-91-6606	015-91-1604	015-91-0607	015-91-1600	015-91-1600	015-91-1600	60
62	78.74	3.100	76.20	3.000	73.66	2.900	015-91-1621	015-91-6624	015-91-1622	015-91-6625	015-91-1623	015-91-6626	015-91-1624	015-91-0627	015-91-1620	015-91-1620	015-91-1620	62
64	81.28	3.200	78.74	3.100	76.20	3.000	015-91-1641	015-91-6644	015-91-1642	015-91-6645	015-91-1643	015-91-6646	015-91-1644	015-91-0647	015-91-1640	015-91-1640	015-91-1640	64
66	83.82	3.300	81.28	3.200	78.74	3.100	015-91-1661	015-91-6664	015-91-1662	015-91-6665	015-91-1663	015-91-6666	015-91-1664	015-91-0667	015-91-1660	015-91-1660	015-91-1660	66
68	86.36	3.400	83.82	3.300	81.28	3.200	015-91-1681	015-91-6684	015-91-1682	015-91-6685	015-91-1683	015-91-6686	015-91-1684	015-91-0687	015-91-1680	015-91-1680	015-91-1680	68
70	88.90	3.500	86.36	3.400	83.82	3.300	015-91-1701	015-91-6704	015-91-1702	015-91-6705	015-91-1703	015-91-6706	015-91-1704	015-91-0707	015-91-1700	015-91-1700	015-91-1700	70
72	91.44	3.600	88.90	3.500	86.36	3.400	015-91-1721	015-91-6724	015-91-1722	015-91-6725	015-91-1723	015-91-6726	015-91-1724	015-91-0727	015-91-1720	015-91-1720	015-91-1720	72
74	93.98	3.700	91.44	3.600	88.90	3.500	015-91-1741	015-91-6744	015-91-1742	015-91-6745	015-91-1743	015-91-6746	015-91-1744	015-91-0747	015-91-1740	015-91-1740	015-91-1740	74
76	96.52	3.800	93.98	3.700	91.44	3.600	015-91-1761	015-91-6764	015-91-1762	015-91-6765	015-91-1763	015-91-6766	015-91-1764	015-91-0767	015-91-1760	015-91-1760	015-91-1760	76
78	99.06	3.900	96.52	3.800	93.98	3.700	015-91-1781	015-91-6784	015-91-1782	015-91-6785	015-91-1783	015-91-6786	015-91-1784	015-91-0787	015-91-1780	015-91-1780	015-91-1780	78
80	101.60	4.000	99.06	3.900	96.52	3.800	015-91-1801	015-91-6804	015-91-1802	015-91-6805	015-91-1803	015-91-6806	015-91-1804	015-91-0807	015-91-1800	015-91-1800	015-91-1800	80
82	104.14	4.100	101.60	4.000	99.06	3.900	71308-4082	71308-4182	71308-4282	71308-4382	71308-4482	71308-4582	71308-4682	71308-4782	71308-4882	71308-4982	71308-5082	82
84	106.68	4.200	104.14	4.100	101.60	4.000	71308-4084	71308-4184	71308-4284	71308-4384	71308-4484	71308-4584	71308-4684	71308-4784	71308-4884	71308-4984	71308-5084	84
86	109.22	4.300	106.68	4.200	104.14	4.100	71308-4086	71308-4186	71308-4286	71308-4386	71308-4486	71308-4586	71308-4686	71308-4786	71308-4886	71308-4986	71308-5086	86
88	111.76	4.400	109.22	4.300	106.68	4.200	71308-4088	71308-4188	71308-4288	71308-4388	71308-4488	71308-4588	71308-4688	71308-4788	71308-4888	71308-4988	71308-5088	88
90	114.30	4.500	111.76	4.400	109.22	4.300	71308-4090	71308-4190	71308-4290									



Distributor of Molex Connector Corporation: Excellent Integrated System Limited

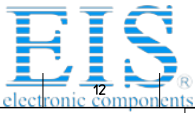
Datasheet of 0015910487 - CONN HEADER 48POS GOLD SMD

Contact us: sales@integrated-circuit.com Website: www.integrated-circuit.com

PKT	DIM. A		DIM. B		DIM. C		EDP NUMBER	EDP NUMBER	EDP NUMBER	EDP NUMBER	EDP NUMBER	EDP NUMBER	EDP NUMBER	EDP NUMBER	CKTS
	MM	IN	MM	IN	MM	IN									
04	5.08	.200	2.54	.100	-----	-----	015-91-1048	015-91-6047							04
06	7.62	.300	5.08	.200	2.54	.100	015-91-1068	015-91-6067	71308-6106	71308-6206					06
08	10.16	.400	7.62	.300	5.08	.200	015-91-1088	015-91-6087	71308-6108	71308-6208					08
10	12.70	.500	10.16	.400	7.62	.300	015-91-1108	015-91-6107	71308-6110	71308-6210					10
12	15.24	.600	12.70	.500	10.16	.400	015-91-1128								12
14	17.78	.700	15.24	.600	12.70	.500	015-91-1148	015-91-6147							14
16	20.32	.800	17.78	.700	15.24	.600	015-91-1168	015-91-6167							16
18	22.86	.900	20.32	.800	17.78	.700	015-91-1188								18
20	25.40	1.000	22.86	.900	20.32	.800	015-91-1208	015-91-6207							20
22	27.94	1.100	25.40	1.000	22.86	.900	015-91-1228								22
24	30.48	1.200	27.94	1.100	25.40	1.000	015-91-1248								24
26	33.02	1.300	30.48	1.200	27.94	1.100	015-91-1268		71308-6126		71308-8426				26
28	35.56	1.400	33.02	1.300	30.48	1.200	015-91-1288								28
30	38.10	1.500	35.56	1.400	33.02	1.300	015-91-1308								30
32	40.64	1.600	38.10	1.500	35.56	1.400	015-91-1328								32
34	43.18	1.700	40.64	1.600	38.10	1.500	015-91-1348								34
36	45.72	1.800	43.18	1.700	40.64	1.600	015-91-1368								36
38	48.26	1.900	45.72	1.800	43.18	1.700	015-91-1388								38
40	50.80	2.000	48.26	1.900	45.72	1.800	015-91-1408								40
42	53.34	2.100	50.80	2.000	48.26	1.900	015-91-1428								42
44	55.88	2.200	53.34	2.100	50.80	2.000	015-91-1448								44
46	58.42	2.300	55.88	2.200	53.34	2.100	015-91-1468								46
48	60.96	2.400	58.42	2.300	55.88	2.200	015-91-1488								48
50	63.50	2.500	60.96	2.400	58.42	2.300	015-91-1508	015-91-6507							50
52	66.04	2.600	63.50	2.500	60.96	2.400	015-91-1528								52
54	68.58	2.700	66.04	2.600	63.50	2.500	015-91-1548								54
56	71.12	2.800	68.58	2.700	66.04	2.600	015-91-1568								56
58	73.66	2.900	71.12	2.800	68.58	2.700	015-91-1588								58
60	76.20	3.000	73.66	2.900	71.12	2.800	015-91-1608								60
62	78.74	3.100	76.20	3.000	73.66	2.900	015-91-1628								62
64	81.28	3.200	78.74	3.100	76.20	3.000	015-91-1648								64
66	83.82	3.300	81.28	3.200	78.74	3.100	015-91-1668								66
68	86.36	3.400	83.82	3.300	81.28	3.200	015-91-1688								68
70	88.90	3.500	86.36	3.400	83.82	3.300	015-91-1708								70
72	91.44	3.600	88.90	3.500	86.36	3.400	015-91-1728								72
74	93.98	3.700	91.44	3.600	88.90	3.500	015-91-1748								74
76	96.52	3.800	93.98	3.700	91.44	3.600	015-91-1768								76
78	99.06	3.900	96.52	3.800	93.98	3.700	015-91-1788								78
80	101.60	4.000	99.06	3.900	96.52	3.800	015-91-1808								80
82	104.14	4.100	101.60	4.000	99.06	3.900	71308-6082								82
84	106.68	4.200	104.14	4.100	101.60	4.000	71308-6084								84
86	109.22	4.300	106.68	4.200	104.14	4.100	71308-6086								86
88	111.76	4.400	109.22	4.300	106.68	4.200	71308-6088								88
90	114.30	4.500	111.76	4.400	109.22	4.300	71308-6090								90
92	116.84	4.600	114.30	4.500	111.76	4.400	71308-6092								92
94	119.38	4.700	116.84	4.600	114.30	4.500	71308-6094								94
96	121.92	4.800	119.38	4.700	116.84	4.600	71308-6096								96
98	124.46	4.900	121.92	4.800	119.38	4.700	71308-6098								98
100	127.00	5.000	124.46	4.900	121.92	4.800	71308-6100								100

SHORT PEG VERSION (.055")

SEE SHEET 1 DEC NO: UCP2014-4901 DRWING IPER 2015/08/12 CHK DRWING IEN 2015/08/12 APPR: SMITH 2015/09/10 DESCRIPTION	QUALITY SYMBOLS 	GENERAL TOLERANCES (UNLESS SPECIFIED)		DIMENSION STYLE		SCALE	DESIGN UNITS	THIRD ANGLE PROJECTION	
				MM/IN			INCH		
				mm	INCH	DRAWN BY	DATE	TITLE	
				4 PLACES ± --- ± ---		KMS	1999/10/15	SALES ASSY INSULATOR DUAL ROW SMT W/BREAK-OFF .025SQ PIN GULLWING .100	
		3 PLACES ± --- ± .005		CHECKED BY	DATE	molex			
		2 PLACES ± 0.13 ± .010		APPROVED BY	DATE	SD-71308-001			
		1 PLACE ± 0.25 ± ---		KMS	1999/10/15	SHEET NO. 5 OF 6			
		0 PLACE ± --- ± ---		MATERIAL NO.		DOCUMENT NO.			
		ANGULAR ±1/2°		SEE TABLE		SD-71308-001			
		DRAFT WHERE APPLICABLE MUST REMAIN WITHIN DIMENSIONS		THIS DRAWING CONTAINS INFORMATION THAT IS PROPRIETARY TO MOLEX INCORPORATED AND SHOULD NOT BE USED WITHOUT WRITTEN PERMISSION					



PEG-OPTION

Table with columns for NO PEG VERSION, LONG PEG VERSION (130'), and SHORT PEG VERSION (.055'). Includes sub-headers for PACKAGING, DIMENSIONS, and CKTS.

Technical drawing area containing: SEE SHEET 1, 59 TIN PLATE ASSEMBLIES, QUALITY SYMBOLS, GENERAL TOLERANCES, DIMENSION STYLE, SCALE, DESIGN UNITS, THIRD ANGLE PROJECTION, and MOLEX logo.