

## **Excellent Integrated System Limited**

Stocking Distributor

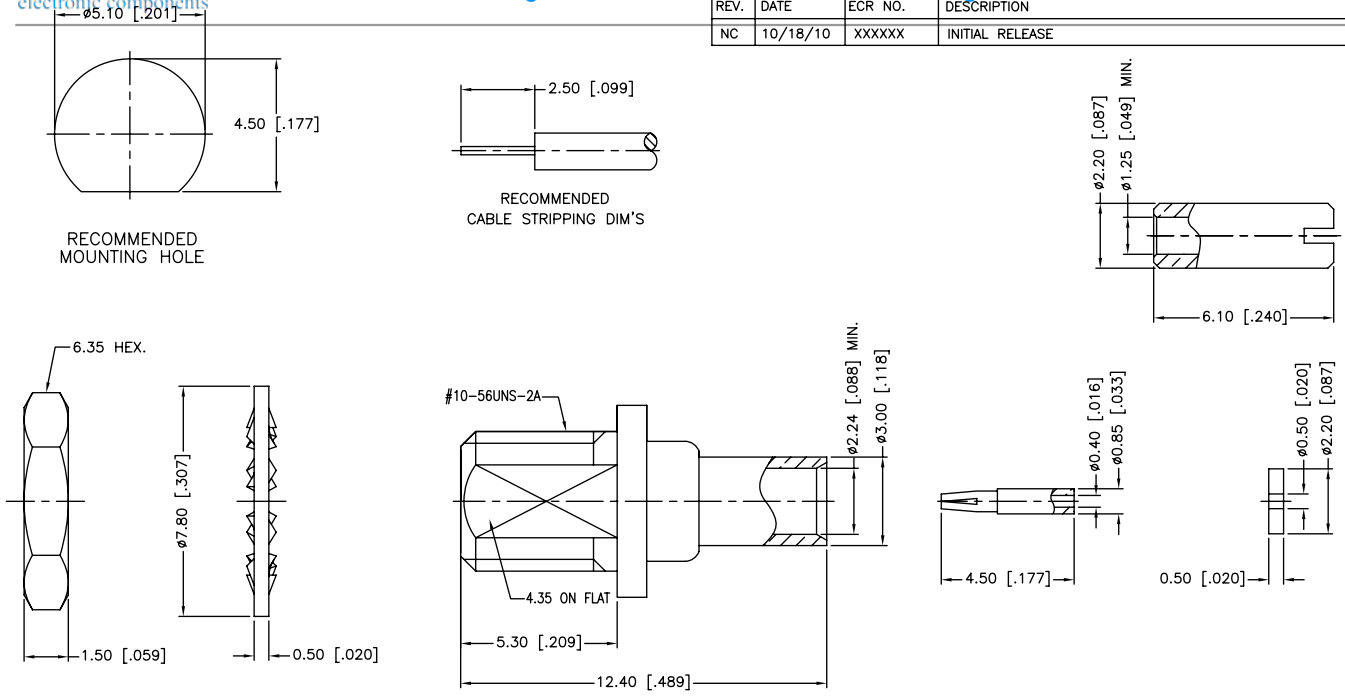
Click to view price, real time Inventory, Delivery & Lifecycle Information:

[Amphenol RF](#)  
[262126](#)

For any questions, you can email us directly:

[sales@integrated-circuit.com](mailto:sales@integrated-circuit.com)

REV.	DATE	ECR NO.	DESCRIPTION
NC	10/18/10	XXXXXX	INITIAL RELEASE



DESCRIPTION	MATERIAL	FINISH	QTY	UNLESS OTHERWISE SPECIFIED DIMENSIONS ARE IN MILLIMETERS. DIMENSIONS IN [ ] ARE IN INCHES AND FOR CUSTOMER REFERENCE ONLY.	APPROVALS	DATE	<p><b>Amphenol Connex</b></p> <p>PART DESCRIPTION</p> <p><b>MMCX BULKHEAD DIRECT SOLDER JACK (FOR .047" SEMI-RIGID CABLE)</b></p> <p>PART NO.</p> <p><b>262126</b></p> <p>DWG. NO. 262126.DWG</p> <p>REV. NC SIZE A SCALE NA</p>	
8	SOLDER BARREL	BRASS	GOLD	1	UNLESS OTHERWISE SPECIFIED TOLERANCES FOR MILLIMETERS ARE: 0.5 - 8mm ± 0.20mm 8 - 30mm ± 0.40mm 30 - 120mm ± 0.50mm  UNLESS OTHERWISE SPECIFIED TOLERANCES FOR INCHES ARE: .020 - .315 = ± 0.007" .315 - 1.180 = ± 0.015" 1.180 - 4.724 = ± 0.020"  DO NOT SCALE DRAWING	10/18/10		
7	INSULATOR	PTFE	NATURAL	1		DRAWN		M.ZHANG
6	HEX NUT	BRASS	GOLD	1		CHECKED		
5	LOCK WASHER	BRASS	GOLD	1		ISSUED		
4	CONTACT PIN	BER. COPPER	GOLD	1	SHEET	1 OF 1		
3	BARREL	BRASS	GOLD	1				
2	INSULATOR	PTFE	NATURAL	1				
1	BODY	BRASS	GOLD	1				
				DO NOT SCALE DRAWING	CAD FILE C:/CONNEX/262126.DWG			