

## Excellent Integrated System Limited

Stocking Distributor

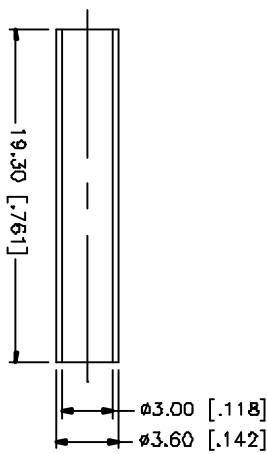
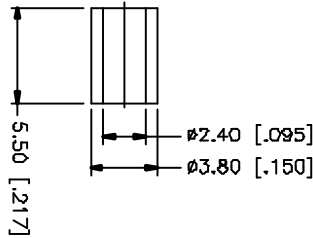
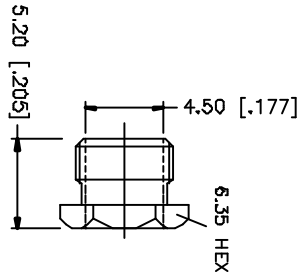
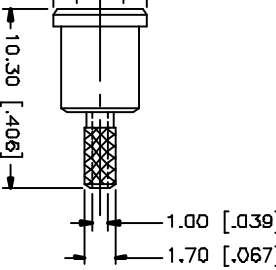
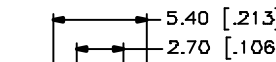
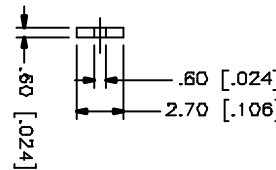
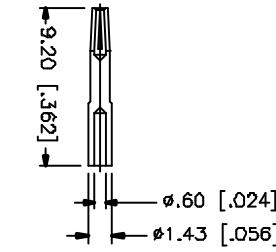
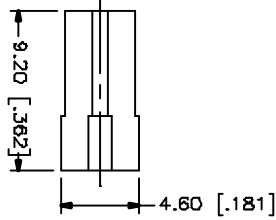
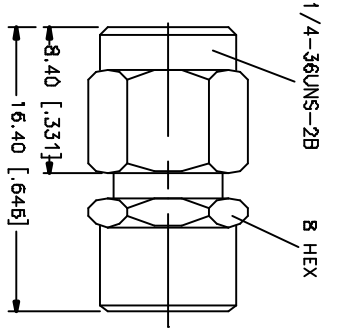
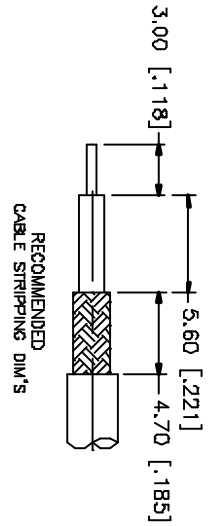
Click to view price, real time Inventory, Delivery & Lifecycle Information:

[Amphenol RF](#)  
[132193RP](#)

For any questions, you can email us directly:

[sales@integrated-circuit.com](mailto:sales@integrated-circuit.com)

REV.	DATE	DESCRIPTION
NC	08/02/04	INITIAL RELEASE



NOTE:  
1. CRIMPED FERULE  
HEX CRIMP SIZE .128"

8	HEAT SHRINK TUBE																			
7	FERULE	COPPER	GOLD	1																
6	HEX NUT	BRASS	GOLD	1																
5	BARREL	BRASS	GOLD	1																
4	CONTACT PIN	BER. COPPER	GOLD	1																
3	INSULATOR BODY	TEFLON BRASS	NATURAL GOLD	1																
2	INSULATOR BODY	TEFLON BRASS	NATURAL GOLD	1																
1	DESCRIPTION	MATERIAL	FINISH	QTY																

APPROVALS	DATE
DRAWN G.R.S.	08/02/04
CHECKED	
ISSUED	
SHEET 1 OF 1	

PART NO.	PART DESCRIPTION
132193RP	SMA REVERSE POLARITY CRIMP PLUG (FOR RG-178B/U, 196A/U)

DWG. NO.	REV.	NC	SIZE	SCALE
132193RP.DWG			A	NA