

Excellent Integrated System Limited

Stocking Distributor

Click to view price, real time Inventory, Delivery & Lifecycle Information:

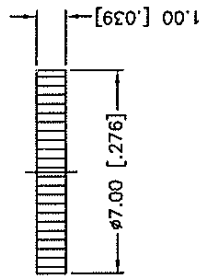
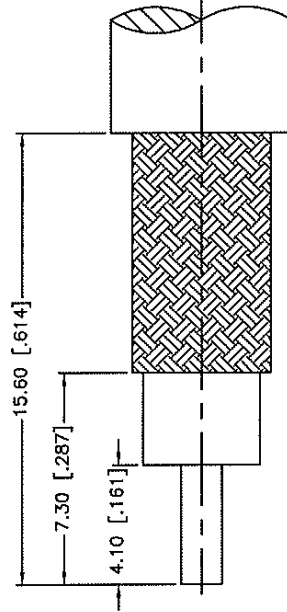
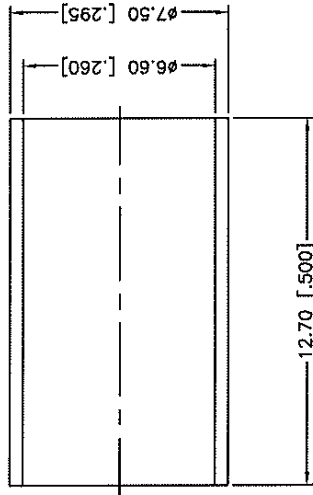
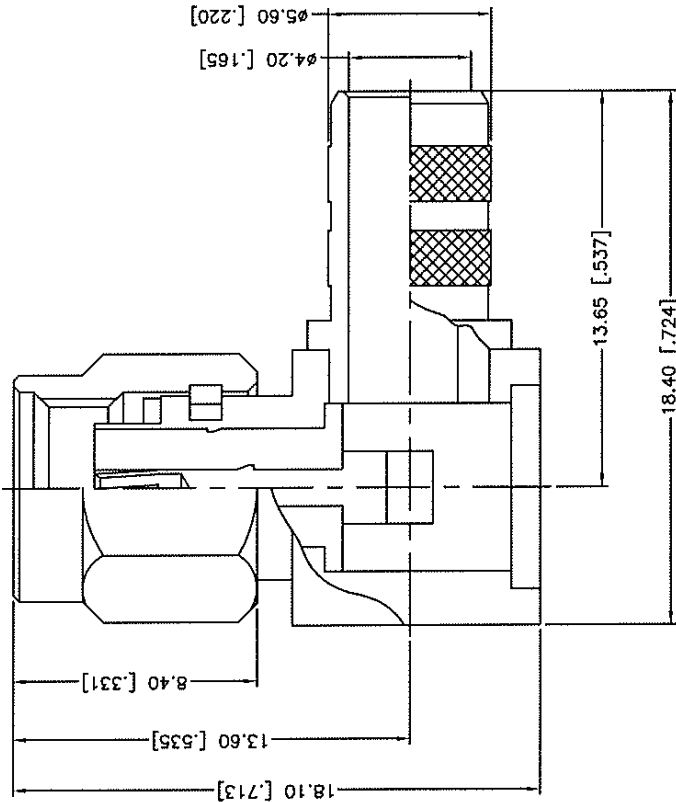
[Amphenol RF](#)
[132239RP](#)

For any questions, you can email us directly:

sales@integrated-circuit.com



REV.	DATE	ECR NO.	DESCRIPTION
NC	03/16/11	XXXXXX	INITIAL RELEASE



1. CRIMPED FERRULE
HEX CRIMP SIZE .255"
2. CONTACT PIN TO SOLDER

RECOMMENDED
CABLE STRIPPING DIM'S

UNLESS OTHERWISE SPECIFIED, DIMENSIONS ARE IN MILLIMETERS UNLESS INDICATED OTHERWISE IN INCHES AND FOR CUSTOMER REFERENCE ONLY.
 UNLESS OTHERWISE SPECIFIED, TOLERANCES FOR MILLIMETERS ARE:
 0.5 - 8mm ± 0.20mm
 8 - 30mm ± 0.40mm
 30 - 120mm ± 0.50mm
 UNLESS OTHERWISE SPECIFIED, TOLERANCES FOR INCHES ARE:
 .020 - .315 ± 0.0007"
 .315 - 1.180 ± 0.015"
 1.180 - 4.724 ± 0.020"

DO NOT SCALE DRAWING

QTY	FINISH	MATERIAL
1	GOLD	BRASS
1	GOLD	BRASS
1	RED	SILICONE
1	NATURAL	BERYLLIUM COPPER
1	GOLD	BERYLLIUM COPPER
1	NATURAL	PTE
1	GOLD	BRASS
1	GOLD	BRASS

APPROVALS	DATE
DRAWN M. ZHANG	03/16/11
CHECKED	
ISSUED	
SHEET 1 OF 1	

Amphenol Connex	
PART DESCRIPTION SMA REVERSE POLARITY R/A CRIMP PLUG (FOR RG-8/X, LMR-240)	
PART NO. 132239RP	
DWG. NO. 132239RP.DWG	REV. NC
SCALE A	SCALE NA

