

Excellent Integrated System Limited

Stocking Distributor

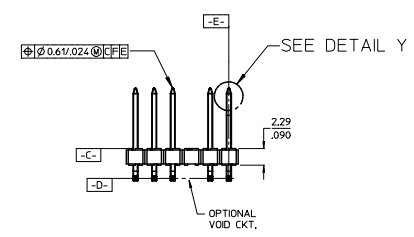
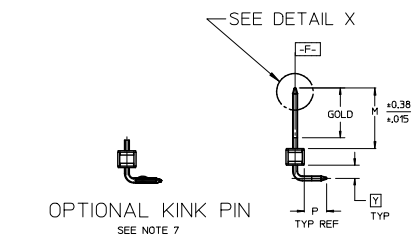
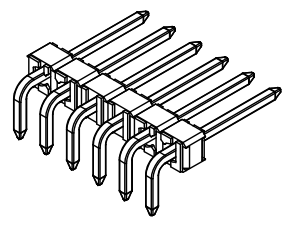
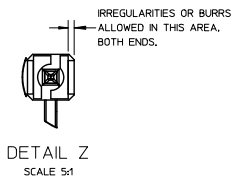
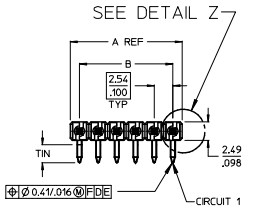
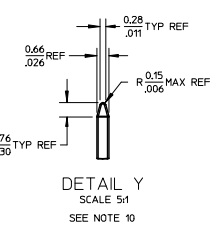
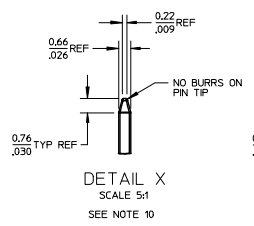
Click to view price, real time Inventory, Delivery & Lifecycle Information:

[Molex Connector Corporation](#)
[0022288131](#)

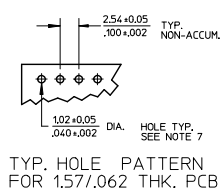
For any questions, you can email us directly:

sales@integrated-circuit.com

| NO. CKTS | DIM. A | DIM. B |
|----------|--------|--------|
| 2 | 5.08 | 2.54 |
| 3 | 7.62 | 5.08 |
| 4 | 10.16 | 7.62 |
| 5 | 12.70 | 10.16 |
| 6 | 15.24 | 12.70 |
| 7 | 17.78 | 15.24 |
| 8 | 20.32 | 17.78 |
| 9 | 22.86 | 20.32 |
| 10 | 25.40 | 22.86 |
| 11 | 27.94 | 25.40 |
| 12 | 30.48 | 27.94 |
| 13 | 33.02 | 30.48 |
| 14 | 35.56 | 33.02 |
| 15 | 38.10 | 35.56 |
| 16 | 40.64 | 38.10 |
| 17 | 43.18 | 40.64 |
| 18 | 45.72 | 43.18 |
| 19 | 48.26 | 45.72 |
| 20 | 50.80 | 48.26 |
| 21 | 53.34 | 50.80 |
| 22 | 55.88 | 53.34 |
| 23 | 58.42 | 55.88 |
| 24 | 60.96 | 58.42 |
| 25 | 63.50 | 60.96 |
| 26 | 66.04 | 63.50 |
| 27 | 68.58 | 66.04 |
| 28 | 71.12 | 68.58 |
| 29 | 73.66 | 71.12 |
| 30 | 76.20 | 73.66 |
| 31 | 78.74 | 76.20 |
| 32 | 81.28 | 78.74 |
| 33 | 83.82 | 81.28 |
| 34 | 86.36 | 83.82 |
| 35 | 88.90 | 86.36 |
| 36 | 91.44 | 88.90 |
| 36 | 3.600 | 3.500 |



- NOTES:
- MATERIAL: GLASS FILLED NYLON
UL94V-0. COLOR: BLACK
 - FINISH:
(154) OVERALL TIN: 0.00254/0.00100 MIN. OVER
NICKEL: 0.00127/0.00050 MIN.
(208) SELECT GOLD: 0.00038/0.00015 MIN.
SELECT TIN: 0.00254/0.00100 MIN.
WITH OVERALL NICKEL UNDERPLATE: 0.00127/0.00050 MIN.
(228) SELECT GOLD: 0.00076/0.00030 MIN.
SELECT TIN: 0.00254/0.00100 MIN.
WITH OVERALL NICKEL UNDERPLATE: 0.00127/0.00050 MIN.
 - PRODUCT SPECIFICATION: PS 10-07
 - PACKAGING INFORMATION: SEE TABLES
 - SOLDERABILITY PER SMES-152.
 - PIN PUSH OUT FORCE: 3 LBS. MIN
 - PIN KINK OPTION NOT RECOMMENDED FOR 2 CIRCUIT PARTS.
HOLE SIZE MAY NEED TO BE ADJUSTED FOR 2 CIRCUIT PARTS
WITH KINK OPTION FOR PROPER INSERTION INTO THE PCB.
SEE SMES-42003 FOR ADDITIONAL INFORMATION
ON KINK PIN DIRECTION AND PLACEMENT.
 - HEADERS ARE NOT STACKABLE ON 2.54/.100 CENTERS.
 - THIS PART CONFORMS TO CLASS B REQUIREMENTS OF
COSMETIC SPECIFICATION PS-4249-002.
 - PIN TIP DIMENSIONS ARE SHOWN FOR REFERENCE ONLY.
DIMENSIONS APPLY PRIOR TO PLATING OR ASSEMBLY.



| CORRECT DIMENSION | | QUALITY SYMBOLS | GENERAL TOLERANCES (UNLESS SPECIFIED) | | DIMENSION STYLE | | SCALE | DESIGN UNITS | THIRD ANGLE PROJECTION | | |
|--|------------|--------------------|---------------------------------------|-----------------------|-----------------|------------------------|-------|---------------------------|---|------------------|--|
| EC NO. | DATE | | mm | INCH | MM/IN | DATE | INCH | DATE | TITLE | SHEET NO. | |
| 1 | 2014/10/20 | ▽=0 | ± .10 | ± .010 | MM/IN | 2:1 | INCH | 11/24/03 | KK 100 HEADER ASSEMBLY FLAT RIGHT ANGLE BREAKAWAY | 1 OF * | |
| 2 | 2014/10/20 | ▽=0 | ± 0.25 | ± .015 | MM/IN | 2:1 | INCH | 11/24/03 | | | |
| 3 | 2014/10/20 | ▽=0 | ± 0.38 | ± .015 | MM/IN | 2:1 | INCH | 11/24/03 | | | |
| 4 | 2014/10/20 | ▽=0 | ± 0.38 | ± .015 | MM/IN | 2:1 | INCH | 11/24/03 | | | |
| DRAWN BY: JSCHAFFER | | CHECKED BY: SAMIEC | | APPROVED BY: MARGULIS | | MATERIAL NO. SEE CHART | | DOCUMENT NO. SD-42377-001 | | SHEET NO. 1 OF * | |
| <p>THIS DRAWING CONTAINS INFORMATION THAT IS PROPRIETARY TO MOLEX INCORPORATED AND SHOULD NOT BE USED WITHOUT WRITTEN PERMISSION</p> | | | | | | | | | | | |